



Veal Supply at a Glance - Canada

For week ending July 15, 2017

Quebec Live Auction											
	2017				2016				Volume (YTD)		
	Number (head)	Price (\$ / 100 lbs)			Number (head)	Price (\$ / 100 lbs)			head		
Dairy Calves	Average	Min	Max	Average	Min	Max	2017	2016	% chg		
Male											
Good 90 - 120 lbs	722	274.00	230.00	295.00	730	245.00	210.00	280.00	20 235	23 253	-13.0 %
Good 121 - 140 lbs	172	264.00	220.00	290.00	139	238.00	200.00	275.00	4 928	4 740	4.0 %
Average 90 - 140 lbs	679	230.00	175.00	275.00	806	206.00	150.00	255.00	15 926	17 551	-9.3 %
Misc. - All weights	534	119.00	35.00	230.00	626	90.00	20.00	185.00	9 298	11 172	-16.8 %
Female											
Good 90 - 120 lbs	85	330.00	270.00	370.00	130	248.00	195.00	295.00	1 857	2 939	-36.8 %
A2 Grain fed veal calves (hide off)	1 094	246.40	n/a	n/a	1 440	250.00	n/a	n/a	40 329	39 551	2.0 %
596 lbs live / 325-353 lbs hide off											

Source: Les producteurs de bovins du Québec

Ontario Live Auction											
	2017				2016				Volume (YTD)		
	Number (head)	Price (\$ / 100 lbs)			Number (head)	Price (\$ / 100 lbs)			head		
	Average	Min	Max	Average	Min	Max	2017	2016	% chg		
+ 600 lbs	787	122.18	109.83	137.33	566	112.30	102.14	129.40	17 572	15 596	12.7 %
451 - 600 lbs	44	115.59	96.07	127.36	19	110.07	100.26	122.89	1 065	725	46.9 %
301 - 450 lbs	20	128.42	107.45	156.67	23	166.90	105.69	207.04	930	595	56.3 %
126 - 300 lbs	105	191.12	139.55	261.62	131	209.02	155.76	288.26	3 087	3 407	-9.4 %
- 125 lbs	934	225.75	151.77	299.31	893	211.93	140.24	265.67	21 860	23 941	-8.7 %

Source: Beef Farmers of Ontario

Federally Inspected Slaughter									
	Weekly			Year to date			Carcass Weight lbs (Jan-May)		
	2017	2016	% chg	2017	2016	% chg	2017	2016	% chg
Ontario	246	279	-11.8 %	7 511	8 384	-10.4 %	383	374	2.2 %
Quebec	3 790	3 972	-4.6 %	100 520	101 710	-1.2 %	322	320	1 %
Canada	4 036	4 251	-5.1 %	108 031	110 094	-1.9 %	326	323	0.9 %

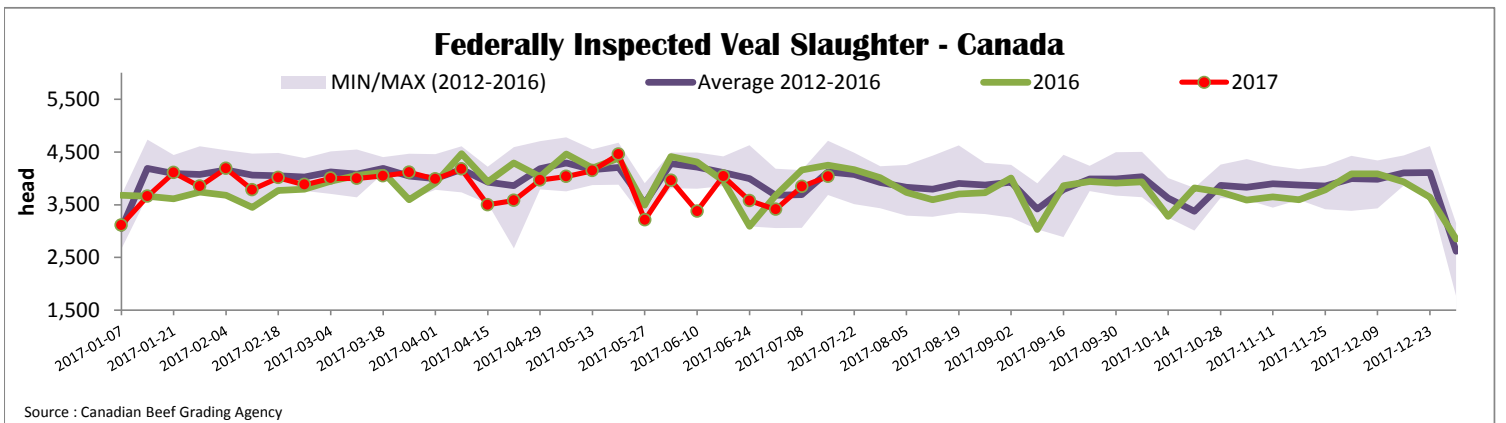
Source: Canadian Beef Grading Agency

Source: CFIA

Exports				Imports			
Total veal (tonnes)	Jan. 1 - May 30, 2017			Total veal (tonnes)	Jan. 1 - July 15, 2017		
	2017	2016	% chg		2017	2016	% chg
United States	1 580	977	61.6 %	United States	1009	718	40.5 %
United Arab Emirates	79	103	-23.6 %	Australia	99	240	-58.5 %
Saudi Arabia	22	6	-	Netherlands	30	2	-
Hong Kong	0.6	0	-	New Zealand	19	35	-44.0 %
Others	0.6	1	-56.4 %	Italy	7	0	-
Total	1 682	1 088	54.6 %	Others	0	12	-
				Total	1 164	1006	15.7 %

Source: Statistics Canada

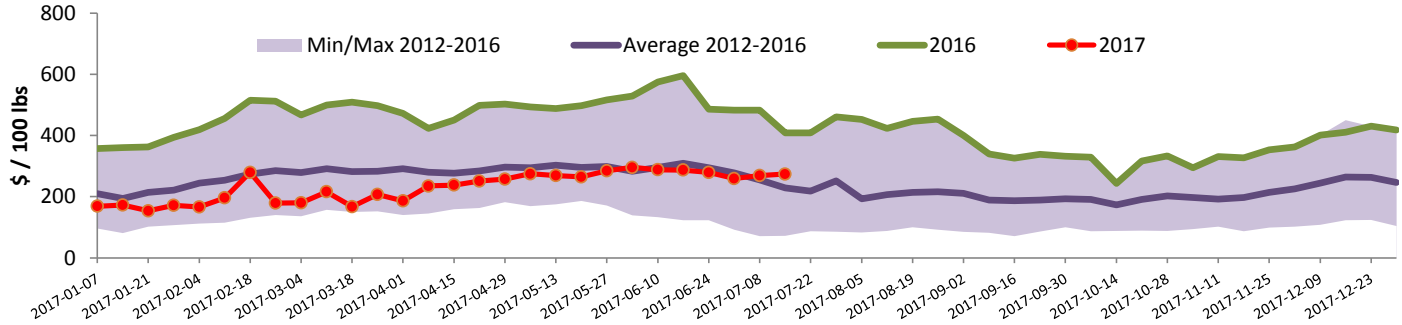
Source: CFIA



Source: Canadian Beef Grading Agency

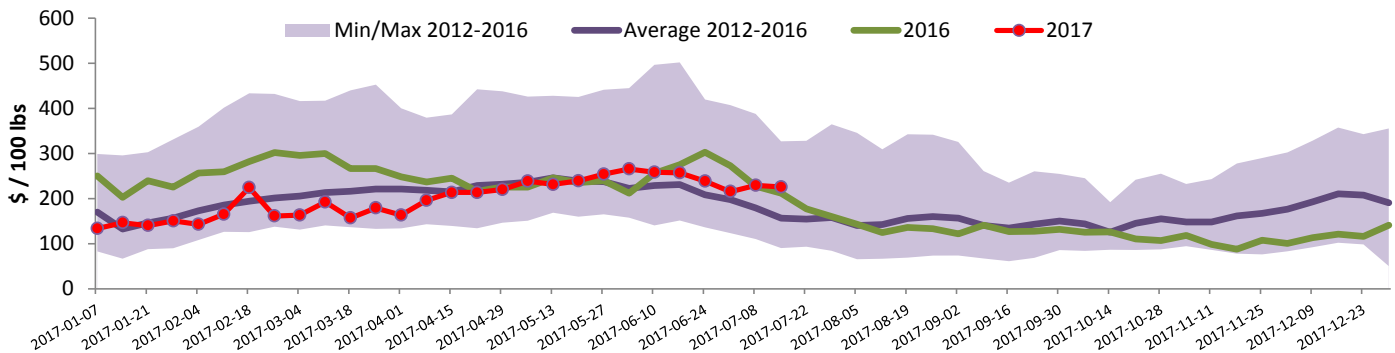


Quebec Veal Prices - Male: Good 90-120 lbs



Source : Fédération des producteurs de bovins du Québec

Ontario Veal Prices - 125 lbs and less



Source : Beef Farmers of Ontario

United States

Week ending July 8, 2017

Federally Inspected Slaughter

	Weekly			Year to date		
	2017	2016	% chg	2017	2016	% chg
Milk-fed or nature *						
North East	1 894	1 738	9.0 %	57 900	62 275	-7.0 %
North Central	1 272	1 428	-10.9 %	47 877	55 376	-13.5 %
Total	3 166	3 166	0.0 %	105 777	117 651	-10.1 %
Other calves	5 089	4 565	11.5 %	148 727	109 782	35.5 %
Total	8 255	7 731	6.8 %	254 504	227 433	11.9 %
Production						
Calves (million lbs)	1.2	1.1	9.1 %	37.1	38.1	-2.6 %
Live weight (lbs)	244	250	-2.4 %			
Dressed weight (lbs)	143	147	-2.7 %			

Source : USDA

Northeast and North Central U.S. Wholesale Price

\$/100 lbs	Simple avg	Min	Max
307 Rack, Ribeye, Boneless	1 695.00	1 695.00	1 695.00
332 Loin, Trimmed 4x4	620.00	590.00	650.00
1336 Leg slice, Retail	895.00	795.00	995.00
1312 Osso Buco, Fore Shank	830.00	610.00	1 050.00
Shoulder Clod, Chuck	690.00	525.00	855.00

Source : USDA

Pennsylvania Vintage Calf Auction

		July 4, 2017		
		\$/ 100 lbs	Min	Max
Number 1	95-121 lbs		165.00	172.00
Number 2	85-112 lbs		157.00	172.00
Number 3	106 lbs		140.00	140.00
	83-95 lbs		150.00	167.00
	65 lbs		82.00	82.00

Source : USDA

Northeast and North Central

(Veal Carcass, Hot Basis – Paid to Producer (Hide off, 255-315 lbs))

* Special fed : milk fed, nature

\$/US / 100 lbs	Weighted Average Price	Min	Max
Non-Packer Owned	306.51	285.00	320.00
Packer Owned	304.82	300.00	307.00

Source : USDA