



## Veal Supply at a Glance - Canada

For week ending July 22, 2017

Quebec Live Auction											
	2017				2016				Volume (YTD)		
	Number	Price ( \$ / 100 lbs)			Number	Price ( \$ / 100 lbs)			head		
Dairy Calves	(head)	Average	Min	Max	(head)	Average	Min	Max	2017	2016	% chg
Male											
Good 90 - 120 lbs	611	254.00	220.00	280.00	519	228.00	175.00	260.00	20 846	23 772	-12.3 %
Good 121 - 140 lbs	103	248.00	218.00	275.00	101	227.00	170.00	265.00	5 031	4 841	3.9 %
Average 90 - 140 lbs	743	218.00	160.00	255.00	507	183.00	120.00	240.00	16 669	18 058	-7.7 %
Misc. - All weights	542	109.00	25.00	185.00	320	68.00	20.00	125.00	9 840	11 492	-14.4 %
Female											
Good 90 - 120 lbs	90	300.00	220.00	340.00	74	278.00	210.00	340.00	1 947	3 013	-35.4 %
A2 Grain fed veal calves (hide off)	1 276	245.20	n/a	n/a	1 366	250.00	n/a	n/a	41 605	40 917	1.7 %
596 lbs live / 325-353 lbs hide off											

Source: Les producteurs de bovins du Québec

Ontario Live Auction											
	2017				2016				Volume (YTD)		
	Number	Price ( \$ / 100 lbs)			Number	Price ( \$ / 100 lbs)			head		
	(head)	Average	Min	Max	(head)	Average	Min	Max	2017	2016	% chg
+ 600 lbs	672	118.68	104.04	132.84	566	112.90	101.37	127.39	18 244	16 162	12.9 %
451 - 600 lbs	23	118.14	99.74	133.96	18	106.73	103.36	110.25	1 088	743	46.4 %
301 - 450 lbs	18	120.27	96.72	142.56	20	174.76	143.97	195.32	948	615	54.1 %
126 - 300 lbs	73	188.88	100.94	268.94	112	180.30	138.26	226.33	3 160	3 519	-10.2 %
- 125 lbs	919	206.15	129.97	279.24	1 021	177.17	110.00	229.22	22 779	24 962	-8.7 %

Source: Beef Farmers of Ontario

Federally Inspected Slaughter									
	Weekly			Year to date			Carcass Weight lbs (Jan-May)		
	2017	2016	% chg	2017	2016	% chg	2017	2016	% chg
Ontario	238	279	-14.7 %	7 749	8 663	-10.6 %	383	374	2.2 %
Quebec	3 524	3 884	-9.3 %	104 044	105 594	-1.5 %	322	320	1 %
<b>Canada</b>	<b>3 762</b>	<b>4 163</b>	<b>-9.6 %</b>	<b>111 793</b>	<b>114 257</b>	<b>-2.2 %</b>	<b>326</b>	<b>323</b>	<b>0.9 %</b>

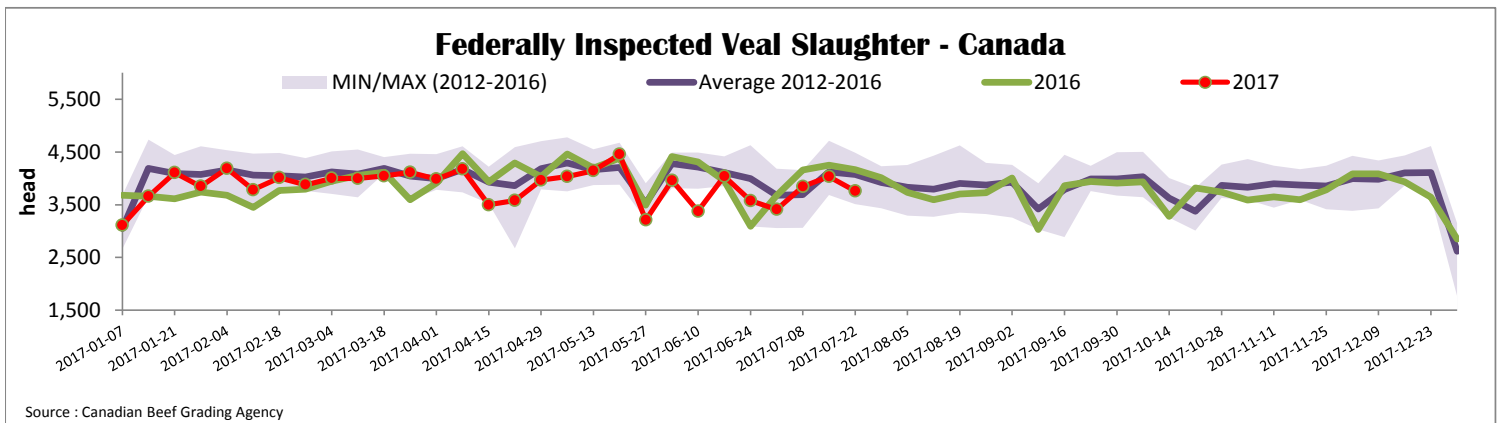
Source: Canadian Beef Grading Agency

Source: CFIA

Exports				Imports			
Total veal (tonnes)	Jan. 1 - May 30, 2017			Total veal (tonnes)	Jan. 1 - July 22, 2017		
	2017	2016	% chg		2017	2016	% chg
United States	1 580	977	61.6 %	United States	1020	758	34.5 %
United Arab Emirates	79	103	-23.6 %	Australia	99	274	-63.8 %
Saudi Arabia	22	6	-	Netherlands	32	2	-
Hong Kong	0.6	0	-	New Zealand	19	35	-44.0 %
Others	0.6	1	-56.4 %	Italy	7	0	-
<b>Total</b>	<b>1 682</b>	<b>1 088</b>	<b>54.6 %</b>	Others	0	12	-
				<b>Total</b>	<b>1 177</b>	<b>1081</b>	<b>8.9 %</b>

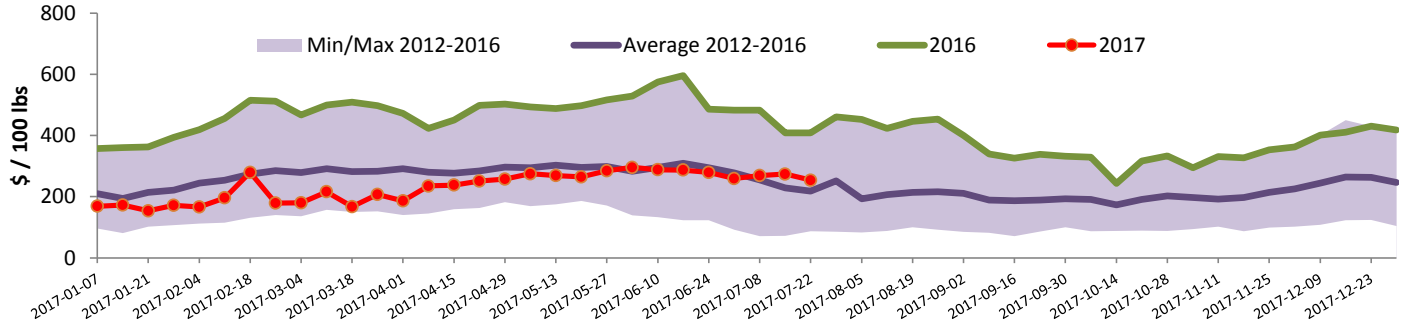
Source: Statistics Canada

Source: CFIA



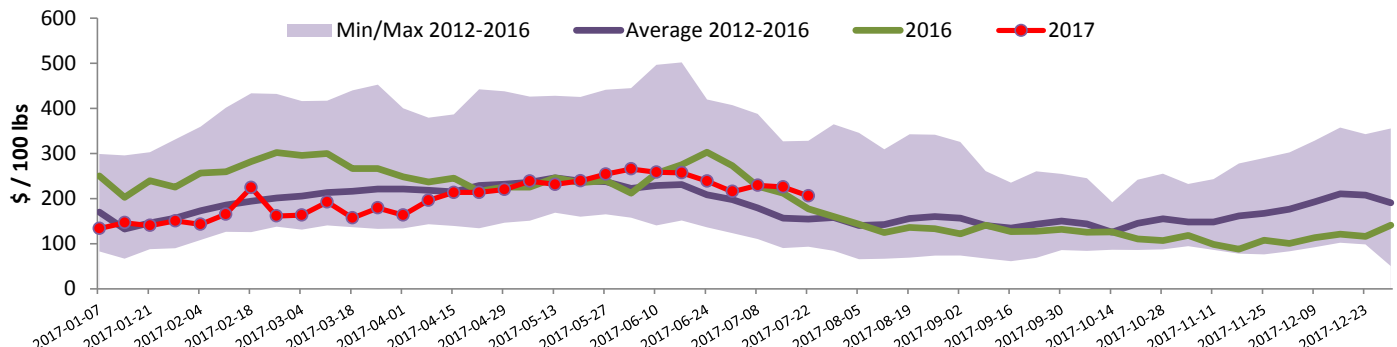


### Quebec Veal Prices - Male: Good 90-120 lbs



Source : Fédération des producteurs de bovins du Québec

### Ontario Veal Prices - 125 lbs and less



Source : Beef Farmers of Ontario

## United States

Week ending July 15, 2017

### Federally Inspected Slaughter

	Weekly			Year to date		
	2017	2016	% chg	2017	2016	% chg
Milk-fed or nature *						
North East	2 068	2 090	-1.1 %	59 968	64 365	-6.8 %
North Central	1 682	1 996	-15.7 %	49 559	57 372	-13.6 %
<b>Total</b>	<b>3 750</b>	<b>4 086</b>	<b>-8.2 %</b>	<b>109 527</b>	<b>121 737</b>	<b>-10.0 %</b>
Other calves	5 713	5 018	13.9 %	154 440	114 800	34.5 %
<b>Total</b>	<b>9 463</b>	<b>9 104</b>	<b>3.9 %</b>	<b>263 967</b>	<b>236 537</b>	<b>11.6 %</b>
Production						
Calves (million lbs)	1.4	1.4	0.0 %	38.5	38.1	1.0 %
Live weight (lbs)	245	258	-5.0 %			
Dressed weight (lbs)	144	151	-4.6 %			

Source : USDA

### Northeast and North Central U.S. Wholesale Price

\$/100 lbs	Simple avg	Min	Max
307 Rack, Ribeye, Boneless	1 695.00	1 695.00	1 695.00
332 Loin, Trimmed 4x4	620.00	590.00	650.00
1336 Leg slice, Retail	895.00	795.00	995.00
1312 Osso Buco, Fore Shank	830.00	610.00	1 050.00
Shoulder Clod, Chuck	690.00	525.00	855.00

Source : USDA

### Pennsylvania Vintage Calf Auction

		July 11, 2017		
		\$/ 100 lbs	Min	Max
Number 1	113-121 lbs		127.00	130.00
	85-104 lbs		140.00	162.00
Number 2	110-113 lbs		130.00	142.00
	85-103 lbs		150.00	160.00
Number 3	108-109 lbs		146.00	150.00
	83-95 lbs		118.00	142.00
	73 lbs		115.00	115.00

Source : USDA

### Northeast and North Central

(Veal Carcass, Hot Basis – Paid to Producer (Hide off, 255-315 lbs))

\* Special fed : milk fed, nature

\$/US / 100 lbs	Weighted Average Price	Min	Max
Non-Packer Owned	307.47	285.00	318.79
Packer Owned	305.75	300.00	307.00

Source : USDA