



## Veal Supply at a Glance - Canada

For week ending June 18, 2016

Quebec Live Auction											
	2016				2015				Volume (YTD)		
	Number	Price ( \$ / 100 lbs)			Number	Price ( \$ / 100 lbs)			head		
Dairy Calves	(head)	Average	Min	Max	(head)	Average	Min	Max	2016	2015	% chg
Male											
Good 90 -120 lbs	884	308.00	285.00	325.00	1159	596.00	530.00	635.00	20 029	23 817	-15.9 %
Good 121 - 140 lbs	200	299.00	265.00	330.00	186	573.00	520.00	630.00	4 072	4 755	-14.4 %
Average 90 - 140 lbs	599	281.00	235.00	315.00	479	488.00	330.00	590.00	14 671	11 130	31.8 %
Misc. - All weights	294	182.00	50.00	285.00	274	211.00	20.00	470.00	9 428	6 795	38.7 %
Female											
Good 90 -120 lbs	106	292.00	270.00	330.00	159	559.00	480.00	630.00	2 436	3 071	-20.7 %
A2 Grain fed veal calves (hide off)	1 586	255.00	n/a	n/a	1 201	314.70	n/a	n/a	33 467	32 985	1.5 %
596 lbs live - (325-353 lbs hide off)											

Source: Fédération des producteurs de bovins du Québec

Ontario Live Auction											
	2016				2015				Volume (YTD)		
	Number	Price ( \$ / 100 lbs)			Number	Price ( \$ / 100 lbs)			head		
	(head)	Average	Min	Max	(head)	Average	Min	Max	2016	2015	% chg
+ 600 lbs	597	119.98	108.27	131.17	735	151.26	136.73	171.33	13 250	13 675	-3.1 %
451 - 600 lbs	26	117.93	101.46	130.54	26	159.65	131.02	186.44	630	779	-19.1 %
301 - 450 lbs	10	158.82	133.00	180.35	21	217.83	193.52	244.93	509	690	-26.2 %
126 - 300 lbs	117	227.62	182.40	288.93	153	412.63	305.52	550.89	2 936	3 025	-2.9 %
- 125 lbs	820	275.58	230.22	320.13	996	502.16	369.62	607.39	20 583	22 286	-7.6 %

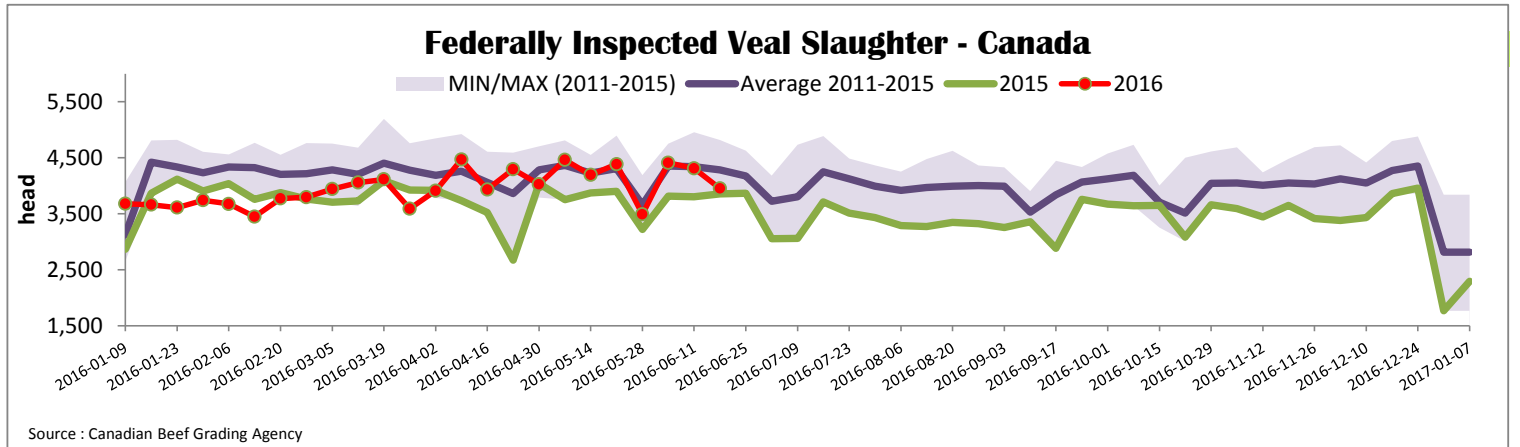
Source: Beef Farmers of Ontario

Federally Inspected Slaughter									
	Weekly			Year to date			Carcass Weight (lbs - Jan-April)		
	2016	2015	% chg	2016	2015	% chg	2016	2015	% chg
Ontario	357	297	20.2 %	7 250	7 291	-0.6 %	382	356	7.3 %
Quebec / Atlantic	3 596	3 556	1.1 %	87 676	82 458	6.3 %	325	339	-4.1 %
<b>Canada</b>	<b>3 953</b>	<b>3 853</b>	<b>2.6 %</b>	<b>94 926</b>	<b>89 749</b>	<b>5.8 %</b>	<b>330</b>	<b>341</b>	<b>-3.2 %</b>

Source: Canadian Beef Grading Agency      Source: CFIA

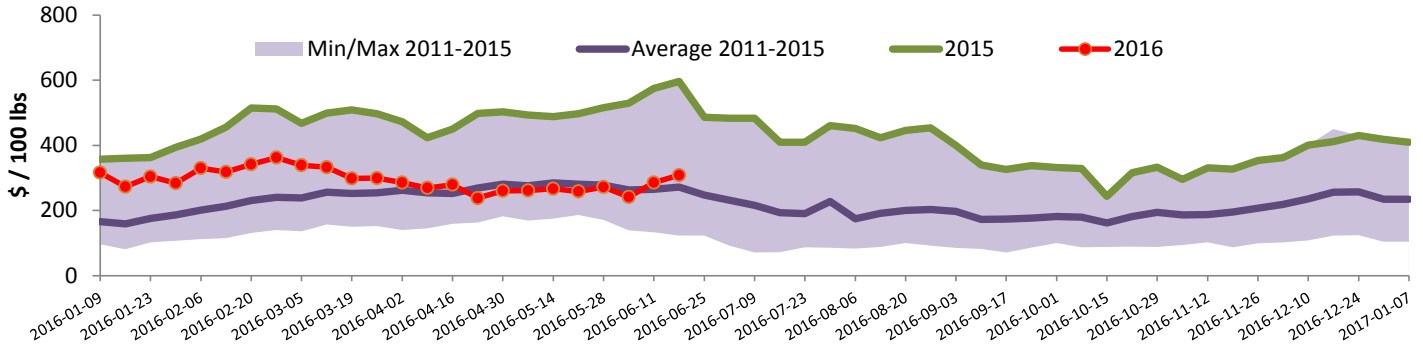
Exports				Imports						
	Jan. 1 - April 30, 2016	2016		2015		Jan. 1 - June 18, 2016	2016		2015	
		(tonnes)	% chg	(tonnes)	% chg		(tonnes)	% chg	(tonnes)	% chg
Total veal		772	-7.5 %	834		824	-16.4 %	986		
United States		684	-11.0 %	768		643	-	231		-
United Arab Emirates		87	35.1 %	64		134	-82.0 %	742		
Cuba		1	-	0		35	-	13		-
Others		0	-	2		13	-	0		-
<b>Total</b>		<b>772</b>	<b>-7.5 %</b>	<b>834</b>		<b>824</b>	<b>-16.4 %</b>	<b>986</b>		
Live calves (head)	Jan. 1 - April 30	247	-	509						

Source: Statistics Canada      Source: CFIA



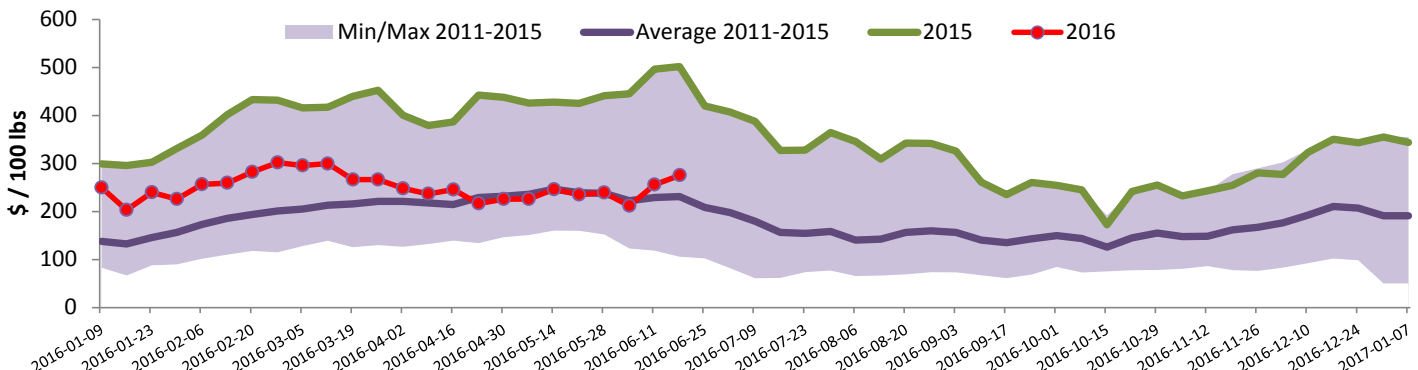


### Quebec Veal Prices - Male: Good 90-120 lbs



Source : Fédération des producteurs de bovins du Québec

### Ontario Veal Prices - 125 lbs and less



Source : Beef Farmers of Ontario

## United States

Week ending June 11, 2016

Federally Inspected Slaughter				Northeast and North Central U.S. Wholesale Price						
	Weekly			Year to date			\$/100 lbs	Simple avg	Min	Max
	2016	2015	% chg	2016	2015	% chg				
Milk-fed or nature *							307 Rack, Ribeye, Boneless	1 825.00	1 825.00	1 825.00
North East	2 129	2 801	-24.0 %	56 524	64 595	-12.5 %	332 Loin, Trimmed 4x4	635.00	600.00	670.00
North Central	2 265	2 256	0.4 %	49 891	54 007	-7.6 %	1336 Leg slice, Retail	1 045.00	815.00	1 275.00
<b>Total</b>	<b>4 394</b>	<b>5 057</b>	<b>-13.1 %</b>	<b>106 415</b>	<b>118 602</b>	<b>-10.3 %</b>	1312 Osso Buco, Fore Shank	747.50	600.00	895.00
Other calves	4 206	2 946	42.8 %	87 487	78 204	11.9 %	Shoulder Clod, Chuck	700.00	545.00	855.00
<b>Total</b>	<b>8 600</b>	<b>8 003</b>	<b>7.5 %</b>	<b>193 902</b>	<b>196 806</b>	<b>-1.5 %</b>				
Production										
Calves (million lbs)	1.5	1.6	-6.3 %	32.5	35.7	-9.0 %				
Live weight (lbs)	297	344	-13.7 %							
Dressed weight (lbs)	176	205	-14.1 %							
										Source : USDA
<b>Northeast and North Central</b>							<b>Pennsylvania Vintage Calf Auction</b>			
(Veal Carcass, Hot Basis – Paid to Producer (Hide off, 255-315 lbs))							Graded Holstein Bull Calves			
* Special fed : milk fed, nature							June 7, 2016			
\$US / 100 lbs								\$ / 100 lbs	Min	Max
Weighted Average Price										
Non-Packer Owned										
Packer Owned										
							Number 1	112 - 120 lbs	190.00	205.00
								95 - 102 lbs	220.00	235.00
							Number 2	83 - 115 lbs	185.00	205.00
							Number 3	73 - 111 lbs	177.00	192.00