



## Veal Supply at a Glance - Canada

For week ending October 24, 2015

Quebec Live Auction											
Dairy Calves	Number (head)	2015 Price ( \$ / 100 lbs)			Number (head)	2014 Price ( \$ / 100 lbs)			Volume (YTD) head		
		Average	Min	Max		Average	Min	Max	2015	2014	% chg
Male											
Good 90 -120 lbs	985	333.00	295.00	375.00	1002	289.00	250.00	320.00	41 893	39 815	5.2 %
Good 121 - 140 lbs	127	316.00	260.00	365.00	189	275.00	225.00	320.00	7 766	7 952	-2.3 %
Average 90 - 140 lbs	596	238.00	150.00	325.00	543	230.00	170.00	275.00	22 554	20 110	12.2 %
Misc. - All weights	505	65.00	10.00	150.00	583	65.00	10.00	165.00	16 788	16 818	-0.2 %
Female											
Good 90 -120 lbs	120	311.00	200.00	390.00	128	286.00	210.00	380.00	5 190	5 059	2.6 %
A2 Grain fed veal calves (hide off)	1 430	333.00	n/a	n/a	1 175	333.60	n/a	n/a	55 921	54 306	3.0 %
596 lbs live - (325-353 lbs hide off)											

Source: Fédération des producteurs de bovins du Québec

Ontario Live Auction											
	Number (head)	2015 Price ( \$ / 100 lbs)			Number (head)	2014 Price ( \$ / 100 lbs)			Volume (YTD) head		
		Average	Min	Max		Average	Min	Max	2015	2014	% chg
+ 600 lbs	607	157.09	136.84	177.68	504	166.36	150.72	182.24	24 476	24 723	-1.0 %
451 - 600 lbs	50	142.98	119.02	165.97	41	144.60	127.83	167.07	1 343	1 632	-17.7 %
301 - 450 lbs	40	234.65	158.32	293.64	54	233.82	142.78	291.71	1 098	1 319	-16.8 %
126 - 300 lbs	145	237.78	157.32	318.12	174	204.06	139.77	270.86	5 471	5 298	3.3 %
- 125 lbs	930	241.99	140.87	318.19	931	234.34	145.50	296.40	42 263	39 787	6.2 %

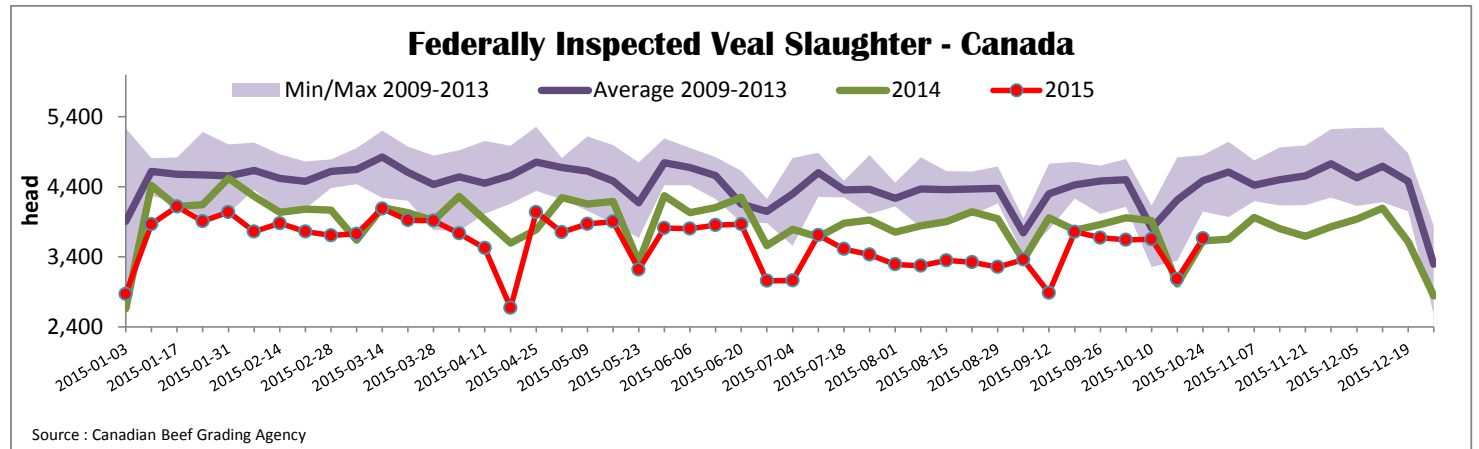
Source: Beef Farmers of Ontario

Federally Inspected Slaughter									
	Weekly			Year to date			Carcass Weight (lbs - Jan-Aug.)		
	2015	2014	% chg	2015	2014	% chg	2015	2014	% chg
Ontario	234	175	33.7 %	12 467	20 670	-39.7 %	363	368	-1.5 %
Quebec / Atlantic	3 428	3 453	-0.7 %	139 505	147 279	-5.3 %	327	300	8.9 %
<b>Canada</b>	<b>3 662</b>	<b>3 628</b>	<b>0.9 %</b>	<b>151 972</b>	<b>167 949</b>	<b>-9.5 %</b>	<b>330</b>	<b>310</b>	<b>6.6 %</b>

Source : Canadian Beef Grading Agency      Source: CFIA

Exports					Imports					
Total veal (tonnes)	Jan. 1 - Aug. 31, 2015	2015			2014			Jan. 1 - Oct. 24, 2015		
		2015	2014	% chg	2015	2014	% chg	2015	2014	% chg
United States		1 396	1 183	18.0 %	Australia		1 119	758	47.5 %	
United Arab Emirates		106	65	64.1 %	United States		768	1 033	-25.6 %	
Others		2	80	-	New Zealand		686	1 514	-54.7 %	
<b>Total</b>		<b>1 504</b>	<b>1 328</b>	<b>13.3 %</b>	<b>Total</b>		<b>2 573</b>	<b>3 305</b>	<b>-22.2 %</b>	

Source: Statistics Canada      Source: CFIA\*



\*Due to data accuracy concerns, please note that data source used has been revised.

Prepared by : Redmeat Section, Agriculture and Agri-Food Canada

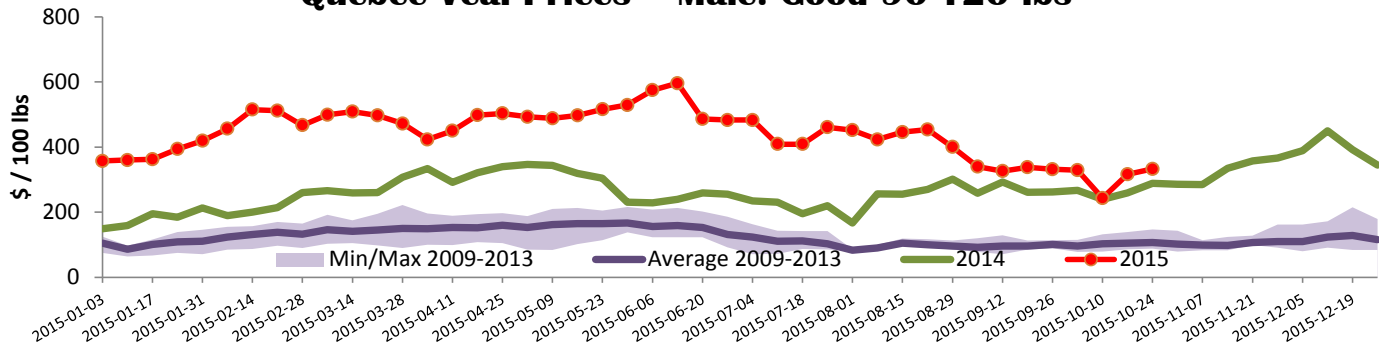
Website : <http://www.agr.gc.ca/eng/?id=1415860000001>

Contact : Julie Dawson

613 773 0149 or Julie.Dawson@agr.gc.ca

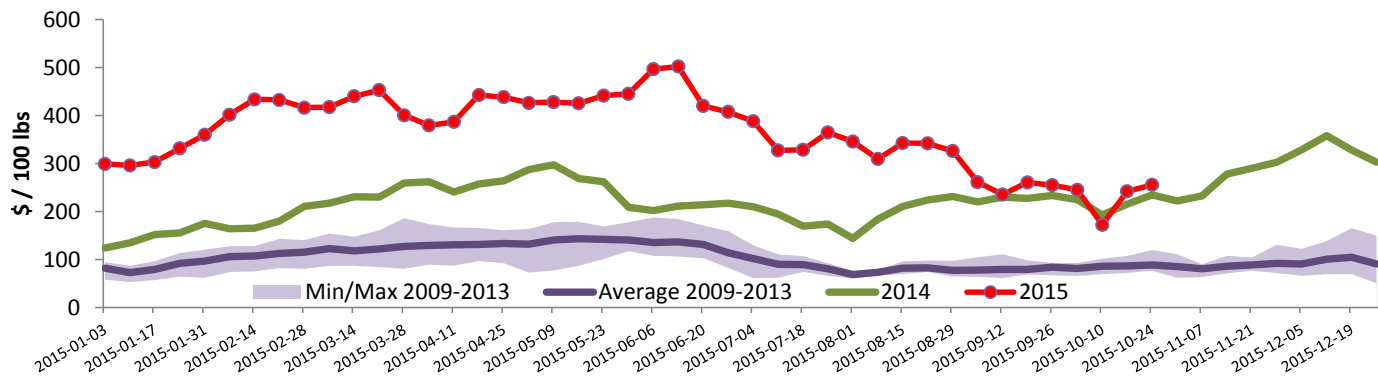


### Quebec Veal Prices - Male: Good 90-120 lbs



Source : Fédération des producteurs de bovins du Québec

### Ontario Veal Prices - 125 lbs and less



Source : Beef Farmers of Ontario

## United States

Week ending October 24, 2015

### Federally Inspected Slaughter

	Weekly			Year to date		
	2015	2014	% chg	2015	2014	% chg
Milk-fed or nature *						
North East	2 909	2 808	3.6 %	114 667	127 333	-9.9 %
North Central	2 341	2 482	-5.7 %	96 587	113 012	-14.5 %
<b>Total</b>	<b>5 250</b>	<b>5 290</b>	<b>-0.8 %</b>	<b>211 254</b>	<b>240 345</b>	<b>-12.1 %</b>
Other calves	3 546	3 961	-10.5 %	139 827	226 857	-38.4 %
<b>Total</b>	<b>8 796</b>	<b>9 251</b>	<b>-4.9 %</b>	<b>351 081</b>	<b>467 202</b>	<b>-24.9 %</b>
Production						
Calves (million lbs)	1.6	1.7	-5.9 %	64.7	76.5	-15.4 %
Live weight (lbs)	310	304	2.0 %			
Dressed weight (lbs)	184	180	2.2 %			

Source : USDA

### Northeast and North Central U.S. Wholesale Price

	\$/100 lbs	Simple avg	Min	Max
307 Rack, Ribeye, Boneless		2 695.00	2 695.00	2 695.00
332 Loin, Trimmed 4x4		737.50	695.00	780.00
1336 Leg slice, Retail		1 122.50	895.00	1 350.00
1312 Osso Buco, Fore Shank		1 042.50	800.00	1 285.00
Shoulder Clod, Chuck		734.00	613.00	855.00

Source : USDA

### Pennsylvania Vintage Calf Auction

Graded Holstein Bull Calves		October 20, 2015	
	\$/ 100 lbs	Min	Max
Number 1	121 lbs	310.00	310.00
	113 lbs	345.00	345.00
	90 - 103 lbs	360.00	385.00
Number 2	117 lbs	300.00	300.00
	102 - 113 lbs	335.00	355.00
Number 3	84 - 95 lbs	375.00	395.00
	109 lbs	300.00	300.00
	84 - 95 lbs	332.00	337.00
	74 - 83 lbs	342.00	350.00

### Northeast and North Central

(Veal Carcass, Hot Basis – Paid to Producer (Hide off, 255-315 lbs))

\* Special fed : milk fed, nature

\$/US / 100 lbs	Weighted Average Price	Min	Max
Non-Packer Owned	442.80	435.00	465.00
Packer Owned	461.84	460.00	465.00