



## Veal Supply at a Glance - Canada

For week ending March 12, 2016

Quebec Live Auction												
Dairy Calves	Number (head)	2016 Price (\$ / 100 lbs)			Number (head)	2015 Price (\$ / 100 lbs)			Volume (YTD) head			
		Average	Min	Max		Average	Min	Max	2016	2015	% chg	
Male												
Good 90 - 120 lbs	921	333.00	310.00	360.00	997	499.00	460.00	565.00	8 890	10 138	-12.3 %	
Good 121 - 140 lbs	188	322.00	290.00	350.00	184	475.00	415.00	525.00	1 766	2 011	-12.2 %	
Average 90 - 140 lbs	707	279.00	200.00	330.00	433	405.00	300.00	500.00	6 024	4 453	35.3 %	
Misc. - All weights	359	124.00	20.00	255.00	258	178.00	25.00	390.00	4 487	3 128	43.4 %	
Female												
Good 90 - 120 lbs	107	312.00	275.00	370.00	132	463.00	400.00	565.00	1 003	1 181	-15.1 %	
A2 Grain fed veal calves (hide off)	1 503	310.00	n/a	n/a	1 618	310.00	n/a	n/a	13 444	13 669	-1.6 %	
596 lbs live - (325-353 lbs hide off)												

Source: Fédération des producteurs de bovins du Québec

Ontario Live Auction												
	Number (head)	2016 Price (\$ / 100 lbs)			Number (head)	2015 Price (\$ / 100 lbs)			Volume (YTD) head			
		Average	Min	Max		Average	Min	Max	2016	2015	% chg	
+ 600 lbs	623	145.85	128.73	160.20	607	155.27	142.68	180.47	4 933	4 991	-1.2 %	
451 - 600 lbs	21	152.59	131.83	165.88	50	147.74	124.54	164.92	247	321	-23.1 %	
301 - 450 lbs	18	208.40	182.03	237.06	27	152.64	122.87	207.96	201	252	-20.2 %	
126 - 300 lbs	125	253.72	145.78	362.98	181	305.68	211.25	426.13	1 347	1 337	0.7 %	
- 125 lbs	848	299.85	227.91	361.97	933	417.25	316.88	491.81	9 251	9 405	-1.6 %	

Source: Beef Farmers of Ontario

Federally Inspected Slaughter									
	Weekly			Year to date			Carcass Weight (lbs - Jan-Feb.)		
	2016	2015	% chg	2016	2015	% chg	2016	2015	% chg
Ontario	357	240	48.8 %	3 248	3 018	7.6 %	383	349	9.7 %
Quebec / Atlantic	3 699	3 488	6.0 %	34 135	34 614	-1.4 %	316	368	-14.1 %
<b>Canada</b>	<b>4 056</b>	<b>3 728</b>	<b>8.8 %</b>	<b>37 383</b>	<b>37 632</b>	<b>-0.7 %</b>	<b>320</b>	<b>366</b>	<b>-12.6 %</b>

Source: Canadian Beef Grading Agency      Source: CFIA

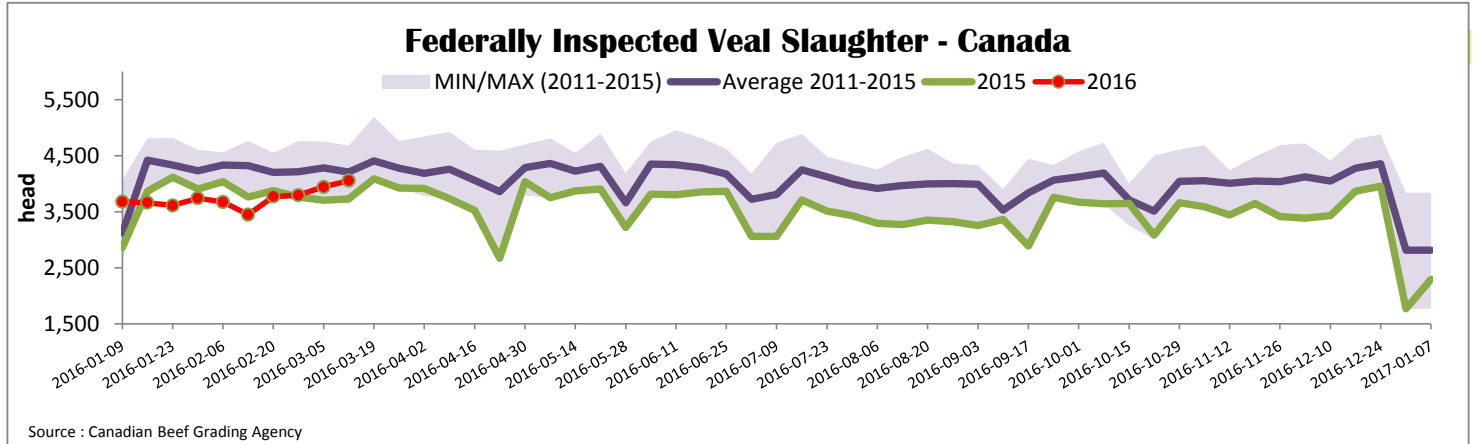
Exports					Imports				
Total veal (tonnes)	Jan. 1 - Jan. 31, 2016				Total veal (tonnes)	Jan. 1 - March 12, 2016			
	2016	2015	% chg			2016	2015	% chg	
United States	34	161	-78.9 %		United States	276	78	-	
United Arab Emirates	28	21	34.7 %		Australia	61	109	-	
Cuba	1	0	-		New Zealand	35	13	-	
Others	0	0	-		Others	12	0	-	
<b>Total</b>	<b>63</b>	<b>182</b>	<b>-65.5 %</b>		<b>Total</b>	<b>384</b>	<b>200</b>	<b>-</b>	

Source: CFIA

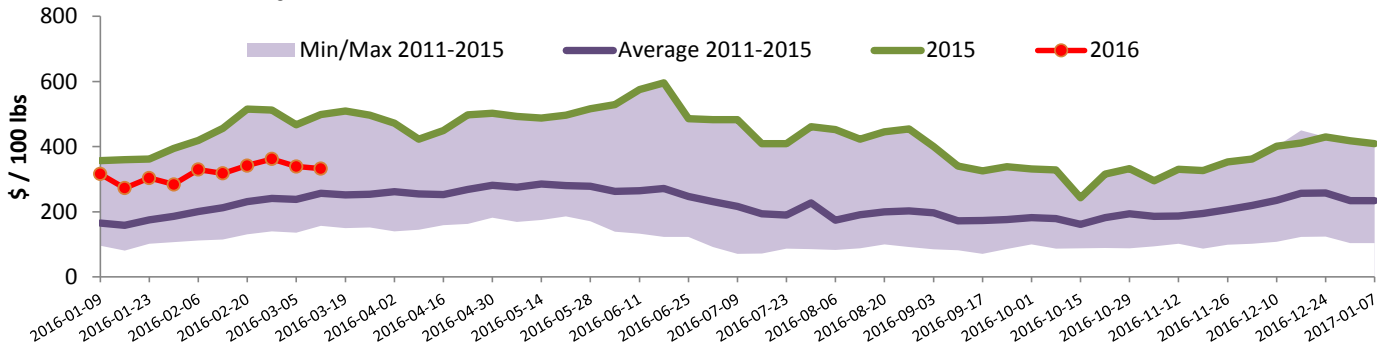
Exports					Imports				
Live calves (head)	Jan. 1 - Jan. 31				Live calves (head)	For the period Jan. 1 - Dec. 31			
	2016	2015	% chg			2014	2013	% chg	
	26	396	-		32 457	38 377	-		

Source: Statistics Canada      Source: CFIA



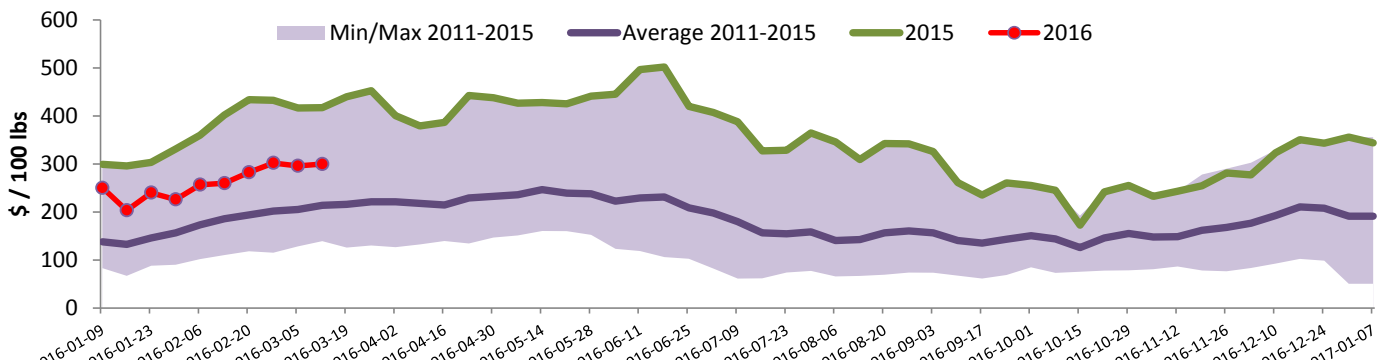


### Quebec Veal Prices - Male: Good 90-120 lbs



Source : Fédération des producteurs de bovins du Québec

### Ontario Veal Prices - 125 lbs and less



Source : Beef Farmers of Ontario

## United States

Week ending March 5, 2016

Federally Inspected Slaughter				Northeast and North Central U.S. Wholesale Price						
	Weekly			Year to date			\$/100 lbs	Simple avg	Min	Max
	2016	2015	% chg	2016	2015	% chg				
Milk-fed or nature *							307 Rack, Ribeye, Boneless	2 095.00	2 095.00	2 095.00
North East	2 985	2 783	7.3 %	26 516	27 186	-2.5 %	332 Loin, Trimmed 4x4	665.00	615.00	715.00
North Central	2 173	2 165	0.4 %	21 266	22 319	-4.7 %	1336 Leg slice, Retail	1 082.50	865.00	1 300.00
<b>Total</b>	<b>5 158</b>	<b>4 948</b>	<b>4.2 %</b>	<b>47 782</b>	<b>49 505</b>	<b>-3.5 %</b>	1312 Osso Buco, Fore Shank	842.50	590.00	1 095.00
Other calves	3 068	4 013	-23.5 %	34 929	32 711	6.8 %	Shoulder Clod, Chuck	727.50	600.00	855.00
<b>Total</b>	<b>8 226</b>	<b>8 961</b>	<b>-8.2 %</b>	<b>82 711</b>	<b>82 216</b>	<b>0.6 %</b>				
Production							<b>Pennsylvania Vintage Calf Auction</b> Graded Holstein Bull Calves March 1, 2016			
Calves (million lbs)	1.5	1.6	-6.3 %	14.0	14.4	-2.8 %		\$ / 100 lbs	Min	Max
Live weight (lbs)	281	291	-3.4 %				Number 1	113 - 122 lbs	210.00	230.00
Dressed weight (lbs)	165	172	-4.1 %					95 - 103 lbs	265.00	270.00
								85 - 90 lbs	225.00	225.00
<b>Northeast and North Central</b> (Veal Carcass, Hot Basis – Paid to Producer (Hide off, 255-315 lbs)) * Special fed : milk fed, nature \$US / 100 lbs							Number 2	103 - 114 lbs	180.00	195.00
Non-Packer Owned								85 - 103 lbs	214.00	227.00
								73 lbs	210.00	210.00
Packer Owned							Number 3	95 - 109 lbs	165.00	177.00
								83 - 84 lbs	195.00	207.00
								74 - 82 lbs	215.00	217.00

Source : USDA

Source : USDA