

### Veal Supply at a Glance - Canada

For week ending February 3, 2018

Quebec Live Auction											
	2018				2017				Volume (YTD)		
	Number	Price ( \$ / 100 lbs)			Number	Price ( \$ / 100 lbs)			head		
Dairy Calves	(head)	Average	Min	Max	(head)	Average	Min	Max	2018	2017	% chg
Male											
Good 90 -120 lbs	718	124.00	110.00	135.00	672	166.00	150.00	180.00	3 234	3 614	-10.5 %
Good 121 - 140 lbs	191	125.00	110.00	135.00	162	161.00	150.00	185.00	905	945	-4.2 %
Average 90 - 140 lbs	714	103.00	75.00	125.00	668	143.00	120.00	170.00	2 902	3 265	-11.1 %
Misc. - All weights	395	40.00	20.00	80.00	404	66.00	20.00	125.00	2 349	1 926	22.0 %
Female											
Good 90 -120 lbs	49	165.00	100.00	250.00	56	207.00	150.00	300.00	196	327	-40.1 %
A2 Grain fed veal calves (hide off)	1 296	302.70	n/a	n/a	1 408	251.30	n/a	n/a	6 078	6 748	-9.9 %
596 lbs live / 325-353 lbs hide off											

Source: Les producteurs de bovins du Québec

	2018				2017				Volume (YTD)		
	Number	Price ( \$ / 100 lbs)			Number	Price ( \$ / 100 lbs)			head		
	(head)	Average	Min	Max	(head)	Average	Min	Max	2018	2017	% chg
+ 600 lbs	593	160.45	134.14	176.86	508	124.77	105.51	141.60	2 737	2 513	8.9 %
451 - 600 lbs	31	132.24	111.58	145.58	43	121.77	106.39	136.05	206	195	5.6 %
301 - 450 lbs	36	141.04	104.58	175.02	44	135.06	93.54	180.55	132	207	-36.2 %
126 - 300 lbs	120	128.95	93.56	207.41	120	134.90	94.01	188.91	583	672	-13.2 %
- 125 lbs	847	114.73	66.52	202.11	728	143.00	102.23	197.31	4 190	3 941	6.3 %

Source: Beef Farmers of Ontario

	Weekly			Year to date			Carcass Weight lbs (Jan-December)		
	2018	2017	% chg	2018	2017	% chg	2017	2016	% chg
Ontario	197	465	-57.6 %	953	1 423	-33.0 %	382	375	1.8 %
Quebec	3 742	3 723	0.5 %	16 747	17 493	-4.3 %	321	318	1.1 %
<b>Canada</b>	<b>3 939</b>	<b>4 188</b>	<b>-5.9 %</b>	<b>17 700</b>	<b>18 916</b>	<b>-6.4 %</b>	<b>325</b>	<b>322</b>	<b>0.9 %</b>

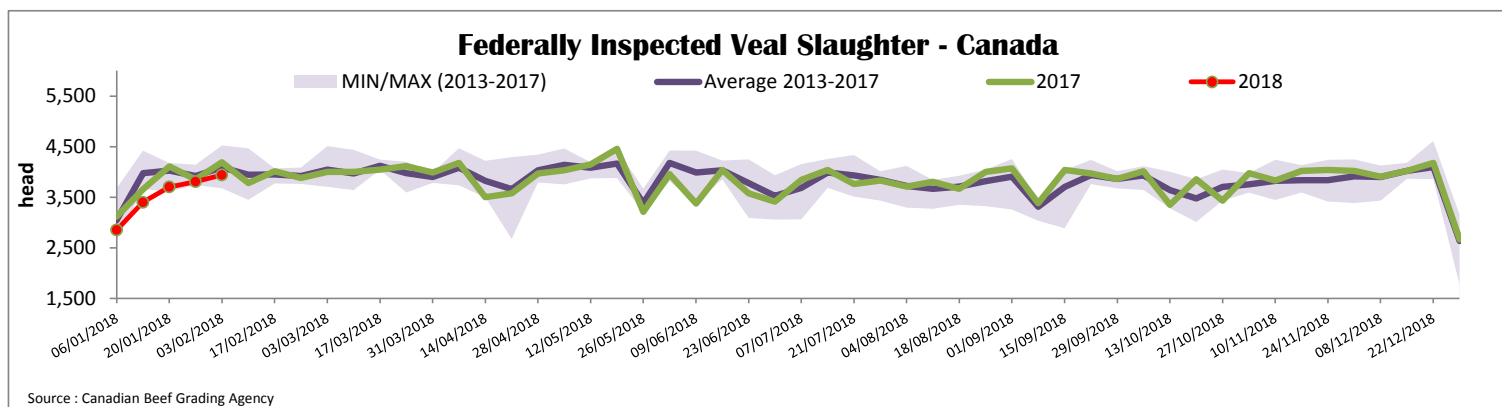
Source: Canadian Beef Grading Agency

Source: CFIA

Exports				Imports			
Total veal (tonnes)	Jan. 1 - Dec. 30, 2017			Total veal (tonnes)	Jan. 1 - Feb. 3, 2018		
	2017	2016	% chg	2018	2017	% chg	
United States	3 979	3 326	19.6 %	96	158	-39.0 %	
United Arab Emirates	167	204	-18.2 %	68	19	250.4 %	
Saudi Arabia	40	6	621.6 %	49	3		
Germany	7	0	-	20	2	700.9 %	
Others	6	9	-31.4 %	0	0	-	
<b>Total</b>	<b>4 199</b>	<b>3 545</b>	<b>18.5 %</b>	<b>233</b>	<b>183</b>	<b>27.4 %</b>	
				<b>EU-28 (Veal total)</b>	49	3	-

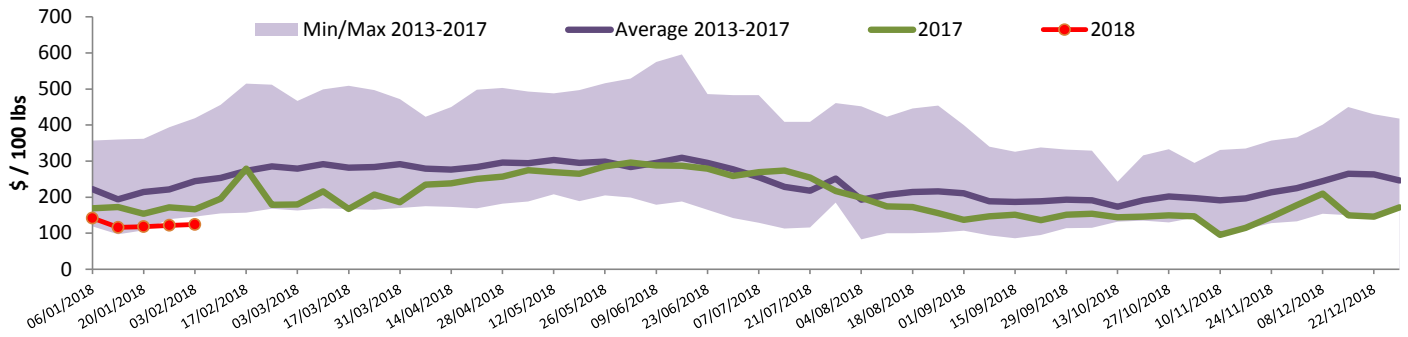
Source: Statistics Canada

Source: CFIA



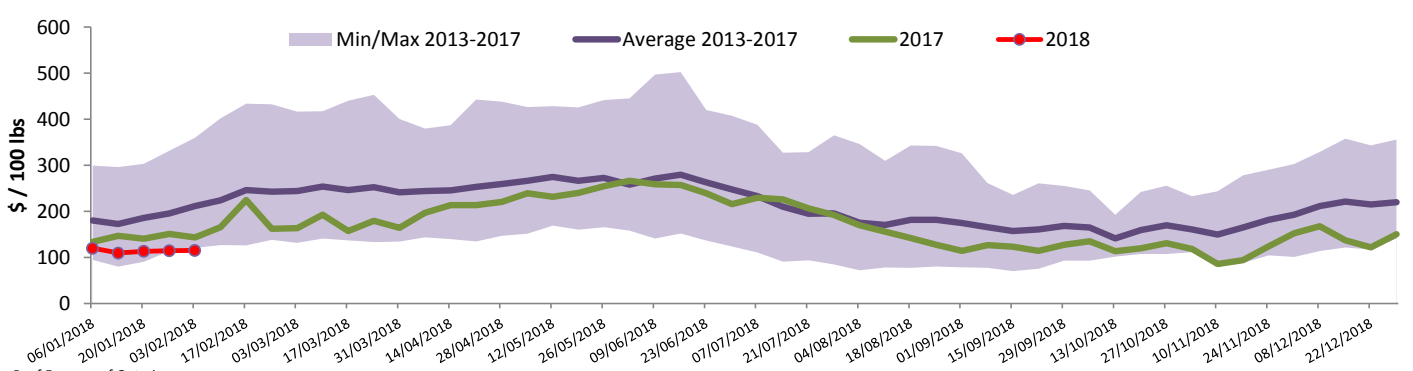


### Quebec Veal Prices - Male: Good 90-120 lbs



Source : Fédération des producteurs de bovins du Québec

### Ontario Veal Prices - 125 lbs and less



Source : Beef Farmers of Ontario

## United States

Week ending January 27, 2018

#### Federally Inspected Slaughter

	Weekly			Year to date		
	2018	2017	% chg	2018	2017	% chg
Milk-fed or nature *						
North East	2 082	2 172	-4.1 %	8 397	8 425	-0.3 %
North Central	1 662	1 857	-10.5 %	6 818	7 325	-6.9 %
<b>Total</b>	<b>3 744</b>	<b>4 029</b>	<b>-7.1 %</b>	<b>15 215</b>	<b>15 750</b>	<b>-3.4 %</b>
Other calves	6 521	6 337	2.9 %	27 166	26 011	4.4 %
<b>Total</b>	<b>10 265</b>	<b>10 366</b>	<b>-1.0 %</b>	<b>42 381</b>	<b>41 761</b>	<b>1.5 %</b>
Production						
Calves (million lbs)	1.4	1.4	0.0 %	4.3	4.2	2.4 %
Live weight (lbs)	235	238	-1.3 %			
Dressed weight (lbs)	137	139	-1.4 %			

Source : USDA

#### Northeast and North Central U.S. Wholesale Price

	January 2018 Wholesale Price		
	\$/100 lbs	Simple avg	Min Max
307 Rack, Ribeye, Boneless	1 725.00	1 725.00	1 725.00
332 Loin, Trimmed 4x4	625.00	575.00	675.00
1336 Leg slice, Retail	910.00	825.00	995.00
1312 Osso Buco, Foreshank	795.00	695.00	895.00
Shoulder Clod, Chuck	675.00	525.00	825.00

Source : USDA

#### Pennsylvania Vintage Calf Auction

		January 23, 2018		
		\$/ 100 lbs	Min	Max
Number 1	112 - 123 lbs		87.00	90.00
	95 - 102 lbs		105.00	120.00
Number 2	95 - 114 lbs		90.00	97.00
	84 - 90 lbs		72.00	85.00
Number 3	83 - 111 lbs		60.00	75.00
	74 lbs		37.00	37.00

Source : USDA

#### Northeast and North Central

(Veal Carcass, Hot Basis – Paid to Producer (Hide off, 255-315 lbs))

\* Special fed : milk fed, nature

\$/US / 100 lbs	Weighted Average Price	Min	Max
Non-Packer Owned	320.67	295.00	330.00
Packer Owned	319.40	314.00	330.00

Source : USDA

Prepared by : Redmeat Section, Agriculture and Agri-Food Canada

Website : <http://www.agr.gc.ca/redmeat>

Contact : Julie Dawson

613 773 0149 or Julie.Dawson@agr.gc.ca