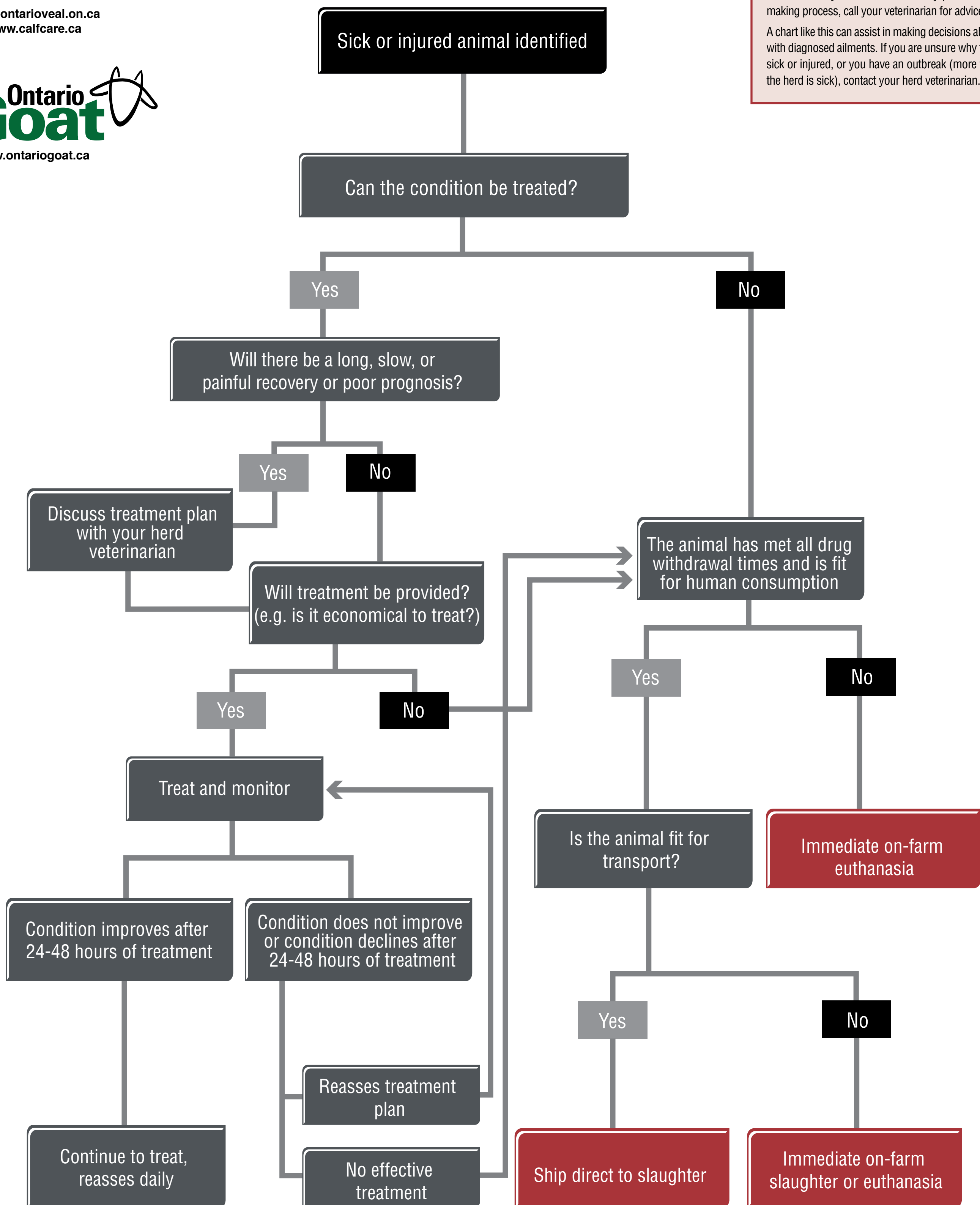


# Sample euthanasia decision tree

Veal Farmers of Ontario and Ontario Goat are not responsible for any decisions made using this example decision making chart.

Discuss this decision making chart with your veterinarian before use. If you are in doubt at any point in the decision making process, call your veterinarian for advice.

A chart like this can assist in making decisions about animals with diagnosed ailments. If you are unsure why the animal is sick or injured, or you have an outbreak (more than 10% of the herd is sick), contact your herd veterinarian.



Emergency slaughter or on-farm slaughter must comply with the Meat Regulation.  
See <http://omafra.gov.on.ca/> for more details.

Not all euthanasia methods result in a carcass that is suitable for human or animal consumption. Contact your herd veterinarian for more information.