

### Veal Supply at a Glance - Canada

For week ending September 14, 2019

Quebec Live Auction											
	2019				2018				Volume (YTD)		
	Number (head)	Price (\$ / 100 lbs)			Number (head)	Price (\$ / 100 lbs)			head		
Dairy Calves		Average	Min	Max		Average	Min	Max	2019	2018	% chg
Holstein Male											
Good 90 -120 lbs	758	113.00	90.00	135.00	841	100.00	80.00	125.00	23 192	26 951	-13.9 %
Good 121 - 140 lbs	175	114.00	95.00	135.00	160	103.00	65.00	120.00	7 248	6 758	7.3 %
Average 90 - 140 lbs	457	89.00	60.00	120.00	572	73.00	50.00	95.00	17 105	21 561	-20.7 %
Misc. - All weights	327	37.00	20.00	70.00	478	36.00	20.00	80.00	11 037	15 054	-26.7 %
Holstein Female											
Good 90 -120 lbs	81	84.00	40.00	125.00	55	75.00	50.00	110.00	2 147	1 927	11.4 %
Other milk breeds (all weights)	34	53.00	15.00	130.00	41	51.00	20.00	115.00	1 044	1 540	-32.2 %
Crossbreeds dairy-butcher (all weights)	566	231.00	95.00	400.00	390	183.00	85.00	275.00	14 484	11 424	-21.1 %
A2 Grain fed veal calves (hide off)	1 152	215.00	n/a	n/a	1 242	238.87	n/a	n/a	51 744	48 859	5.9 %
596 lbs live / 325-353 lbs hide off											

Ontario Live Auction											
	2019				2018				Volume (YTD)		
	Number (head)	Price (\$ / 100 lbs)			Number (head)	Price (\$ / 100 lbs)			head		
		Average	Min	Max		Average	Min	Max	2019	2018	% chg
+ 600 lbs	730	104.35	87.64	118.55	684	116.02	98.24	131.64	27 140	25 119	8.0 %
451 - 600 lbs	45	93.54	72.64	108.87	42	108.48	89.15	125.51	1 874	1 590	17.9 %
301 - 450 lbs	64	116.94	85.78	165.55	35	149.79	119.62	166.85	1 476	1 057	39.6 %
126 - 300 lbs	131	120.92	74.66	238.84	152	120.99	82.38	223.75	4 721	3 979	18.6 %
- 125 lbs	883	115.81	63.46	297.71	942	89.78	47.93	218.17	29 778	31 568	-5.7 %

Source: Beef Farmers of Ontario

Federally Inspected Slaughter									
	Weekly			Year to date			Carcass Weight lbs (Jan-July.)		
	2019	2018	% chg	2019	2018	% chg	2019	2018	% chg
Quebec	2 918	3 447	-15.3 %	117 389	127 317	-7.8 %	349	328	6.4 %
Rest of Canada	198	192	3.1 %	6 050	6 568	-7.9 %	375	374	0.3 %
<b>Canada</b>	<b>3 116</b>	<b>3 639</b>	<b>-14.4 %</b>	<b>123 439</b>	<b>133 885</b>	<b>-7.8 %</b>	<b>350</b>	<b>330</b>	<b>6.2 %</b>

Source: Canadian Beef Grading Agency

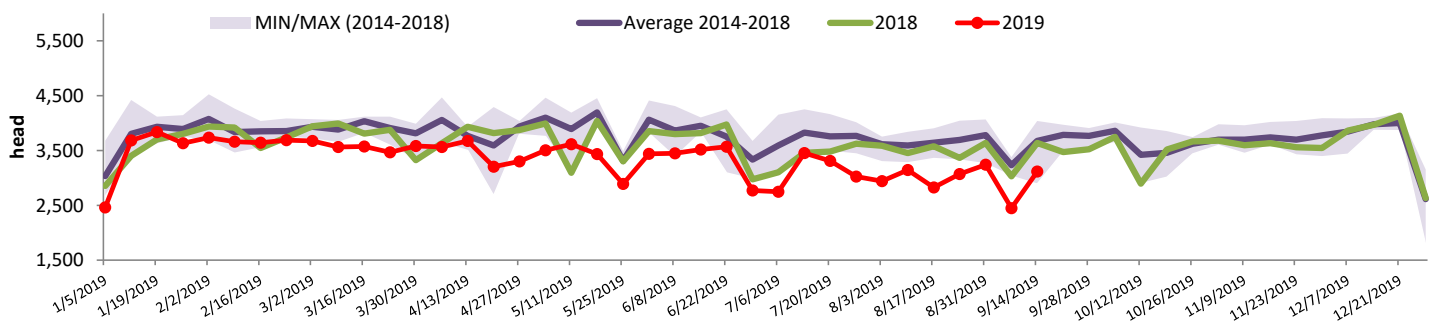
Source: Canadian Food Inspection Agency (CFIA)

Domestic Exports					Imports				
	Jan. 1 - July 31, 2019					Jan. 1 - Sept. 14, 2019			
	2019	2018	% chg			2019	2018	% chg	
Total veal (tonnes)					Total veal (tonnes)				
United States	1 554	2 570	-39.5 %		United States	997	784	27.1 %	
United Arab Emirates	131	105	24.4 %		Netherlands	215	267	-19.4 %	
Saint Pierre and Miquelon	7	9	-23.6 %		Australia	174	241	-27.6 %	
Others	7	2	202.3 %		New Zealand	163	309	-47.3 %	
<b>Total</b>	<b>1 698</b>	<b>2 687</b>	<b>-36.8 %</b>		<b>Total</b>	<b>1 572</b>	<b>1 614</b>	<b>-2.6 %</b>	
					<b>EU-28 (Veal total)</b>	216	267	-19.2 %	

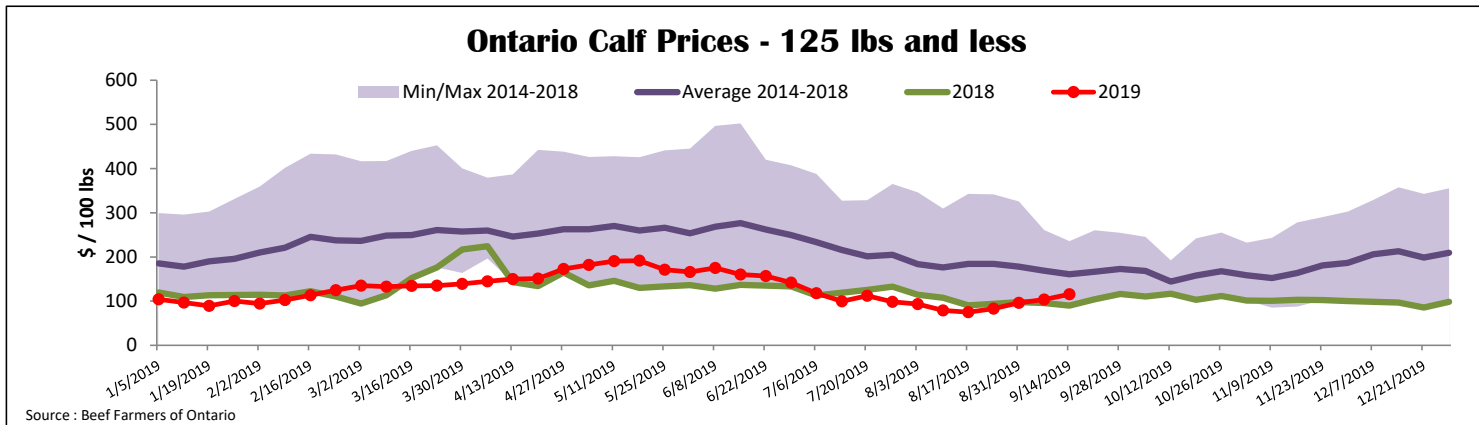
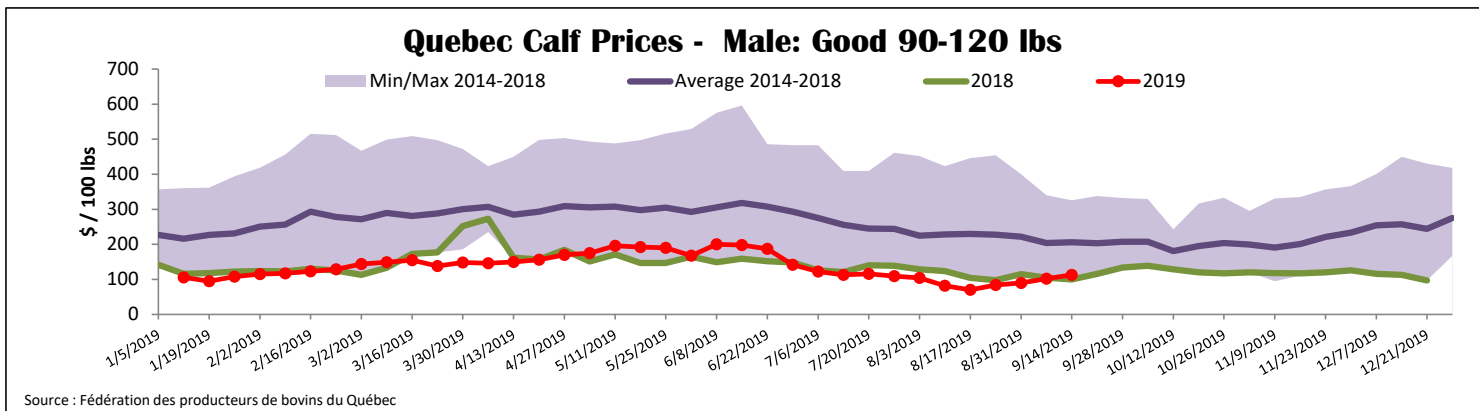
Source: Statistics Canada

Source: CFIA

### Federally Inspected Calf Slaughter - Canada



Source: Canadian Beef Grading Agency



## United States

Week ending September 7, 2019

	Federally Inspected Slaughter			Year to date			Northeast and North Central U.S. Wholesale Price			
	2019	2018	% chg	2019	2018	% chg	August 2019 Wholesale Price			
Milk-fed or nature *							\$/100 lbs	Simple avg	Min	Max
North East & North Central	3 104	3 067	1.2 %	128 140	131 042	-2.2 %	307 Rack, Ribeye	1 825.00	1 825.00	1 825.00
Other calves	7 477	7 531	-0.7 %	264 888	242 697	9.1 %	332 Loin, Trimmed 4x4	592.50	510.00	675.00
<b>Total</b>	<b>10 581</b>	<b>10 598</b>	<b>-0.2 %</b>	<b>393 028</b>	<b>373 739</b>	<b>5.2 %</b>	1336 Leg slice, Retail	862.50	750.00	975.00
Production*							1312 Osso Buco, Fores Shank	785.00	675.00	895.00
Calves (million lbs)	1.2	1.3	-7.7 %	49.0	49.3	-0.6 %	Shoulder Clod, Chuck	675.00	525.00	825.00
Live weight (lbs)	203	209	-2.9 %							
Dressed weight (lbs)	117	121	-3.3 %							

Source : USDA

#### Northeast and North Central

(Veal Carcass, Hot Basis – Paid to Producer (Hide off, 255-315 lbs))

\* Special fed : milk fed, nature

\$US / 100 lbs	Weighted Average Price		
	Min	Max	
Non-Packer & Packers Owned	309.74	303.00	315.00

Source : USDA

#### Pennsylvania Vintage Calf Auction

August 22, 2019

	Weight	Head	\$/ 100 lbs	
			Min	Max
Number 1	- 89 lbs	12	32.00	65.00
	90 - 120 lbs	197	40.00	130.00
	+ 120 lbs	5	77.50	125.00
Beef Cross		21	140.00	250.00
Number 2	- 100 lbs	150	25.00	85.00
	+ 100 lbs	97	45.00	90.00
Number 3	- 100 lbs	350	15.00	65.00
	+ 100 lbs	71	15.00	60.00

\* Does not include all head sold

**\*\*This data remains unchanged from the August 31 Veal Supply at a Glance**

Source : USDA