



## Veal Supply at a Glance - Canada

For week ending April 22, 2017

Quebec Live Auction											
	2017				2016				Volume (YTD)		
	Number (head)	Price ( \$ / 100 lbs)			Number (head)	Price ( \$ / 100 lbs)			head		
Dairy Calves											
Male		Average	Min	Max		Average	Min	Max	2017	2016	% chg
Good 90 - 120 lbs	516	251.00	220.00	290.00	784	238.00	220.00	260.00	11 378	13 749	-17.2 %
Good 121 - 140 lbs	158	249.00	210.00	295.00	147	228.00	200.00	260.00	2 879	2 749	4.7 %
Average 90 - 140 lbs	532	207.00	135.00	280.00	561	195.00	150.00	235.00	8 988	9 705	-7.4 %
Misc. - All weights	380	77.00	15.00	150.00	421	80.00	20.00	190.00	5 351	6 629	-19.3 %
Female											
Good 90 - 120 lbs	50	263.00	200.00	355.00	120	266.00	220.00	400.00	1 039	1 592	-34.7 %
A2 Grain fed veal calves (hide off)	1 215	245.00	n/a	n/a	1 557	265.00	n/a	n/a	23 618	22 967	2.8 %
596 lbs live - (325-353 lbs hide off)											

Source: Les producteurs de bovins du Québec

Ontario Live Auction											
	2017				2016				Volume (YTD)		
	Number (head)	Price ( \$ / 100 lbs)			Number (head)	Price ( \$ / 100 lbs)			head		
+ 600 lbs	674	110.27	98.82	121.76	570	118.23	106.32	129.24	8 889	8 137	9.2 %
451 - 600 lbs	48	96.57	74.63	114.45	42	122.21	103.33	142.50	631	431	46.4 %
301 - 450 lbs	28	110.68	92.18	133.14	26	167.53	103.29	214.61	555	336	65.2 %
126 - 300 lbs	80	165.92	116.48	218.65	110	182.32	139.12	239.59	1 813	1 966	-7.8 %
- 125 lbs	727	213.71	155.68	268.73	846	216.68	142.33	275.19	12 190	14 240	-14.4 %

Source: Beef Farmers of Ontario

Federally Inspected Slaughter										
	Weekly			Year to date			Carcass Weight (lbs -March)			
	2017	2016	% chg	2017	2016	% chg	2017	2016	% chg	
Ontario	249	291	-14.4 %	4 334	4 809	-9.9 %	388	381	1.9 %	
Quebec	3 330	4 002	-16.8 %	57 648	56 885	1.3 %	324	317	2 %	
<b>Canada</b>	<b>3 579</b>	<b>4 293</b>	<b>-16.6 %</b>	<b>61 982</b>	<b>61 694</b>	<b>0.5 %</b>	<b>320</b>	<b>321</b>	<b>-0.2 %</b>	

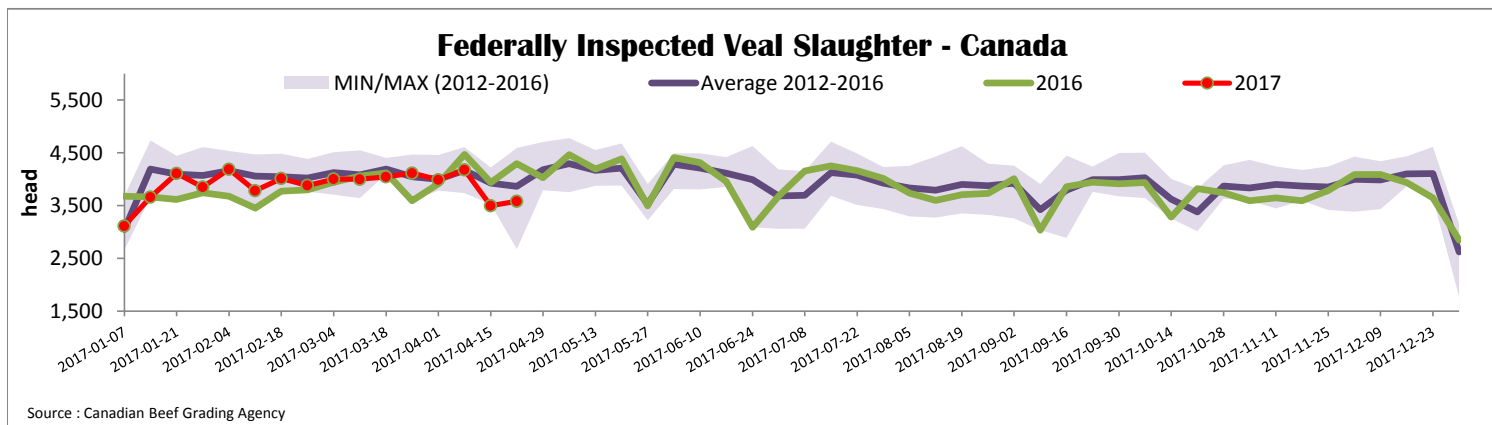
Source: Canadian Beef Grading Agency

Source: CFIA

Exports				Imports			
Total veal (tonnes)	Jan. 1 - Feb. 28, 2017			Total veal (tonnes)	Jan. 1 - April 22, 2017		
	2017	2016	% chg		2017	2016	% chg
United States	648	161	301.5 %	United States	639	377	69.5 %
United Arab Emirates	33	56	-41.8 %	Australia	48	108	-55.5 %
Saudi Arabia	8	0	-	New Zealand	19	35	-44.0 %
Hong Kong	0.6	0	-	Netherlands	18	0	-
Others	0.6	0.8	-29.1 %	Chile	0	12	-
<b>Total</b>	<b>690</b>	<b>218</b>	<b>215.8 %</b>	<b>Total</b>	<b>725</b>	<b>532</b>	<b>36.1 %</b>

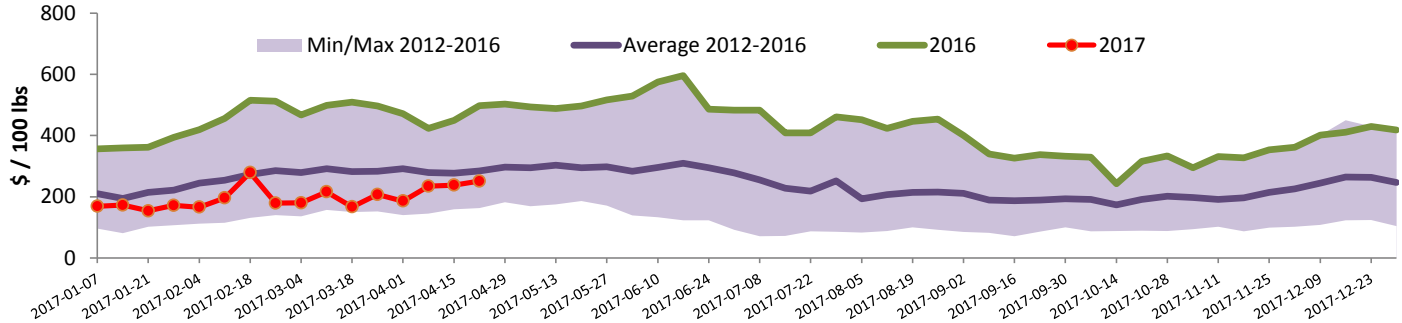
Source: Statistics Canada

Source: CFIA



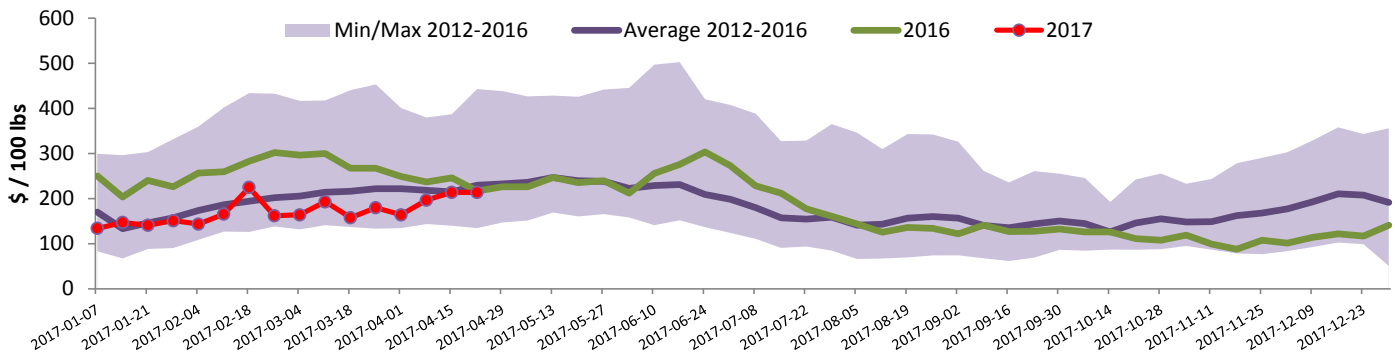


### Quebec Veal Prices - Male: Good 90-120 lbs



Source : Fédération des producteurs de bovins du Québec

### Ontario Veal Prices - 125 lbs and less



Source : Beef Farmers of Ontario

## United States

Week ending April 15, 2017

#### Federally Inspected Slaughter

	Weekly			Year to date		
	2017	2016	% chg	2017	2016	% chg
Milk-fed or nature *						
North East	2 002	2 197	-8.9 %	32 149	37 452	-14.2 %
North Central	1 907	2 229	-14.4 %	26 964	31 592	-14.6 %
<b>Total</b>	<b>3 909</b>	<b>4 426</b>	<b>-11.7 %</b>	<b>59 113</b>	<b>69 044</b>	<b>-14.4 %</b>
Other calves	5 911	3 598	64.3 %	90 200	60 133	50.0 %
<b>Total</b>	<b>9 820</b>	<b>8 024</b>	<b>22.4 %</b>	<b>149 313</b>	<b>129 177</b>	<b>15.6 %</b>
Production						
Calves (million lbs)	1.4	1.4	0.0 %	20.7	21.9	-5.5 %
Live weight (lbs)	250	303	-17.5 %			
Dressed weight (lbs)	147	180	-18.3 %			

Source : USDA

#### Northeast and North Central U.S. Wholesale Price

	\$/100 lbs	Simple avg	Min	Max
307 Rack, Ribeye, Boneless	1 695.00	1 695.00	1 695.00	1 695.00
332 Loin, Trimmed 4x4	587.50	550.00	625.00	
1336 Leg slice, Retail	895.00	795.00	995.00	
1312 Osso Buco, Fore Shank	835.00	620.00	1 050.00	
Shoulder Clod, Chuck	690.00	525.00	855.00	

Source : USDA

#### Pennsylvania Vintage Calf Auction

		April 11, 2017		
		\$/ 100 lbs	Min	Max
Graded Holstein Bull Calves				
Number 1	121 lbs		170.00	170.00
	112 lbs		217.00	217.00
	95-102 lbs		240.00	240.00
Number 2	113 lbs		225.00	225.00
	95-103 lbs		245.00	257.00
	84-90 lbs		135.00	155.00
Number 3	107-108 lbs		122.00	125.00
	82-97 lbs		142.00	155.00
	75lbs		135.00	135.00

Source : USDA

#### Northeast and North Central

(Veal Carcass, Hot Basis – Paid to Producer (Hide off, 255-315 lbs))

\* Special fed : milk fed, nature

\$/US / 100 lbs	Weighted Average Price	Min	Max
Non-Packer Owned	307.12	285.00	315.00
Packer Owned	298.74	298.00	300.00

Source : USDA