



Veal Supply at a Glance - Canada

For week ending August 12, 2017

Quebec Live Auction											
	2017				2016				Volume (YTD)		
	Number (head)	Average	Price (\$ / 100 lbs) Min	Price (\$ / 100 lbs) Max	Number (head)	Average	Price (\$ / 100 lbs) Min	Price (\$ / 100 lbs) Max	2017 head	2016 head	% chg
Dairy Calves											
Male											
Good 90 - 120 lbs	995	174.00	155.00	195.00	791	165.00	135.00	190.00	22 734	26 227	-13.3 %
Good 121 - 140 lbs	208	168.00	145.00	195.00	155	159.00	130.00	190.00	5 450	5 390	1.1 %
Average 90 - 140 lbs	997	141.00	120.00	165.00	871	133.00	100.00	170.00	18 532	20 448	-9.4 %
Misc. - All weights	761	74.00	30.00	125.00	754	61.00	20.00	110.00	11 298	13 299	-15.0 %
Female											
Good 90 - 120 lbs	85	202.00	150.00	290.00	107	180.00	120.00	285.00	2 099	3 377	-37.8 %
A2 Grain fed veal calves (hide off)	1 104	250.90	n/a	n/a	1 323	250.00	n/a	n/a	45 355	44 777	1.3 %
596 lbs live / 325-353 lbs hide off											

Source: Les producteurs de bovins du Québec

Ontario Live Auction											
	2017				2016				Volume (YTD)		
	Number (head)	Average	Price (\$ / 100 lbs) Min	Price (\$ / 100 lbs) Max	Number (head)	Average	Price (\$ / 100 lbs) Min	Price (\$ / 100 lbs) Max	2017 head	2016 head	% chg
+ 600 lbs	617	125.49	114.19	139.62	616	114.33	105.41	123.94	20 075	17 860	12.4 %
451 - 600 lbs	25	113.53	103.96	122.44	27	105.03	89.80	118.94	1 164	817	42.5 %
301 - 450 lbs	12	158.52	135.20	190.70	31	165.94	108.19	206.35	985	703	40.1 %
126 - 300 lbs	101	170.90	119.90	232.73	135	128.51	92.41	167.90	3 411	3 913	-12.8 %
- 125 lbs	989	155.82	105.60	212.39	1 043	125.09	85.39	166.00	25 801	27 926	-7.6 %

Source: Beef Farmers of Ontario

Federally Inspected Slaughter									
	Weekly			Year to date			Carcass Weight lbs (Jan-June)		
	2017	2016	% chg	2017	2016	% chg	2017	2016	% chg
Ontario	191	276	-30.8 %	8 466	9 450	-10.4 %	383	375	2.0 %
Quebec	3 614	3 319	8.9 %	114 671	116 149	-1.3 %	324	319	1 %
Canada	3 805	3 595	5.8 %	123 137	125 599	-2.0 %	328	323	1.4 %

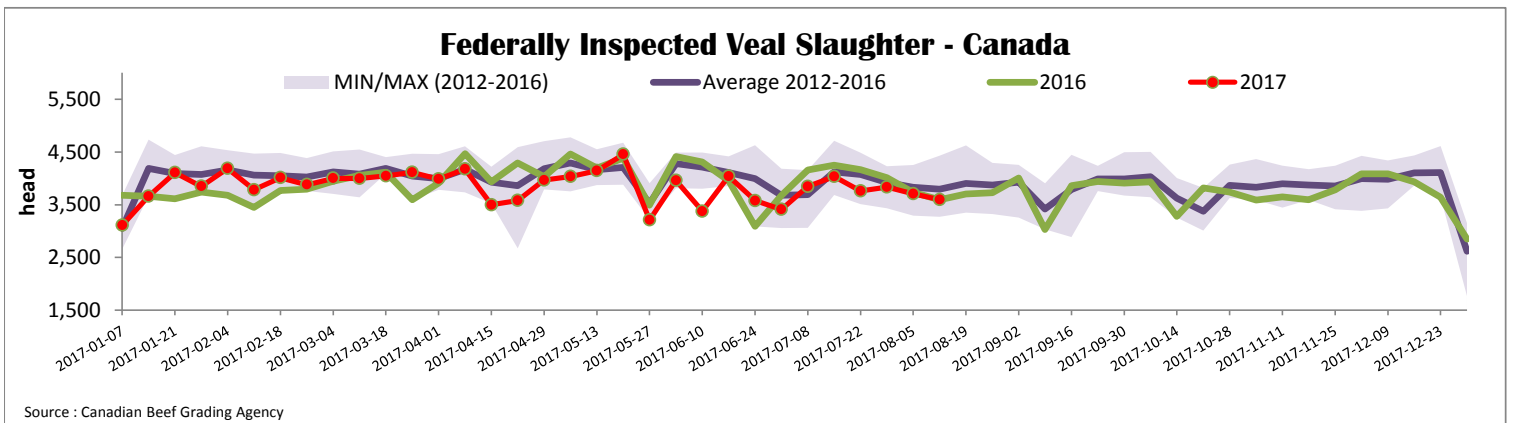
Source: Canadian Beef Grading Agency

Source: CFIA

Exports				Imports			
Total veal (tonnes)	Jan. 1 - June 30, 2017			Total veal (tonnes)	Jan. 1 - Aug. 12, 2017		
	2017	2016	% chg		2017	2016	% chg
United States	1 926	1 387	38.9 %	United States	1 087	830	31.0 %
United Arab Emirates	79	113	-29.8 %	Australia	104	358	-71.0 %
Saudi Arabia	23	6	-	Netherlands	32	28	14.3 %
Hong Kong	0.6	0	-	New Zealand	19	35	-44.0 %
Others	0.6	1.3	-56.4 %	Italy	7	0	-
Total	2 029	1 506	34.7 %	Others	0	12	-
				Total	1 249	1 262	-1.1 %

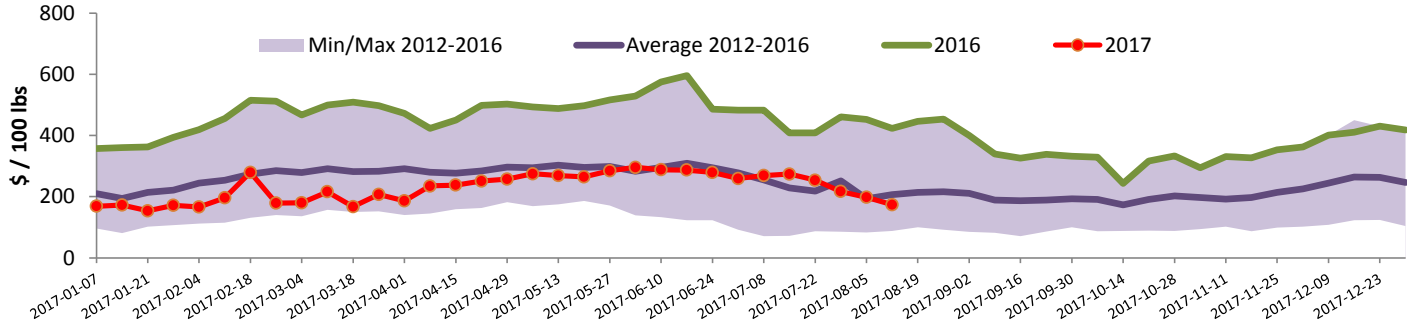
Source: Statistics Canada

Source: CFIA



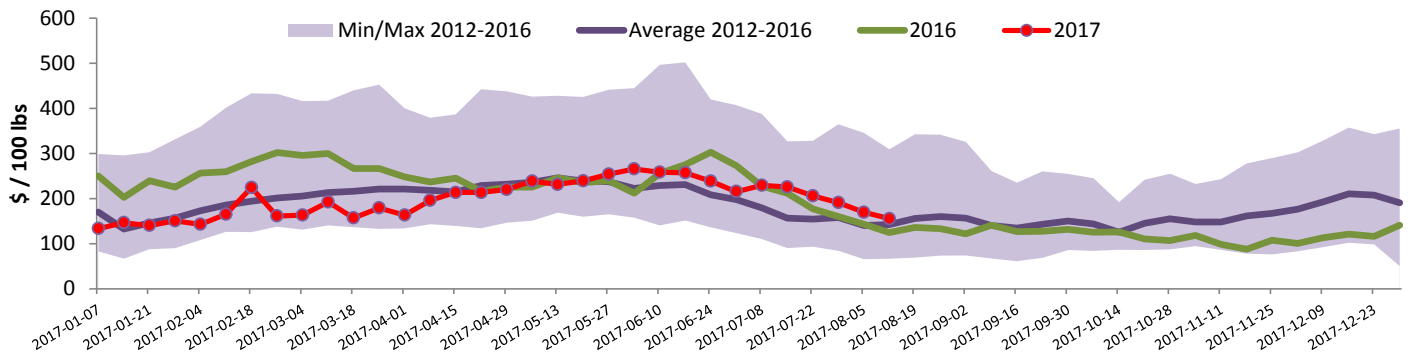


Quebec Veal Prices - Male: Good 90-120 lbs



Source : Fédération des producteurs de bovins du Québec

Ontario Veal Prices - 125 lbs and less



Source : Beef Farmers of Ontario

United States

Week ending August 5, 2017

Federally Inspected Slaughter

	Weekly			Year to date		
	2017	2016	% chg	2017	2016	% chg
Milk-fed or nature *						
North East	1 984	2 102	-5.6 %	65 793	70 067	-6.1 %
North Central	1 618	1 488	8.7 %	54 337	62 828	-13.5 %
Total	3 602	3 590	0.3 %	120 130	132 895	-9.6 %
Other calves	5 489	5 158	6.4 %	171 965	130 276	32.0 %
Total	9 091	8 748	3.9 %	292 095	263 171	11.0 %
Production						
Calves (million lbs)	1.3	1.2	8.3 %	42.6	43.4	-1.8 %
Live weight (lbs)	241	237	1.7 %			
Dressed weight (lbs)	141	138	2.2 %			

Source : USDA

Northeast and North Central U.S. Wholesale Price

\$/100 lbs	Simple avg	Min	Max
307 Rack, Ribeye, Boneless	1 725.00	1 725.00	1 725.00
332 Loin, Trimmed 4x4	620.00	590.00	650.00
1336 Leg slice, Retail	895.00	795.00	995.00
1312 Osso Buco, Fore Shank	780.00	610.00	950.00
Shoulder Clod, Chuck	675.00	525.00	825.00

Source : USDA

Pennsylvania Vintage Calf Auction

Graded Holstein Bull Calves		August 1, 2017	
	\$ / 100 lbs	Min	Max
Number 1	91-102 lbs	195.00	195.00
	75-85 lbs	165.00	185.00
Number 2	83-93 lbs	175.00	185.00
	71 lbs	135.00	135.00
Number 3	63-90 lbs	20.00	47.00

Source : USDA

Northeast and North Central

(Veal Carcass, Hot Basis – Paid to Producer (Hide off, 255-315 lbs))

* Special fed : milk fed, nature

\$US / 100 lbs	Weighted Average Price	Min	Max
Non-Packer Owned	307.76	295.00	313.00
Packer Owned	310.00	310.00	310.00

Source : USDA