



## Veal Supply at a Glance - Canada

For week ending December 24, 2016

Quebec Live Auction											
Dairy Calves	Number (head)	2016 Price (\$ / 100 lbs)			Number (head)	2015 Price (\$ / 100 lbs)			Volume (YTD) head		
		Average	Min	Max		Average	Min	Max	2016	2015	% chg
<b>Male</b>											
Good 90 -120 lbs	645	146.00	125.00	160.00	1 144	430.00	390.00	470.00	40 004	51 778	-22.7 %
Good 121 - 140 lbs	173	147.00	125.00	165.00	174	408.00	340.00	455.00	8 145	9 094	-10.4 %
Average 90 - 140 lbs	751	126.00	100.00	150.00	565	356.00	250.00	435.00	33 088	26 793	23.5 %
Misc. - All weights	533	52.00	20.00	110.00	361	155.00	14.00	380.00	23 731	19 925	19.1 %
<b>Female</b>											
Good 90 -120 lbs	63	183.00	120.00	275.00	144	403.00	350.00	460.00	4 932	6 266	-21.3 %
A2 Grain fed veal calves (hide off)	1 101	250.30	n/a	n/a	1 060	310.00	n/a	n/a	69 992	67 341	3.9 %
596 lbs live - (325-353 lbs hide off)											

Source: Les producteurs de bovins du Québec

Ontario Live Auction											
+ 600 lbs	Number (head)	2016 Price (\$ / 100 lbs)			Number (head)	2015 Price (\$ / 100 lbs)			Volume (YTD) head		
		Average	Min	Max		Average	Min	Max	2016	2015	% chg
+ 600 lbs	411	118.25	100.64	133.31	536	150.94	129.50	167.47	28 820	28 251	2.0 %
451 - 600 lbs	52	98.17	77.38	122.17	34	138.19	123.98	151.00	1 626	1 644	-1.1 %
301 - 450 lbs	19	106.46	91.71	126.39	43	174.54	138.79	234.35	1 493	1 474	1.3 %
126 - 300 lbs	100	116.88	81.65	160.89	122	242.31	147.20	344.63	6 090	6 398	-4.8 %
- 125 lbs	727	116.76	81.97	153.46	1 041	343.08	234.48	415.62	44 415	49 786	-10.8 %

Source: Beef Farmers of Ontario

Federally Inspected Slaughter									
	Weekly			Year to date			Carcass Weight (lbs - Jan-Oct.)		
	2016	2015	% chg	2016	2015	% chg	2016	2015	% chg
Ontario	217	282	-23.0 %	14 583	14 835	-1.7 %	375	365	2.7 %
Quebec / Atlantic	3 664	3 676	-0.3 %	182 577	168 502	8.4 %	319	325	-1.8 %
<b>Canada</b>	<b>3 881</b>	<b>3 958</b>	<b>-1.9 %</b>	<b>197 160</b>	<b>183 337</b>	<b>7.5 %</b>	<b>323</b>	<b>329</b>	<b>-1.8 %</b>

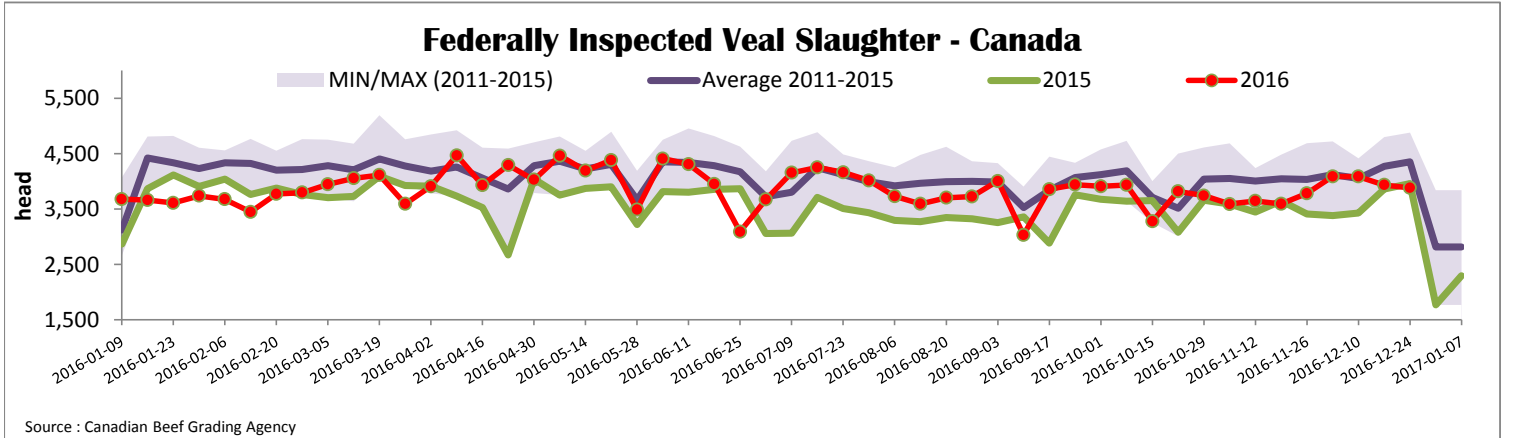
Source : Canadian Beef Grading Agency

Source: CFIA

Exports				Imports					
Total veal (tonnes)	Jan. 1 - Oct. 31, 2016	2016	2015	% chg	Total veal (tonnes)	Jan. 1 - Dec. 24, 2016	2016	2015	% chg
United States		2 769	1 598	73.3 %	New Zealand		1 246	1 186	5.0 %
United Arab Emirates		164	137	19.6 %	United States		1 318	957	37.8 %
Saudi Arabia		6	0		Australia		476	1 275	-62.7 %
Others		1	2	-21.4 %	Netherlands		28		
<b>Total</b>		<b>2 940</b>	<b>1 737</b>	<b>69.3 %</b>	Chile		23	21	9.2 %
					Others				
Live calves (head)	Jan. 1 - Oct. 31	3 340	5 159	-35.3 %	<b>Total</b>		<b>3 091</b>	<b>3 439</b>	<b>-10.1 %</b>

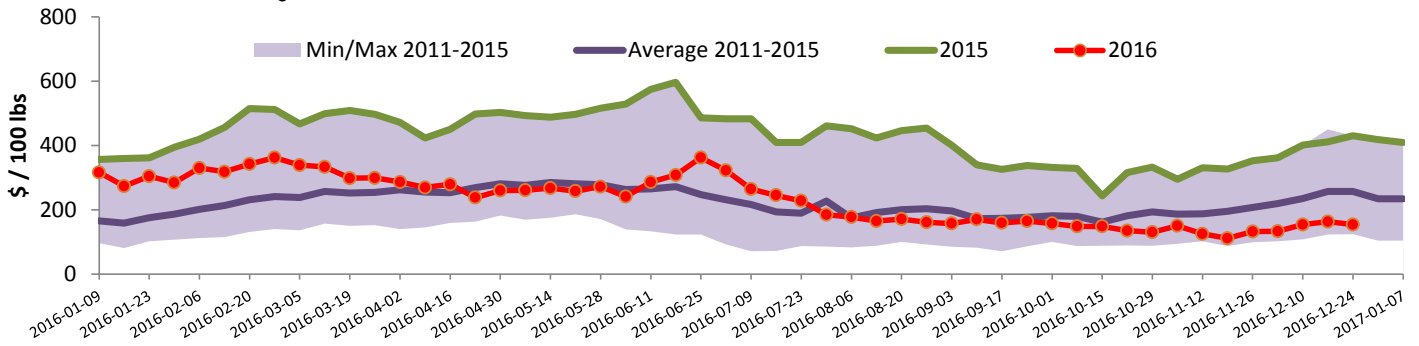
Source: Statistics Canada

Source: CFIA



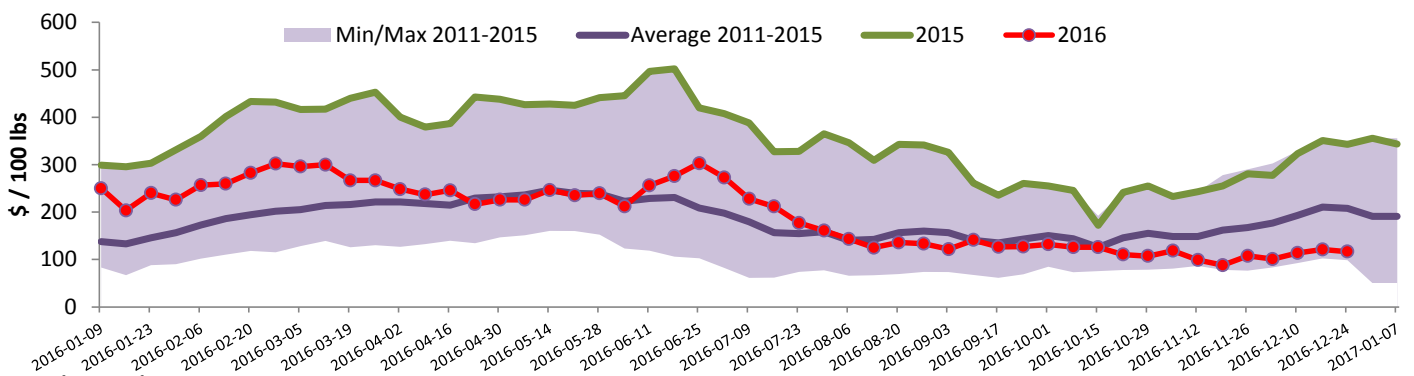


### Quebec Veal Prices - Male: Good 90-120 lbs



Source : Fédération des producteurs de bovins du Québec

### Ontario Veal Prices - 125 lbs and less



Source : Beef Farmers of Ontario

## United States

Week ending December 17, 2016

Federally Inspected Slaughter				Northeast and North Central U.S. Wholesale Price						
	Weekly			Year to date			\$/100 lbs	Simple avg	Min	Max
Milk-fed or nature *	<b>2016</b>	<b>2015</b>	% chg	<b>2016</b>	<b>2015</b>	% chg	307 Rack, Ribeye, Boneless	1 695.00	1 695.00	1 695.00
North East	2 473	2 931	-15.6 %	112 922	137 630	-18.0 %	332 Loin, Trimmed 4x4	615.00	580.00	650.00
North Central	1 921	2 054	-6.5 %	102 026	113 901	-10.4 %	1336 Leg slice, Retail	922.50	795.00	1 050.00
<b>Total</b>	<b>4 394</b>	<b>4 985</b>	<b>-11.9 %</b>	<b>214 948</b>	<b>251 531</b>	<b>-14.5 %</b>	1312 Osso Buco, Foreshank	850.00	650.00	1 050.00
Other calves	6 443	4 655	38.4 %	241 469	172 834	39.7 %	Shoulder Clod, Chuck	690.00	525.00	855.00
<b>Total</b>	<b>10 837</b>	<b>9 640</b>	<b>12.4 %</b>	<b>456 417</b>	<b>424 365</b>	<b>7.6 %</b>				
Production										
Calves (million lbs)	1.6	1.7	-5.9 %	70.4	77.9	-9.6 %				
Live weight (lbs)	248	303	-18.2 %							
Dressed weight (lbs)	146	179	-18.4 %							

Source : USDA

#### Pennsylvania Vintage Calf Auction

Graded Holstein Bull Calves				December 13, 2016	
		\$ / 100 lbs	Min	Max	
Number 1	93-104 lbs		210.00	225.00	
Number 2	102 lbs		202.00	202.00	
	82-92 lbs		215.00	232.00	
	73 lbs		170.00	170.00	
	65 lbs		75.00	75.00	

Source : USDA

Northeast and North Central						
(Veal Carcass, Hot Basis – Paid to Producer (Hide off, 255-315 lbs))						
* Special fed : milk fed, nature						
\$US / 100 lbs	Weighted Average Price			Min	Max	
Non-Packer Owned				308.41	285.00	332.00
Packer Owned				445.46	304.00	310.00

Source : USDA