



## Veal Supply at a Glance - Canada

For week ending July 8, 2017

Quebec Live Auction											
	2017				2016				Volume (YTD)		
	Number	Price ( \$ / 100 lbs)			Number	Price ( \$ / 100 lbs)			head		
Dairy Calves	(head)	Average	Min	Max	(head)	Average	Min	Max	2017	2016	% chg
Male											
Good 90 - 120 lbs	690	269.00	250.00	285.00	753	264.00	245.00	290.00	19 513	22 523	-13.4 %
Good 121 - 140 lbs	171	261.00	220.00	280.00	167	261.00	240.00	285.00	4 756	4 601	3.4 %
Average 90 - 140 lbs	552	232.00	180.00	265.00	779	233.00	195.00	270.00	15 247	16 745	-8.9 %
Misc. - All weights	358	121.00	30.00	200.00	428	126.00	20.00	240.00	8 764	10 546	-16.9 %
Female											
Good 90 - 120 lbs	82	307.00	240.00	395.00	113	255.00	220.00	295.00	1 772	2 809	-36.9 %
A2 Grain fed veal calves (hide off)	1 121	246.00	n/a	n/a	1 466	250.00	n/a	n/a	39 235	38 111	2.9 %
596 lbs live / 325-353 lbs hide off											

Source: Les producteurs de bovins du Québec

Ontario Live Auction											
	2017				2016				Volume (YTD)		
	Number	Price ( \$ / 100 lbs)			Number	Price ( \$ / 100 lbs)			head		
	(head)	Average	Min	Max	(head)	Average	Min	Max	2017	2016	% chg
+ 600 lbs	668	119.89	110.28	131.06	603	116.48	108.67	125.79	16 785	15 030	11.7 %
451 - 600 lbs	21	110.75	102.95	125.67	26	109.64	102.36	115.94	1 021	706	44.6 %
301 - 450 lbs	15	142.59	127.73	164.30	21	124.69	109.90	155.95	910	572	59.1 %
126 - 300 lbs	118	188.22	137.28	266.59	95	218.30	157.42	278.31	2 982	3 276	-9.0 %
- 125 lbs	865	229.30	150.71	297.82	866	227.79	176.74	271.18	20 926	23 048	-9.2 %

Source: Beef Farmers of Ontario

Federally Inspected Slaughter									
	Weekly			Year to date			Carcass Weight lbs (Jan-May)		
	2017	2016	% chg	2017	2016	% chg	2017	2016	% chg
Ontario	184	306	-39.9 %	7 265	8 105	-10.4 %	383	374	2.2 %
Quebec	3 659	3 849	-4.9 %	96 730	97 738	-1.0 %	322	320	1 %
<b>Canada</b>	<b>3 843</b>	<b>4 155</b>	<b>-7.5 %</b>	<b>103 995</b>	<b>105 843</b>	<b>-1.7 %</b>	<b>326</b>	<b>323</b>	<b>0.9 %</b>

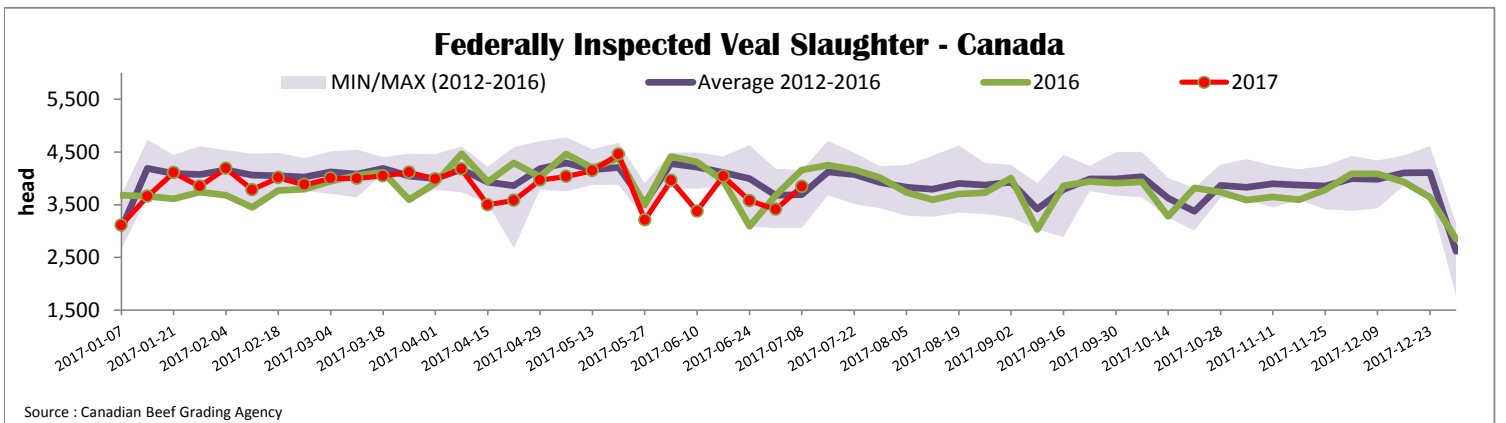
Source: Canadian Beef Grading Agency

Source: CFIA

Exports				Imports			
Total veal (tonnes)	Jan. 1 - May 30, 2017			Total veal (tonnes)	Jan. 1 - July 8, 2017		
	2017	2016	% chg		2017	2016	% chg
United States	1 580	977	61.6 %	United States	980	694	41.2 %
United Arab Emirates	79	103	-23.6 %	Australia	99	233	-57.3 %
Saudi Arabia	22	6	-	Netherlands	30	1	-
Hong Kong	0.6	0	-	New Zealand	19	35	-44.0 %
Others	0.6	1	-56.4 %	Italy	7	0	-
<b>Total</b>	<b>1 682</b>	<b>1 088</b>	<b>54.6 %</b>	Others	0	12	-
				<b>Total</b>	<b>1 135</b>	<b>974</b>	<b>16.5 %</b>

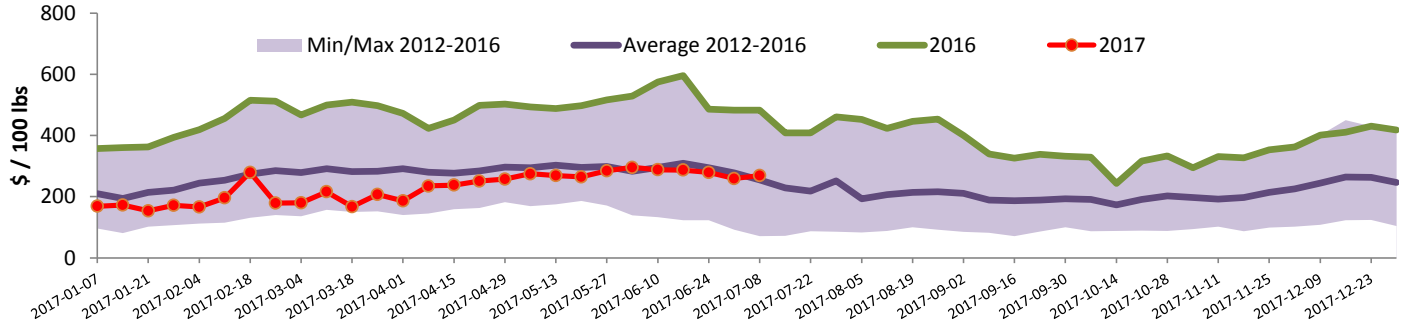
Source: Statistics Canada

Source: CFIA



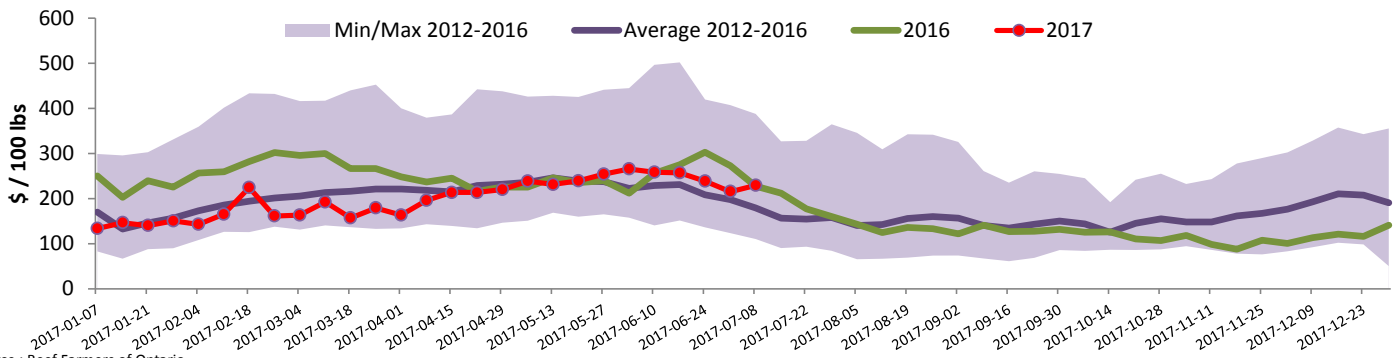


### Quebec Veal Prices - Male: Good 90-120 lbs



Source : Fédération des producteurs de bovins du Québec

### Ontario Veal Prices - 125 lbs and less



Source : Beef Farmers of Ontario

### United States

Week ending July 1, 2017

#### Federally Inspected Slaughter

	Weekly			Year to date		
	2017	2016	% chg	2017	2016	% chg
Milk-fed or nature *						
North East	2 019	2 168	-6.9 %	56 006	60 537	-7.5 %
North Central	2 048	2 067	-0.9 %	46 605	53 948	-13.6 %
<b>Total</b>	<b>4 067</b>	<b>4 235</b>	<b>-4.0 %</b>	<b>102 611</b>	<b>114 485</b>	<b>-10.4 %</b>
Other calves	5 335	4 696	13.6 %	143 638	105 217	36.5 %
<b>Total</b>	<b>9 402</b>	<b>8 931</b>	<b>5.3 %</b>	<b>246 249</b>	<b>219 702</b>	<b>12.1 %</b>
Production						
Calves (million lbs)	1.4	1.5	-6.7 %	35.9	37.0	-3.0 %
Live weight (lbs)	259	279	-7.2 %			
Dressed weight (lbs)	152	165	-7.9 %			

Source : USDA

#### Northeast and North Central U.S. Wholesale Price

\$/100 lbs	Simple avg	Min	Max
307 Rack, Ribeye, Boneless	1 695.00	1 695.00	1 695.00
332 Loin, Trimmed 4x4	617.50	590.00	645.00
1336 Leg slice, Retail	895.00	795.00	995.00
1312 Osso Buco, Fore Shank	830.00	610.00	1 050.00
Shoulder Clod, Chuck	690.00	525.00	855.00

Source : USDA

#### Pennsylvania Vintage Calf Auction

		June 27, 2017		
		\$/ 100 lbs	Min	Max
Number 1	95-123 lbs		167.00	182.00
Number 2	84-115 lbs		165.00	190.00
Number 3	83-108 lbs		162.00	172.00
	73 lbs		135.00	135.00

Source : USDA

#### Northeast and North Central

(Veal Carcass, Hot Basis – Paid to Producer (Hide off, 255-315 lbs))

\* Special fed : milk fed, nature

\$/US / 100 lbs	Weighted Average Price	Min	Max
Non-Packer Owned	306.72	285.00	322.00
Packer Owned	304.52	300.00	307.00

Source : USDA