



## Veal Supply at a Glance - Canada

For week ending May 20, 2017

Quebec Live Auction											
	2017				2016				Volume (YTD)		
	Number (head)	Price ( \$ / 100 lbs)			Number (head)	Price ( \$ / 100 lbs)			head		
Dairy Calves	Average	Min	Max	Average	Min	Max	2017	2016	% chg		
Male											
Good 90 - 120 lbs	760	265.00	240.00	285.00	735	258.00	240.00	280.00	14 358	16 792	-14.5 %
Good 121 - 140 lbs	172	253.00	230.00	280.00	161	255.00	235.00	285.00	3 567	3 351	6.4 %
Average 90 - 140 lbs	484	218.00	160.00	255.00	656	227.00	175.00	260.00	11 194	12 221	-8.4 %
Misc. - All weights	278	128.00	20.00	240.00	408	119.00	20.00	220.00	6 585	8 155	-19.3 %
Female											
Good 90 - 120 lbs	66	275.00	220.00	355.00	95	277.00	225.00	335.00	1 306	1 988	-34.3 %
A2 Grain fed veal calves (hide off)	1 571	245.00	n/a	n/a	1 353	260.10	n/a	n/a	29 805	28 059	6.2 %
596 lbs live / 325-353 lbs hide off											

Source: Les producteurs de bovins du Québec

Ontario Live Auction											
	2017				2016				Volume (YTD)		
	Number (head)	Price ( \$ / 100 lbs)			Number (head)	Price ( \$ / 100 lbs)			head		
	Average	Min	Max	Average	Min	Max	2017	2016	% chg		
+ 600 lbs	567	112.40	103.93	123.41	752	116.05	103.72	133.83	11 718	10 715	9.4 %
451 - 600 lbs	46	109.18	88.55	128.31	24	113.16	95.94	132.90	810	538	50.6 %
301 - 450 lbs	53	129.13	95.55	173.42	31	162.27	129.92	181.50	717	431	66.4 %
126 - 300 lbs	115	173.95	116.41	263.95	124	214.99	157.85	293.59	2 241	2 410	-7.0 %
- 125 lbs	691	239.66	175.04	314.36	816	235.41	179.87	289.45	15 135	17 395	-13.0 %

Source: Beef Farmers of Ontario

Federally Inspected Slaughter									
	Weekly			Year to date			Carcass Weight (lbs -March)		
	2017	2016	% chg	2017	2016	% chg	2017	2016	% chg
Ontario	384	295	30.2 %	5 483	5 963	-8.0 %	388	381	1.9 %
Quebec	4 070	4 089	-0.5 %	73 098	72 798	0.4 %	324	317	2 %
<b>Canada</b>	<b>4 454</b>	<b>4 384</b>	<b>1.6 %</b>	<b>78 581</b>	<b>78 761</b>	<b>-0.2 %</b>	<b>320</b>	<b>321</b>	<b>-0.2 %</b>

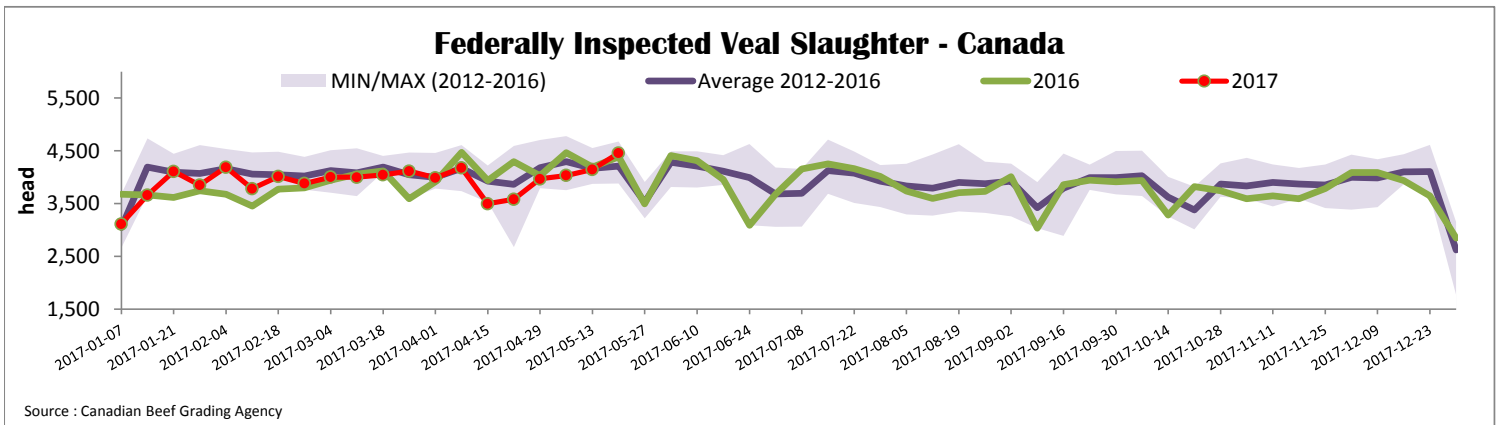
Source : Canadian Beef Grading Agency

Source: CFIA

Exports				Imports			
Total veal (tonnes)	Jan. 1 - March 31, 2017			Total veal (tonnes)	Jan. 1 - May 20, 2017		
	2017	2016	% chg		2017	2016	% chg
United States	997	429	132.2 %	United States	723	513	40.8 %
United Arab Emirates	54	62	-12.7 %	Australia	94	125	-24.6 %
Saudi Arabia	8	0	-	Netherlands	25	0.8	-
Hong Kong	0.6	0	-	New Zealand	19	35	-44.0 %
Others	0.6	0.8	-29.1 %	Chile	0	12	-
<b>Total</b>	<b>1 061</b>	<b>493</b>	<b>115.4 %</b>	<b>Total</b>	<b>862</b>	<b>686</b>	<b>25.6 %</b>

Source: Statistics Canada

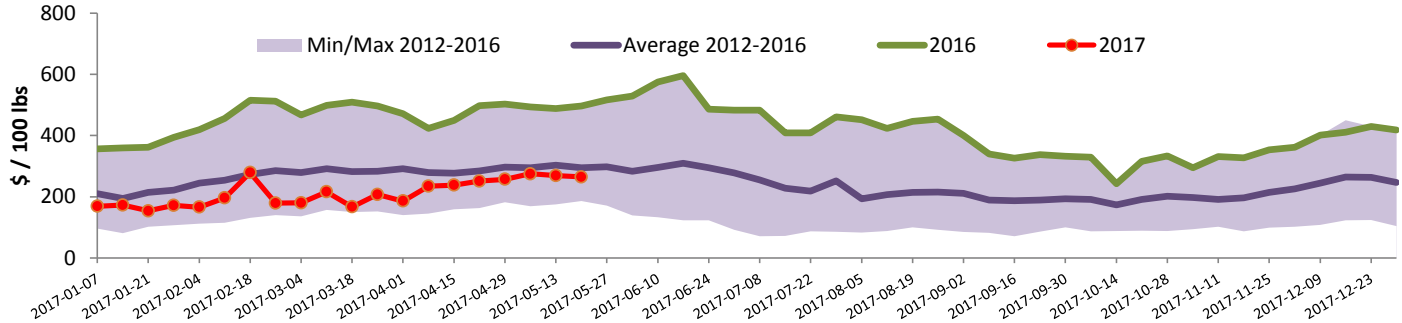
Source: CFIA



Source : Canadian Beef Grading Agency

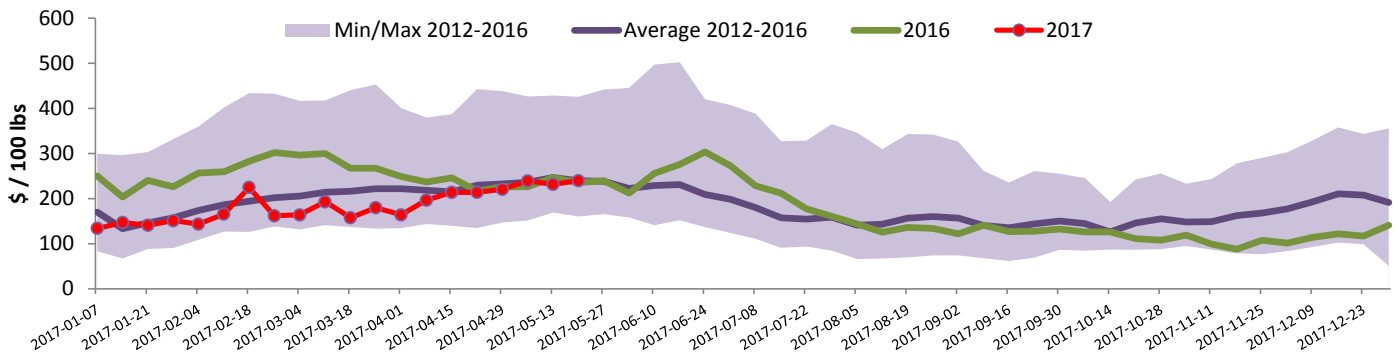


### Quebec Veal Prices - Male: Good 90-120 lbs



Source : Fédération des producteurs de bovins du Québec

### Ontario Veal Prices - 125 lbs and less



Source : Beef Farmers of Ontario

### United States

Week ending May 13, 2017

#### Federally Inspected Slaughter

	Weekly			Year to date		
	2017	2016	% chg	2017	2016	% chg
Milk-fed or nature *						
North East	2 202	2 270	-3.0 %	41 252	46 151	-10.6 %
North Central	1 739	2 005	-13.3 %	33 953	39 894	-14.9 %
<b>Total</b>	<b>3 941</b>	<b>4 275</b>	<b>-7.8 %</b>	<b>75 205</b>	<b>86 045</b>	<b>-12.6 %</b>
Other calves	4 625	3 897	18.7 %	110 015	75 971	44.8 %
<b>Total</b>	<b>8 566</b>	<b>8 172</b>	<b>4.8 %</b>	<b>185 220</b>	<b>162 016</b>	<b>14.3 %</b>
Production						
Calves (million lbs)	1.4	1.4	0.0 %	26.4	27.4	-3.6 %
Live weight (lbs)	274	291	-5.8 %			
Dressed weight (lbs)	161	173	-6.9 %			

Source : USDA

#### Northeast and North Central U.S. Wholesale Price

	\$/100 lbs	Simple avg	Min	Max
307 Rack, Ribeye, Boneless	1 695.00	1 695.00	1 695.00	1 695.00
332 Loin, Trimmed 4x4	590.00	550.00	630.00	
1336 Leg slice, Retail	895.00	795.00	995.00	
1312 Osso Buco, Fore Shank	835.00	620.00	1 050.00	
Shoulder Clod, Chuck	690.00	525.00	855.00	

Source : USDA

#### Pennsylvania Vintage Calf Auction

Graded Holstein Bull Calves May 9, 2017

		\$ / 100 lbs	Min	Max
Number 1	123 lbs		230.00	230.00
	113 lbs		360.00	360.00
	103 lbs		460.00	460.00
	95 lbs		385.00	385.00
	90 lbs		190.00	190.00
Number 2	113 lbs		335.00	335.00
	102-103 lbs		380.00	395.00
	95 lbs		250.00	250.00
	81-90 lbs		180.00	180.00
Number 3	109 lbs		155.00	155.00
	83-95 lbs		170.00	200.00
	73 lbs		165.00	165.00

Source : USDA

#### Northeast and North Central

(Veal Carcass, Hot Basis – Paid to Producer (Hide off, 255-315 lbs))

\* Special fed : milk fed, nature

\$US / 100 lbs	Weighted Average Price	Min	Max
Non-Packer Owned	305.12	285.00	317.00
Packer Owned	300.00	300.00	300.00

Source : USDA