



## Veal Supply at a Glance - Canada

For week ending October 22, 2016

Quebec Live Auction											
	2016				2015				Volume (YTD)		
	Number (head)	Price ( \$ / 100 lbs)			Number (head)	Price ( \$ / 100 lbs)			head		
Dairy Calves		Average	Min	Max		Average	Min	Max	2016	2015	% chg
Male											
Good 90 -120 lbs	563	135.00	120.00	150.00	1 018	316.00	250.00	355.00	33 604	41 908	-19.8 %
Good 121 - 140 lbs	102	135.00	120.00	155.00	127	305.00	240.00	390.00	6 770	7 639	-11.4 %
Average 90 - 140 lbs	687	112.00	80.00	140.00	470	211.00	100.00	290.00	27 588	21 958	25.6 %
Misc. - All weights	693	55.00	20.00	125.00	373	59.00	15.00	140.00	18 812	16 283	15.5 %
Female											
Good 90 -120 lbs	79	180.00	120.00	265.00	136	303.00	220.00	410.00	4 218	5 070	-16.8 %
A2 Grain fed veal calves (hide off)	1 230	251.50	n/a	n/a	1 452	337.60	n/a	n/a	58 300	54 491	7.0 %
596 lbs live - (325-353 lbs hide off)											

Source: Les producteurs de bovins du Québec

Ontario Live Auction											
	2016				2015				Volume (YTD)		
	Number (head)	Price ( \$ / 100 lbs)			Number (head)	Price ( \$ / 100 lbs)			head		
		Average	Min	Max		Average	Min	Max	2016	2015	% chg
+ 600 lbs	614	121.82	104.56	135.64	390	157.09	136.84	177.68	23 775	23 869	-0.4 %
451 - 600 lbs	39	118.75	101.83	135.37	14	142.98	119.02	165.97	1 202	1 293	-7.0 %
301 - 450 lbs	67	146.27	87.01	193.44	26	234.65	158.32	293.64	1 072	1 058	1.3 %
126 - 300 lbs	127	119.48	88.35	170.56	129	237.78	157.32	318.12	5 055	5 326	-5.1 %
- 125 lbs	825	110.76	76.75	144.41	891	241.99	140.87	318.19	37 159	41 333	-10.1 %

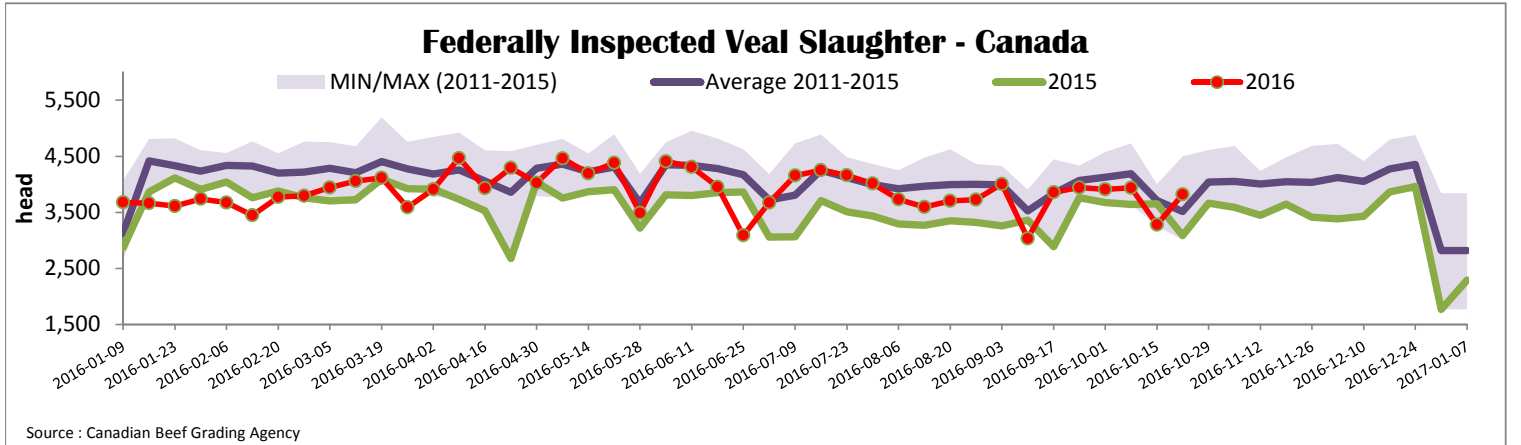
Source: Beef Farmers of Ontario

Federally Inspected Slaughter									
	Weekly			Year to date			Carcass Weight (lbs - Jan-Aug.)		
	2016	2015	% chg	2016	2015	% chg	2016	2015	% chg
Ontario	328	232	41.4 %	12 153	12 375	-1.8 %	375	363	3.3 %
Quebec / Atlantic	3 491	2 852	22.4 %	150 662	138 564	8.7 %	319	327	-2.6 %
<b>Canada</b>	<b>3 819</b>	<b>3 084</b>	<b>23.8 %</b>	<b>162 815</b>	<b>150 939</b>	<b>7.9 %</b>	<b>323</b>	<b>330</b>	<b>-2.3 %</b>

Source: Canadian Beef Grading Agency      Source: CFIA

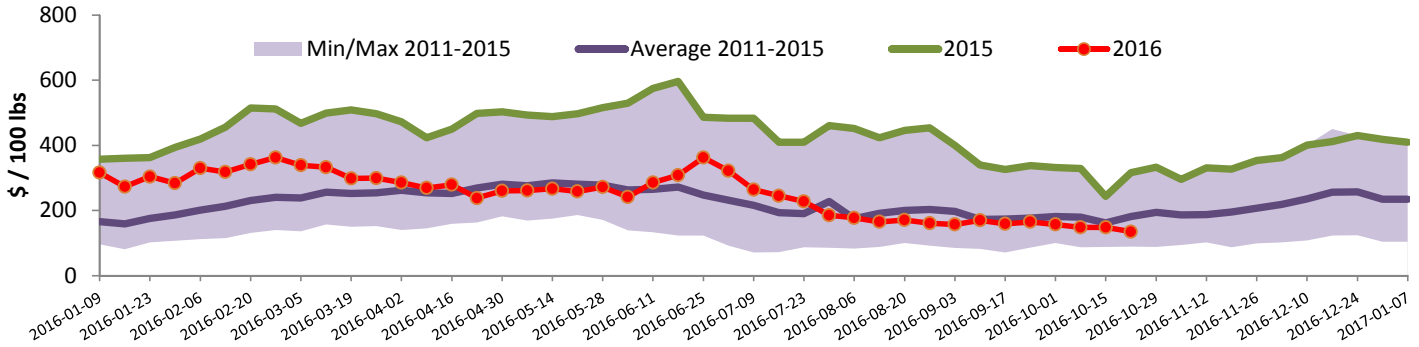
Exports				Imports					
Total veal (tonnes)	Jan. 1 - Aug. 31, 2016	2016	2015	% chg	Total veal (tonnes)	Jan. 1 - Oct. 22, 2016	2016	2015	% chg
United States		2 121	1 396	52.0 %	United States		1 059	739	43.3 %
United Arab Emirates		137	106	29.3 %	New Zealand		1 042	592	76.1 %
Saudi Arabia		6	0	-	Australia		401	1 163	-65.5 %
Others		1	2	-21.4 %	Others		51	0	-
<b>Total</b>		<b>2 265</b>	<b>1 504</b>	<b>50.7 %</b>	<b>Total</b>		<b>2 552</b>	<b>2 493</b>	<b>2.4 %</b>
Live calves (head)	Jan. 1 - Aug. 31	1 595	3 265	-51.1 %					

Source: Statistics Canada      Source: CFIA



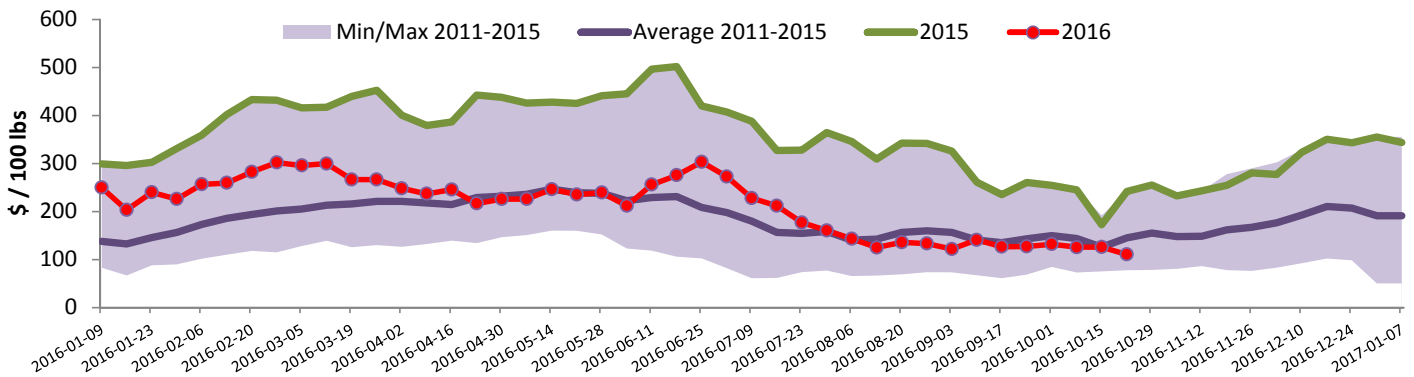


### Quebec Veal Prices - Male: Good 90-120 lbs



Source : Fédération des producteurs de bovins du Québec

### Ontario Veal Prices - 125 lbs and less



Source : Beef Farmers of Ontario

## United States

Week ending October 15, 2016

Federally Inspected Slaughter				Northeast and North Central U.S. Wholesale Price						
	Weekly			Year to date						
	2016	2015	% chg	2016	2015	% chg	\$/100 lbs	Simple avg	Min	Max
Milk-fed or nature *							307 Rack, Ribeye, Boneless	1 750.00	1 750.00	1 750.00
North East	2 426	2 792	-13.1 %	92 752	111 758	-17.0 %	332 Loin, Trimmed 4x4	622.50	575.00	670.00
North Central	1 852	2 199	-15.8 %	83 727	94 246	-11.2 %	1336 Leg slice, Retail	972.50	795.00	1 150.00
<b>Total</b>	<b>4 278</b>	<b>4 991</b>	<b>-14.3 %</b>	<b>176 479</b>	<b>206 004</b>	<b>-14.3 %</b>	1312 Osso Buco, Fore Shank	862.50	675.00	1 050.00
Other calves	7 417	4 404	68.4 %	182 350	136 281	33.8 %	Shoulder Clod, Chuck	637.50	420.00	855.00
<b>Total</b>	<b>11 695</b>	<b>9 395</b>	<b>24.5 %</b>	<b>358 829</b>	<b>342 285</b>	<b>4.8 %</b>				
Production							Source : USDA			
Calves (million lbs)	1.5	1.7	-11.8 %	56.8	63.0	-9.8 %	Source : USDA			
Live weight (lbs)	223	313	-28.8 %				Source : USDA			
Dressed weight (lbs)	130	186	-30.1 %				Source : USDA			
<b>Northeast and North Central</b>							<b>Pennsylvania Vintage Calf Auction</b>			
(Veal Carcass, Hot Basis – Paid to Producer (Hide off, 255-315 lbs))							Graded Holstein Bull Calves			
* Special fed : milk fed, nature							October 11, 2016			
\$/US / 100 lbs							\$/ 100 lbs			
Weighted Average Price							Min			
Min							Max			
Max										
Non-Packer Owned							Number 1 95 - 120 lbs			
Packer Owned							Number 2 95 - 112 lbs			
							84 - 90 lbs			
							Number 3 83 - 108 lbs			
							65 - 74 lbs			

Source : USDA

Source : USDA