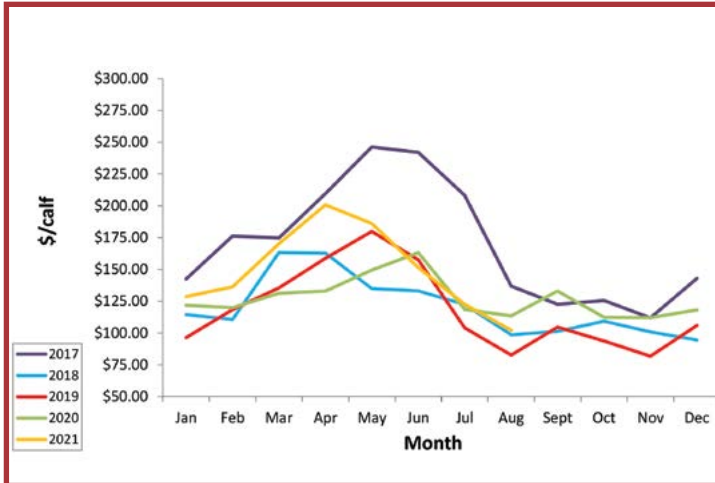




Veal Market Information

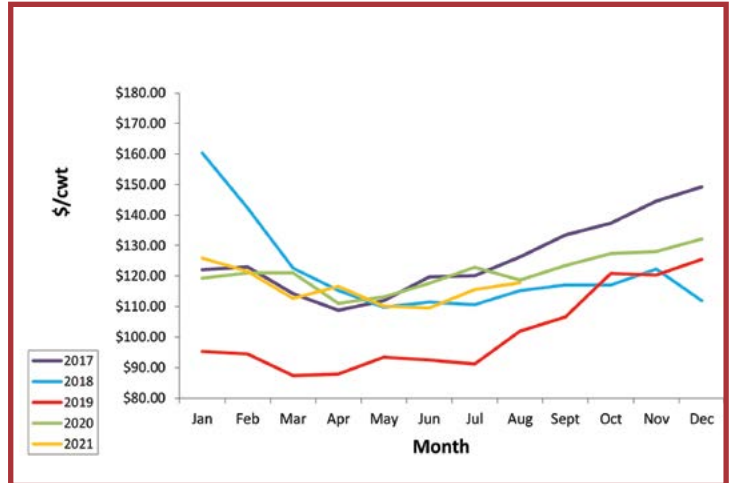
This information is collected from various sources and disseminated by Veal Farmers of Ontario.

Bob Calf Pricing



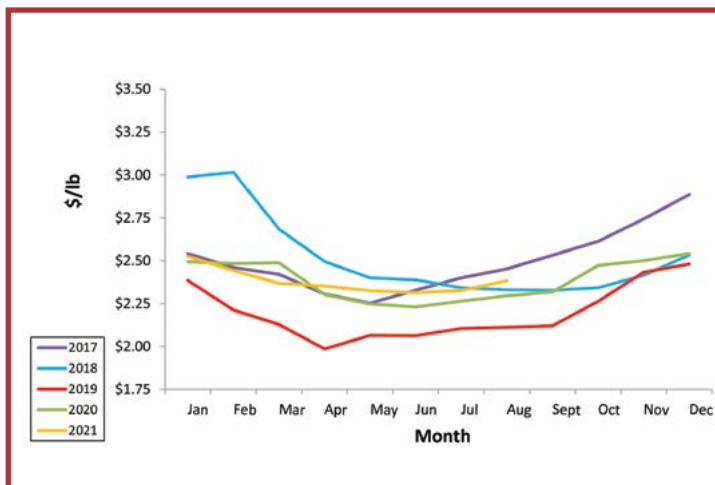
This price range is collected and tabulated from participating sale barns throughout Ontario based on average pricing. This information is used to follow trends.

Sale Barn Veal Pricing



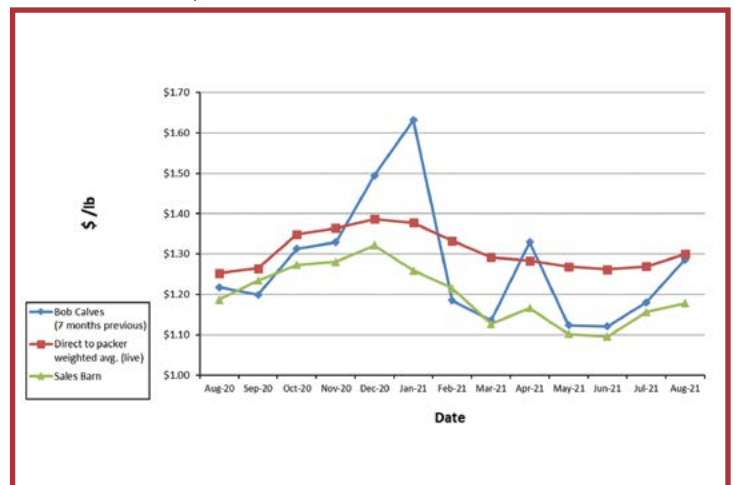
This price range is collected and tabulated from participating sale barns throughout Ontario based on average pricing. This information is used to follow trends.

Rail Grade Veal Pricing



This information is collected from producer contributions on a weekly basis. Once the numbers are collected a weighted average is calculated. The weighted average gives a more realistic price of what is happening in the market. This information is used to follow trends.

Finished price compared to bob calf prices (Seven months previous)



This graph is used to compare the finished price from both the sale barn and rail grade pricing to the bob calf prices seven months prior. This information could help when deciding on the purchase prices of calves and what market they will be shipped in. This information gives a quick glance at both bob calf pricing and finished veal pricing.