



# Veal Supply at a Glance - Canada

For week ending September 29, 2012

Quebec Live Auction											
Dairy Calves	2012				2011				Volume (YTD)		
	Number (head)	Price ( \$ / 100 lbs)			Number (head)	Price ( \$ / 100 lbs)			head		
Male	Average	Min	Max	Average	Min	Max	2012	2011	% chg		
Good 90 -120 lbs	1035	108.00	90.00	125.00	866	101.00	87.00	115.00	32 724	33 014	-0.9 %
Good 121 - 140 lbs	153	105.00	90.00	120.00	180	111.00	92.00	127.00	6 863	7 213	-4.9 %
Average 90 - 140 lbs	328	80.00	50.00	105.00	364	75.00	50.00	90.00	14 449	13 048	10.7 %
Misc. - All weights	298	30.00	14.00	60.00	438	28.00	10.00	50.00	12 306	9 888	24.5 %
<b>Female</b>											
Good 90 -120 lbs	59	100.00	57.00	125.00	90	145.00	80.00	192.00	2 938	3 565	-17.6 %
A2 Grain fed veal calves (hide off)	1325	213.70	n/a	n/a	1252	246.90	n/a	n/a	57 515	59 365	-3.1 %
(596 ls live - 325-353 lbs hide off)											

Source: Fédération des producteurs de bovins du Québec

Ontario Live Auction											
	2012				2011				Volume (YTD)		
	Number (head)	Price ( \$ / 100 lbs)			Number (head)	Price ( \$ / 100 lbs)			head		
	Average	Min	Max	Average	Min	Max	2012	2011	% chg		
+ 600 lbs	569	110.11	99.33	124.04	504	120.91	107.54	130.27	26 767	20 711	29.2 %
451 - 600 lbs	65	95.57	80.31	108.64	81	113.65	96.64	126.46	1 937	1 835	5.6 %
301 - 450 lbs	31	123.39	93.71	152.68	37	115.05	92.85	129.12	1 174	966	21.5 %
126 - 300 lbs	129	85.12	65.43	122.97	137	92.74	66.48	121.53	5 268	5 011	5.1 %
- 125 lbs	848	86.13	55.67	106.93	813	84.82	57.59	107.15	32 833	29 516	11.2 %

3

Federally Inspected Slaughter									
	Weekly			Year to date			Carcass Weight (lbs - Jan.-June)		
	2012	2011	% chg	2012	2011	% chg	2012	2011	% chg
Ontario	619	651	-4.9 %	24 261	27 361	-11.3 %	358.0	355.2	0.8 %
Quebec / Atlantic	3 876	3 925	-1.2 %	146 835	149 403	-1.7 %	302.4	304.1	-0.6 %
<b>Canada</b>	<b>4 495</b>	<b>4 576</b>	<b>-1.8 %</b>	<b>171 096</b>	<b>176 764</b>	<b>-3.2 %</b>	<b>309.9</b>	<b>313.4</b>	<b>-1.1 %</b>

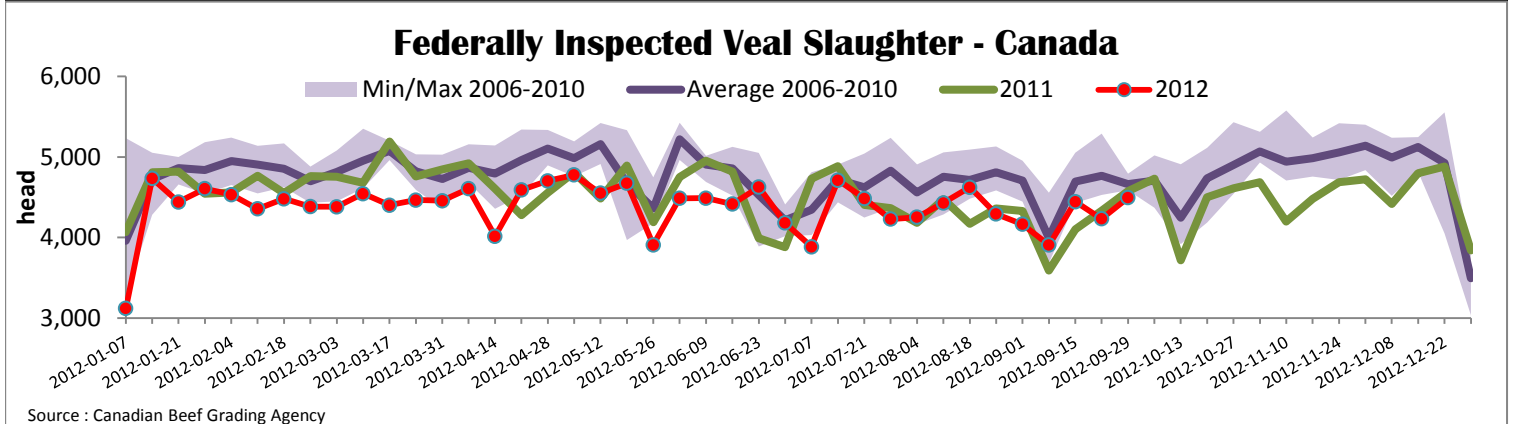
Source : Canadian Beef Grading Agency

Source: CFIA

Exports					Imports				
Total veal (tonnes)	Jan. 1st to July 31, 2012				Total veal (tonnes)	Jan. 1st to Sept. 29, 2012			
	2012	2011	% chg			2012	2011	% chg	
United States	1 643	1 578	4.1 %		United States	967	829	16.6 %	
United Arab Emirates	55	33	66.7 %		Australia	755	601	25.6 %	
Japan	23	26	-11.5 %		New Zealand	255	642	-60.3 %	
Others	49	7			<b>Total</b>	<b>1 977</b>	<b>2 072</b>	<b>-4.6 %</b>	
<b>Total</b>	<b>1 770</b>	<b>1 644</b>	<b>7.7 %</b>						
Live calves (head)	Jan. 1st to July 31				Live calves (head)	Jan. 1st to July 31, 2012			
	1667	43				27 384	32 560		

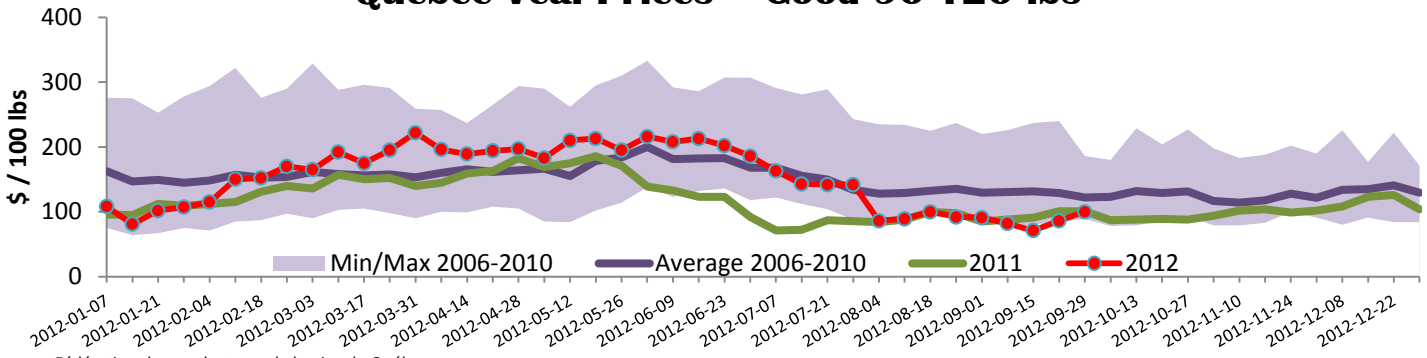
Source: Statistics Canada

Source: CFIA



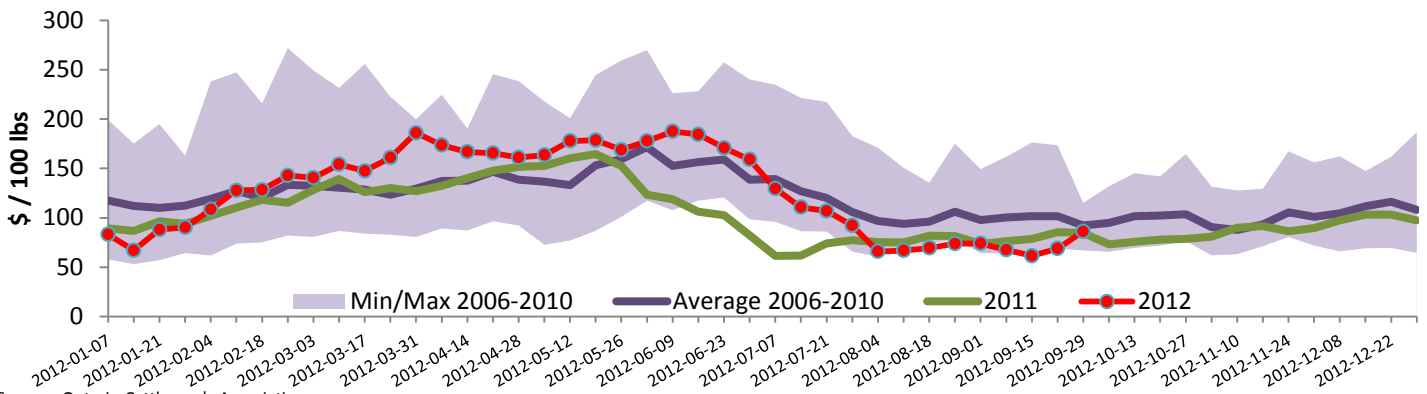


### Quebec Veal Prices - Good 90-120 lbs



Source : Fédération des producteurs de bovins du Québec

### Ontario Veal Prices - less than 125 lbs Veal



Source : Ontario Cattlemen's Association

## United States

Week ending September 29, 2012

Federally Inspected Slaughter						U.S. Wholesale Price				
	Weekly			Year to date			\$/100 lbs	Simple avg	Min	Max
	2012	2011	% chg	2012	2011	% chg				
Milk-fed or nature *							307 Rack, Ribeye, Boneless	2 147.50	1 900.00	2 395.00
North East	3 119	3 157	-1.2 %	116 262	126 846	-8.3 %	332 Loin, Trimmed 4x4	635.00	565.00	685.00
North Central	2 491	3 785	-34.2 %	112 607	144 886	-22.3 %	1336 Leg slice, Retail	877.50	725.00	1 050.00
<b>Total</b>	<b>5 610</b>	<b>6 942</b>	<b>-19.2 %</b>	<b>228 869</b>	<b>271 732</b>	<b>-15.8 %</b>	1312 Osso Buco, Foreshank	905.00	785.00	1 025.00
Other calves	9 390	10 439	-10.0 %	321 751	351 877	-8.6 %	Shoulder Clod, Chuck	560.00	495.00	625.00
<b>Total</b>	<b>15 000</b>	<b>17 381</b>	<b>-13.7 %</b>	<b>550 620</b>	<b>623 609</b>	<b>-11.7 %</b>				
						Source : USDA				
Production						Pennsylvania Vintage Calf Auction				
Calves (millions lbs)	2.2	2.4	-8.3 %	85.8	94.8	-9.5 %	Graded Holstein Bull Calves		September 18, 2012	
Live weight (lbs)	243	244	-0.4 %					\$ / 100 lbs	Min	Max
Dressed weight (lbs)	143	144	-0.7 %				Number 1	122 lbs	110.00	
								101 - 113 lbs	123.00	124.00
								95 lbs	110.00	
								85 - 90 lbs	95.00	97.00
							Number 2	112 - 113 lbs	110.00	119.00
								95 lbs	105.00	107.00
								84 - 90 lbs	80.00	90.00
								83 lbs	72.00	
								74 lbs	40.00	
							Number 3	110 lbs	62.00	
								94 - 95 lbs	70.00	77.00
								83 - 84 lbs	50.00	60.00
								74 lbs	25.00	