



# Veal Supply at a Glance - Canada

For week ending November 24, 2012

Quebec Live Auction											
Dairy Calves	2012				2011				Volume (YTD)		
	Number (head)	Price (\$ / 100 lbs)			Number (head)	Price (\$ / 100 lbs)			head		% chg
Male		Average	Min	Max		Average	Min	Max	2012	2011	% chg
Good 90 -120 lbs	828	99.00	85.00	112.00	941	99.00	90.00	115.00	39 687	40 188	-1.2 %
Good 121 - 140 lbs	183	102.00	90.00	112.00	185	103.00	90.00	115.00	8 235	8 584	-4.1 %
Average 90 - 140 lbs	428	77.00	50.00	95.00	216	73.00	45.00	95.00	17 542	15 526	13.0 %
Misc. - All weights	454	29.00	11.00	50.00	240	26.00	10.00	70.00	15 504	12 243	26.6 %
Female											
Good 90 -120 lbs	56	89.00	65.00	120.00	57	93.00	80.00	115.00	3 469	4 137	-16.1 %
A2 Grain fed veal calves (hide off)	1261	208.40	n/a	n/a	1436	230.90	n/a	n/a	68 201	70 485	-3.2 %
(596 ls live - 325-353 lbs hide off)											

Source: Fédération des producteurs de bovins du Québec

Ontario Live Auction											
	2012				2011				Volume (YTD)		
	Number (head)	Price (\$ / 100 lbs)			Number (head)	Price (\$ / 100 lbs)			head		% chg
+ 600 lbs	490	105.08	92.64	113.22	388	123.63	109.45	135.24	25 730	24 169	6.5 %
451 - 600 lbs	57	94.75	79.85	104.54	55	113.26	100.83	126.54	2 341	2 341	0.0 %
301 - 450 lbs	61	111.47	73.36	132.00	54	127.69	77.88	168.97	1 573	1 357	15.9 %
126 - 300 lbs	141	74.51	51.56	100.01	150	90.20	66.75	106.58	6 333	6 127	3.4 %
- 125 lbs	811	76.57	50.34	97.98	753	86.37	70.06	99.93	39 346	35 988	9.3 %

Federally Inspected Slaughter									
	Weekly			Year to date			Carcass Weight (lbs - Jan.-June)		
	2012	2011	% chg	2012	2011	% chg	2012	2011	% chg
Ontario	612	520	17.7 %	28 717	31 837	-9.8 %	358.0	355.2	0.8 %
Quebec / Atlantic	3 277	4 169	-21.4 %	174 612	180 543	-3.3 %	302.4	304.1	-0.6 %
<b>Canada</b>	<b>3 889</b>	<b>4 689</b>	<b>-17.1 %</b>	<b>203 329</b>	<b>212 380</b>	<b>-4.3 %</b>	<b>309.9</b>	<b>313.4</b>	<b>-1.1 %</b>

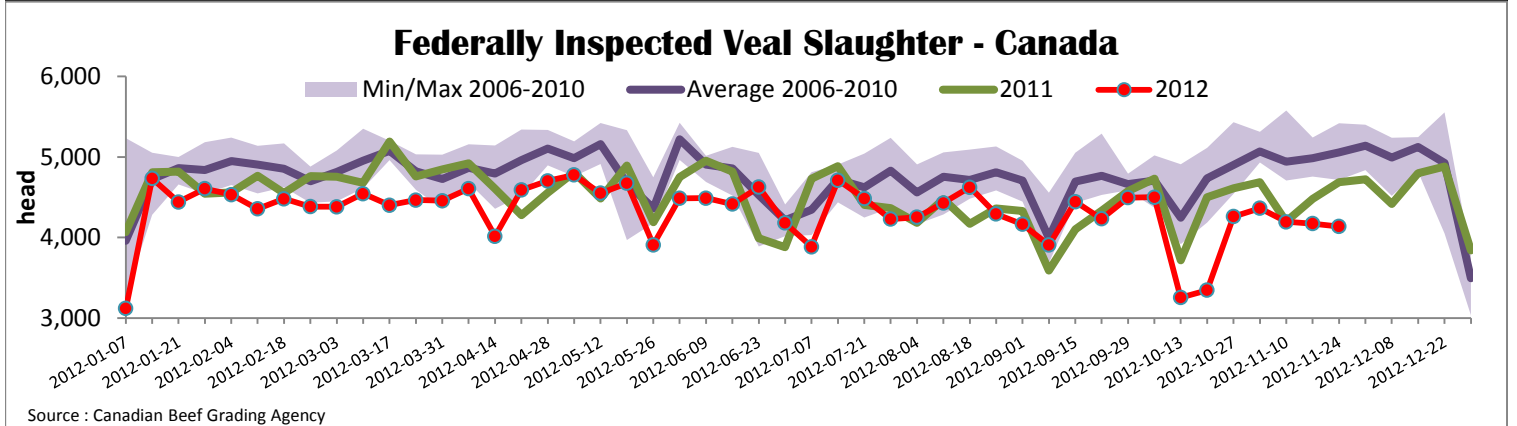
Source : Canadian Beef Grading Agency

Source: CFIA

Exports					Imports				
Total veal (tonnes)	Jan. 1st to Sept. 30, 2012				Total veal (tonnes)	Jan. 1st to Nov. 24, 2012			
	2012	2011	% chg			2012	2011	% chg	
United States	2 016	1 971	2.3 %		United States	1 168	1 063	9.9 %	
United Arab Emirates	71	45	57.8 %		Australia	872	692	26.0 %	
Japan	26	27	-3.7 %		New Zealand	874	751	16.4 %	
Others	63	9			<b>Total</b>	<b>2 914</b>	<b>2 506</b>	<b>16.3 %</b>	
<b>Total</b>	<b>2 176</b>	<b>2 052</b>	<b>6.0 %</b>						
Live calves (head)	Jan. 1st to Sept. 30				Live calves (head)	Jan. 1st to Sept. 30, 2012			
	1761	81				34 486	40 850	2011 Total	

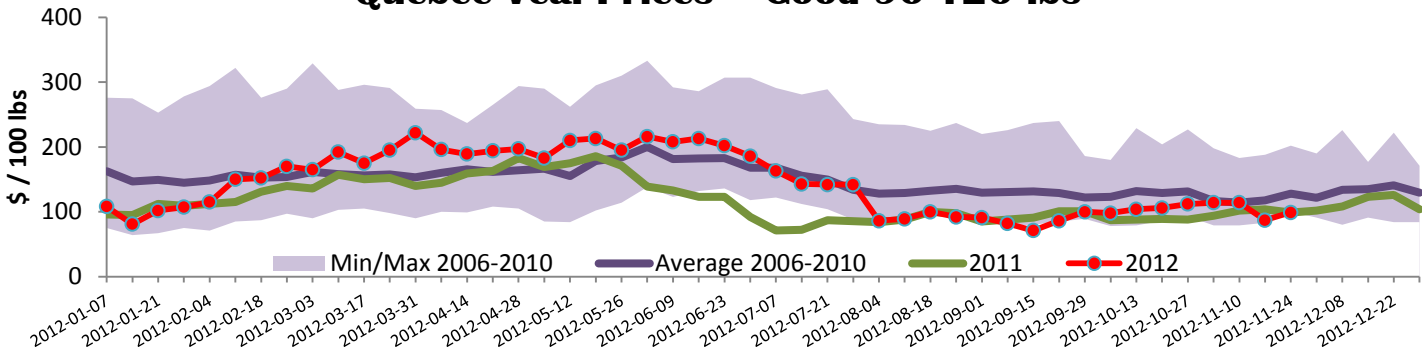
Source: Statistics Canada

Source: CFIA



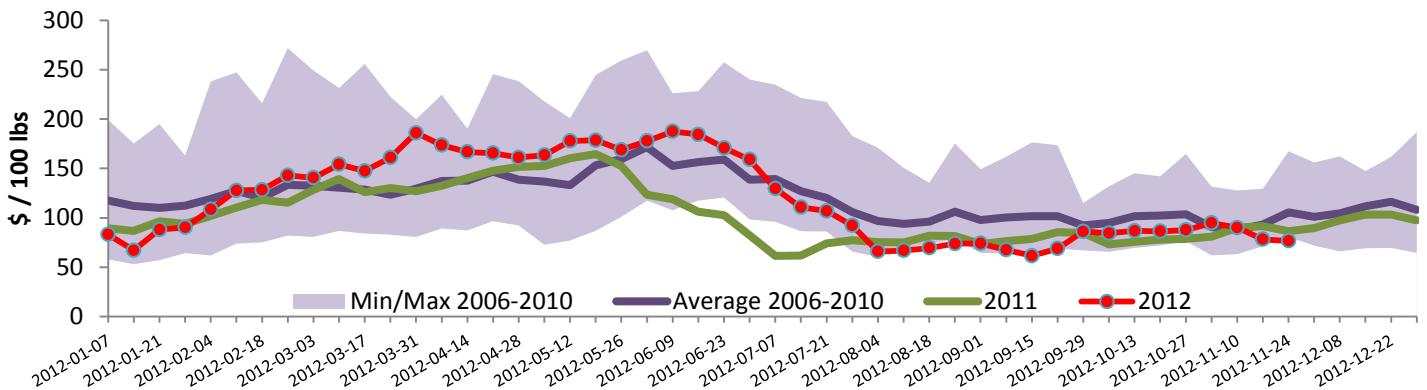


### Quebec Veal Prices - Good 90-120 lbs



Source : Fédération des producteurs de bovins du Québec

### Ontario Veal Prices - less than 125 lbs Veal



Source : Ontario Cattlemen's Association

## United States

Week ending November 24, 2012

Federally Inspected Slaughter				U.S. Wholesale Price							
	Weekly			Year to date			\$/100 lbs	Simple avg	Min	Max	
Milk-fed or nature *	2012	2011	% chg	2012	2011	% chg	307 Rack, Ribeye, Boneless	2 377.50	2 150.00	2 605.00	
North East	3 057	1 998	53.0 %	146 823	152 314	-3.6 %	332 Loin, Trimmed 4x4	607.00	529.00	685.00	
North Central	2 295	3 366	-31.8 %	135 516	172 272	-21.3 %	1336 Leg slice, Retail	910.00	725.00	1 095.00	
<b>Total</b>	<b>5 352</b>	<b>5 364</b>	<b>-0.2 %</b>	<b>282 339</b>	<b>324 586</b>	<b>-13.0 %</b>	1312 Osso Buco, Foreshank	935.00	795.00	1 075.00	
Other calves	7 648	9 310	-17.9 %	391 528	431 443	-9.3 %	Shoulder Clod, Chuck	570.00	495.00	645.00	
<b>Total</b>	<b>13 000</b>	<b>14 674</b>	<b>-11.4 %</b>	<b>673 867</b>	<b>756 029</b>	<b>-10.9 %</b>					
							Source : USDA				
Production							<b>Pennsylvania Vintage Calf Auction</b>				
Calves (millions lbs)	1.8	2.2	-18.2 %	102.5	114.2	-10.2 %	Graded Holstein Bull Calves		November 13, 2012		
Live weight (lbs)	243	257	-5.4 %								
Dressed weight (lbs)	142	152	-6.6 %								
								\$ / 100 lbs	Min	Max	
(Veal Carcass, Special fed * (Hide off, 255-315 lbs))				\$ / 100 lbs	Average	Min	Max	Number 1	121 lbs	107.00	
					354.46	325.00	380.00		112 lbs	115.00	117.00
* Special fed : milk fed, nature									95 - 103 lbs	122.00	125.00
								Number 2	95 - 114 lbs	110.00	117.00
									84 lbs	70.00	
								Number 3	95 - 109 lbs	80.00	87.00
									93 lbs	65.00	75.00
									82 - 83 lbs	50.00	53.00
									74 lbs	30.00	



Agriculture and  
Agri-Food Canada

Agriculture et  
Agroalimentaire Canada

Canada





Agriculture and  
Agri-Food Canada

Agriculture et  
Agroalimentaire Canada

Canada

