



# Veal Supply at a Glance - Canada

For week ending December 22, 2012

Quebec Live Auction											
Dairy Calves	2012				2011				Volume (YTD)		
	Number (head)	Price ( \$ / 100 lbs)			Number (head)	Price ( \$ / 100 lbs)			head		
Male	Average	Min	Max	Average	Min	Max	2012	2011	% chg		
Good 90 -120 lbs	1005	124.00	90.00	145.00	989	126.00	105.00	145.00	43 589	44 078	-1.1 %
Good 121 - 140 lbs	169	124.00	90.00	145.00	144	128.00	110.00	150.00	8 998	9 222	-2.4 %
Average 90 - 140 lbs	572	83.00	50.00	118.00	349	89.00	50.00	120.00	19 146	16 740	14.4 %
Misc. - All weights	297	24.00	10.00	50.00	286	31.00	13.00	60.00	16 963	13 180	28.7 %
<b>Female</b>											
Good 90 -120 lbs	79	115.00	100.00	137.00	58	114.00	100.00	135.00	3 771	4 419	-14.7 %
A2 Grain fed veal calves (hide off)	1458	205.20	n/a	n/a	1245	229.90	n/a	n/a	73 846	75 833	-2.6 %
(596 ls live - 325-353 lbs hide off)											

Source: Fédération des producteurs de bovins du Québec

Ontario Live Auction											
	2012				2011				Volume (YTD)		
	Number (head)	Price ( \$ / 100 lbs)			Number (head)	Price ( \$ / 100 lbs)			head		
	Average	Min	Max	Average	Min	Max	2012	2011	% chg		
+ 600 lbs	596	105.32	96.31	118.92	391	126.24	116.01	136.59	27 970	25 981	7.7 %
451 - 600 lbs	64	89.48	74.27	103.08	86	105.32	93.00	118.42	2 594	2 660	-2.5 %
301 - 450 lbs	39	85.44	64.59	110.64	48	104.71	88.40	118.75	1 768	1 556	13.6 %
126 - 300 lbs	95	86.05	61.29	118.65	70	97.93	73.74	121.07	6 823	6 659	2.5 %
- 125 lbs	886	98.84	62.60	122.38	852	103.38	73.06	123.59	42 828	39 412	8.7 %

Federally Inspected Slaughter									
	Weekly			Year to date			Carcass Weight (lbs - Jan.-Oct.)		
	2012	2011	% chg	2012	2011	% chg	2012	2011	% chg
Ontario	610	550	10.9 %	31 033	34 084	-9.0 %	354	359	-1.4 %
Quebec / Atlantic	3 854	4 330	-11.0 %	189 959	197 112	-3.6 %	301	302	-0.3 %
<b>Canada</b>	<b>4 464</b>	<b>4 880</b>	<b>-8.5 %</b>	<b>220 992</b>	<b>231 196</b>	<b>-4.4 %</b>	<b>307</b>	<b>311</b>	<b>-1.3 %</b>

Source : Canadian Beef Grading Agency

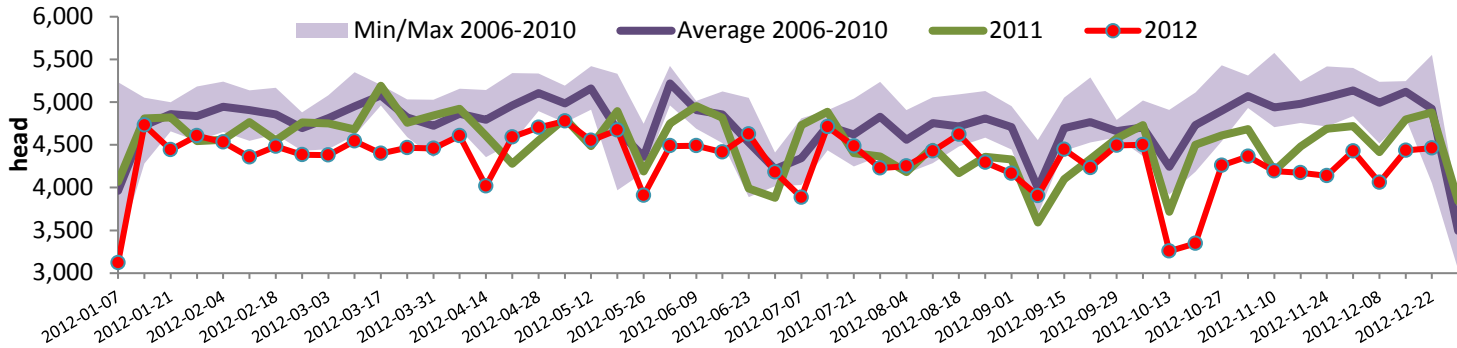
Source: CFIA

Exports					Imports				
Total veal (tonnes)	Jan. 1st to Oct. 31, 2012				Total veal (tonnes)	Jan. 1st to Dec. 22, 2012			
	2012	2011	% chg			2012	2011	% chg	
United States	2 120	2 212	-4.2 %		United States	1 237	1 158	6.8 %	
United Arab Emirates	81	56	44.6 %		Australia	920	748	23.0 %	
Japan	27	27	0.0 %		New Zealand	894	801	11.6 %	
Others	70	13			<b>Total</b>	<b>3 051</b>	<b>2 707</b>	<b>12.7 %</b>	
<b>Total</b>	<b>2 298</b>	<b>2 308</b>	<b>-0.4 %</b>						
Live calves (head)	Jan. 1st to Oct. 31				Live calves (head)	Jan. 1st to Oct. 31, 2012			
	1896	84				34 701	45 591	2011 Total	

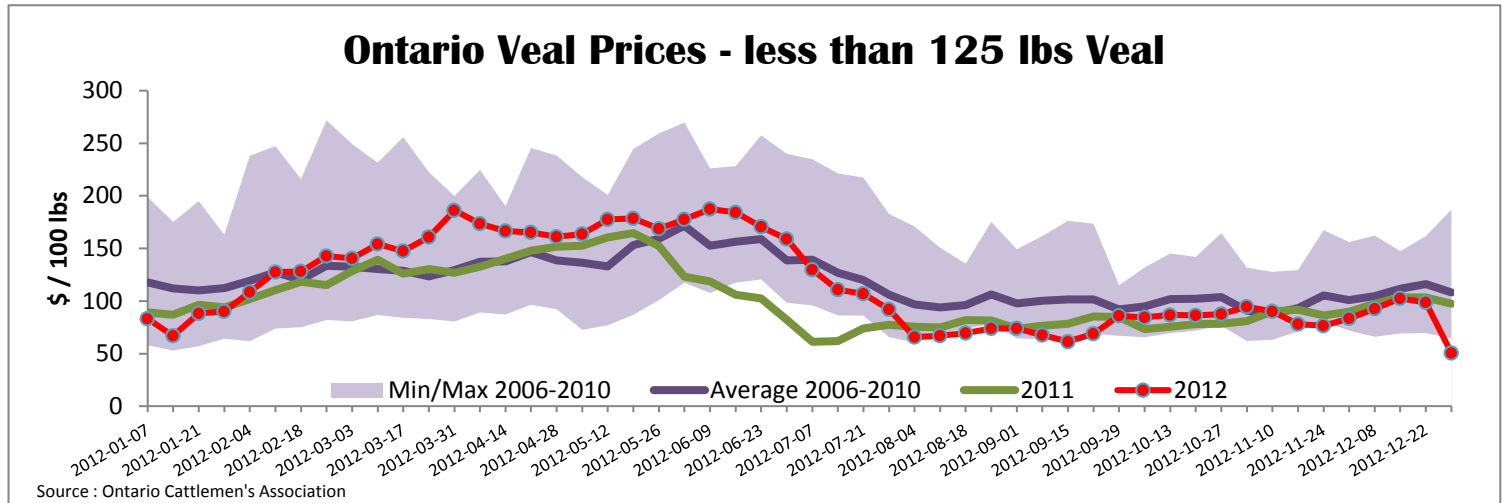
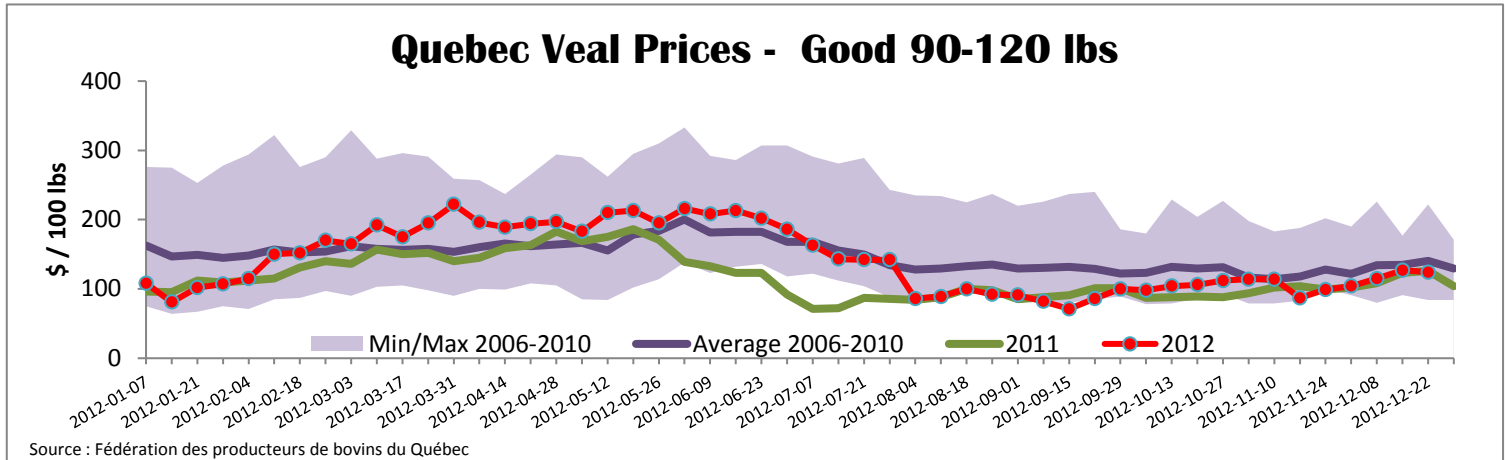
Source: Statistics Canada

Source: CFIA

## Federally Inspected Veal Slaughter - Canada



Source : Canadian Beef Grading Agency



<b>United States</b>										
Week ending December 22, 2012										
Federally Inspected Slaughter					U.S. Wholesale Price					
	Weekly			Year to date			\$/100 lbs			
	2012	2011	% chg	2012	2011	% chg	Simple avg	Min	Max	
Milk-fed or nature *							307 Rack, Ribeye, Boneless	2 377.50	2 150.00	2 605.00
North East	1 822	3 250	-43.9 %	158 001	165 745	-4.7 %	332 Loin, Trimmed 4x4	597.50	545.00	650.00
North Central	3 160	3 796	-16.8 %	144 051	186 822	-22.9 %	1336 Leg slice, Retail	910.00	725.00	1 095.00
<b>Total</b>	<b>4 982</b>	<b>7 046</b>	<b>-29.3 %</b>	<b>302 052</b>	<b>352 567</b>	<b>-14.3 %</b>	1312 Osso Buco, Fore Shank	935.00	795.00	1 075.00
Other calves	11 700	10 157	15.2 %	439 666	471 687	-6.8 %	Shoulder Clod, Chuck	570.00	495.00	645.00
<b>Total</b>	<b>16 682</b>	<b>17 203</b>	<b>-3.0 %</b>	<b>741 718</b>	<b>824 254</b>	<b>-10.0 %</b>				
Source : USDA										
Production							<b>Pennsylvania Vintage Calf Auction</b>			
Calves (millions lbs)	2.1	2.5	-16.0 %	111.9	124.1	-9.8 %	Graded Holstein Bull Calves			
Live weight (lbs)	242	250	-3.2 %				December 18, 2012			
Dressed weight (lbs)	143	148	-3.4 %				\$/ 100 lbs			
								Min	Max	
(Veal Carcass, Special fed * (Hide off, 255-315 lbs))				\$ / 100 lbs	Average	Min	Max			
					347.61	325.00	380.00			
* Special fed : milk fed, nature							Number 1	121 lbs	97.00	
								111 - 113 lbs	112.00	118.00
								95 - 103 lbs	130.00	132.00
								90 lbs	102.00	
								85 lbs	87.00	
							Number 2	95 - 113 lbs	122.00	134.00
								90 lbs	97.00	
								83 lbs	70.00	
							Number 3	93 - 110 lbs	72.00	80.00
								83 - 84 lbs	55.00	
								74 lbs	35.00	