



Veal Supply at a Glance - Canada

For week ending March 16, 2013

Quebec Live Auction											
	2013				2012				Volume (YTD)		
	Number (head)	Price (\$ / 100 lbs)			Number (head)	Price (\$ / 100 lbs)			head		
Dairy Calves		Average	Min	Max		Average	Min	Max	2013	2012	% chg
Male											
Good 90 -120 lbs	894	169.00	140.00	190.00	894	175.00	160.00	192.00	9 717	10 074	-3.5 %
Good 121 - 140 lbs	195	171.00	138.00	190.00	173	173.00	152.00	195.00	2 523	2 130	18.5 %
Average 90 - 140 lbs	357	133.00	95.00	170.00	368	126.00	77.00	170.00	4 199	3 578	17.4 %
Misc. - All weights	335	52.00	6.00	105.00	245	38.00	10.00	80.00	3 654	2 634	38.7 %
Female											
Good 90 -120 lbs	87	154.00	125.00	180.00	76	166.00	112.00	190.00	926	826	12.1 %
A2 Grain fed veal calves (hide off)	1398	205.40	n/a	n/a	1741	215.00	n/a	n/a	15 460	17 164	-9.9 %
596 lbs live - (325-353 lbs hide off)											

Source: Fédération des producteurs de bovins du Québec

Ontario Live Auction											
	2013				2012				Volume (YTD)		
	Number (head)	Price (\$ / 100 lbs)			Number (head)	Price (\$ / 100 lbs)			head		
		Average	Min	Max		Average	Min	Max	2013	2012	% chg
+ 600 lbs	623	83.44	76.06	95.47	670	97.83	89.51	107.28	6 078	5 798	4.8 %
451 - 600 lbs	49	83.72	68.52	94.82	69	100.38	89.85	109.61	444	585	-24.1 %
301 - 450 lbs	42	83.46	70.77	106.49	48	121.58	107.17	137.70	415	356	16.6 %
126 - 300 lbs	133	123.58	83.85	154.33	142	131.40	100.10	154.45	1 657	1 532	8.2 %
- 125 lbs	846	136.81	103.48	166.33	750	147.48	103.81	176.07	9 123	8 797	3.7 %

Federally Inspected Slaughter									
	Weekly			Year to date			Carcass Weight (lbs - Jan.-Dec.)		
	2013	2012	% chg	2013	2012	% chg	2012	2011	% chg
Ontario	705	711	-0.8 %	7 105	7 094	0.2 %	362	358	1.1 %
Quebec / Atlantic	3 538	3 691	-4.1 %	38 046	40 892	-7.0 %	302	301	0.5 %
Canada	4 243	4 402	-3.6 %	45 151	47 986	-5.9 %	311	310	0.3 %

Source: Canadian Beef Grading Agency

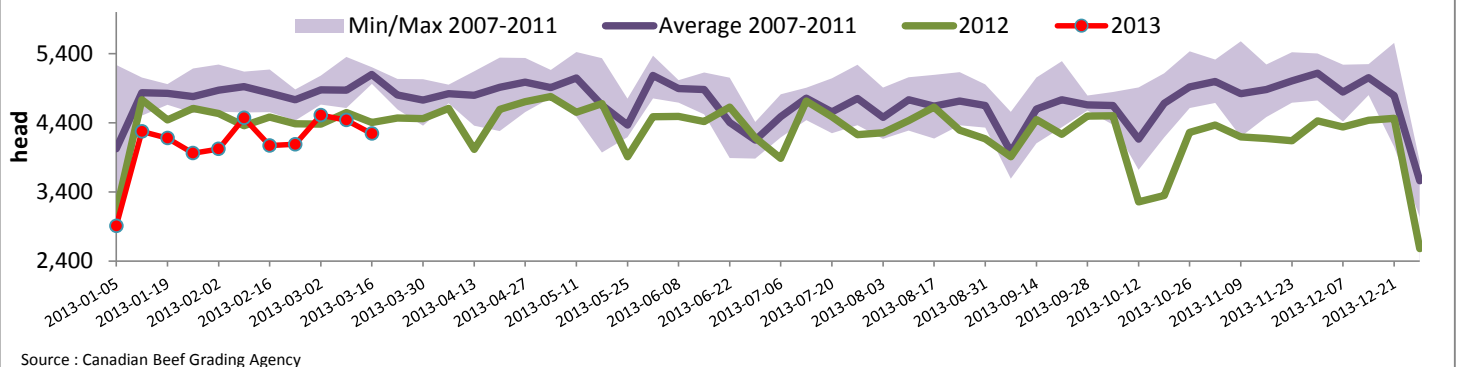
Source: CFIA

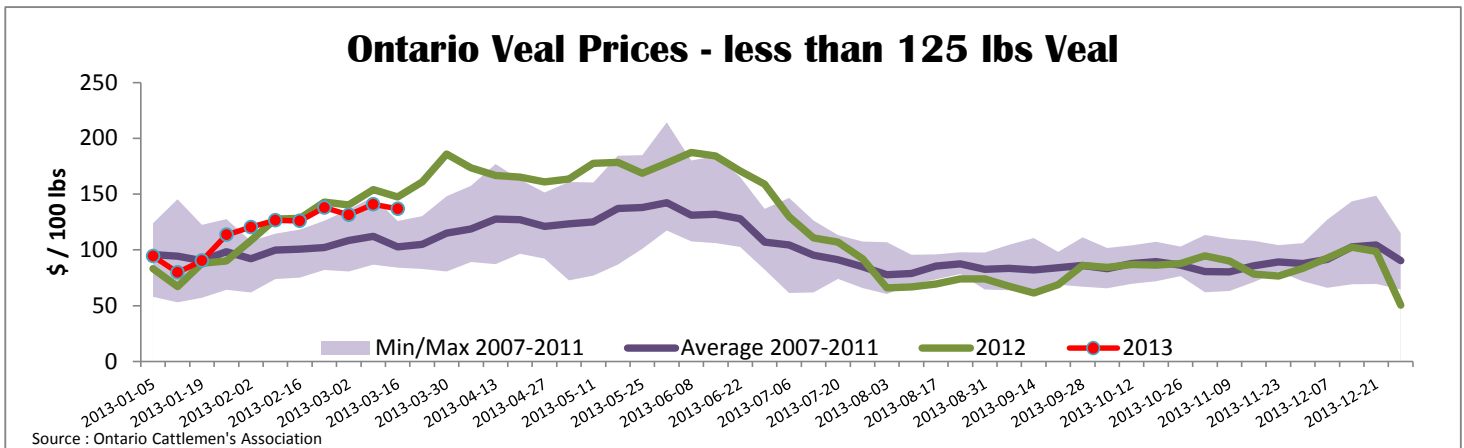
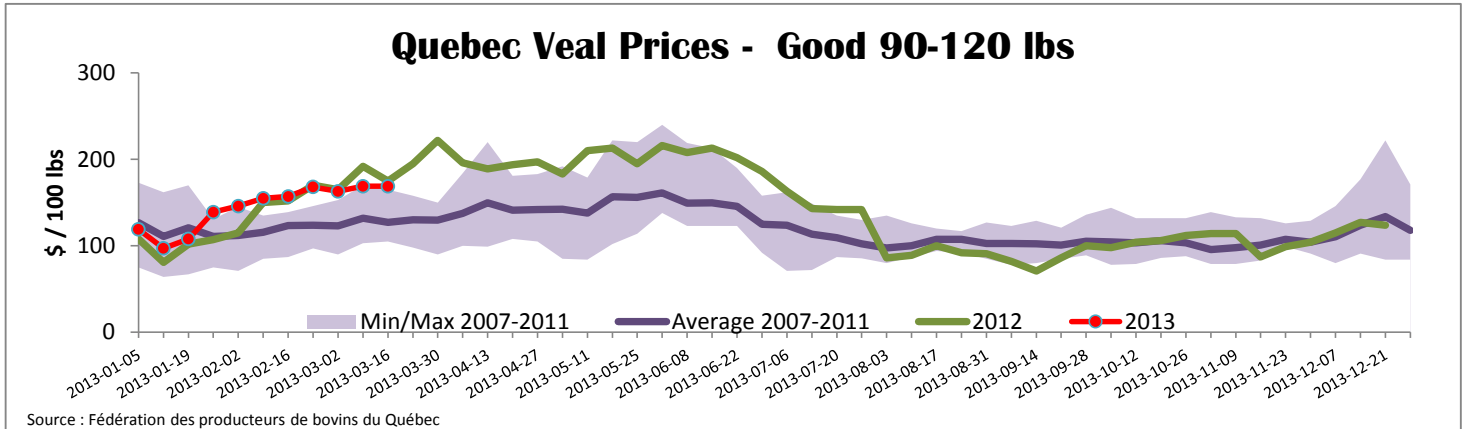
Exports					Imports				
Total veal (tonnes)	Jan. 1 - Jan. 31, 2013				Total veal (tonnes)	Jan. 1 - March 16, 2013			
	2013	2012	% chg			2013	2012	% chg	
United States	107	258	-58.6 %		United States	185	209	-11.6 %	
United Arab Emirates	12	6	80.7 %		Australia	163	235	-30.6 %	
Japan	1	13	-95.9 %		New Zealand	33	2		
Others	6	3			Mexico	15	0		
Total	125	280	-55.5 %		Total	396	446	-11.3 %	
Live calves (head)	Jan. 1 - Jan. 31				For the period Jan. 1 - 31	Live calves (head)			
		2	2			2 326	2 012		3 480

Source: Statistics Canada

Source: CFIA

Federally Inspected Veal Slaughter - Canada





United States										
Week ending March 16, 2013										
Federally Inspected Slaughter							U.S. Wholesale Price			
	Weekly			Year to date			\$/100 lbs	Simple avg	Min	Max
	2013	2012	% chg	2013	2012	% chg				
Milk-fed or nature *							307 Rack, Ribeye, Boneless	2 250.00	2 250.00	2 250.00
North East	3 667	3 104	18.1 %	35 532	34 240	3.8 %	332 Loin, Trimmed 4x4	575.00	525.00	625.00
North Central	2 555	3 133	-18.4 %	26 454	39 208	-32.5 %	1336 Leg slice, Retail	922.50	750.00	1 095.00
Total	6 222	6 237	-0.2 %	61 986	73 448	-15.6 %	1312 Osso Buco, Foreshank	945.00	795.00	1 095.00
Other calves	8 778	6 944	26.4 %	102 594	84 481	21.4 %	Shoulder Clod, Chuck	562.50	495.00	630.00
Total	15 000	13 181	13.8 %	164 580	157 929	4.2 %				
							Source : USDA			
Production							Pennsylvania Vintage Calf Auction			
Calves (millions lbs)	2.2	2.2	0.0 %	24	25	-4.0 %	Graded Holstein Bull Calves			
Live weight (lbs)	254	281	-9.6 %				March 12, 2013			
Dressed weight (lbs)	148	168	-11.9 %				\$/ 100 lbs	Min	Max	
			\$/ 100 lbs	Average	Min	Max	Number 1	112 - 122 lbs	116.00	128.00
(Veal Carcass, Special fed * (Hide off, 255-315 lbs))				349.80	332.00	360.00		104 - 110 lbs	134.00	135.00
* Special fed : milk fed, nature								95 - 103 lbs	146.00	147.00
								85 - 90 lbs	85.00	117.00
							Number 2	95 - 114 lbs	135.00	144.00
								84 - 90 lbs	100.00	124.00
							Number 3	109 - 118 lbs		80.00
								82 - 95 lbs	115.00	122.00
								73 lbs		40.00