



## Veal Supply at a Glance - Canada

For week ending March 23, 2013

Quebec Live Auction											
	2013				2012				Volume (YTD)		
	Number (head)	Price ( \$ / 100 lbs)			Number (head)	Price ( \$ / 100 lbs)			head		
Dairy Calves		Average	Min	Max		Average	Min	Max	2013	2012	% chg
Male											
Good 90 -120 lbs	754	165.00	140.00	180.00	896	195.00	172.00	220.00	10 471	10 970	-4.5 %
Good 121 - 140 lbs	195	169.00	150.00	190.00	193	184.00	165.00	205.00	2 718	2 323	17.0 %
Average 90 - 140 lbs	377	126.00	95.00	155.00	376	134.00	80.00	187.00	4 576	3 954	15.7 %
Misc. - All weights	415	52.00	14.00	100.00	236	39.00	15.00	80.00	4 069	2 870	41.8 %
Female											
Good 90 -120 lbs	62	146.00	117.00	175.00	86	190.00	122.00	235.00	988	912	8.3 %
A2 Grain fed veal calves (hide off)	1408	205.60	n/a	n/a	1741	215.00	n/a	n/a	16 868	18 739	-10.0 %
596 lbs live - (325-353 lbs hide off)											

Source: Fédération des producteurs de bovins du Québec

Ontario Live Auction											
	2013				2012				Volume (YTD)		
	Number (head)	Price ( \$ / 100 lbs)			Number (head)	Price ( \$ / 100 lbs)			head		
		Average	Min	Max		Average	Min	Max	2013	2012	% chg
+ 600 lbs	494	88.90	79.77	107.57	568	101.06	93.33	109.42	6 572	6 366	3.2 %
451 - 600 lbs	35	81.93	66.61	93.46	47	100.08	93.13	106.49	479	632	-24.2 %
301 - 450 lbs	31	79.62	62.69	110.03	45	118.91	88.60	146.27	446	401	11.2 %
126 - 300 lbs	133	124.33	91.27	152.39	152	136.67	107.56	170.11	1 790	1 684	6.3 %
- 125 lbs	851	133.11	97.38	159.08	814	160.90	114.73	192.56	9 974	9 611	3.8 %

Federally Inspected Slaughter									
	Weekly			Year to date			Carcass Weight (lbs - Jan.-Dec.)		
	2013	2012	% chg	2013	2012	% chg	2012	2011	% chg
Ontario	482	745	-35.3 %	7 587	7 839	-3.2 %	362	358	1.1 %
Quebec / Atlantic	3 719	3 721	-0.1 %	41 765	44 613	-6.4 %	302	301	0.5 %
<b>Canada</b>	<b>4 201</b>	<b>4 466</b>	<b>-5.9 %</b>	<b>49 352</b>	<b>52 452</b>	<b>-5.9 %</b>	<b>311</b>	<b>310</b>	<b>0.3 %</b>

Source : Canadian Beef Grading Agency

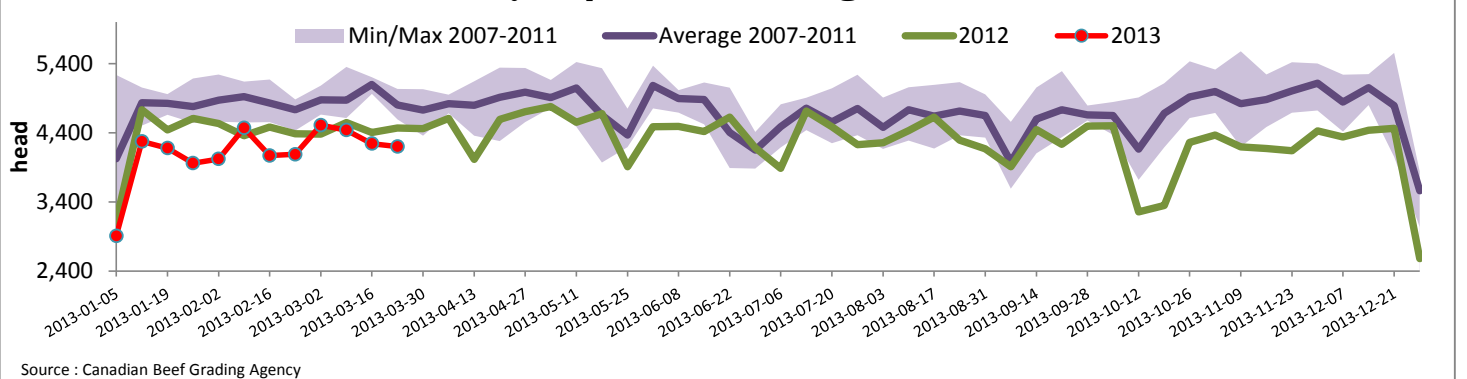
Source: CFIA

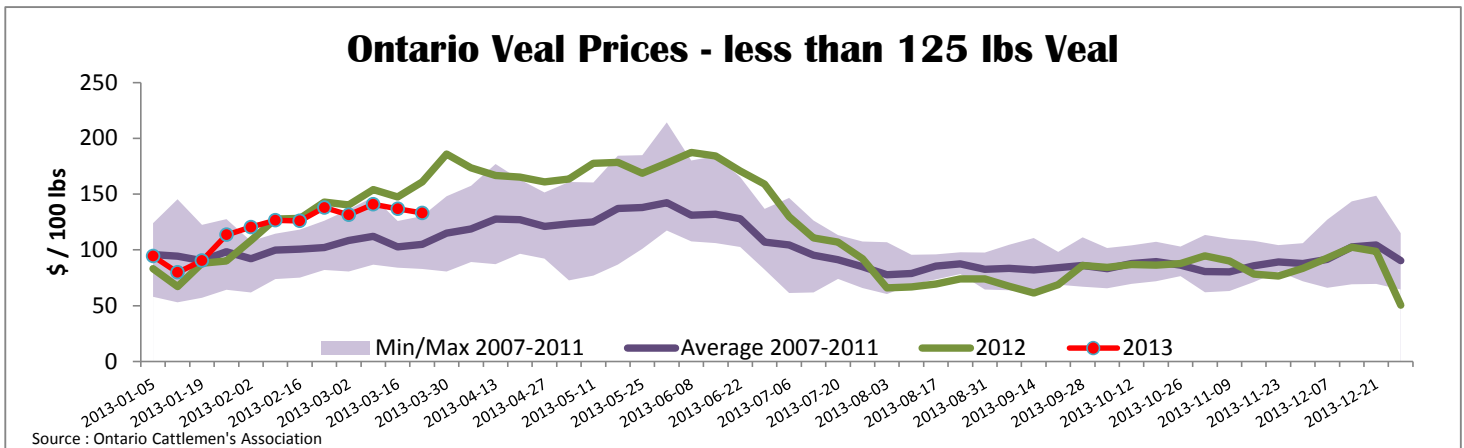
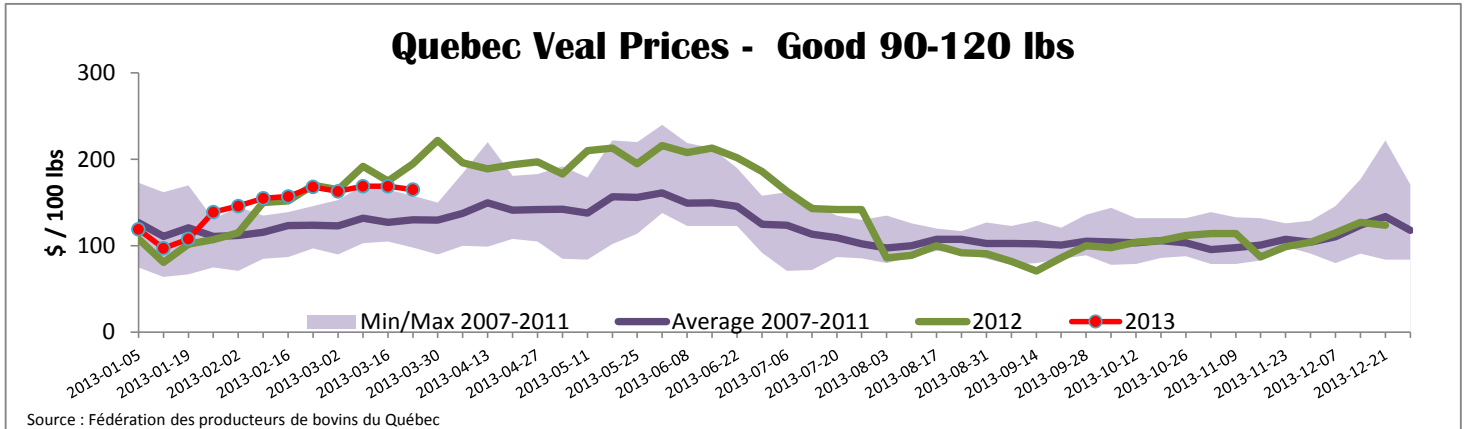
Exports					Imports				
Total veal (tonnes)	Jan. 1 - Jan. 31, 2013				Total veal (tonnes)	Jan. 1 - March 23, 2013			
	2013	2012	% chg			2013	2012	% chg	
United States	107	258	-58.6 %		United States	215	229	-6.0 %	
United Arab Emirates	12	6	80.7 %		Australia	244	248	-1.7 %	
Japan	1	13	-95.9 %		New Zealand	33	2		
Others	6	3			Mexico	15	0		
<b>Total</b>	<b>125</b>	<b>280</b>	<b>-55.5 %</b>		<b>Total</b>	<b>507</b>	<b>479</b>	<b>5.8 %</b>	
Live calves (head)	Jan. 1 - Jan. 31				For the period Jan. 1 - 31	Live calves (head)			
	2	2				2 326	3 480		

Source: Statistics Canada

Source: CFIA

### Federally Inspected Veal Slaughter - Canada





<b>United States</b>										
Week ending March 16, 2013										
Federally Inspected Slaughter					U.S. Wholesale Price					
	Weekly			Year to date			\$/100 lbs	Simple avg	Min	Max
	2013	2012	% chg	2013	2012	% chg				
Milk-fed or nature *							307 Rack, Ribeye, Boneless	2 250.00	2 250.00	2 250.00
North East	3 667	3 104	18.1 %	35 532	34 240	3.8 %	332 Loin, Trimmed 4x4	575.00	525.00	625.00
North Central	2 555	3 133	-18.4 %	26 454	39 208	-32.5 %	1336 Leg slice, Retail	922.50	750.00	1 095.00
<b>Total</b>	<b>6 222</b>	<b>6 237</b>	<b>-0.2 %</b>	<b>61 986</b>	<b>73 448</b>	<b>-15.6 %</b>	1312 Osso Buco, Foreshank	945.00	795.00	1 095.00
Other calves	8 778	6 944	26.4 %	102 594	84 481	21.4 %	Shoulder Clod, Chuck	562.50	495.00	630.00
<b>Total</b>	<b>15 000</b>	<b>13 181</b>	<b>13.8 %</b>	<b>164 580</b>	<b>157 929</b>	<b>4.2 %</b>				
Source : USDA										
<b>Production (03-23-2013)</b>					<b>Pennsylvania Vintage Calf Auction</b>					
Calves (millions lbs)	2.1	2.2	-4.5 %	26	27.2	-4.4 %	Graded Holstein Bull Calves			
Live weight (lbs)	247	282	-12.4 %				March 19, 2013			
Dressed weight (lbs)	144	168	-14.3 %				\$/ 100 lbs	Min	Max	
			\$/ 100 lbs	Average	Min	Max				
(Veal Carcass, Special fed * (Hide off, 255-315 lbs))				351.80	332.00	360.00				
* Special fed : milk fed, nature										
							Number 1		121 lbs	137.00
									112 - 113 lbs	150.00 155.00
									95 - 103 lbs	164.00 165.00
									90 lbs	130.00
							Number 2		114 lbs	140.00 141.00
									95 - 104 lbs	145.00 150.00
									90 lbs	127.00
									84 lbs	80.00
							Number 3		94 - 108 lbs	120.00 128.00
									75 - 83 lbs	55.00 70.00