



Veal Supply at a Glance - Canada

For week ending March 30, 2013

Quebec Live Auction											
	2013				2012				Volume (YTD)		
	Number (head)	Price (\$ / 100 lbs)			Number (head)	Price (\$ / 100 lbs)			head		
Dairy Calves		Average	Min	Max		Average	Min	Max	2013	2012	% chg
Male											
Good 90 -120 lbs	812	170.00	150.00	185.00	924	222.00	200.00	247.00	11 283	11 894	-5.1 %
Good 121 - 140 lbs	206	167.00	147.00	180.00	164	211.00	185.00	238.00	2 924	2 487	17.6 %
Average 90 - 140 lbs	457	128.00	95.00	155.00	276	150.00	72.00	218.00	5 033	4 230	19.0 %
Misc. - All weights	392	53.00	10.00	100.00	171	50.00	15.00	140.00	4 461	3 041	46.7 %
Female											
Good 90 -120 lbs	111	149.00	120.00	175.00	124	230.00	180.00	300.00	1 099	1 036	6.1 %
A2 Grain fed veal calves (hide off)	1319	205.40	n/a	n/a	1424	215.20	n/a	n/a	18 187	20 163	-9.8 %
596 lbs live - (325-353 lbs hide off)											

Source: Fédération des producteurs de bovins du Québec

Ontario Live Auction											
	2013				2012				Volume (YTD)		
	Number (head)	Price (\$ / 100 lbs)			Number (head)	Price (\$ / 100 lbs)			head		
		Average	Min	Max		Average	Min	Max	2013	2012	% chg
+ 600 lbs	300	87.93	81.64	94.26	584	101.35	90.67	116.67	6 872	6 950	-1.1 %
451 - 600 lbs	39	82.37	69.23	96.64	72	95.68	85.98	107.93	518	704	-26.4 %
301 - 450 lbs	30	80.23	64.40	94.73	47	120.10	82.90	148.18	476	448	6.3 %
126 - 300 lbs	115	108.16	73.47	144.24	119	143.48	95.21	194.71	1 905	1 803	5.7 %
- 125 lbs	763	134.26	89.43	161.22	912	186.06	125.40	227.95	10 737	10 523	2.0 %

Federally Inspected Slaughter									
	Weekly			Year to date			Carcass Weight (lbs - Jan.-Dec.)		
	2013	2012	% chg	2013	2012	% chg	2012	2011	% chg
Ontario	370	663	-44.2 %	7 957	8 502	-6.4 %	362	358	1.1 %
Quebec / Atlantic	3 413	3 795	-10.1 %	45 178	48 408	-6.7 %	302	301	0.5 %
Canada	3 783	4 458	-15.1 %	53 135	56 910	-6.6 %	311	310	0.3 %

Source: Canadian Beef Grading Agency

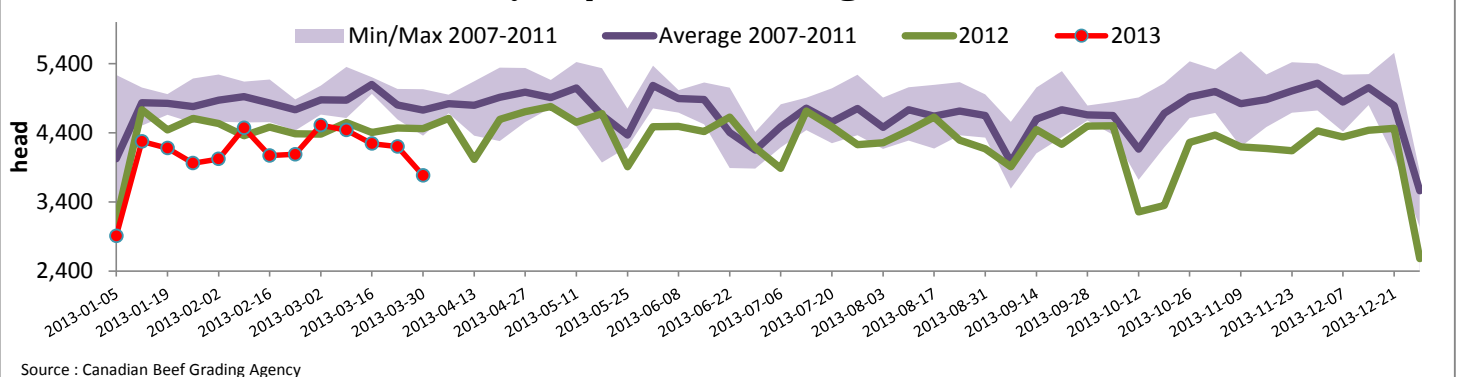
Source: CFIA

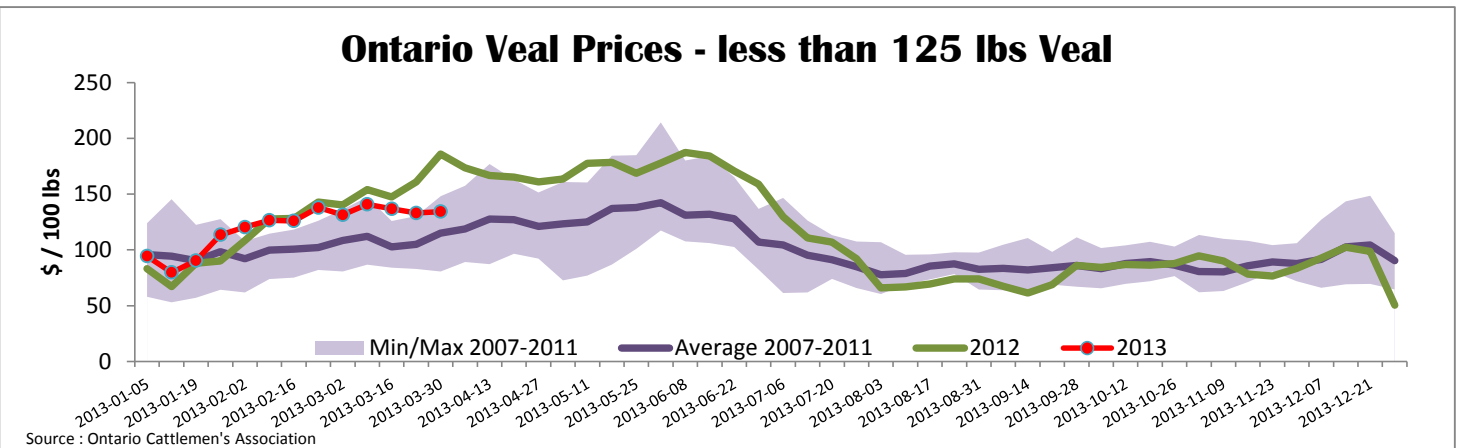
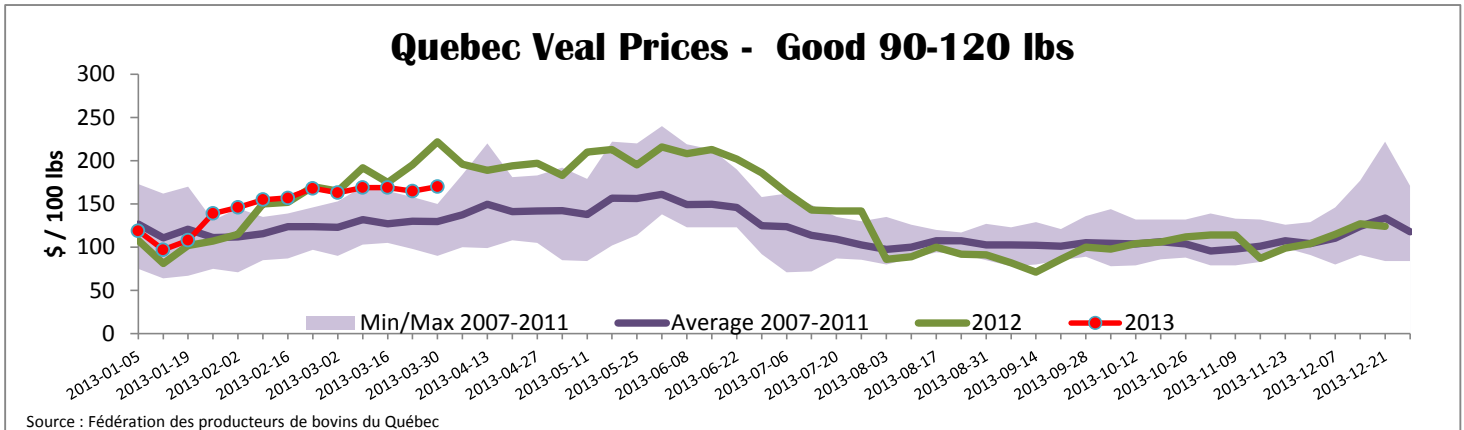
Exports					Imports				
Total veal (tonnes)	Jan. 1 - Jan. 31, 2013				Total veal (tonnes)	Jan. 1 - March 30, 2013			
	2013	2012	% chg			2013	2012	% chg	
United States	107	258	-58.6 %		United States	217	231	-5.9 %	
United Arab Emirates	12	6	80.7 %		Australia	260	273	-4.7 %	
Japan	1	13	-95.9 %		New Zealand	33	2		
Others	6	3			Mexico	15	0		
Total	125	280	-55.5 %		Total	525	506	3.8 %	
Live calves (head)	Jan. 1 - Jan. 31				For the period Jan. 1 - 31	Live calves (head)			
		2	2			2 326	2 012		3 480

Source: Statistics Canada

Source: CFIA

Federally Inspected Veal Slaughter - Canada





United States										
Week ending March 30, 2013										
Federally Inspected Slaughter					U.S. Wholesale Price					
	Weekly			Year to date			\$/100 lbs	Simple avg	Min	Max
	2013	2012	% chg	2013	2012	% chg				
Milk-fed or nature *							307 Rack, Ribeye, Boneless	2 250.00	2 250.00	2 250.00
North East	3 090	3 614	-14.5 %	42 079	40 849	3.0 %	332 Loin, Trimmed 4x4	575.00	525.00	625.00
North Central	2 167	3 188	-32.0 %	30 860	45 686	-32.5 %	1336 Leg slice, Retail	922.50	750.00	1 095.00
Total	5 257	6 802	-22.7 %	72 939	86 535	-15.7 %	1312 Osso Buco, Foreshank	945.00	795.00	1 095.00
Other calves	9 743	6 769	43.9 %	120 515	97 870	23.1 %	Shoulder Clod, Chuck	562.50	495.00	630.00
Total	15 000	13 571	10.5 %	193 454	184 405	4.9 %				
Source : USDA										
Production							Pennsylvania Vintage Calf Auction			
Calves (million lbs)	2.2	2.3	-4.3 %	28.2	29.5	-4.4 %	Graded Holstein Bull Calves			
Live weight (lbs)	252	283	-11.0 %				March 26, 2013			
Dressed weight (lbs)	148	168	-11.9 %				\$/ 100 lbs	Min	Max	
			\$/ 100 lbs	Average	Min	Max	Number 1	122 lbs	152.00	
(Veal Carcass, Special fed * (Hide off, 255-315 lbs)				349.90	332.00	360.00		95 - 113 lbs	174.00	
* Special fed : milk fed, nature								88 - 90 lbs	145.00	
							Number 2	112 - 114 lbs	167.00	
								95 - 102 lbs	180.00	
								90 lbs	145.00	
								84 lbs	100.00	
							Number 3	95 - 111 lbs	137.00	
								83 lbs	86.00	
								73 lbs	40.00	