



# Veal Supply at a Glance - Canada

For week ending April 20, 2013

Quebec Live Auction											
	2013				2012				Volume (YTD)		
	Number (head)	Price ( \$ / 100 lbs)			Number (head)	Price ( \$ / 100 lbs)			head		% chg
Dairy Calves		Average	Min	Max		Average	Min	Max	2013	2012	% chg
Male											
Good 90 -120 lbs	738	169.00	150.00	185.00	1015	194.00	180.00	215.00	13 579	14 378	-5.6 %
Good 121 - 140 lbs	180	167.00	150.00	180.00	199	184.00	160.00	200.00	3 511	2 990	17.4 %
Average 90 - 140 lbs	408	132.00	100.00	155.00	364	143.00	80.00	185.00	6 062	5 323	13.9 %
Misc. - All weights	349	46.00	15.00	100.00	199	44.00	6.00	80.00	5 437	3 611	50.6 %
Female											
Good 90 -120 lbs	87	153.00	128.00	180.00	124	208.00	160.00	250.00	1 353	1 334	1.4 %
A2 Grain fed veal calves (hide off)	1313	205.50	n/a	n/a	1533	205.10	n/a	n/a	22 172	24 894	-10.9 %
596 lbs live - (325-353 lbs hide off)											

Source: Fédération des producteurs de bovins du Québec

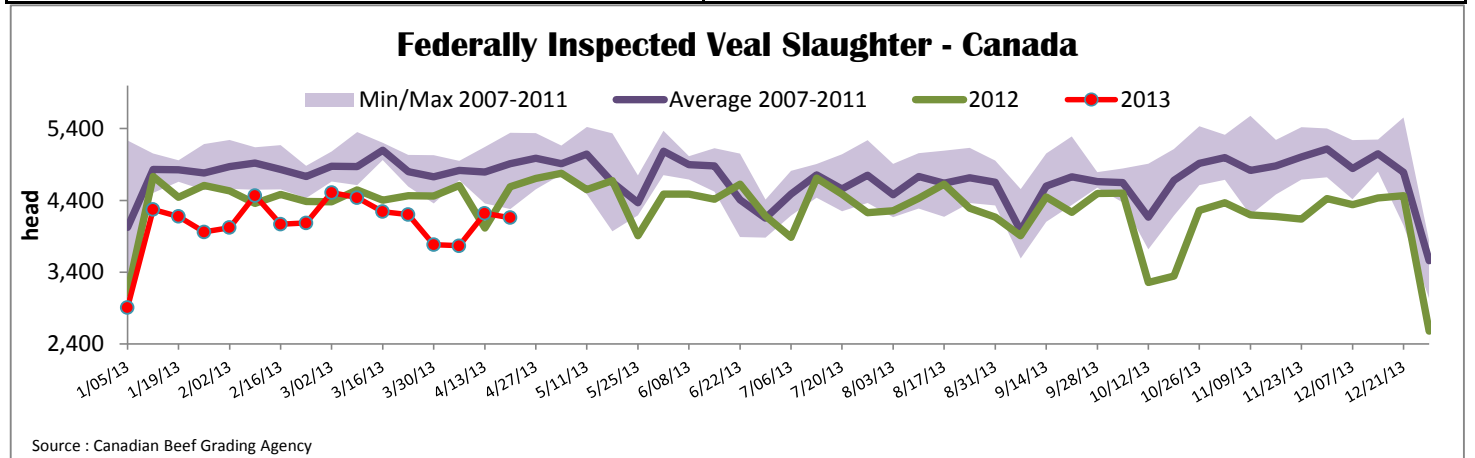
Ontario Live Auction											
	2013				2012				Volume (YTD)		
	Number (head)	Price ( \$ / 100 lbs)			Number (head)	Price ( \$ / 100 lbs)			head		% chg
		Average	Min	Max		Average	Min	Max	2013	2012	% chg
+ 600 lbs	808	89.75	78.09	101.72	761	88.96	76.80	98.83	8 974	8 868	1.2 %
451 - 600 lbs	32	88.33	76.95	97.14	49	92.38	86.60	99.88	618	844	-26.8 %
301 - 450 lbs	36	98.18	81.28	133.50	28	121.08	89.25	146.82	562	528	6.4 %
126 - 300 lbs	144	115.96	84.47	142.59	142	140.91	103.43	175.23	2 299	2 213	3.9 %
- 125 lbs	799	134.45	90.34	162.77	837	165.36	119.04	199.14	13 054	13 419	-2.7 %

Federally Inspected Slaughter									
	Weekly			Year to date			Carcass Weight (lbs - Jan.-Dec.)		
	2013	2012	% chg	2013	2012	% chg	2012	2011	% chg
Ontario	408	654	-37.6 %	9 315	10 374	-10.2 %	362	358	1.1 %
Quebec / Atlantic	3 751	3 937	-4.7 %	55 968	59 750	-6.3 %	302	301	0.5 %
<b>Canada</b>	<b>4 159</b>	<b>4 591</b>	<b>-9.4 %</b>	<b>65 283</b>	<b>70 124</b>	<b>-6.9 %</b>	<b>311</b>	<b>310</b>	<b>0.3 %</b>

Source: Canadian Beef Grading Agency

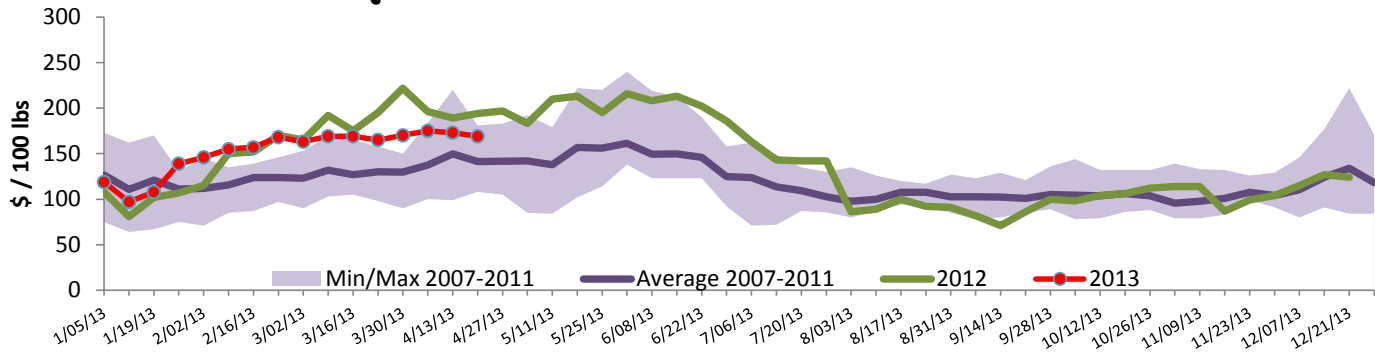
Exports					Imports					
	Jan. 1 - Feb. 28, 2013	2013			2012			2013		
		(tonnes)		% chg	(tonnes)		% chg	(tonnes)		% chg
Total veal										
United States		236	465	-49.2 %		264	294	-10.2 %		
United Arab Emirates		19	19	0.0 %		318	310	2.8 %		
Russia		9	7	28.6 %		33	16			
Others		10	17	-41.2 %		15	0			
<b>Total</b>		<b>274</b>	<b>508</b>	<b>-46.1 %</b>		<b>631</b>	<b>620</b>	<b>1.6 %</b>		
Live calves (head)	Jan. 1 - Feb. 28	148	188		For the period Jan. 1 - Feb. 28	2013	2 012			
					Live calves (head)	5 711	7 382			

Source: Statistics Canada



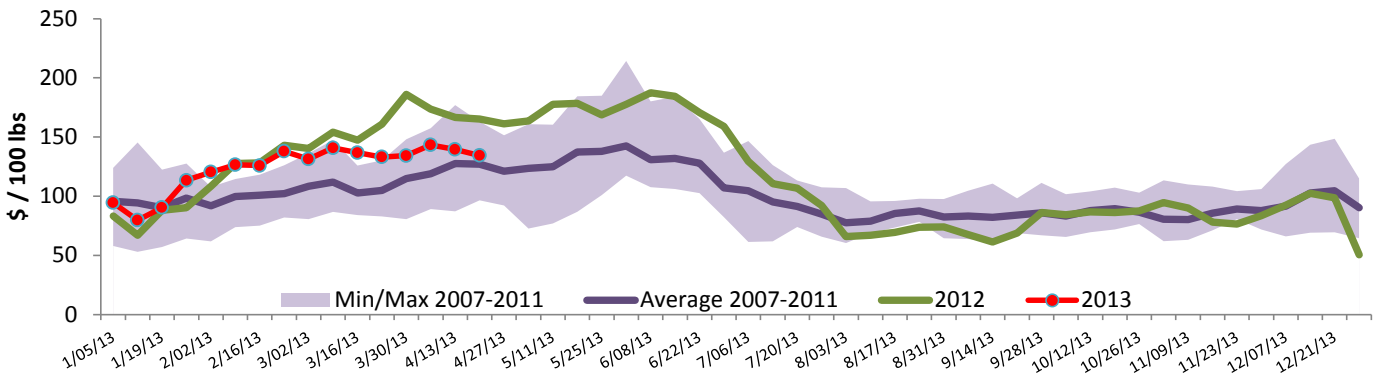


### Quebec Veal Prices - Good 90-120 lbs



Source : Fédération des producteurs de bovins du Québec

### Ontario Veal Prices - less than 125 lbs Veal



Source : Ontario Cattlemen's Association

## United States

Week ending April 20, 2013

Federally Inspected Slaughter				U.S. Wholesale Price							
	Weekly			Year to date			\$/100 lbs	Simple avg	Min	Max	
	2013	2012	% chg	2013	2012	% chg					
Milk-fed or nature *							307 Rack, Ribeye, Boneless	2 250.00	2 250.00	2 250.00	
North East	3 305	3 756	-12.0 %	48 300	50 997	-5.3 %	332 Loin, Trimmed 4x4	575.00	525.00	625.00	
North Central	2 511	3 388	-25.9 %	36 055	55 433	-35.0 %	1336 Leg slice, Retail	922.50	750.00	1 095.00	
<b>Total</b>	<b>5 816</b>	<b>7 144</b>	<b>-18.6 %</b>	<b>84 355</b>	<b>106 430</b>	<b>-20.7 %</b>	1312 Osso Buco, Foreshank	945.00	795.00	1 095.00	
Other calves	9 184	6 380	43.9 %	150 069	117 293	27.9 %	Shoulder Clod, Chuck	570.00	495.00	645.00	
<b>Total</b>	<b>15 000</b>	<b>13 524</b>	<b>10.9 %</b>	<b>234 424</b>	<b>223 723</b>	<b>4.8 %</b>					
Source : USDA											
Production							<b>Pennsylvania Vintage Calf Auction</b>				
Calves (million lbs)	2.2	2.2	0.0 %	34.4	36.3	-5.2 %	Graded Holstein Bull Calves				
Live weight (lbs)	248	298	-16.8 %				April 16, 2013				
Dressed weight (lbs)	146	178	-18.0 %				\$ / 100 lbs	Min	Max		
				\$ / 100 lbs	Average	Min	Max	Number 1	121 lbs	152.00	152.00
(Veal Carcass, Special fed * (Hide off, 255-315 lbs)				350.63	332.00	360.00			95 - 113 lbs	174.00	185.00
* Special fed : milk fed, nature									90 lbs	167.00	167.00
								Number 2	95 - 114 lbs	172.00	185.00
									85 - 108 lbs	154.00	169.00
									73 lbs	90.00	90.00
								Number 3	85 - 108 lbs	154.00	169.00
									73 lbs	90.00	90.00