



Veal Supply at a Glance - Canada

For week ending April 27, 2013

Quebec Live Auction											
Dairy Calves	Number (head)	2013 Price (\$ / 100 lbs)			Number (head)	2012 Price (\$ / 100 lbs)			Volume (YTD) head		
		Average	Min	Max		Average	Min	Max	2013	2012	% chg
Male											
Good 90 -120 lbs	882	182.00	164.00	202.00	846	197.00	180.00	217.00	14 461	15 224	-5.0 %
Good 121 - 140 lbs	204	180.00	160.00	200.00	202	196.00	177.00	217.00	3 715	3 192	16.4 %
Average 90 - 140 lbs	382	136.00	100.00	170.00	314	149.00	100.00	180.00	6 444	5 637	14.3 %
Misc. - All weights	282	64.00	15.00	120.00	195	33.00	10.00	70.00	5 719	3 806	50.3 %
Female											
Good 90 -120 lbs	100	170.00	140.00	200.00	70	197.00	170.00	230.00	1 453	1 404	3.5 %
A2 Grain fed veal calves (hide off)	1294	205.60	n/a	n/a	1578	205.10	n/a	n/a	23 466	26 472	-11.4 %
596 lbs live - (325-353 lbs hide off)											

Source: Fédération des producteurs de bovins du Québec

Ontario Live Auction											
	Number (head)	2013 Price (\$ / 100 lbs)			Number (head)	2012 Price (\$ / 100 lbs)			Volume (YTD) head		
		Average	Min	Max		Average	Min	Max	2013	2012	% chg
+ 600 lbs	660	90.86	79.19	105.02	576	89.68	79.02	102.83	9 634	9 444	2.0 %
451 - 600 lbs	34	87.89	77.68	99.35	60	89.35	75.42	102.78	652	904	-27.9 %
301 - 450 lbs	36	99.78	71.28	114.86	41	111.73	85.59	136.32	598	569	5.1 %
126 - 300 lbs	117	137.65	104.05	173.11	143	144.54	98.87	181.94	2 416	2 356	2.5 %
- 125 lbs	843	146.76	101.13	180.46	855	161.05	104.88	201.16	13 897	14 274	-2.6 %

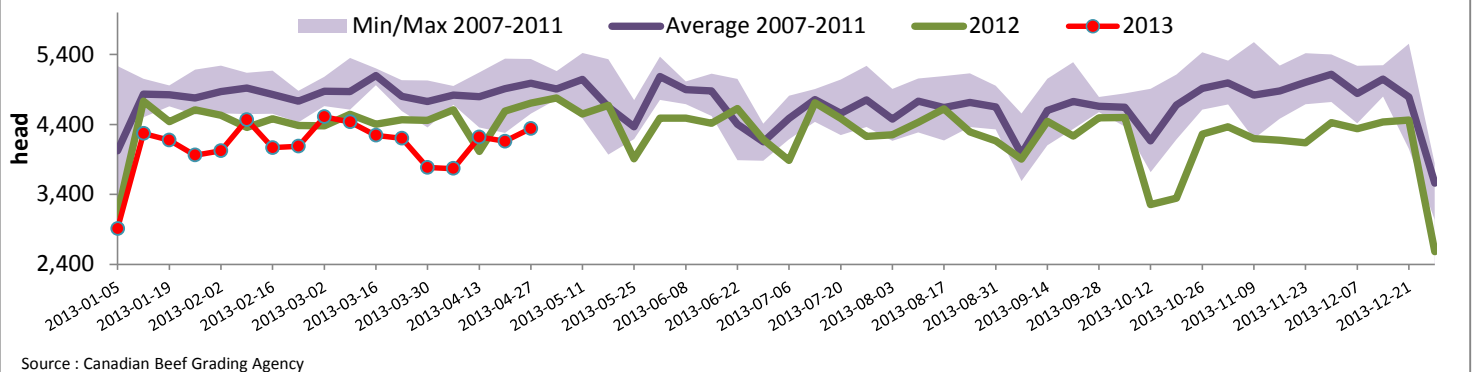
Federally Inspected Slaughter									
	Weekly			Year to date			Carcass Weight (lbs - Jan.-Dec.)		
	2013	2012	% chg	2013	2012	% chg	2012	2011	% chg
Ontario	653	644	1.4 %	9 968	11 018	-9.5 %	362	358	1.1 %
Quebec / Atlantic	3 689	4 060	-9.1 %	59 657	63 810	-6.5 %	302	301	0.5 %
Canada	4 342	4 704	-7.7 %	69 625	74 828	-7.0 %	311	310	0.3 %

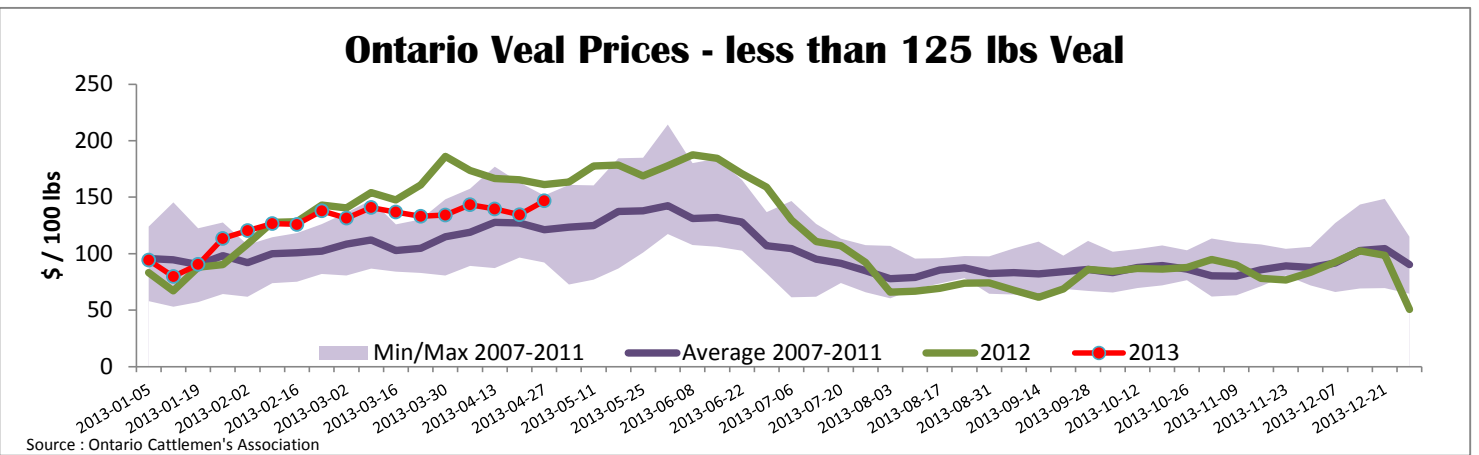
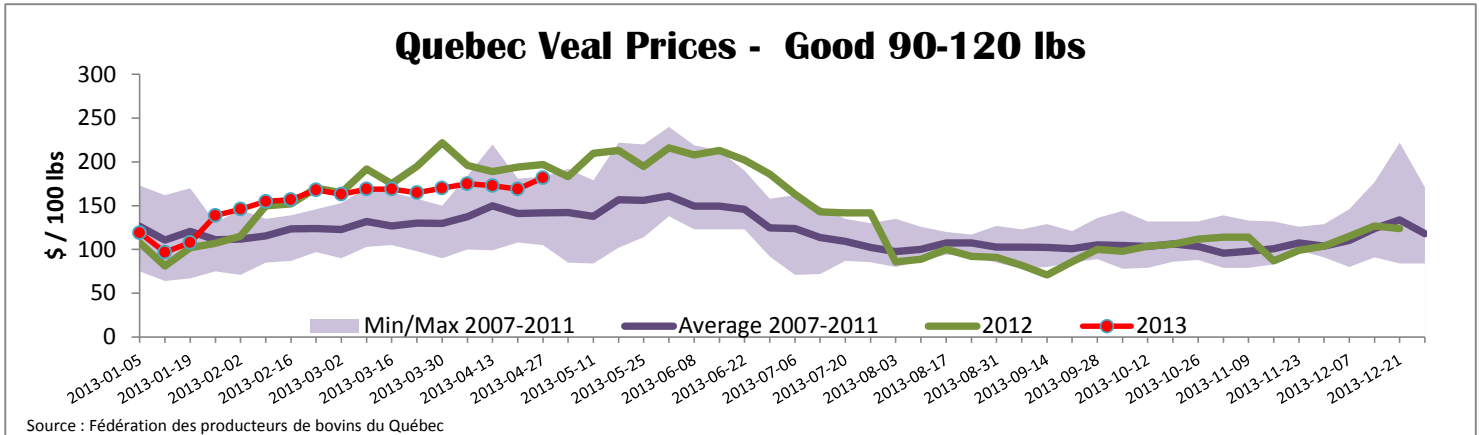
Source: Canadian Beef Grading Agency Source: CFIA

Exports				Imports					
Total veal (tonnes)	Jan. 1 - March 30, 2013	2013	2012	% chg	Total veal (tonnes)	Jan. 1 - April 27, 2013	2013	2012	% chg
United States		399	689	-42.1 %	United States		283	324	-12.8 %
United Arab Emirates		33	23	38.8 %	Australia		337	328	2.7 %
Russia		14	21	-32.9 %	New Zealand		33	16	
Others		11	20	-44.9 %	Mexico		15	0	
Total		456	753	-39.4 %	Total		667	669	-0.2 %
Live calves (head)	Jan. 1 - March 30	272	495		For the period Jan. 1 - Feb. 28		2013	2 012	
					Live calves (head)		5 711	7 382	

Source: Statistics Canada Source: CFIA

Federally Inspected Veal Slaughter - Canada





United States											
Week ending April 27, 2013											
Federally Inspected Slaughter							U.S. Wholesale Price				
	Weekly			Year to date			\$/100 lbs	Simple avg	Min	Max	
	2013	2012	% chg	2013	2012	% chg					
Milk-fed or nature *							307 Rack, Ribeye, Boneless	2 250.00	2 250.00	2 250.00	
North East	3 370	3 442	-2.1 %	51 670	54 439	-5.1 %	332 Loin, Trimmed 4x4	575.00	525.00	625.00	
North Central	2 319	3 531	-34.3 %	38 374	58 964	-34.9 %	1336 Leg slice, Retail	922.50	750.00	1 095.00	
Total	5 689	6 973	-18.4 %	90 044	113 403	-20.6 %	1312 Osso Buco, Foreshank	945.00	795.00	1 095.00	
Other calves	8 311	6 094	36.4 %	155 807	123 387	26.3 %	Shoulder Clod, Chuck	570.00	495.00	645.00	
Total	14 000	13 067	7.1 %	245 851	236 790	3.8 %					
							Source : USDA				
Production							Pennsylvania Vintage Calf Auction				
Calves (million lbs)	2.1	2.4	-12.5 %	36.3	38.7	-6.2 %	Graded Holstein Bull Calves April 23, 2013				
Live weight (lbs)	252	303	-16.8 %				\$/ 100 lbs	Min	Max		
Dressed weight (lbs)	148	182	-18.7 %								
							Source : USDA				
							\$/ 100 lbs	Average	Min	Max	
(Veal Carcass, Special fed * (Hide off, 255-315 lbs))							349.19	332.00	360.00		
* Special fed : milk fed, nature											
							Number 1	123 lbs		207.00	207.00
								95 - 112 lbs		225.00	235.00
								90 lbs		190.00	190.00
							Number 2	95 - 115 lbs		225.00	246.00
								83 - 90 lbs		137.00	150.00
							Number 3	95 - 108 lbs		165.00	177.00
								82 - 94 lbs		145.00	157.00
								74 lbs		80.00	80.00