



Veal Supply at a Glance - Canada

For week ending May 4, 2013

Quebec Live Auction											
Dairy Calves	Number (head)	2013 Price (\$ / 100 lbs)			Number (head)	2012 Price (\$ / 100 lbs)			Volume (YTD) head		
		Average	Min	Max		Average	Min	Max	2013	2012	% chg
Male											
Good 90 -120 lbs	883	188.00	167.00	208.00	807	183.00	165.00	200.00	15 344	16 031	-4.3 %
Good 121 - 140 lbs	217	184.00	160.00	200.00	186	179.00	162.00	192.00	3 952	3 378	17.0 %
Average 90 - 140 lbs	312	143.00	105.00	175.00	332	139.00	80.00	180.00	6 756	5 969	13.2 %
Misc. - All weights	256	69.00	10.00	140.00	278	37.00	11.00	82.00	5 975	4 084	46.3 %
Female											
Good 90 -120 lbs	109	170.00	135.00	190.00	44	168.00	130.00	190.00	1 562	1 448	7.9 %
A2 Grain fed veal calves (hide off)	1229	205.70	n/a	n/a	1427	205.20	n/a	n/a	24 695	27 899	-11.5 %
596 lbs live - (325-353 lbs hide off)											

Source: Fédération des producteurs de bovins du Québec

Ontario Live Auction											
	Number (head)	2013 Price (\$ / 100 lbs)			Number (head)	2012 Price (\$ / 100 lbs)			Volume (YTD) head		
		Average	Min	Max		Average	Min	Max	2013	2012	% chg
+ 600 lbs	646	90.52	76.85	102.46	570	88.44	81.23	103.65	10 280	10 014	2.7 %
451 - 600 lbs	58	81.21	66.05	91.73	45	84.56	64.47	96.70	710	949	-25.2 %
301 - 450 lbs	40	115.08	99.23	128.88	33	129.37	96.61	151.24	638	602	6.0 %
126 - 300 lbs	118	129.65	89.86	167.71	120	143.02	100.51	181.87	2 534	2 476	2.3 %
- 125 lbs	848	151.19	101.25	182.78	713	163.55	107.20	197.68	14 745	14 987	-1.6 %

Federally Inspected Slaughter									
	Weekly			Year to date			Carcass Weight (lbs - Jan.-March)		
	2013	2012	% chg	2013	2012	% chg	2013	2012	% chg
Ontario	549	755	-27.3 %	10 517	11 773	-10.7 %	365	359	1.9 %
Quebec / Atlantic	3 672	4 022	-8.7 %	63 329	67 832	-6.6 %	302	299	1.1 %
Canada	4 221	4 777	-11.6 %	73 846	79 605	-7.2 %	311	307	1.2 %

Source : Canadian Beef Grading Agency

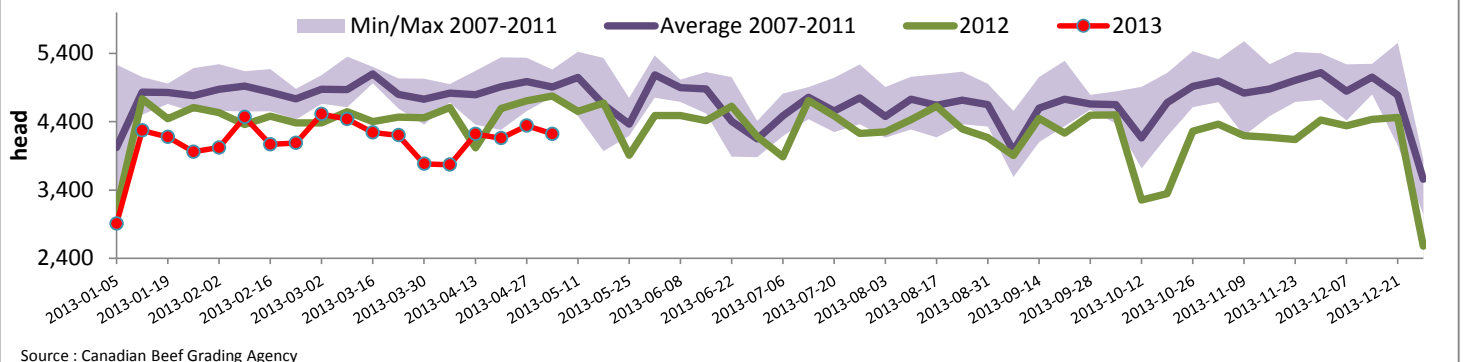
Source: CFIA

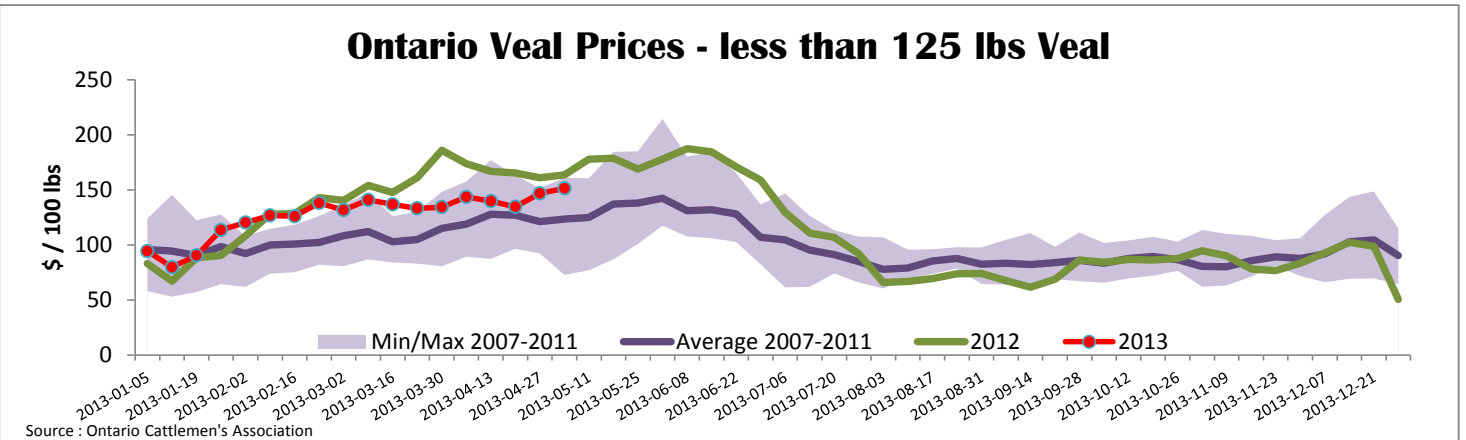
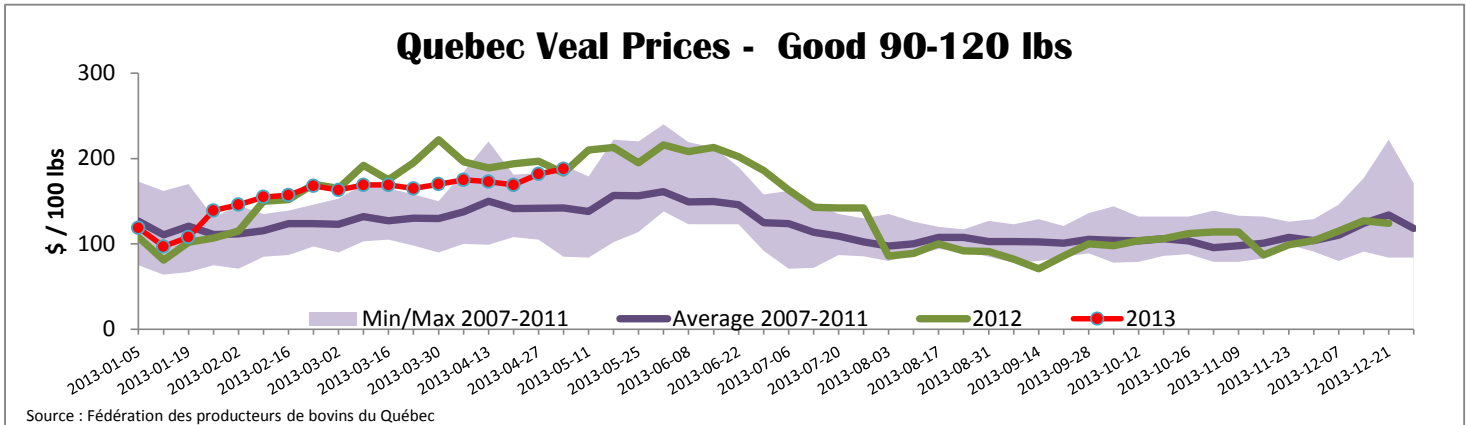
Exports				Imports			
Total veal (tonnes)	Jan. 1 - March 30, 2013			Total veal (tonnes)	Jan. 1 - May 4, 2013		
	2013	2012	% chg		2013	2012	% chg
United States	399	689	-42.1 %	287	334	-14.2 %	
United Arab Emirates	33	23	38.8 %	337	375	-10.2 %	
Russia	14	21	-32.9 %	33	16		
Others	11	20	-44.9 %	15	0		
Total	456	753	-39.4 %	672	726	-7.5 %	
Live calves (head)	Jan. 1 - March 30			For the period Jan. 1 - Mar. 30			
	272	495		2013	2012		
				9 762	12 270		

Source: Statistics Canada

Source: CFIA

Federally Inspected Veal Slaughter - Canada





United States										
Week ending May 4, 2013										
Federally Inspected Slaughter							U.S. Wholesale Price			
	Weekly			Year to date			\$/100 lbs	Simple avg	Min	Max
Milk-fed or nature *	2013	2012	% chg	2013	2012	% chg	307 Rack, Ribeye, Boneless	2 250.00	2 250.00	2 250.00
North East	3 189	3 530	-9.7 %	58 356	57 969	0.7 %	332 Loin, Trimmed 4x4	575.00	525.00	625.00
North Central	2 411	2 977	-19.0 %	43 251	61 941	-30.2 %	1336 Leg slice, Retail	922.50	750.00	1 095.00
Total	5 600	6 507	-13.9 %	101 607	119 910	-15.3 %	1312 Osso Buco, Foreshank	947.50	800.00	1 095.00
Other calves	8 400	6 325	32.8 %	156 639	129 712	20.8 %	Shoulder Clod, Chuck	570.00	495.00	645.00
Total	14 000	12 832	9.1 %	258 246	249 622	3.5 %				
							Source : USDA			
Production							Pennsylvania Vintage Calf Auction			
Calves (million lbs)	2.1	2.3	-8.7 %	38.2	41	-6.8 %	Graded Holstein Bull Calves			April 30, 2013
Live weight (lbs)	262	302	-13.2 %				\$/ 100 lbs	Min	Max	
Dressed weight (lbs)	155	181	-14.4 %							
							Source : USDA			
(Veal Carcass, Special fed * (Hide off, 255-315 lbs))			\$/ 100 lbs	Average	Min	Max	Number 1	112 - 122 lbs	162.00	167.00
* Special fed : milk fed, nature				356.54	340.00	360.00		95 - 104 lbs	170.00	175.00
								90 lbs	147.00	147.00
							Number 2	112 - 113 lbs	140.00	142.00
								95 - 102 lbs	157.00	162.00
								90 lbs	145.00	145.00
								84 lbs	105.00	105.00
							Number 3	95 - 110 lbs	120.00	125.00
								73 - 84 lbs	95.00	105.00