



Veal Supply at a Glance - Canada

For week ending May 18, 2013

Quebec Live Auction											
Dairy Calves	2013				2012				Volume (YTD)		
	Number (head)	Price (\$ / 100 lbs)			Number (head)	Price (\$ / 100 lbs)			head		
Male		Average	Min	Max		Average	Min	Max	2013	2012	% chg
Good 90 -120 lbs	875	189.00	170.00	209.00	948	213.00	180.00	245.00	17 172	17 730	-3.1 %
Good 121 - 140 lbs	164	186.00	160.00	200.00	173	204.00	165.00	235.00	4 299	3 696	16.3 %
Average 90 - 140 lbs	407	153.00	120.00	178.00	336	157.00	100.00	205.00	7 455	6 550	13.8 %
Misc. - All weights	270	54.00	10.00	120.00	201	51.00	15.00	100.00	6 502	4 439	46.5 %
Female											
Good 90 -120 lbs	88	174.00	140.00	200.00	82	198.00	150.00	238.00	1 749	1 593	9.8 %
A2 Grain fed veal calves (hide off)	1403	205.30	n/a	n/a	1400	190.30	n/a	n/a	27 551	30 905	-10.9 %
596 lbs live - (325-353 lbs hide off)											

Source: Fédération des producteurs de bovins du Québec

Ontario Live Auction											
	2013				2012				Volume (YTD)		
	Number (head)	Price (\$ / 100 lbs)			Number (head)	Price (\$ / 100 lbs)			head		
+ 600 lbs	639	90.12	77.36	102.16	441	96.44	86.40	109.52	11 517	11 055	4.2 %
451 - 600 lbs	46	89.83	75.09	100.34	39	88.79	75.91	101.77	790	1 034	-23.6 %
301 - 450 lbs	49	105.92	73.53	121.16	31	112.52	92.32	142.10	705	660	6.8 %
126 - 300 lbs	150	141.99	99.99	177.31	125	150.41	116.06	180.57	2 765	2 758	0.3 %
- 125 lbs	866	160.14	117.25	192.29	816	178.53	132.39	214.31	16 393	16 581	-1.1 %

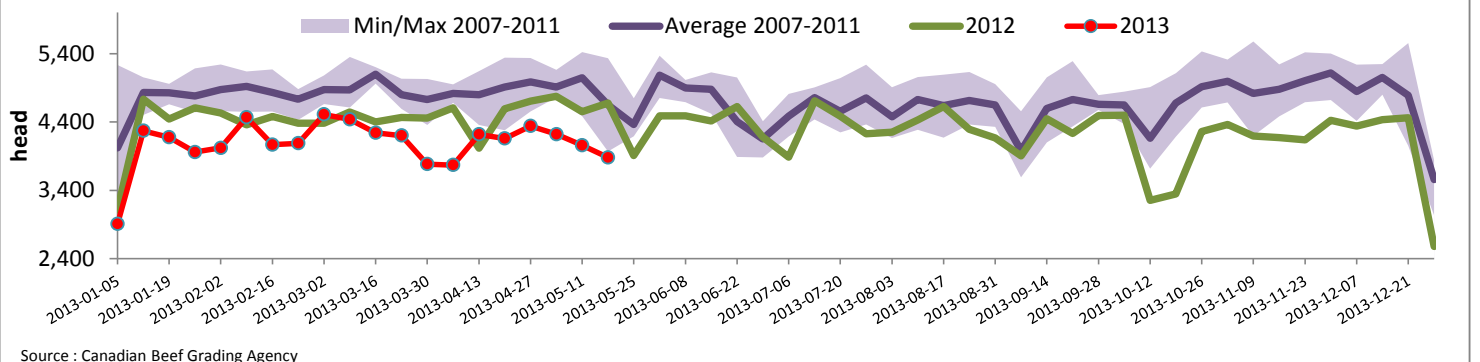
Federally Inspected Slaughter									
	Weekly			Year to date			Carcass Weight (lbs - Jan.-March)		
	2013	2012	% chg	2013	2012	% chg	2013	2012	% chg
Ontario	603	532	13.3 %	11 588	12 982	-10.7 %	365	359	1.9 %
Quebec / Atlantic	3 276	4 143	-20.9 %	70 194	75 849	-7.5 %	302	299	1.1 %
Canada	3 879	4 675	-17.0 %	81 782	88 831	-7.9 %	311	307	1.2 %

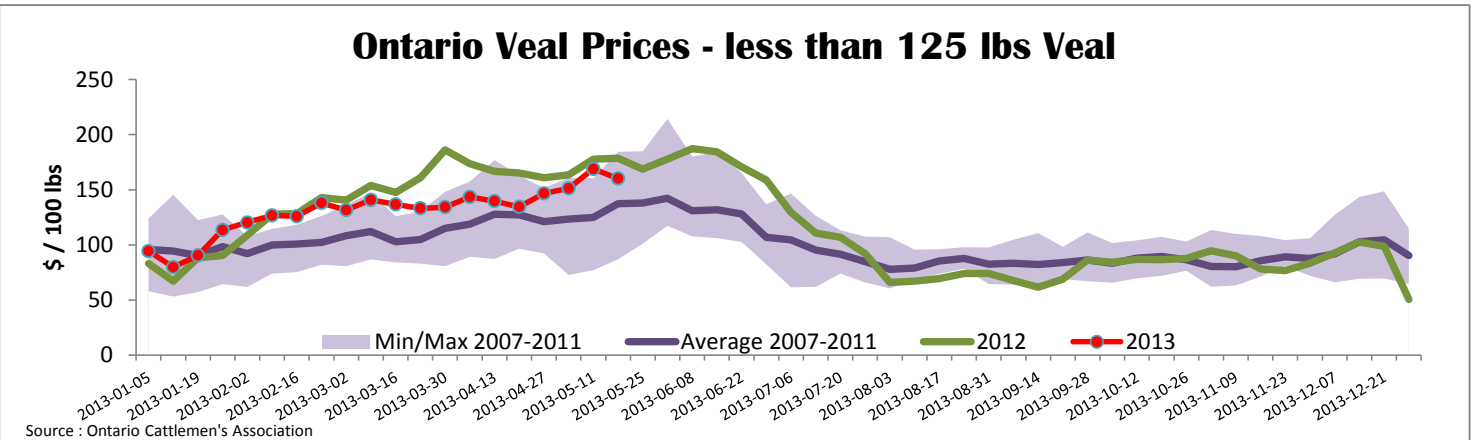
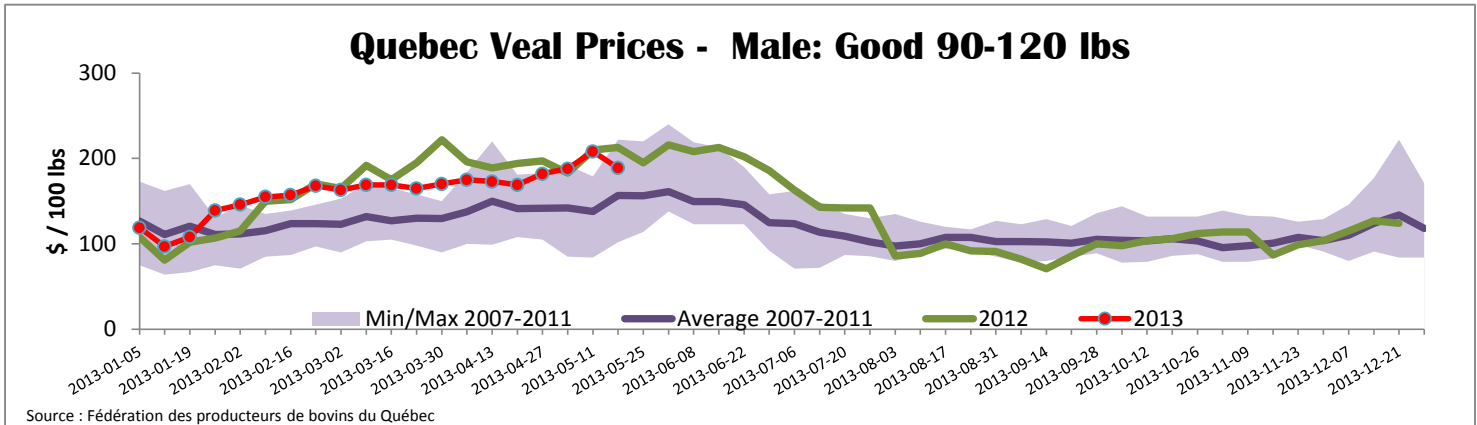
Source : Canadian Beef Grading Agency Source: CFIA

Exports					Imports				
Total veal (tonnes)	Jan. 1 - March 30, 2013				Total veal (tonnes)	Jan. 1 - May 18, 2013			
	2013	2012	% chg			2013	2012	% chg	
United States	399	689	-42.1 %		United States	310	383	-19.0 %	
United Arab Emirates	33	23	38.8 %		Australia	362	409	-11.7 %	
Russia	14	21	-32.9 %		New Zealand	33	16		
Others	11	20	-44.9 %		Mexico	15	0		
Total	456	753	-39.4 %		Total	720	809	-11.0 %	
Live calves (head)	Jan. 1 - March 30				For the period Jan. 1 - Mar. 30				
	272	495				2013	2012		
						9 762	12 270		

Source: Statistics Canada Source: CFIA

Federally Inspected Veal Slaughter - Canada





United States											
Week ending May 18, 2013											
Federally Inspected Slaughter						Northeast and North Central U.S. Wholesale Price					
	Weekly			Year to date			\$/100 lbs		Simple avg	Min	Max
	2013	2012	% chg	2013	2012	% chg					
Milk-fed or nature *							307 Rack, Ribeye, Boneless	2 250.00	2 250.00	2 250.00	
North East	3 412	3 143	8.6 %	65 110	64 561	0.9 %	332 Loin, Trimmed 4x4	592.00	559.00	625.00	
North Central	2 175	3 255	-33.2 %	47 756	68 848	-30.6 %	1336 Leg slice, Retail	922.50	750.00	1 095.00	
Total	5 587	6 398	-12.7 %	112 866	133 409	-15.4 %	1312 Osso Buco, Foreshank	947.50	800.00	1 095.00	
Other calves	7 413	6 718	10.3 %	170 077	142 189	19.6 %	Shoulder Clod, Chuck	570.00	495.00	645.00	
Total	13 000	13 116	-0.9 %	282 943	275 598	2.7 %					Source : USDA
Production							Pennsylvania Vintage Calf Auction				
Calves (million lbs)	2	2.2	-9.1 %	42	45.5	-7.7 %	Graded Holstein Bull Calves		May 14, 2013		
Live weight (lbs)	268	284	-5.6 %				\$/ 100 lbs		Min	Max	
Dressed weight (lbs)	158	170	-7.1 %				Number 1	122 lbs	147.00	147.00	
								103 - 113 lbs	172.00	177.00	
								90 - 95 lbs	150.00	157.00	
							Number 2	114 lbs	166.00	166.00	
								95 - 113 lbs	180.00	185.00	
								85 - 90 lbs	137.00	165.00	
							Number 3	94 - 109 lbs	132.00	137.00	
								80 - 84 lbs	87.00	112.00	
								73 lbs	70.00	70.00	