



## Veal Supply at a Glance - Canada

For week ending June 29, 2013

Quebec Live Auction											
	2013				2012				Volume (YTD)		
	Number (head)	Price ( \$ / 100 lbs)			Number (head)	Price ( \$ / 100 lbs)			head		
Dairy Calves		Average	Min	Max		Average	Min	Max	2013	2012	% chg
Male											
Good 90 -120 lbs	538	142.00	125.00	170.00	670	186.00	170.00	205.00	21 480	23 068	-6.9 %
Good 121 - 140 lbs	131	132.00	124.00	158.00	159	182.00	165.00	207.00	5 279	4 773	10.6 %
Average 90 - 140 lbs	436	116.00	80.00	142.00	575	148.00	100.00	180.00	9 943	8 657	14.9 %
Misc. - All weights	524	39.00	5.00	80.00	449	36.00	10.00	100.00	8 901	6 214	43.2 %
Female											
Good 90 -120 lbs	69	127.00	100.00	145.00	43	163.00	120.00	195.00	2 362	2 100	12.5 %
A2 Grain fed veal calves (hide off)	1651	200.30	n/a	n/a	1470	190.30	n/a	n/a	36 506	40 665	-10.2 %
596 lbs live - (325-353 lbs hide off)											

Source: Fédération des producteurs de bovins du Québec

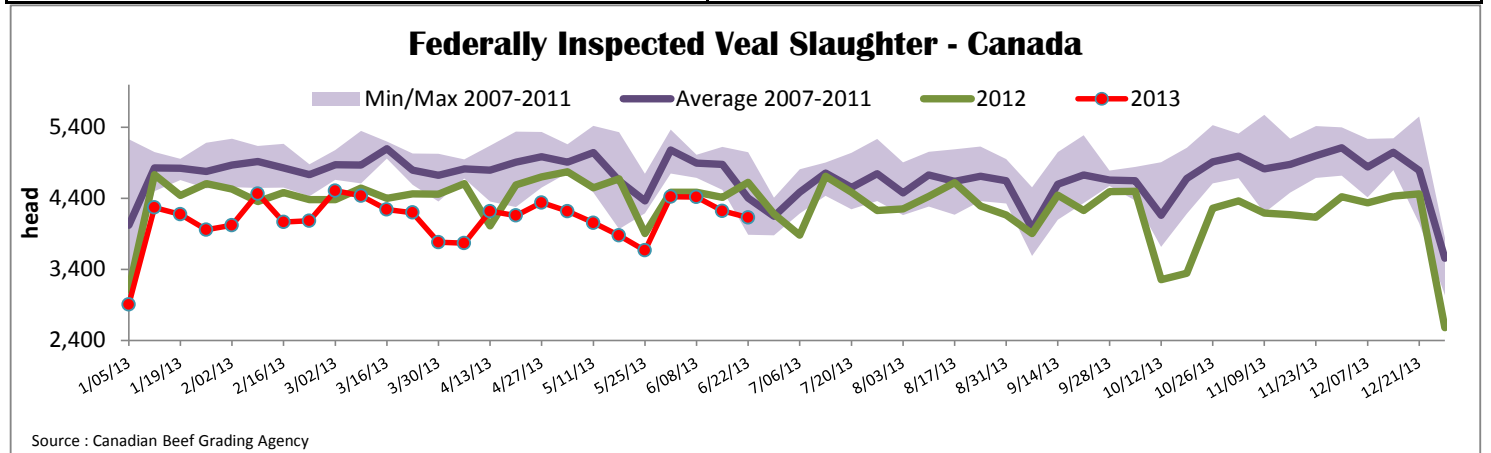
Ontario Live Auction											
	2013				2012				Volume (YTD)		
	Number (head)	Price ( \$ / 100 lbs)			Number (head)	Price ( \$ / 100 lbs)			head		
		Average	Min	Max		Average	Min	Max	2013	2012	% chg
+ 600 lbs	593	94.91	84.32	110.58	677	90.66	82.15	106.62	15 057	14 633	2.9 %
451 - 600 lbs	43	89.33	76.08	100.77	40	90.65	84.84	95.69	1 020	1 279	-20.3 %
301 - 450 lbs	19	119.64	95.95	133.47	10	99.90	83.80	114.50	864	774	11.6 %
126 - 300 lbs	113	117.45	88.32	145.90	160	145.40	99.91	189.02	3 543	3 589	-1.3 %
- 125 lbs	994	123.65	84.05	151.88	928	159.00	112.14	194.33	21 542	21 680	-0.6 %

Federally Inspected Slaughter									
	Weekly			Year to date			Carcass Weight (lbs - January - April)		
	2013	2012	% chg	2013	2012	% chg	2013	2012	% chg
Ontario	761	617	23.3 %	15 557	16 659	-6.6 %	369	359	2.7 %
Quebec / Atlantic	3 173	3 565	-11.0 %	91 029	98 282	-7.4 %	304	300	1.4 %
<b>Canada</b>	<b>3 934</b>	<b>4 182</b>	<b>-5.9 %</b>	<b>106 586</b>	<b>114 941</b>	<b>-7.3 %</b>	<b>311</b>	<b>307</b>	<b>1.2 %</b>

Source: Canadian Beef Grading Agency

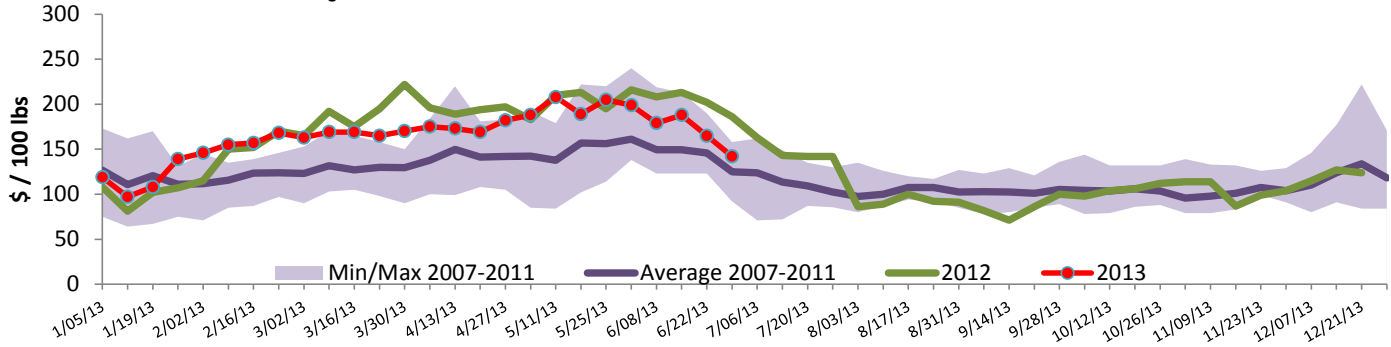
Exports				Imports			
Total veal (tonnes)	Jan. 1 - May 31, 2013			Total veal (tonnes)	Jan. 1 - June 29, 2013		
	2013	2012	% chg		2013	2012	% chg
United States	705	1 171	-39.8 %	United States	439	580	-24.4 %
United Arab Emirates	57	43	32.9 %	Australia	419	555	-24.5 %
Russia	15	26	-41.3 %	New Zealand	33	22	45.7 %
Others	12	29	-58.6 %	Mexico	15	0	
<b>Total</b>	<b>789</b>	<b>1 268</b>	<b>-37.8 %</b>	<b>Total</b>	<b>905</b>	<b>1 158</b>	<b>-21.8 %</b>
Live calves (head)	Jan. 1 - April 30			For the period Jan. 1 - April 30			
	272	659		Live calves (head)	<b>2013</b>	<b>2012</b>	
					12 752	16 463	

Source: Statistics Canada



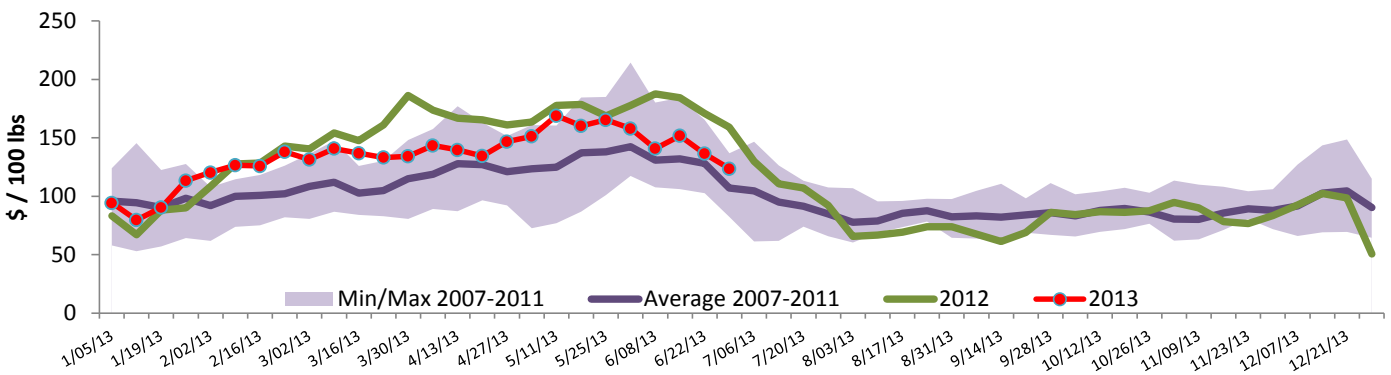


### Quebec Veal Prices - Male: Good 90-120 lbs



Source : Fédération des producteurs de bovins du Québec

### Ontario Veal Prices - 125 lbs and less



Source : Ontario Cattlemen's Association

## United States

Week ending June 29, 2013

Federally Inspected Slaughter							Northeast and North Central U.S. Wholesale Price				
	Weekly			Year to date			\$/100 lbs	Simple avg	Min	Max	
	2013	2012	% chg	2013	2012	% chg					
Milk-fed or nature *							307 Rack, Ribeye, Boneless	2 250.00	2 250.00	2 250.00	
North East	3 496	2 883	21.3 %	84 814	81 656	3.9 %	332 Loin, Trimmed 4x4	610.00	595.00	625.00	
North Central	2 654	3 485	-23.8 %	62 780	88 027	-28.7 %	1336 Leg slice, Retail	937.50	750.00	1 125.00	
<b>Total</b>	<b>6 150</b>	<b>6 368</b>	<b>-3.4 %</b>	<b>147 594</b>	<b>169 683</b>	<b>-13.0 %</b>	1312 Osso Buco, Fore Shank	955.00	815.00	1 095.00	
Other calves	6 850	7 522	-8.9 %	213 295	183 067	16.5 %	Shoulder Clod, Chuck	570.00	495.00	645.00	
<b>Total</b>	<b>13 000</b>	<b>13 890</b>	<b>-6.4 %</b>	<b>360 889</b>	<b>352 750</b>	<b>2.3 %</b>					
							Source : USDA				
Production							<b>Pennsylvania Vintage Calf Auction</b>				
Calves (million lbs)	1.9	2.2	-13.6 %	53.8	58.1	-7.4 %	Graded Holstein Bull Calves June 24, 2013				
Live weight (lbs)	250	263	-4.9 %				\$/ 100 lbs			Min	Max
Dressed weight (lbs)	147	157	-6.4 %				Number 1	95 - 115 lbs		130.00	145.00
								85 - 90 lbs		115.00	130.00
							Number 2	95 - 110 lbs		115.00	130.00
								80 - 90 lbs		90.00	110.00
							Number 3	95 - 125 lbs		60.00	80.00
								70 - 90 lbs		50.00	70.00

Prepared by : Redmeat Section, Agriculture and Agri-Food Canada

Contact : Julie Dawson

Website : [http://www.agr.gc.ca/redmeat/index\\_eng.htm](http://www.agr.gc.ca/redmeat/index_eng.htm)

613 773 0149 or Julie.Dawson@agr.gc.ca