



Veal Supply at a Glance - Canada

For week ending July 13, 2013

Quebec Live Auction											
	2013				2012				Volume (YTD)		
	Number (head)	Price (\$ / 100 lbs)			Number (head)	Price (\$ / 100 lbs)			head		
Dairy Calves		Average	Min	Max		Average	Min	Max	2013	2012	% chg
Male											
Good 90 -120 lbs	643	113.00	85.00	135.00	767	143.00	122.00	155.00	22 878	24 455	-6.4 %
Good 121 - 140 lbs	167	119.00	85.00	135.00	159	137.00	110.00	150.00	5 670	5 101	11.2 %
Average 90 - 140 lbs	533	85.00	50.00	120.00	498	115.00	70.00	140.00	10 923	9 785	11.6 %
Misc. - All weights	659	33.00	13.00	80.00	454	41.00	20.00	85.00	10 139	7 080	43.2 %
Female											
Good 90 -120 lbs	51	113.00	70.00	155.00	81	122.00	100.00	155.00	2 496	2 265	10.2 %
A2 Grain fed veal calves (hide off)	1516	200.40	n/a	n/a	1262	190.50	n/a	n/a	39 309	43 467	-9.6 %
596 lbs live - (325-353 lbs hide off)											

Source: Fédération des producteurs de bovins du Québec

Ontario Live Auction											
	2013				2012				Volume (YTD)		
	Number (head)	Price (\$ / 100 lbs)			Number (head)	Price (\$ / 100 lbs)			head		
		Average	Min	Max		Average	Min	Max	2013	2012	% chg
+ 600 lbs	633	96.60	85.20	110.27	705	89.78	81.40	99.18	16 183	15 758	2.7 %
451 - 600 lbs	50	95.92	85.93	106.86	45	96.32	81.61	111.14	1 103	1 367	-19.3 %
301 - 450 lbs	42	108.73	78.74	127.01	20	114.57	90.85	138.05	928	824	12.6 %
126 - 300 lbs	178	102.67	73.60	125.25	140	106.28	83.51	126.99	3 848	3 846	0.1 %
- 125 lbs	865	90.58	64.12	114.89	893	110.62	82.72	136.02	23 244	23 455	-0.9 %

8

Federally Inspected Slaughter									
	Weekly			Year to date			Carcass Weight (lbs - January - April)		
	2013	2012	% chg	2013	2012	% chg	2013	2012	% chg
Ontario	655	743	-11.8 %	16 846	17 911	-5.9 %	369	359	2.7 %
Quebec / Atlantic	3 602	3 968	-9.2 %	97 556	105 626	-7.6 %	304	300	1.4 %
Canada	4 257	4 711	-9.6 %	114 402	123 537	-7.4 %	311	307	1.2 %

Source : Canadian Beef Grading Agency

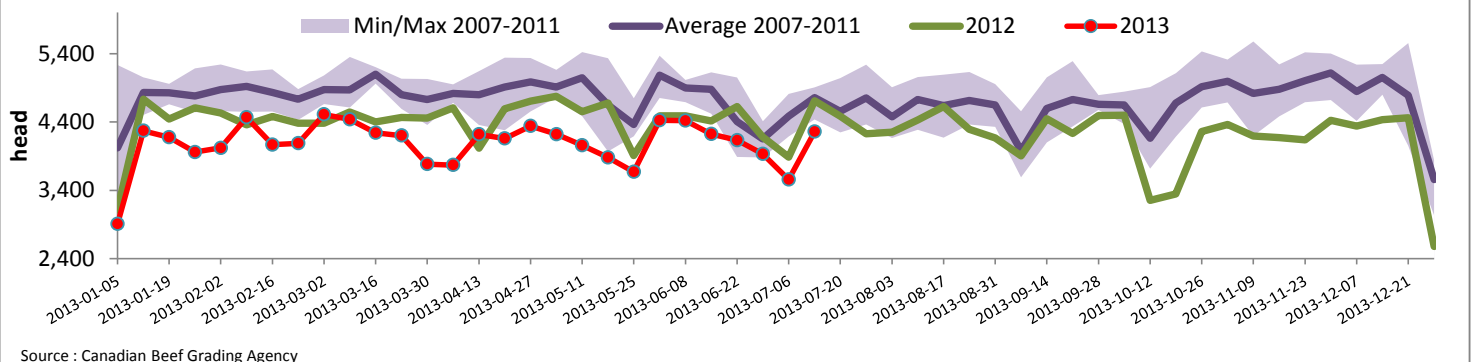
Source: CFIA

Exports				Imports			
Total veal (tonnes)	Jan. 1 - May 31, 2013			Total veal (tonnes)	Jan. 1 - July 13, 2013		
	2013	2012	% chg		2013	2012	% chg
United States	705	1 171	-39.8 %	United States	518	642	-19.3 %
United Arab Emirates	57	43	32.9 %	Australia	419	604	-30.6 %
Russia	15	26	-41.3 %	New Zealand	33	33	0.3 %
Others	12	29	-58.6 %	Mexico	15	0	
Total	789	1 268	-37.8 %	Total	985	1 279	-23.0 %
Live calves (head)	Jan. 1 - May 31			For the period Jan. 1 - May 31			
	272	753		Live calves (head)	2013	2012	
					17 413	20 009	

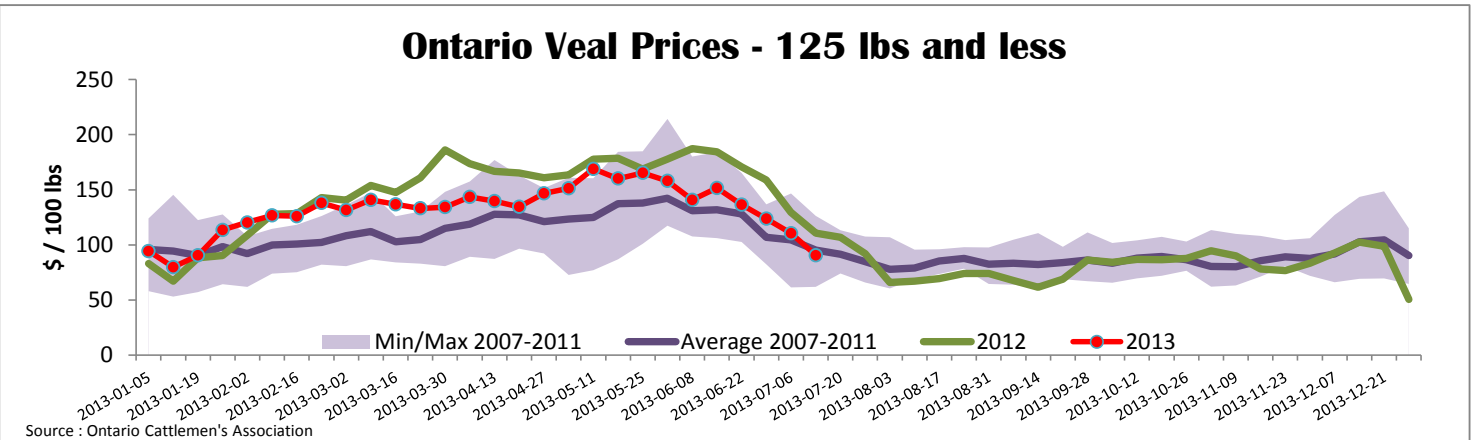
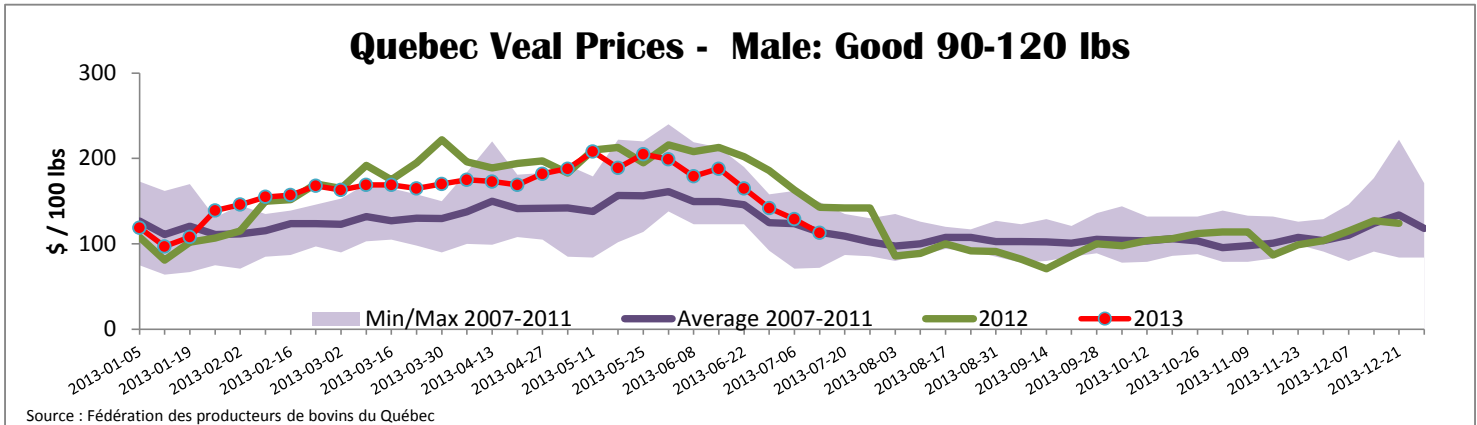
Source: Statistics Canada

Source: CFIA

Federally Inspected Veal Slaughter - Canada



Source : Canadian Beef Grading Agency



United States												
Week ending July 13, 2013												
Federally Inspected Slaughter						Northeast and North Central U.S. Wholesale Price						
	Weekly			Year to date			\$/100 lbs		Simple avg		Min	Max
	2013	2012	% chg	2013	2012	% chg						
Milk-fed or nature *							307 Rack, Ribeye, Boneless	2 250.00	2 250.00	2 250.00	2 250.00	
North East	3 235	3 329	-2.8 %	90 820	87 682	3.6 %	332 Loin, Trimmed 4x4	610.00	595.00	625.00		
North Central	2 523	2 226	13.3 %	67 515	92 448	-27.0 %	1336 Leg slice, Retail	937.50	750.00	1 125.00		
Total	5 758	5 555	3.7 %	158 335	180 130	-12.1 %	1312 Osso Buco, Foreshank	955.00	815.00	1 095.00		
Other calves	8 242	9 536	-13.6 %	230 952	200 869	15.0 %	Shoulder Clod, Chuck	570.00	495.00	645.00		
Total	14 000	15 091	-7.2 %	389 287	380 999	2.2 %	Source : USDA					
Production							Pennsylvania Vintage Calf Auction					
Calves (million lbs)	2	2.1	-4.8 %	57.6	62.1	-7.2 %	Graded Holstein Bull Calves		July 9, 2013			
Live weight (lbs)	249	231	7.8 %				\$/ 100 lbs		Min	Max		
Dressed weight (lbs)	146	138	5.8 %				Number 1	112 - 122 lbs	110.00	115.00		
Northeast and North Central (Veal Carcass, Special fed * (Hide off, 255-315 lbs)) * Special fed : milk fed, nature									\$/ 100 lbs	Average	Min	Max
										361.21	332.00	370.00
							Number 2	84 - 114 lbs	92.00	101.00		
							Number 3	83 - 108 lbs	65.00	80.00		
								74 lbs	30.00	30.00		