



## Veal Supply at a Glance - Canada

For week ending July 20, 2013

Quebec Live Auction											
	2013				2012				Volume (YTD)		
	Number (head)	Price ( \$ / 100 lbs)			Number (head)	Price ( \$ / 100 lbs)			head		
Dairy Calves		Average	Min	Max		Average	Min	Max	2013	2012	% chg
Male											
Good 90 -120 lbs	848	116.00	92.00	132.00	748	142.00	100.00	165.00	23 726	25 203	-5.9 %
Good 121 - 140 lbs	155	117.00	95.00	135.00	192	138.00	110.00	165.00	5 825	5 293	10.1 %
Average 90 - 140 lbs	427	80.00	48.00	112.00	533	111.00	70.00	142.00	11 350	10 318	10.0 %
Misc. - All weights	708	29.00	11.00	80.00	567	40.00	10.00	85.00	10 847	7 647	41.8 %
Female											
Good 90 -120 lbs	103	113.00	90.00	150.00	93	133.00	95.00	165.00	2 599	2 358	10.2 %
A2 Grain fed veal calves (hide off)	1383	200.60	n/a	n/a	1368	190.70	n/a	n/a	40 692	44 835	-9.2 %
596 lbs live - (325-353 lbs hide off)											

Source: Fédération des producteurs de bovins du Québec

Ontario Live Auction											
	2013				2012				Volume (YTD)		
	Number (head)	Price ( \$ / 100 lbs)			Number (head)	Price ( \$ / 100 lbs)			head		
		Average	Min	Max		Average	Min	Max	2013	2012	% chg
+ 600 lbs	418	101.54	90.93	117.15	546	94.50	84.29	108.32	16 601	16 304	1.8 %
451 - 600 lbs	58	101.84	87.76	111.86	58	95.35	83.21	110.11	1 161	1 425	-18.5 %
301 - 450 lbs	19	95.61	78.11	115.94	27	108.21	88.15	125.74	947	851	11.3 %
126 - 300 lbs	112	90.83	70.10	111.52	157	101.67	76.19	123.91	3 960	4 003	-1.1 %
- 125 lbs	753	93.54	74.72	113.23	878	106.92	74.54	131.70	23 997	24 333	-1.4 %

Source: Ontario Cattlemen's Association

Federally Inspected Slaughter									
	Weekly			Year to date			Carcass Weight (lbs - January - April)		
	2013	2012	% chg	2013	2012	% chg	2013	2012	% chg
Ontario	563	617	-8.8 %	17 409	18 528	-6.0 %	369	359	2.7 %
Quebec / Atlantic	3 771	3 869	-2.5 %	101 327	109 495	-7.5 %	304	300	1.4 %
<b>Canada</b>	<b>4 334</b>	<b>4 486</b>	<b>-3.4 %</b>	<b>118 736</b>	<b>128 023</b>	<b>-7.3 %</b>	<b>311</b>	<b>307</b>	<b>1.2 %</b>

Source: Canadian Beef Grading Agency

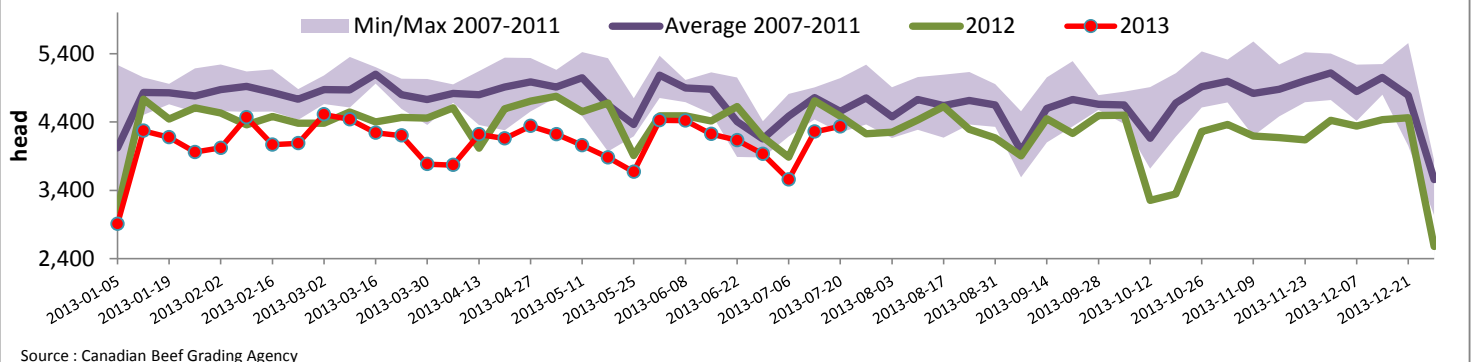
Source: CFIA

Exports				Imports			
Total veal (tonnes)	Jan. 1 - May 31, 2013			Total veal (tonnes)	Jan. 1 - July 20, 2013		
	2013	2012	% chg		2013	2012	% chg
United States	705	1 171	-39.8 %	United States	532	689	-22.8 %
United Arab Emirates	57	43	32.9 %	Australia	438	604	-27.5 %
Russia	15	26	-41.3 %	New Zealand	33	33	0.3 %
Others	12	29	-58.6 %	Mexico	15	0	
<b>Total</b>	<b>789</b>	<b>1 268</b>	<b>-37.8 %</b>	<b>Total</b>	<b>1 017</b>	<b>1 325</b>	<b>-23.3 %</b>
Live calves (head)	Jan. 1 - May 31			For the period Jan. 1 - May 31			
	272	753		Live calves (head)	2013	2012	
					17 413	20 009	

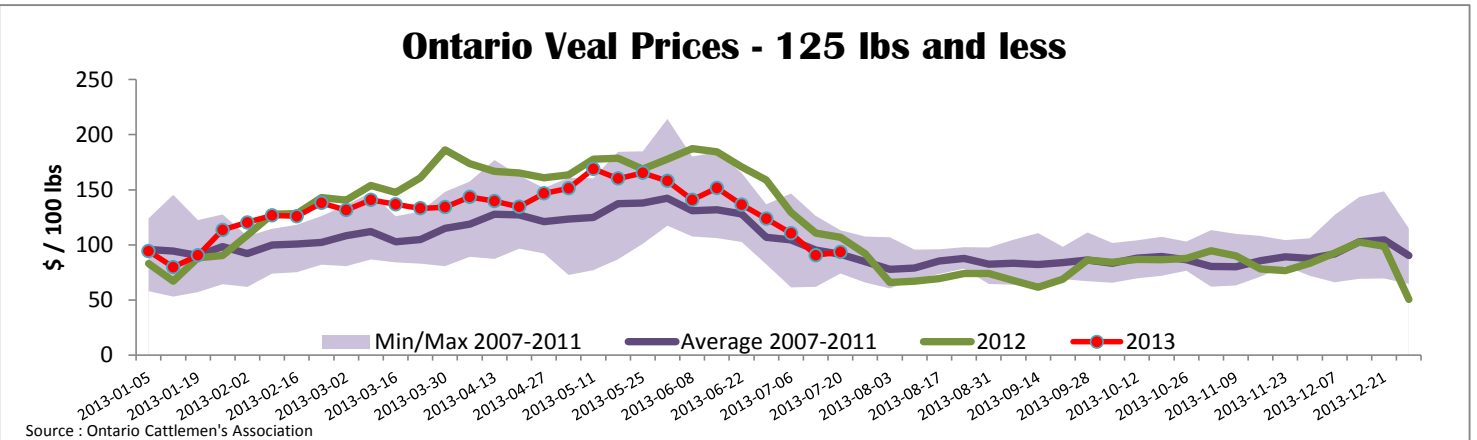
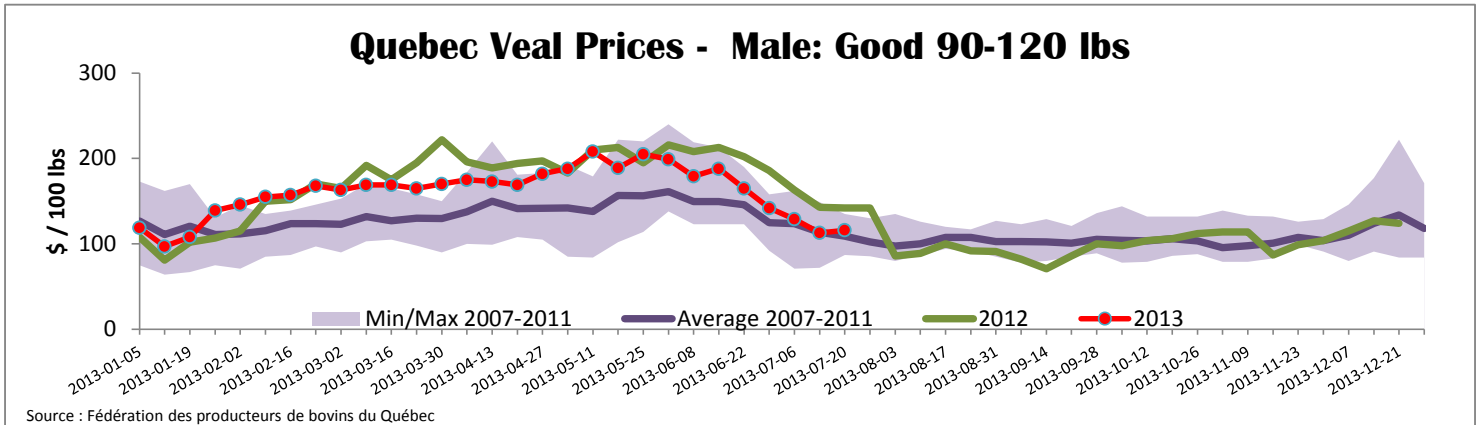
Source: Statistics Canada

Source: CFIA

## Federally Inspected Veal Slaughter - Canada



Source: Canadian Beef Grading Agency



<b>United States</b>											
Week ending July 20, 2013											
Federally Inspected Slaughter						Northeast and North Central U.S. Wholesale Price					
	Weekly			Year to date			\$/100 lbs		Simple avg	Min	Max
	2013	2012	% chg	2013	2012	% chg					
Milk-fed or nature *							307 Rack, Ribeye, Boneless	2 250.00	2 250.00	2 250.00	
North East	3 445	3 042	13.2 %	94 265	90 724	3.9 %	332 Loin, Trimmed 4x4	610.00	595.00	625.00	
North Central	2 573	2 192	17.4 %	70 088	94 640	-25.9 %	1336 Leg slice, Retail	937.50	750.00	1 125.00	
<b>Total</b>	<b>6 018</b>	<b>5 234</b>	<b>15.0 %</b>	<b>164 353</b>	<b>185 364</b>	<b>-11.3 %</b>	1312 Osso Buco, Foreshank	955.00	815.00	1 095.00	
Other calves	7 982	10 171	-21.5 %	240 339	211 043	13.9 %	Shoulder Clod, Chuck	570.00	495.00	645.00	
<b>Total</b>	<b>14 000</b>	<b>15 405</b>	<b>-9.1 %</b>	<b>404 692</b>	<b>396 407</b>	<b>2.1 %</b>					Source : USDA
Production							Pennsylvania Vintage Calf Auction				
Calves (million lbs)	2	2.1	-4.8 %	59.7	64.2	-7.0 %	Graded Holstein Bull Calves		July 16, 2013		
Live weight (lbs)	246	250	-1.6 %				\$/ 100 lbs		Min	Max	
Dressed weight (lbs)	145	139	4.3 %								
						Source : USDA	Number 1	122 lbs	120.00	120.00	
							95 - 112 lbs	140.00	149.00		
							85 - 90 lbs	80.00	105.00		
							Number 2	95 - 116 lbs	132.00	145.00	
							90 lbs	95.00	95.00		
							Number 3	95 - 108 lbs	60.00	75.00	
							73 - 83 lbs	22.00	40.00		