



## Veal Supply at a Glance - Canada

For week ending July 27, 2013

Quebec Live Auction											
	2013				2012				Volume (YTD)		
	Number (head)	Price ( \$ / 100 lbs)			Number (head)	Price ( \$ / 100 lbs)			head		
	Average	Min	Max	Average	Min	Max	2013	2012	% chg		
Dairy Calves											
Male											
Good 90 -120 lbs							23 726	25 203	-5.9 %		
Good 121 - 140 lbs							5 825	5 293	10.1 %		
Average 90 - 140 lbs							11 350	10 318	10.0 %		
Misc. - All weights							10 847	7 647	41.8 %		
Auction markets closed due to vacation											
Female											
Good 90 -120 lbs							2 599	2 358	10.2 %		
A2 Grain fed veal calves (hide off)	1065	201.80	n/a	n/a	1403	190.40	n/a	n/a	41 757	46 238	-9.7 %
596 lbs live - (325-353 lbs hide off)											

Source: Fédération des producteurs de bovins du Québec

Ontario Live Auction											
	2013				2012				Volume (YTD)		
	Number (head)	Price ( \$ / 100 lbs)			Number (head)	Price ( \$ / 100 lbs)			head		
	Average	Min	Max	Average	Min	Max	2013	2012	% chg		
+ 600 lbs	451	99.59	89.96	111.16	689	88.73	76.77	101.74	17 052	16 993	0.3 %
451 - 600 lbs	49	98.35	85.18	107.94	54	85.26	71.80	96.92	1 210	1 479	-18.2 %
301 - 450 lbs	15	99.31	75.67	110.93	51	80.83	70.80	98.76	962	902	6.7 %
126 - 300 lbs	144	84.08	65.83	103.81	127	97.66	76.08	123.32	4 104	4 130	-0.6 %
- 125 lbs	1047	84.55	61.96	104.39	1003	92.16	71.51	110.12	25 044	25 336	-1.2 %

Source: Ontario Cattlemen's Association

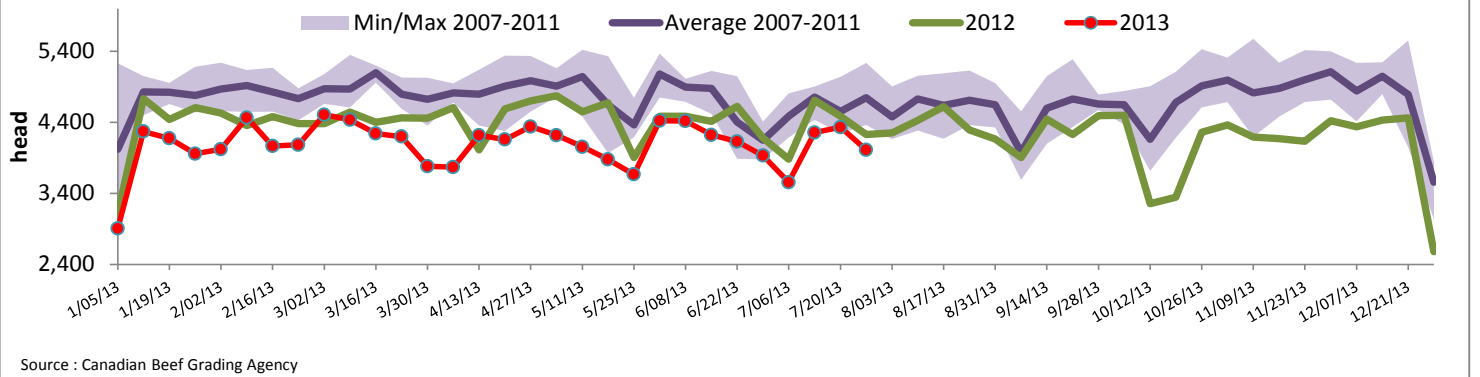
Federally Inspected Slaughter									
	Weekly			Year to date			Carcass Weight (lbs - January - June)		
	2013	2012	% chg	2013	2012	% chg	2013	2012	% chg
Ontario	529	564	-6.2 %	17 938	19 092	-6.0 %	369	360	2.3 %
Quebec / Atlantic	3 483	3 665	-5.0 %	104 810	113 160	-7.4 %	312	302	3.0 %
<b>Canada</b>	<b>4 012</b>	<b>4 229</b>	<b>-5.1 %</b>	<b>122 748</b>	<b>132 252</b>	<b>-7.2 %</b>	<b>320</b>	<b>311</b>	<b>2.9 %</b>

Source : Canadian Beef Grading Agency      Source: CFIA

Exports				Imports			
Total veal (tonnes)	Jan. 1 - May 31, 2013			Total veal (tonnes)	Jan. 1 - July 27, 2013		
	2013	2012	% chg		2013	2012	% chg
United States	705	1 171	-39.8 %	United States	566	743	-23.8 %
United Arab Emirates	57	43	32.9 %	Australia	438	604	-27.5 %
Russia	15	26	-41.3 %	New Zealand	33	33	0.3 %
Others	12	29	-58.6 %	Mexico	15	0	
<b>Total</b>	<b>789</b>	<b>1 268</b>	<b>-37.8 %</b>	<b>Total</b>	<b>1 052</b>	<b>1 379</b>	<b>-23.7 %</b>
Live calves (head)	Jan. 1 - May 31			For the period Jan. 1 - May 31			
	272	753		2013	2 012		
				17 413	20 009		

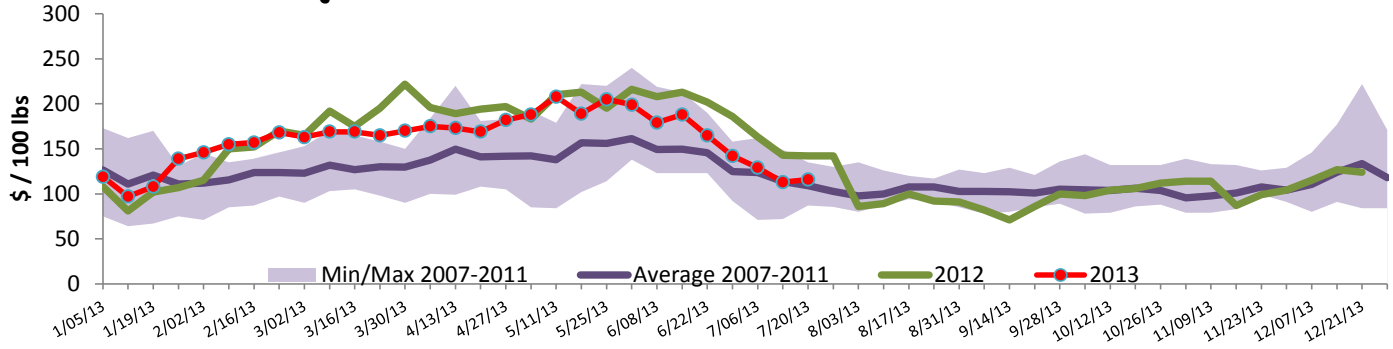
Source: Statistics Canada      Source: CFIA

### Federally Inspected Veal Slaughter - Canada



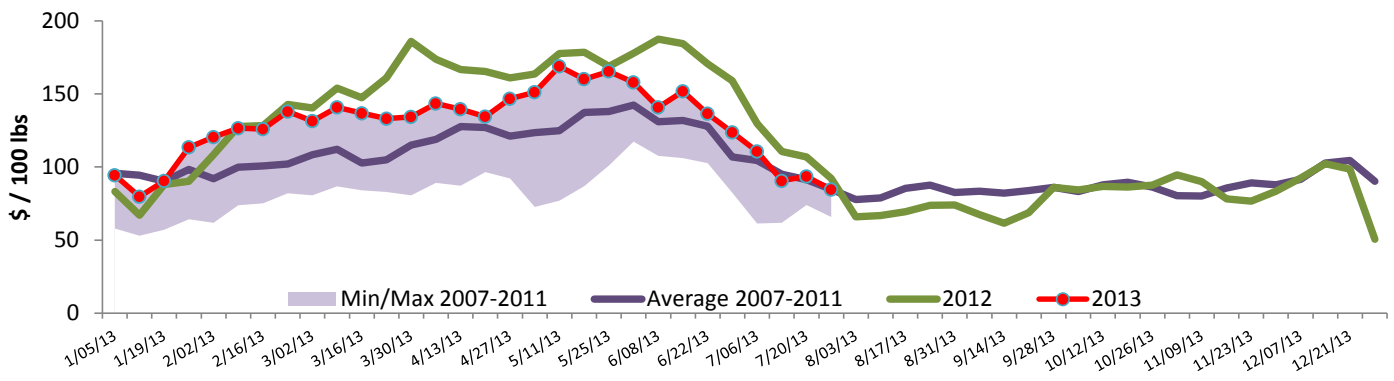


### Quebec Veal Prices - Male: Good 90-120 lbs



Source : Fédération des producteurs de bovins du Québec

### Ontario Veal Prices - 125 lbs and less



Source : Ontario Cattlemen's Association

## United States

Week ending July 27, 2013

Federally Inspected Slaughter				Northeast and North Central U.S. Wholesale Price						
	Weekly			Year to date			\$/100 lbs	Simple avg	Min	Max
	2013	2012	% chg	2013	2012	% chg				
Milk-fed or nature *							307 Rack, Ribeye, Boneless	2 250.00	2 250.00	2 250.00
North East	3 262	3 107	5.0 %	97 527	93 831	3.9 %	332 Loin, Trimmed 4x4	610.00	595.00	625.00
North Central	2 103	2 412	-12.8 %	72 191	97 052	-25.6 %	1336 Leg slice, Retail	937.50	750.00	1 125.00
<b>Total</b>	<b>5 365</b>	<b>5 519</b>	<b>-2.8 %</b>	<b>169 718</b>	<b>190 883</b>	<b>-11.1 %</b>	1312 Osso Buco, Fore Shank	955.00	815.00	1 095.00
Other calves	8 635	9 767	-11.6 %	250 635	220 810	13.5 %	Shoulder Clod, Chuck	570.00	495.00	645.00
<b>Total</b>	<b>14 000</b>	<b>15 286</b>	<b>-8.4 %</b>	<b>420 353</b>	<b>411 693</b>	<b>2.1 %</b>				
							Source : USDA			
Production							<b>Pennsylvania Vintage Calf Auction</b>			
Calves (million lbs)	1.9	2.1	-9.5 %	61.6	66.3	-7.1 %	July 23, 2013			
Live weight (lbs)	238	235	1.3 %				\$/ 100 lbs		Min	Max
Dressed weight (lbs)	140	139	0.7 %							
							Source : USDA			
<b>Northeast and North Central</b>			\$/ 100 lbs	Average	Min	Max				
(Veal Carcass, Special fed * (Hide off, 255-315 lbs))				365.12	350.00	370.00				
* Special fed : milk fed, nature										
							Number 1	111 - 123 lbs	112.00	122.00
								95 - 103 lbs	120.00	127.00
								90 lbs	87.00	87.00
							Number 2	102 - 114 lbs	120.00	124.00
								95 lbs	95.00	110.00
								84 - 90 lbs	35.00	60.00
							Number 3	94 - 110 lbs	35.00	50.00
								74 - 83 lbs	15.00	25.00