



Veal Supply at a Glance - Canada

For week ending August 3, 2013

Quebec Live Auction											
	2013				2012				Volume (YTD)		
	Number (head)	Price (\$ / 100 lbs)			Number (head)	Price (\$ / 100 lbs)			head		
Dairy Calves	Average	Min	Max	Average	Min	Max	2013	2012	% chg		
Male											
Good 90 -120 lbs	1135	83.00	65.00	100.00	1006	86.00	70.00	102.00	24 861	26 209	-5.1 %
Good 121 - 140 lbs	414	89.00	60.00	110.00	327	88.00	70.00	105.00	6 239	5 620	11.0 %
Average 90 - 140 lbs	879	62.00	40.00	80.00	928	66.00	40.00	85.00	12 229	11 246	8.7 %
Misc. - All weights	994	27.00	15.00	50.00	1015	23.00	10.00	40.00	11 841	8 662	36.7 %
Female											
Good 90 -120 lbs	133	90.00	60.00	120.00	92	84.00	50.00	117.00	2 732	2 450	11.5 %
A2 Grain fed veal calves (hide off)	1227	207.50	n/a	n/a	1322	190.60	n/a	n/a	42 984	47 560	-9.6 %
596 lbs live - (325-353 lbs hide off)											

Source: Fédération des producteurs de bovins du Québec

Ontario Live Auction											
	2013				2012				Volume (YTD)		
	Number (head)	Price (\$ / 100 lbs)			Number (head)	Price (\$ / 100 lbs)			head		
	Average	Min	Max	Average	Min	Max	2013	2012	% chg		
+ 600 lbs	494	103.94	91.82	116.37	532	88.05	77.20	103.94	17 546	17 525	0.1 %
451 - 600 lbs	40	97.13	80.70	104.58	51	84.95	75.73	93.61	1 250	1 530	-18.3 %
301 - 450 lbs	28	102.27	89.30	118.52	46	99.92	73.79	122.12	990	948	4.4 %
126 - 300 lbs	146	82.20	63.70	101.51	126	77.43	48.70	95.27	4 250	4 256	-0.1 %
- 125 lbs	951	71.84	46.89	92.53	824	65.84	42.69	83.98	25 995	26 160	-0.6 %

Source: Ontario Cattlemen's Association

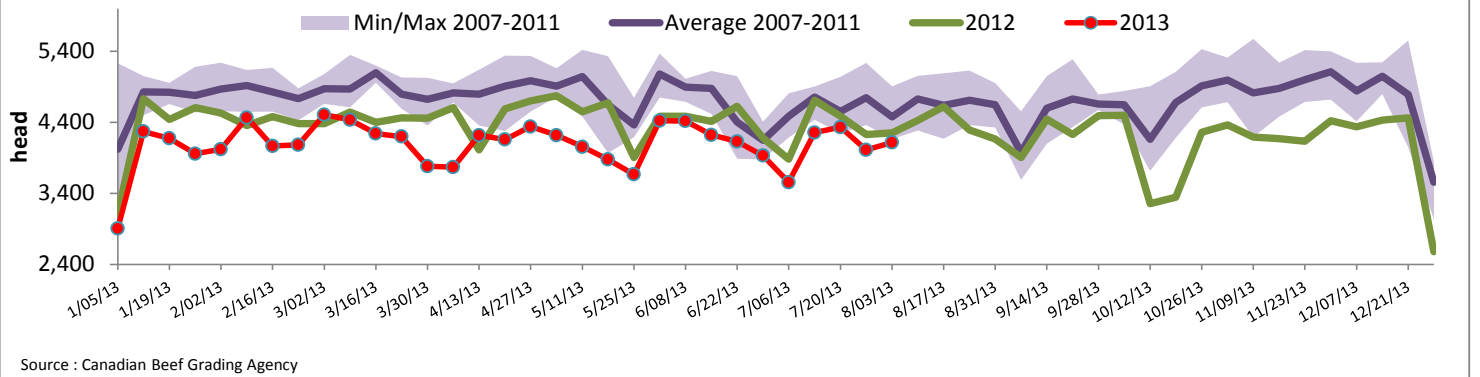
Federally Inspected Slaughter									
	Weekly			Year to date			Carcass Weight (lbs - January - June)		
	2013	2012	% chg	2013	2012	% chg	2013	2012	% chg
Ontario	506	575	-12.0 %	18 444	19 667	-6.2 %	369	360	2.3 %
Quebec / Atlantic	3 613	3 678	-1.8 %	108 423	116 838	-7.2 %	312	302	3.0 %
Canada	4 119	4 253	-3.2 %	126 867	136 505	-7.1 %	320	311	2.9 %

Source : Canadian Beef Grading Agency Source: CFIA

Exports				Imports			
Total veal (tonnes)	Jan. 1 - June 30, 2013			Total veal (tonnes)	Jan. 1 - Aug. 3, 2013		
	2013	2012	% chg		2013	2012	% chg
United States	850	1 404	-39.4 %	United States	578	761	-24.0 %
United Arab Emirates	60	49	21.0 %	Australia	438	656	-33.3 %
Russia	15	30	-50.5 %	New Zealand	33	33	0.3 %
Others	14	30	-53.3 %	Mexico	15	0	
Total	939	1 513	-38.0 %	Total	1 064	1 450	-26.6 %
Live calves (head)	Jan. 1 - June 30			For the period Jan. 1 - May 31			
	35	1378		2013	2 012		
				17 413	20 009		

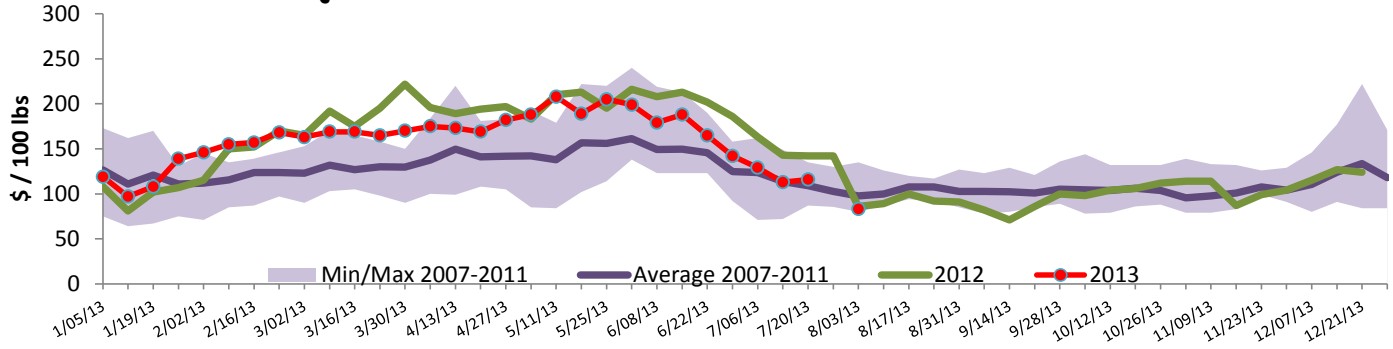
Source: Statistics Canada Source: CFIA

Federally Inspected Veal Slaughter - Canada



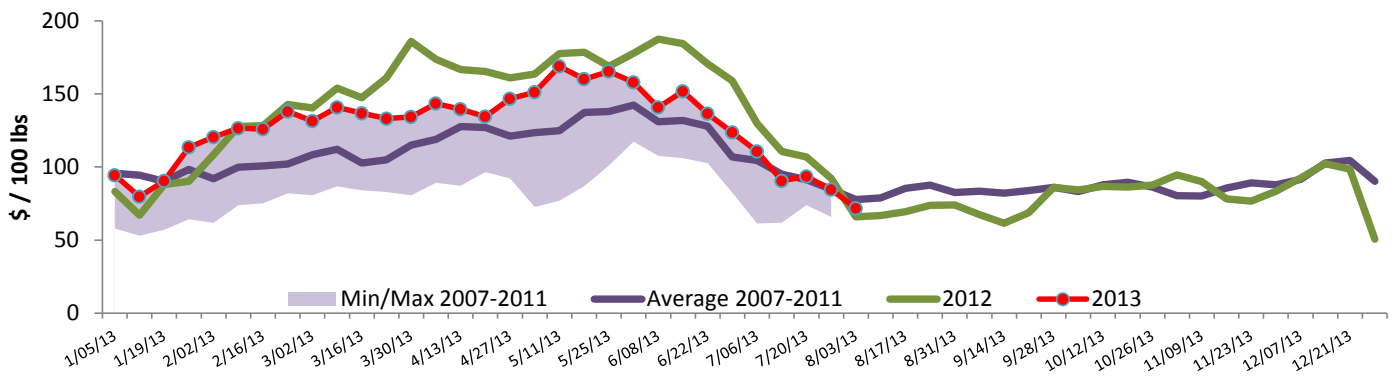


Quebec Veal Prices - Male: Good 90-120 lbs



Source : Fédération des producteurs de bovins du Québec

Ontario Veal Prices - 125 lbs and less



Source : Ontario Cattlemen's Association

United States

Week ending August 3, 2013

Federally Inspected Slaughter				Northeast and North Central U.S. Wholesale Price							
	Weekly			Year to date			\$/100 lbs	Simple avg	Min	Max	
	2013	2012	% chg	2013	2012	% chg					
Milk-fed or nature *							307 Rack, Ribeye, Boneless	2 250.00	2 250.00	2 250.00	
North East	3 422	2 961	15.6 %	100 949	96 792	4.3 %	332 Loin, Trimmed 4x4	610.00	595.00	625.00	
North Central	2 591	2 519	2.9 %	74 782	99 571	-24.9 %	1336 Leg slice, Retail	937.50	750.00	1 125.00	
Total	6 013	5 480	9.7 %	175 731	196 363	-10.5 %	1312 Osso Buco, Fore Shank	957.50	820.00	1 095.00	
Other calves	8 987	10 118	-11.2 %	261 695	230 928	13.3 %	Shoulder Clod, Chuck	570.00	495.00	645.00	
Total	15 000	15 598	-3.8 %	437 426	427 291	2.4 %					
							Source : USDA				
Production							Pennsylvania Vintage Calf Auction				
Calves (million lbs)	2.0	2.0	0.0 %	63.7	68.3	-6.7 %	July 30, 2013				
Live weight (lbs)	232	220	5.5 %				\$/ 100 lbs Min Max				
Dressed weight (lbs)	136	130	4.6 %								
							Number 1	102 - 111 lbs		100.00	103.00
								90 - 95 lbs		72.00	87.00
								124 lbs		90.00	90.00
							Number 2	103 - 111 lbs		80.00	89.00
								85 - 95 lbs		51.00	78.00
								75 lbs		22.00	22.00
							Number 3	94 - 109 lbs		37.00	50.00
								74 - 83 lbs		20.00	32.00

Prepared by : Redmeat Section, Agriculture and Agri-Food Canada

Contact : Julie Dawson

Website : http://www.agr.gc.ca/redmeat/index_eng.htm

613 773 0149 or Julie.Dawson@agr.gc.ca