



Veal Supply at a Glance - Canada

For week ending August 10, 2013

Quebec Live Auction											
	2013				2012				Volume (YTD)		
	Number (head)	Price (\$ / 100 lbs)			Number (head)	Price (\$ / 100 lbs)			head		
Dairy Calves		Average	Min	Max		Average	Min	Max	2013	2012	% chg
Male											
Good 90 -120 lbs	912	100.00	90.00	115.00	819	89.00	77.00	100.00	25 773	27 028	-4.6 %
Good 121 - 140 lbs	192	101.00	90.00	118.00	183	85.00	70.00	105.00	6 431	5 803	10.8 %
Average 90 - 140 lbs	399	71.00	40.00	92.00	405	67.00	5.00	80.00	12 628	11 651	8.4 %
Misc. - All weights	468	28.00	15.00	50.00	468	26.00	15.00	45.00	12 309	9 130	34.8 %
Female											
Good 90 -120 lbs	89	93.00	70.00	115.00	71	90.00	70.00	110.00	2 821	2 521	11.9 %
A2 Grain fed veal calves (hide off)	1243	210.60	n/a	n/a	1152	191.00	n/a	n/a	44 227	48 712	-9.2 %
596 lbs live - (325-353 lbs hide off)											

Source: Fédération des producteurs de bovins du Québec

Ontario Live Auction											
	2013				2012				Volume (YTD)		
	Number (head)	Price (\$ / 100 lbs)			Number (head)	Price (\$ / 100 lbs)			head		
		Average	Min	Max		Average	Min	Max	2013	2012	% chg
+ 600 lbs	445	107.65	93.72	115.95	538	88.24	79.99	99.93	17 991	18 063	-0.4 %
451 - 600 lbs	33	101.88	90.18	112.39	44	84.66	74.26	90.82	1 283	1 574	-18.5 %
301 - 450 lbs	14	87.59	66.45	106.81	27	84.26	63.72	104.56	1 004	975	3.0 %
126 - 300 lbs	120	84.15	58.67	110.79	97	72.89	58.04	90.89	4 370	4 353	0.4 %
- 125 lbs	934	77.96	51.93	103.13	782	66.90	43.09	86.71	26 929	26 942	0.0 %

Source: Ontario Cattlemen's Association

Federally Inspected Slaughter									
	Weekly			Year to date			Carcass Weight (lbs - January - June)		
	2013	2012	% chg	2013	2012	% chg	2013	2012	% chg
Ontario	437	617	-29.2 %	18 881	20 284	-6.9 %	369	360	2.3 %
Quebec / Atlantic	3 385	3 812	-11.2 %	111 808	120 650	-7.3 %	312	302	3.0 %
Canada	3 822	4 429	-13.7 %	130 689	140 934	-7.3 %	320	311	2.9 %

Source : Canadian Beef Grading Agency

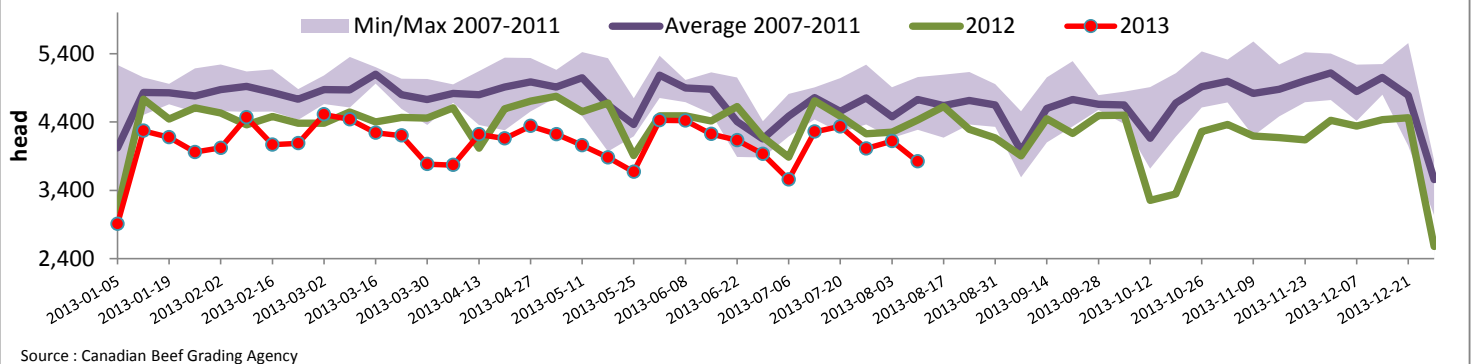
Source: CFIA

Exports				Imports			
Total veal (tonnes)	Jan. 1 - June 30, 2013			Total veal (tonnes)	Jan. 1 - Aug. 10, 2013		
	2013	2012	% chg		2013	2012	% chg
United States	850	1 404	-39.4 %	United States	597	769	-22.3 %
United Arab Emirates	60	49	21.0 %	Australia	473	656	-27.9 %
Russia	15	30	-50.5 %	New Zealand	33	33	0.3 %
Others	14	30	-53.3 %	Mexico	15	0	
Total	939	1 513	-38.0 %	Total	1 118	1 457	-23.3 %
Live calves (head)	Jan. 1 - June 30			For the period Jan. 1 - May 31			
	35	1378		Live calves (head)	2013	2012	
					17 413	20 009	

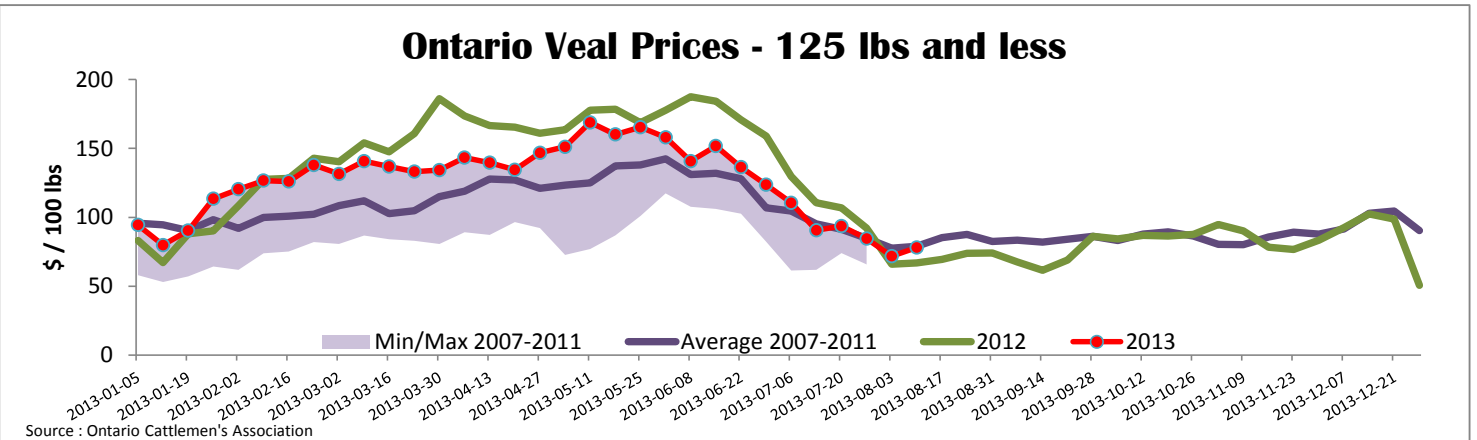
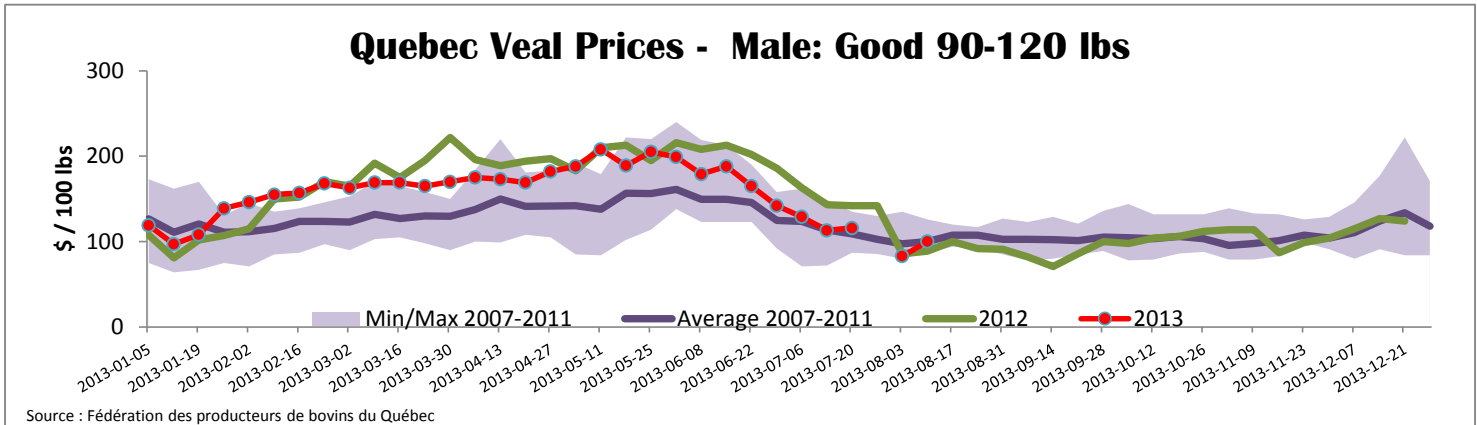
Source: Statistics Canada

Source: CFIA

Federally Inspected Veal Slaughter - Canada



Source : Canadian Beef Grading Agency



United States											
Week ending August 10, 2013											
Federally Inspected Slaughter						Northeast and North Central U.S. Wholesale Price					
	Weekly			Year to date			\$/100 lbs	Simple avg	Min	Max	
	2013	2012	% chg	2013	2012	% chg					
Milk-fed or nature *							307 Rack, Ribeye, Boneless	2 350.00	2 350.00	2 350.00	
North East	3 367	3 249	3.6 %	104 316	100 041	4.3 %	332 Loin, Trimmed 4x4	612.50	595.00	630.00	
North Central	2 541	1 811	40.3 %	77 323	101 382	-23.7 %	1336 Leg slice, Retail	937.50	750.00	1 125.00	
Total	5 908	5 060	16.8 %	181 639	201 423	-9.8 %	1312 Osso Buco, Foreshank	957.50	820.00	1 095.00	
Other calves	9 092	10 874	-16.4 %	270 787	241 802	12.0 %	Shoulder Clod, Chuck	570.00	495.00	645.00	
Total	15 000	15 934	-5.9 %	452 426	443 225	2.1 %					
							Source : USDA				
Production							Pennsylvania Vintage Calf Auction				
Calves (million lbs)	2.0	2.2	-9.1 %	65.9	70.5	-6.5 %	Graded Holstein Bull Calves		August 6, 2013		
Live weight (lbs)	228	238	-4.2 %				\$/ 100 lbs	Min	Max		
Dressed weight (lbs)	133	140	-5.0 %								
							Source : USDA				
Northeast and North Central							\$/ 100 lbs	Average	Min	Max	
(Veal Carcass, Special fed * (Hide off, 255-315 lbs))							365.56	350.00	372.00		
* Special fed : milk fed, nature											
							Number 1	90 - 119 lbs	107.00	124.00	
							Number 2	90 - 112 lbs 83 lbs	102.00 60.00	121.00 60.00	
							Number 3	92 - 107 lbs 74 - 92 lbs	37.00 32.00	50.00 45.00	