



Veal Supply at a Glance - Canada

For week ending August 17, 2013

| Quebec Live Auction | | | | | | | | | | | |
|---------------------------------------|---------------|-----------------------|-------|--------|---------------|-----------------------|-------|--------|--------------|--------|--------|
| | 2013 | | | | 2012 | | | | Volume (YTD) | | |
| | Number (head) | Price (\$ / 100 lbs) | | | Number (head) | Price (\$ / 100 lbs) | | | head | | |
| Dairy Calves | | Average | Min | Max | | Average | Min | Max | 2013 | 2012 | % chg |
| Male | | | | | | | | | | | |
| Good 90 -120 lbs | 880 | 100.00 | 87.00 | 116.00 | 912 | 87.00 | 80.00 | 95.00 | 26 653 | 27 940 | -4.6 % |
| Good 121 - 140 lbs | 219 | 107.00 | 90.00 | 125.00 | 130 | 88.00 | 79.00 | 112.00 | 6 650 | 5 933 | 12.1 % |
| Average 90 - 140 lbs | 481 | 72.00 | 40.00 | 95.00 | 390 | 68.00 | 50.00 | 80.00 | 13 109 | 12 041 | 8.9 % |
| Misc. - All weights | 473 | 28.00 | 15.00 | 50.00 | 441 | 28.00 | 15.00 | 50.00 | 12 782 | 9 571 | 33.5 % |
| Female | | | | | | | | | | | |
| Good 90 -120 lbs | 81 | 97.00 | 70.00 | 122.00 | 53 | 85.00 | 60.00 | 115.00 | 2 902 | 2 574 | 12.7 % |
| A2 Grain fed veal calves (hide off) | 1179 | 215.00 | n/a | n/a | 1141 | 191.20 | n/a | n/a | 45 406 | 49 853 | -8.9 % |
| 596 lbs live - (325-353 lbs hide off) | | | | | | | | | | | |

Source: Fédération des producteurs de bovins du Québec

| Ontario Live Auction | | | | | | | | | | | |
|----------------------|---------------|-----------------------|--------|--------|---------------|-----------------------|-------|--------|--------------|--------|---------|
| | 2013 | | | | 2012 | | | | Volume (YTD) | | |
| | Number (head) | Price (\$ / 100 lbs) | | | Number (head) | Price (\$ / 100 lbs) | | | head | | |
| | | Average | Min | Max | | Average | Min | Max | 2013 | 2012 | % chg |
| + 600 lbs | 620 | 105.22 | 91.84 | 120.04 | 603 | 89.35 | 79.69 | 101.45 | 18 611 | 18 666 | -0.3 % |
| 451 - 600 lbs | 32 | 96.06 | 82.78 | 105.97 | 56 | 91.31 | 83.52 | 98.85 | 1 315 | 1 630 | -19.3 % |
| 301 - 450 lbs | 23 | 135.87 | 103.76 | 166.63 | 19 | 73.09 | 59.16 | 91.79 | 1 027 | 994 | 3.3 % |
| 126 - 300 lbs | 150 | 93.50 | 67.31 | 122.73 | 150 | 72.61 | 56.93 | 88.94 | 4 520 | 4 503 | 0.4 % |
| - 125 lbs | 943 | 77.13 | 50.08 | 97.78 | 801 | 69.40 | 43.85 | 89.43 | 27 872 | 27 743 | 0.5 % |

Source: Ontario Cattlemen's Association

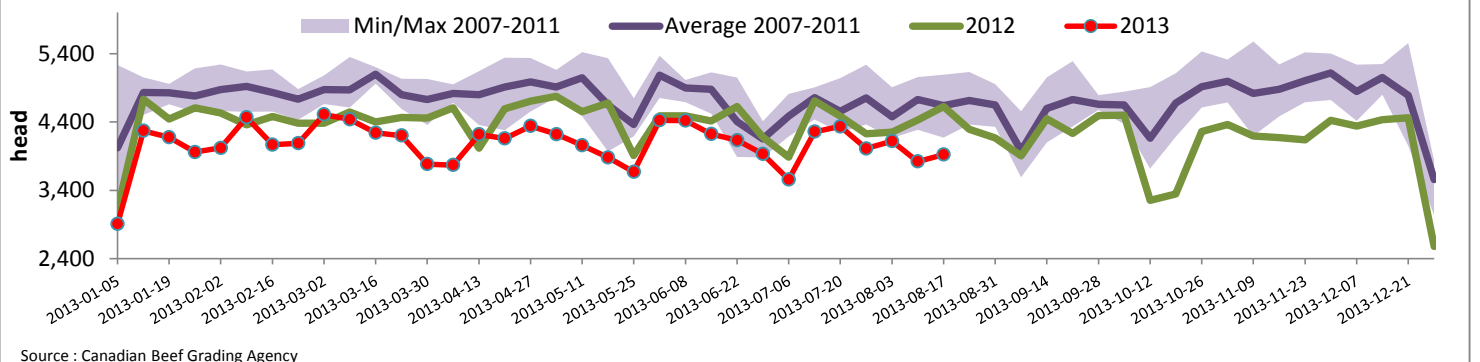
| Federally Inspected Slaughter | | | | | | | | | |
|-------------------------------|--------------|--------------|----------------|----------------|----------------|---------------|---------------------------------------|------------|--------------|
| | Weekly | | | Year to date | | | Carcass Weight (lbs - January - June) | | |
| | 2013 | 2012 | % chg | 2013 | 2012 | % chg | 2013 | 2012 | % chg |
| Ontario | 491 | 635 | -22.7 % | 19 372 | 20 919 | -7.4 % | 369 | 360 | 2.3 % |
| Quebec / Atlantic | 3 434 | 3 989 | -13.9 % | 115 242 | 124 639 | -7.5 % | 312 | 302 | 3.0 % |
| Canada | 3 925 | 4 624 | -15.1 % | 134 614 | 145 558 | -7.5 % | 320 | 311 | 2.9 % |

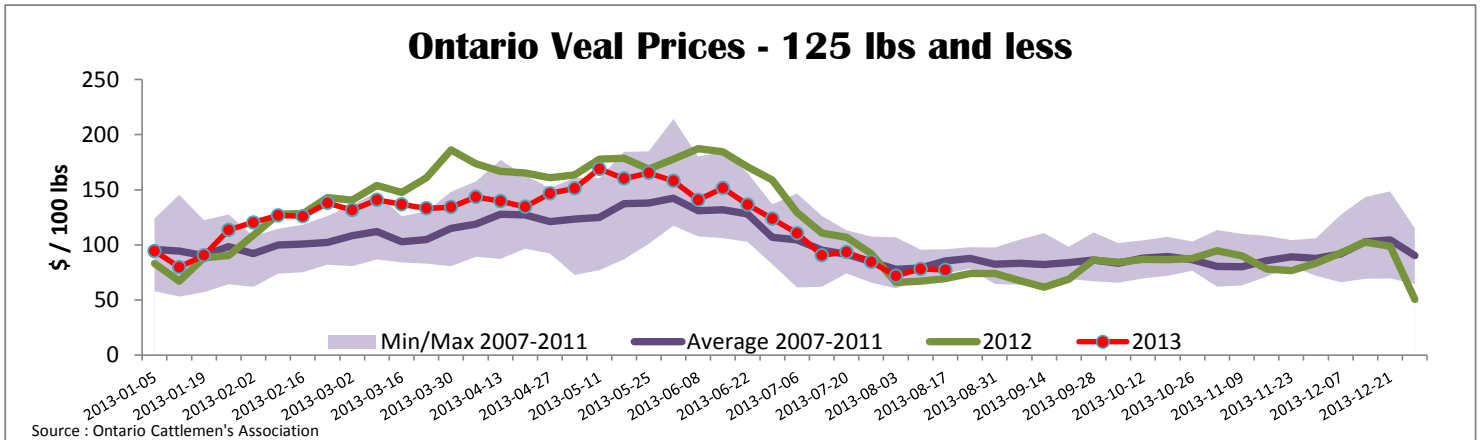
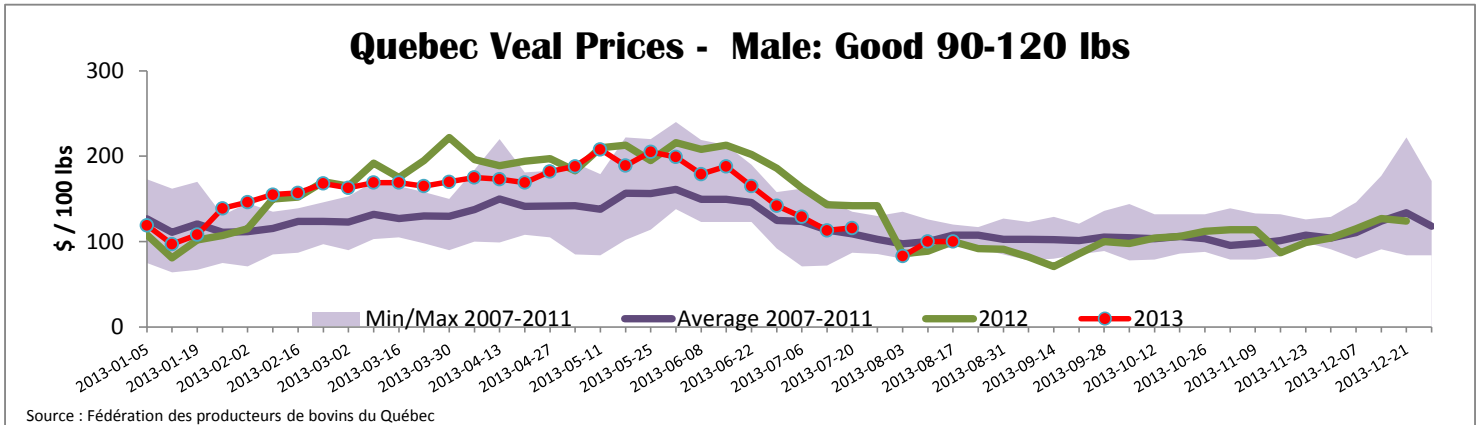
Source: Canadian Beef Grading Agency Source: CFIA

| Exports | | | | Imports | | | | | |
|----------------------|------------------------|------------|----------------|--------------|-------|--------------|----------------|--------------|-------|
| | Jan. 1 - June 30, 2013 | 2013 | | 2012 | | 2013 | | 2012 | |
| | | tonnes | % chg | tonnes | % chg | tonnes | % chg | tonnes | % chg |
| Total veal | | 939 | -38.0 % | 1 513 | | 1 180 | -23.3 % | 1 538 | |
| United States | | 850 | -39.4 % | 1 404 | | 597 | -25.6 % | 801 | |
| United Arab Emirates | | 60 | 21.0 % | 49 | | 525 | -25.4 % | 704 | |
| Russia | | 15 | -50.5 % | 30 | | 43 | 31.1 % | 33 | |
| Others | | 14 | -53.3 % | 30 | | 15 | 0 | 0 | |
| Total | | 939 | -38.0 % | 1 513 | | 1 180 | -23.3 % | 1 538 | |
| Live calves (head) | Jan. 1 - June 30 | 35 | | 1378 | | 17 413 | | 20 009 | |

Source: Statistics Canada Source: CFIA

Federally Inspected Veal Slaughter - Canada





| United States | | | | | | | | | | | |
|---|---------------|---------------|---------------|----------------|----------------|--|-----------------------------------|--------------|-----------------|----------|---------------|
| Week ending August 17, 2013 | | | | | | | | | | | |
| Federally Inspected Slaughter | | | | | | Northeast and North Central U.S. Wholesale Price | | | | | |
| | Weekly | | | Year to date | | | \$/100 lbs | | Simple avg | Min | Max |
| | 2013 | 2012 | % chg | 2013 | 2012 | % chg | | | | | |
| Milk-fed or nature * | | | | | | | 307 Rack, Ribeye, Boneless | 2 350.00 | 2 350.00 | 2 350.00 | |
| North East | 3 123 | 3 504 | -10.9 % | 107 439 | 103 545 | 3.8 % | 332 Loin, Trimmed 4x4 | 612.50 | 595.00 | 630.00 | |
| North Central | 2 758 | 2 519 | 9.5 % | 80 081 | 103 901 | -22.9 % | 1336 Leg slice, Retail | 937.50 | 750.00 | 1 125.00 | |
| Total | 5 881 | 6 023 | -2.4 % | 187 520 | 207 446 | -9.6 % | 1312 Osso Buco, Fore Shank | 958.50 | 825.00 | 1 095.00 | |
| Other calves | 9 119 | 9 595 | -5.0 % | 280 185 | 251 397 | 11.5 % | Shoulder Clod, Chuck | 570.00 | 495.00 | 645.00 | |
| Total | 15 000 | 15 618 | -4.0 % | 467 705 | 458 843 | 1.9 % | | | | | Source : USDA |
| Production | | | | | | | Pennsylvania Vintage Calf Auction | | | | |
| Calves (million lbs) | 2.0 | 2.2 | -9.1 % | 68.0 | 72.7 | -6.5 % | Graded Holstein Bull Calves | | August 13, 2013 | | |
| Live weight (lbs) | 229 | 242 | -5.4 % | | | | \$/ 100 lbs | | Min | Max | |
| Dressed weight (lbs) | 134 | 143 | -6.3 % | | | | | | | | |
| Northeast and North Central | | | | | | | | | | | |
| (Veal Carcass, Special fed * (Hide off, 255-315 lbs)) | | | | | | \$/ 100 lbs | Average | Min | Max | | |
| * Special fed : milk fed, nature | | | | | | | 367.07 | 353.00 | 372.00 | | |
| | | | | | | | Number 1 | 121 lbs | 126.00 | 126.00 | |
| | | | | | | | | 95 - 113 lbs | 150.00 | 153.00 | |
| | | | | | | | | 85 lbs | 100.00 | 100.00 | |
| | | | | | | | Number 2 | 111 lbs | 145.00 | 145.00 | |
| | | | | | | | | 95 - 102 lbs | 157.00 | 172.00 | |
| | | | | | | | | 84 - 90 lbs | 95.00 | 130.00 | |
| | | | | | | | Number 3 | 107 lbs | 100.00 | 100.00 | |
| | | | | | | | | 82 - 94 lbs | 85.00 | 90.00 | |
| | | | | | | | | 75 lbs | 42.00 | 42.00 | |