



Veal Supply at a Glance - Canada

For week ending August 31, 2013

Quebec Live Auction											
	2013				2012				Volume (YTD)		
	Number (head)	Price (\$ / 100 lbs)			Number (head)	Price (\$ / 100 lbs)			head		
Dairy Calves		Average	Min	Max		Average	Min	Max	2013	2012	% chg
Male											
Good 90 -120 lbs	861	107.00	90.00	120.00	793	91.00	80.00	106.00	28 367	29 605	-4.2 %
Good 121 - 140 lbs	166	106.00	90.00	120.00	173	93.00	85.00	105.00	7 006	6 235	12.4 %
Average 90 - 140 lbs	473	76.00	50.00	100.00	442	69.00	50.00	85.00	14 021	12 858	9.0 %
Misc. - All weights	579	26.00	10.00	50.00	441	28.00	15.00	50.00	13 846	10 404	33.1 %
Female											
Good 90 -120 lbs	76	100.00	70.00	155.00	59	93.00	65.00	130.00	3 050	2 863	6.5 %
A2 Grain fed veal calves (hide off)	1143	227.50	n/a	n/a	1297	191.20	n/a	n/a	47 808	52 444	-8.8 %
596 lbs live - (325-353 lbs hide off)											

Source: Fédération des producteurs de bovins du Québec

Ontario Live Auction											
	2013				2012				Volume (YTD)		
	Number (head)	Price (\$ / 100 lbs)			Number (head)	Price (\$ / 100 lbs)			head		
		Average	Min	Max		Average	Min	Max	2013	2012	% chg
+ 600 lbs	497	104.72	92.51	122.30	618	93.41	81.00	111.45	19 681	19 747	-0.3 %
451 - 600 lbs	45	98.99	86.44	111.53	64	90.38	78.09	99.74	1 413	1 741	-18.8 %
301 - 450 lbs	24	115.38	92.75	130.04	31	100.60	72.97	125.03	1 066	1 032	3.3 %
126 - 300 lbs	120	86.61	64.88	105.84	120	84.36	63.65	112.03	4 763	4 767	-0.1 %
- 125 lbs	888	78.30	50.03	100.37	985	74.05	51.53	94.81	29 740	29 502	0.8 %

Source: Ontario Cattlemen's Association

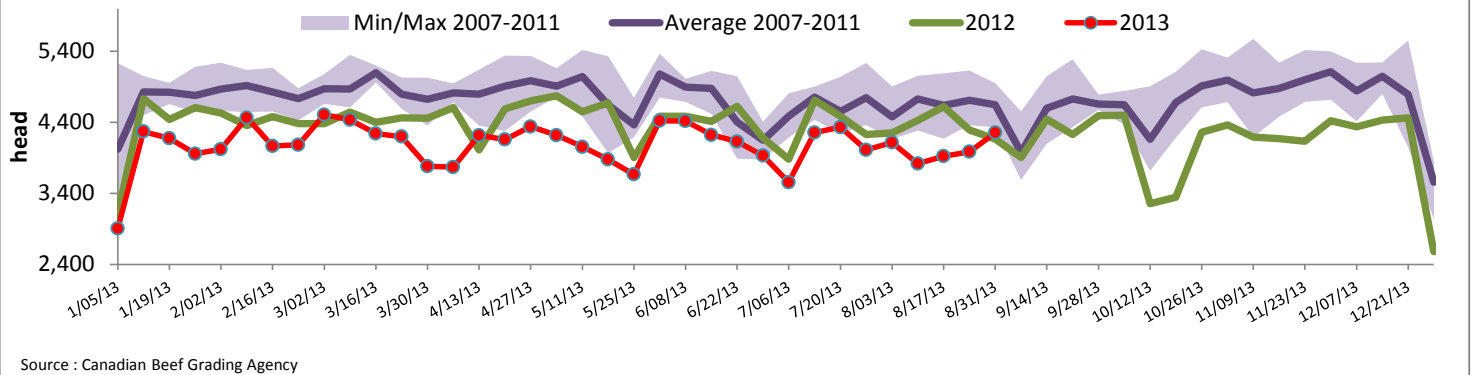
Federally Inspected Slaughter									
	Weekly			Year to date			Carcass Weight (lbs - January - June)		
	2013	2012	% chg	2013	2012	% chg	2013	2012	% chg
Ontario	554	300	84.7 %	20 566	21 783	-5.6 %	369	360	2.3 %
Quebec / Atlantic	3 701	3 866	-4.3 %	122 292	132 234	-7.5 %	312	302	3.0 %
Canada	4 255	4 166	2.1 %	142 858	154 017	-7.2 %	320	311	2.9 %

Source : Canadian Beef Grading Agency Source: CFIA

Exports				Imports			
Total veal (tonnes)	Jan. 1 - July 31, 2013			Total veal (tonnes)	Jan. 1 - Aug. 31, 2013		
	2013	2012	% chg		2013	2012	% chg
United States	1 000	1 643	-39.1 %	United States	648	843	-23.1 %
United Arab Emirates	62	55	12.6 %	Australia	544	755	-27.9 %
Russia	15	41	-63.2 %	New Zealand	62	130	-52.5 %
Others	15	31	-51.2 %	Mexico	15	0	
Total	1 093	1 770	-38.3 %	Total	1 269	1 728	-26.5 %
Live calves (head)	Jan. 1 - July 31			For the period Jan. 1 - June 30			
	35	1707		2013	2 012		
				21 465	24 382		

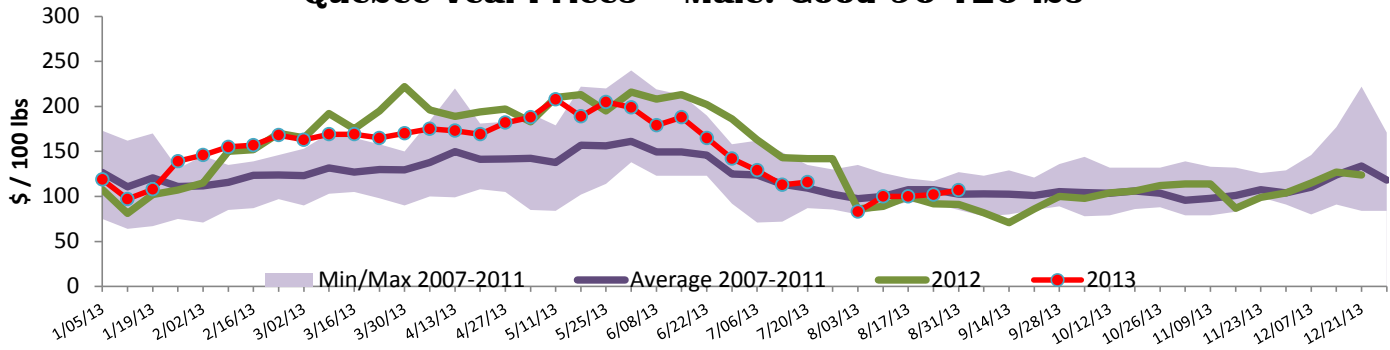
Source: Statistics Canada Source: CFIA

Federally Inspected Veal Slaughter - Canada



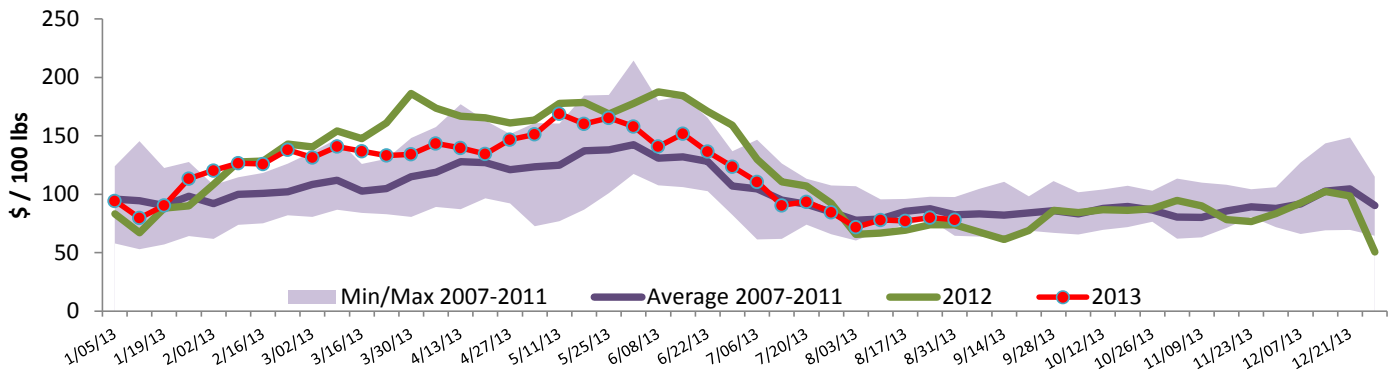


Quebec Veal Prices - Male: Good 90-120 lbs



Source : Fédération des producteurs de bovins du Québec

Ontario Veal Prices - 125 lbs and less



Source : Ontario Cattlemen's Association

United States

Week ending August 31, 2013

Federally Inspected Slaughter							Northeast and North Central U.S. Wholesale Price			
	Weekly			Year to date			\$/100 lbs	Simple avg	Min	Max
	2013	2012	% chg	2013	2012	% chg				
Milk-fed or nature *							307 Rack, Ribeye, Boneless	2 350.00	2 350.00	2 350.00
North East	3 476	3 178	9.4 %	114 292	109 949	4.0 %	332 Loin, Trimmed 4x4	585.00	540.00	630.00
North Central	2 684	1 960	36.9 %	85 304	108 105	-21.1 %	1336 Leg slice, Retail	937.50	750.00	1 125.00
Total	6 160	5 138	19.9 %	199 596	218 054	-8.5 %	1312 Osso Buco, Fore Shank	897.00	699.00	1 095.00
Other calves	8 840	9 754	-9.4 %	296 698	271 047	9.5 %	Shoulder Clod, Chuck	567.50	490.00	645.00
Total	15 000	14 892	0.7 %	496 294	489 101	1.5 %				
							Source : USDA			
Production							Pennsylvania Vintage Calf Auction			
Calves (million lbs)	2.0	2.3	-13.0 %	72.0	77.1	-6.6 %	Graded Holstein Bull Calves August 27, 2013			
Live weight (lbs)	235	260	-9.6 %				\$/ 100 lbs Min Max			
Dressed weight (lbs)	138	154	-10.4 %							
							Source : USDA			
Northeast and North Central										
(Veal Carcass, Special fed * (Hide off, 255-315 lbs))										
							\$ / 100 lbs Average Min Max			
* Special fed : milk fed, nature										
							Number 1			
							112 - 122 lbs 135.00 147.00			
							95 - 102 lbs 153.00 160.00			
							90 lbs 138.00 138.00			
							Number 2			
							95 - 112 lbs 147.00 155.00			
							84 - 90 lbs 120.00 132.00			
							Number 3			
							93 - 107 lbs 125.00 132.00			
							82 - 83 lbs 109.00 110.00			
							73 lbs 35.00 35.00			

Prepared by : Redmeat Section, Agriculture and Agri-Food Canada

Contact : Julie Dawson

Website : http://www.agr.gc.ca/redmeat/index_eng.htm

613 773 0149 or Julie.Dawson@agr.gc.ca