



Veal Supply at a Glance - Canada

For week ending September 14, 2013

Quebec Live Auction											
Dairy Calves	Number (head)	2013 Price (\$ / 100 lbs)			Number (head)	2012 Price (\$ / 100 lbs)			Volume (YTD) head		
		Average	Min	Max		Average	Min	Max	2013	2012	% chg
Male											
Good 90 -120 lbs	780	86.00	74.00	100.00	739	71.00	50.00	96.00	29 774	30 976	-3.9 %
Good 121 - 140 lbs	183	91.00	75.00	110.00	170	75.00	50.00	92.00	7 329	6 535	12.1 %
Average 90 - 140 lbs	584	65.00	50.00	82.00	425	55.00	28.00	75.00	15 183	13 786	10.1 %
Misc. - All weights	681	26.00	15.00	45.00	616	24.00	5.00	40.00	14 979	11 479	30.5 %
Female											
Good 90 -120 lbs	79	92.00	70.00	145.00	45	72.00	30.00	102.00	3 192	2 788	14.5 %
A2 Grain fed veal calves (hide off)	1225	219.10	n/a	n/a	1111	197.00	n/a	n/a	50 070	54 886	-8.8 %
596 lbs live - (325-353 lbs hide off)											

Source: Fédération des producteurs de bovins du Québec

Ontario Live Auction											
	Number (head)	2013 Price (\$ / 100 lbs)			Number (head)	2012 Price (\$ / 100 lbs)			Volume (YTD) head		
		Average	Min	Max		Average	Min	Max	2013	2012	% chg
+ 600 lbs	412	115.16	103.10	127.39	519	94.47	84.09	110.37	20 506	20 742	-1.1 %
451 - 600 lbs	30	99.22	87.97	107.67	53	90.81	79.87	99.84	1 486	1 834	-19.0 %
301 - 450 lbs	31	108.92	78.06	152.48	38	119.89	104.11	140.29	1 134	1 112	2.0 %
126 - 300 lbs	137	89.10	64.83	117.04	121	73.26	57.68	88.89	5 036	5 004	0.6 %
- 125 lbs	827	70.06	48.06	89.24	793	61.46	40.28	78.42	31 510	31 088	1.4 %

Source: Ontario Cattlemen's Association

Federally Inspected Slaughter									
	Weekly			Year to date			Carcass Weight (lbs - January - June)		
	2013	2012	% chg	2013	2012	% chg	2013	2012	% chg
Ontario	484	544	-11.0 %	21 552	22 988	-6.2 %	369	360	2.3 %
Quebec / Atlantic	3 306	3 902	-15.3 %	128 530	139 381	-7.8 %	312	302	3.0 %
Canada	3 790	4 446	-14.8 %	150 082	162 369	-7.6 %	320	311	2.9 %

Source : Canadian Beef Grading Agency

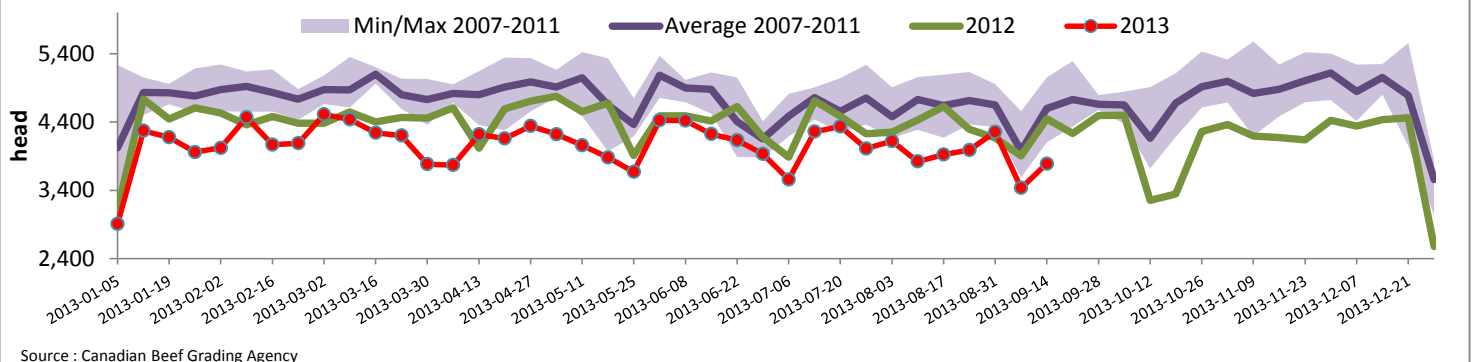
Source: CFIA

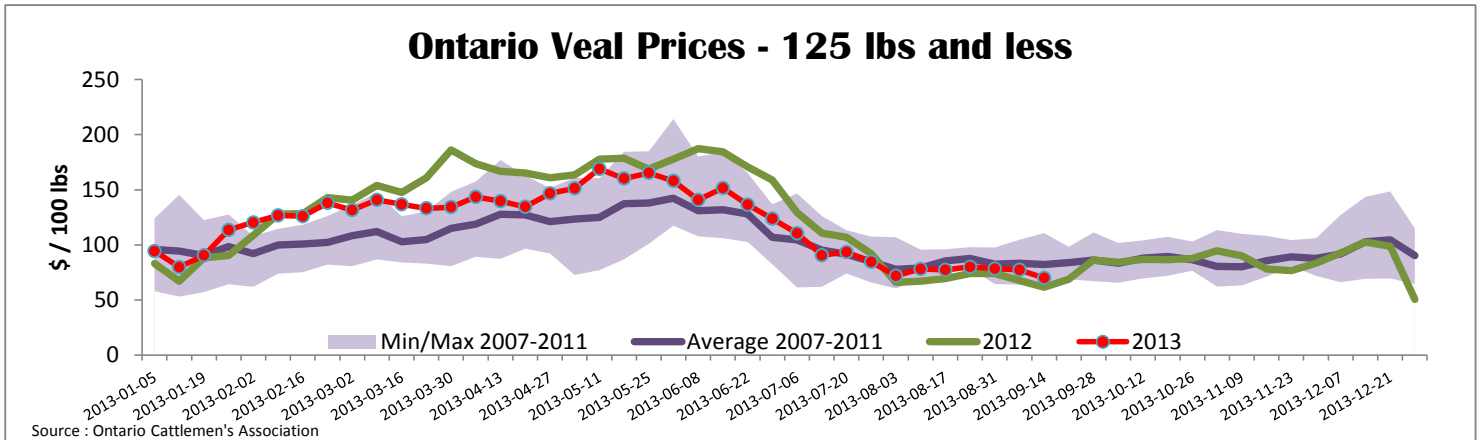
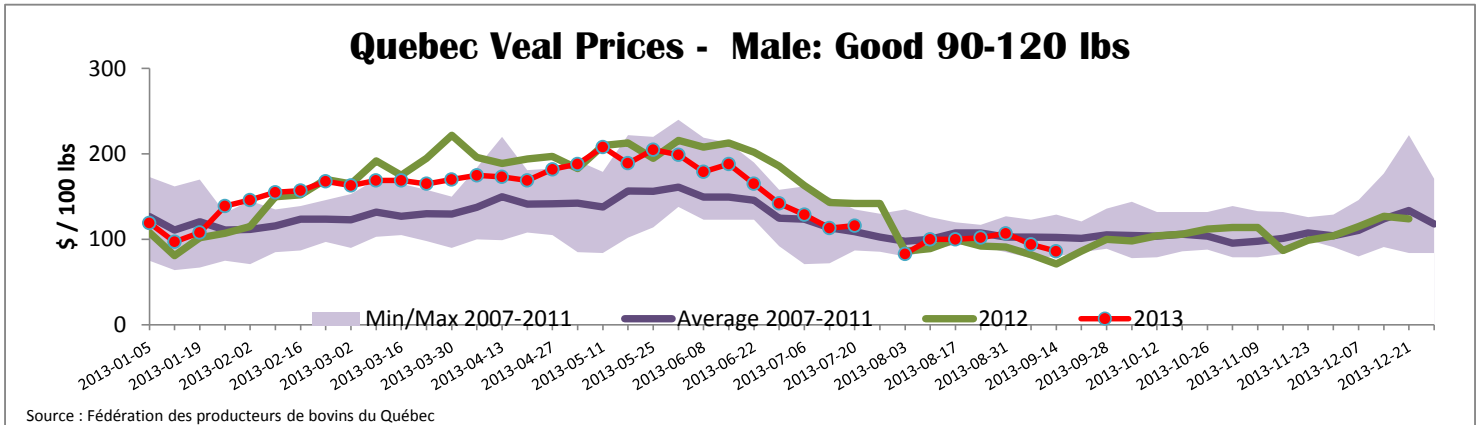
Exports				Imports							
Total veal (tonnes)	Jan. 1 - July 31, 2013	2013		2012		Total veal (tonnes)	Jan. 1 - Sept. 14, 2013	2013		2012	
			% chg		% chg				% chg		% chg
United States		1 000	-39.1 %	1 643		United States		691	-20.5 %	869	
United Arab Emirates		62	12.6 %	55		Australia		562	-26.5 %	764	
Russia		15	-63.2 %	41		New Zealand		290	-1.2 %	293	
Others		15	-51.2 %	31		Mexico		15		0	
Total		1 093	-38.3 %	1 770		Total		1 558	-19.1 %	1 927	
Live calves (head)	Jan. 1 - July 31	35		1707		For the period Jan. 1 - June 30		2013		2 012	
						Live calves (head)		21 465		24 382	

Source: Statistics Canada

Source: CFIA

Federally Inspected Veal Slaughter - Canada





United States											
Week ending September 14, 2013											
Federally Inspected Slaughter						Northeast and North Central U.S. Wholesale Price					
	Weekly			Year to date			\$/100 lbs		Simple avg	Min	Max
	2013	2012	% chg	2013	2012	% chg					
Milk-fed or nature *							307 Rack, Ribeye, Boneless	2 350.00	2 350.00	2 350.00	
North East	3 277	3 026	8.3 %	120 127	115 979	3.6 %	332 Loin, Trimmed 4x4	602.50	575.00	630.00	
North Central	2 521	2 526	-0.2 %	89 973	113 059	-20.4 %	1336 Leg slice, Retail	937.50	750.00	1 125.00	
Total	5 798	5 552	4.4 %	210 100	229 038	-8.3 %	1312 Osso Buco, Foreshank	877.00	659.00	1 095.00	
Other calves	9 202	11 085	-17.0 %	314 683	291 025	8.1 %	Shoulder Clod, Chuck	570.00	495.00	645.00	
Total	15 000	16 637	-9.8 %	524 783	520 063	0.9 %					Source : USDA
Production							Pennsylvania Vintage Calf Auction				
Calves (million lbs)	2.1	2.3	-8.7 %	76.0	81.4	-6.6 %	Graded Holstein Bull Calves		September 10, 2013		
Live weight (lbs)	238	233	2.1 %				\$/ 100 lbs		Min	Max	
Dressed weight (lbs)	140	137	2.2 %								
Source : USDA							Number 1	124 lbs	118.00	118.00	
Northeast and North Central (Veal Carcass, Special fed * (Hide off, 255-315 lbs)) * Special fed : milk fed, nature								95 - 112 lbs	127.00	155.00	
								85 - 90 lbs	105.00	110.00	
							Number 2	95 - 113 lbs	142.00	155.00	
								84 - 90 lbs	112.00	127.00	
								75 lbs	50.00	50.00	
							Number 3	94 - 107 lbs	70.00	97.00	
								72 - 83 lbs	31.00	55.00	