



## Veal Supply at a Glance - Canada

For week ending September 21, 2013

Quebec Live Auction											
	2013				2012				Volume (YTD)		
	Number (head)	Price ( \$ / 100 lbs)			Number (head)	Price ( \$ / 100 lbs)			head		
Dairy Calves		Average	Min	Max		Average	Min	Max	2013	2012	% chg
Male											
Good 90 -120 lbs	833	95.00	80.00	111.00	882	86.00	70.00	107.00	30 607	31 858	-3.9 %
Good 121 - 140 lbs	176	104.00	85.00	126.00	148	85.00	70.00	110.00	7 505	6 683	12.3 %
Average 90 - 140 lbs	513	69.00	40.00	92.00	299	63.00	35.00	85.00	15 696	14 085	11.4 %
Misc. - All weights	623	30.00	15.00	60.00	389	26.00	15.00	50.00	15 602	11 868	31.5 %
Female											
Good 90 -120 lbs	54	99.00	60.00	150.00	60	86.00	35.00	140.00	3 246	2 848	14.0 %
A2 Grain fed veal calves (hide off)	1371	222.90	n/a	n/a	1304	202.40	n/a	n/a	51 441	56 190	-8.5 %
596 lbs live - (325-353 lbs hide off)											

Source: Fédération des producteurs de bovins du Québec

Ontario Live Auction											
	2013				2012				Volume (YTD)		
	Number (head)	Price ( \$ / 100 lbs)			Number (head)	Price ( \$ / 100 lbs)			head		
		Average	Min	Max		Average	Min	Max	2013	2012	% chg
+ 600 lbs	545	115.97	103.75	126.54	456	105.89	93.89	116.19	21 051	21 198	-0.7 %
451 - 600 lbs	56	103.76	89.28	117.33	38	93.54	80.71	100.47	1 542	1 872	-17.6 %
301 - 450 lbs	23	101.26	82.61	118.46	31	130.71	93.90	154.55	1 157	1 143	1.2 %
126 - 300 lbs	143	92.63	63.49	117.97	135	71.05	48.96	91.87	5 179	5 139	0.8 %
- 125 lbs	794	75.18	46.02	97.73	897	68.87	45.55	87.24	32 304	31 985	1.0 %

Source: Ontario Cattlemen's Association

Federally Inspected Slaughter									
	Weekly			Year to date			Carcass Weight (lbs - January - July)		
	2013	2012	% chg	2013	2012	% chg	2013	2012	% chg
Ontario	536	654	-18.0 %	22 088	23 642	-6.6 %	364	360	1.3 %
Quebec / Atlantic	3 701	3 578	3.4 %	132 231	142 959	-7.5 %	304	303	0.4 %
<b>Canada</b>	<b>4 237</b>	<b>4 232</b>	<b>0.1 %</b>	<b>154 319</b>	<b>166 601</b>	<b>-7.4 %</b>	<b>313</b>	<b>311</b>	<b>0.5 %</b>

Source : Canadian Beef Grading Agency

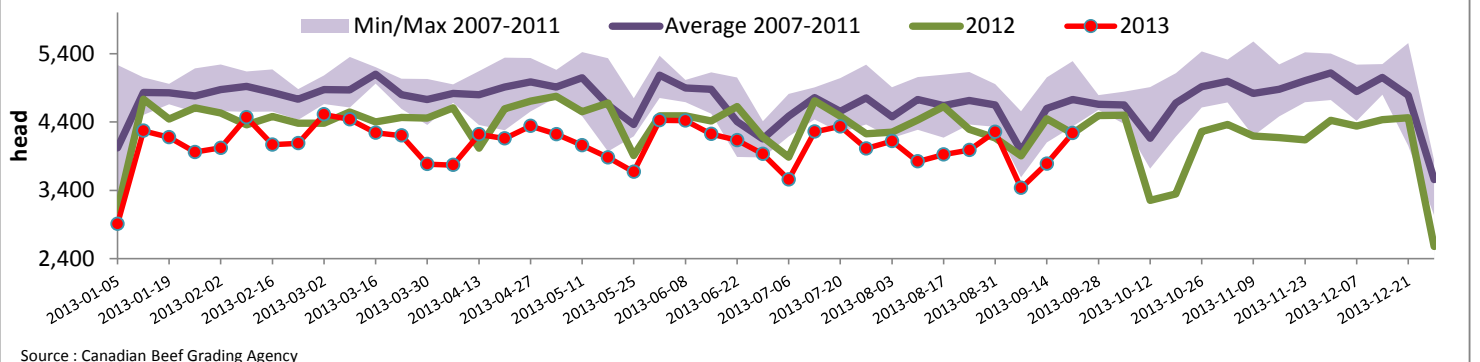
Source: CFIA

Exports				Imports			
Total veal (tonnes)	Jan. 1 - July 30, 2013			Total veal (tonnes)	Jan. 1 - Sept. 21, 2013		
	2013	2012	% chg		2013	2012	% chg
United States	1 000	1 643	-39.1 %	United States	701	923	-24.0 %
United Arab Emirates	62	55	12.6 %	Australia	562	764	-26.5 %
Russia	15	41	-63.2 %	New Zealand	365	311	17.3 %
Others	15	31	-51.2 %	Mexico	15	0	
<b>Total</b>	<b>1 093</b>	<b>1 770</b>	<b>-38.3 %</b>	<b>Total</b>	<b>1 644</b>	<b>1 998</b>	<b>-17.7 %</b>
Live calves (head)	Jan. 1 - July 31			Jan. 1 - July 31			
	35	1707		26 213	27 450		

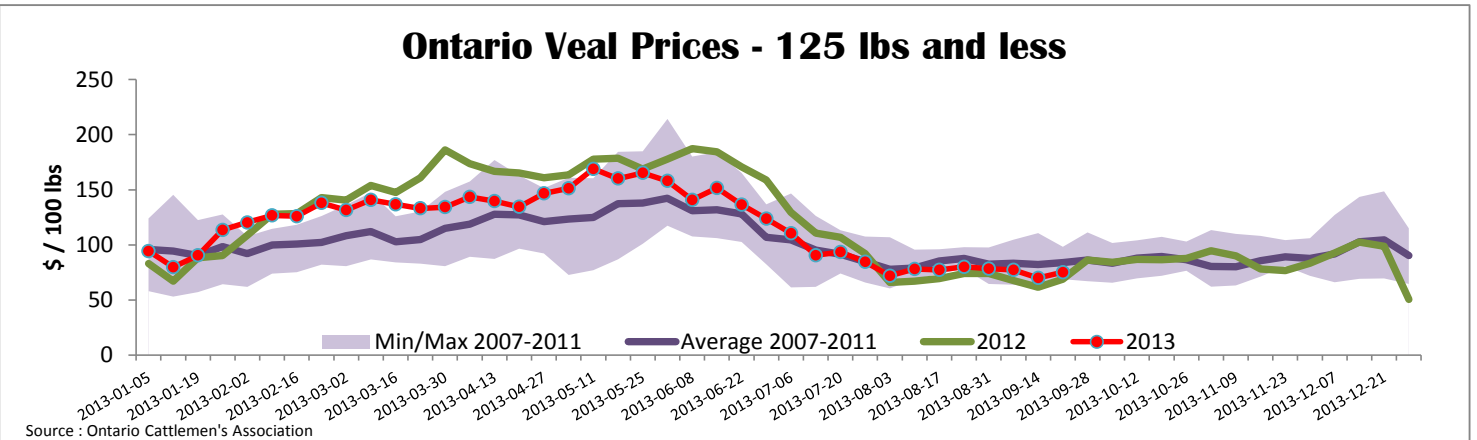
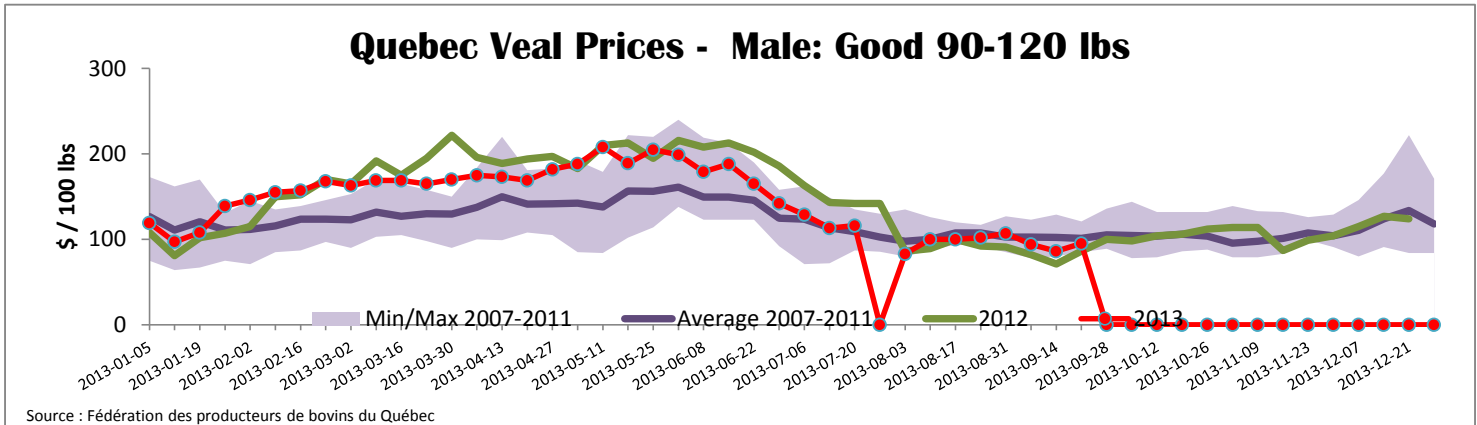
Source: Statistics Canada

Source: CFIA

## Federally Inspected Veal Slaughter - Canada



Source : Canadian Beef Grading Agency



<b>United States</b>											
Week ending September 21, 2013											
Federally Inspected Slaughter						Northeast and North Central U.S. Wholesale Price					
	Weekly			Year to date			\$/100 lbs		Simple avg	Min	Max
	2013	2012	% chg	2013	2012	% chg					
Milk-fed or nature *							307 Rack, Ribeye, Boneless	2 350.00	2 350.00	2 350.00	
North East	3 231	3 454	-6.5 %	123 358	119 433	3.3 %	332 Loin, Trimmed 4x4	602.50	575.00	630.00	
North Central	2 251	1 802	24.9 %	92 224	114 861	-19.7 %	1336 Leg slice, Retail	937.50	750.00	1 125.00	
<b>Total</b>	<b>5 482</b>	<b>5 256</b>	<b>4.3 %</b>	<b>215 582</b>	<b>234 294</b>	<b>-8.0 %</b>	1312 Osso Buco, Foreshank	877.00	659.00	1 095.00	
Other calves	9 518	10 301	-7.6 %	324 136	301 326	7.6 %	Shoulder Clod, Chuck	570.00	495.00	645.00	
<b>Total</b>	<b>15 000</b>	<b>15 557</b>	<b>-3.6 %</b>	<b>539 718</b>	<b>535 620</b>	<b>0.8 %</b>					Source : USDA
Production							Pennsylvania Vintage Calf Auction				
Calves (million lbs)	2.1	2.1	0.0 %	78.1	83.5	-6.5 %	Graded Holstein Bull Calves		September 17, 2013		
Live weight (lbs)	237	236	0.4 %				\$/ 100 lbs		Min	Max	
Dressed weight (lbs)	139	138	0.7 %				Number 1	123 lbs	113.00	113.00	
								95 - 111 lbs	120.00	132.00	
								85 - 90 lbs	55.00	77.00	
								79 lbs	25.00	25.00	
							Number 2	95 - 113 lbs	120.00	138.00	
								90 lbs	70.00	72.00	
								73 - 84 lbs	30.00	52.00	
							Number 3	83 - 107 lbs	45.00	60.00	
								73 lbs	25.00	25.00	