



Veal Supply at a Glance - Canada

For week ending September 28, 2013

Quebec Live Auction											
	2013				2012				Volume (YTD)		
	Number (head)	Price (\$ / 100 lbs)			Number (head)	Price (\$ / 100 lbs)			head		
Dairy Calves		Average	Min	Max		Average	Min	Max	2013	2012	% chg
Male											
Good 90 -120 lbs	986	114.00	90.00	155.00	1035	108.00	90.00	125.00	31 593	32 893	-4.0 %
Good 121 - 140 lbs	174	116.00	94.00	160.00	153	105.00	90.00	120.00	7 679	6 836	12.3 %
Average 90 - 140 lbs	449	85.00	50.00	125.00	328	80.00	50.00	105.00	16 145	14 413	12.0 %
Misc. - All weights	320	29.00	15.00	50.00	298	30.00	14.00	60.00	15 922	12 166	30.9 %
Female											
Good 90 -120 lbs	88	101.00	80.00	145.00	59	100.00	57.00	125.00	3 334	2 907	14.7 %
A2 Grain fed veal calves (hide off)	1436	222.30	n/a	n/a	1325	213.70	n/a	n/a	52 877	57 515	-8.1 %
596 lbs live - (325-353 lbs hide off)											

Source: Fédération des producteurs de bovins du Québec

Ontario Live Auction											
	2013				2012				Volume (YTD)		
	Number (head)	Price (\$ / 100 lbs)			Number (head)	Price (\$ / 100 lbs)			head		
		Average	Min	Max		Average	Min	Max	2013	2012	% chg
+ 600 lbs	451	116.05	105.43	127.85	569	110.11	99.33	124.04	21 502	21 767	-1.2 %
451 - 600 lbs	41	101.54	86.25	113.97	65	95.57	80.31	108.64	1 583	1 937	-18.3 %
301 - 450 lbs	30	119.60	96.13	135.72	31	123.39	93.71	152.68	1 187	1 174	1.1 %
126 - 300 lbs	120	96.67	67.96	121.51	129	85.12	65.43	122.97	5 299	5 268	0.6 %
- 125 lbs	850	92.81	58.69	115.07	848	86.13	55.67	106.93	33 154	32 833	1.0 %

Source: Ontario Cattlemen's Association

Federally Inspected Slaughter									
	Weekly			Year to date			Carcass Weight (lbs - January - July)		
	2013	2012	% chg	2013	2012	% chg	2013	2012	% chg
Ontario	666	619	7.6 %	22 754	24 261	-6.2 %	364	360	1.3 %
Quebec / Atlantic	3 348	3 876	-13.6 %	135 579	146 835	-7.7 %	304	303	0.4 %
Canada	4 014	4 495	-10.7 %	158 333	171 096	-7.5 %	313	311	0.5 %

Source : Canadian Beef Grading Agency

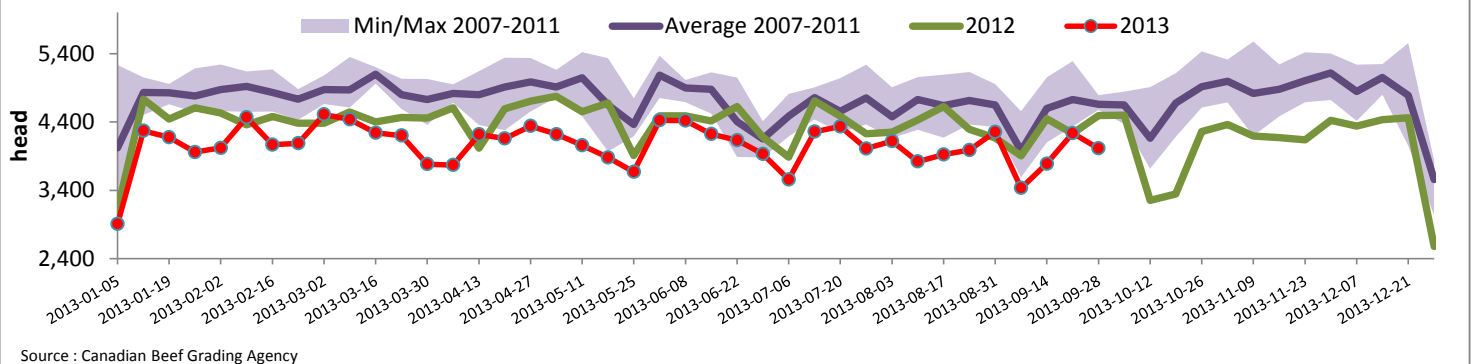
Source: CFIA

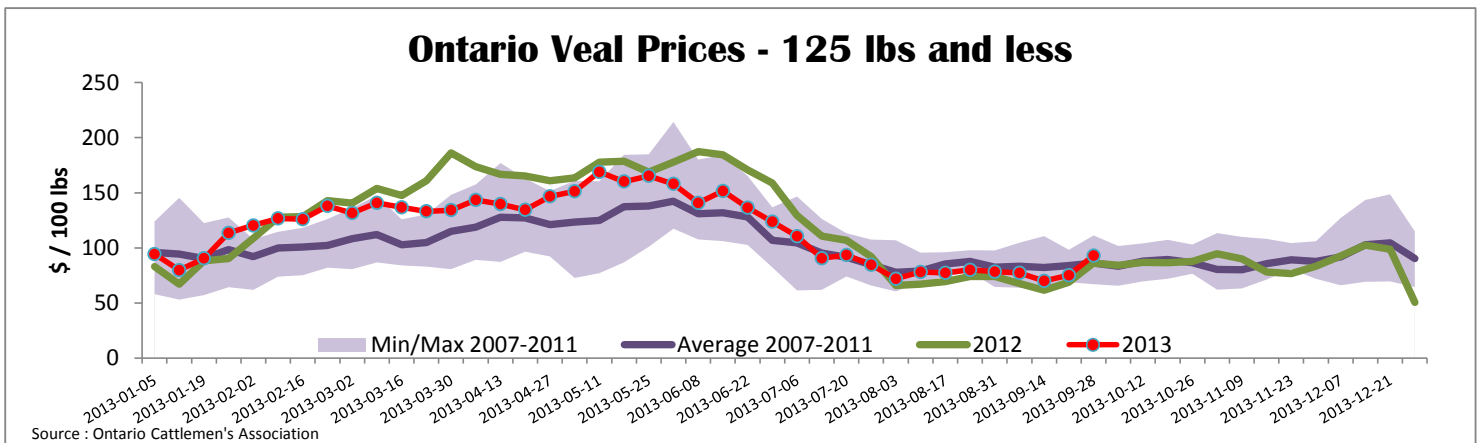
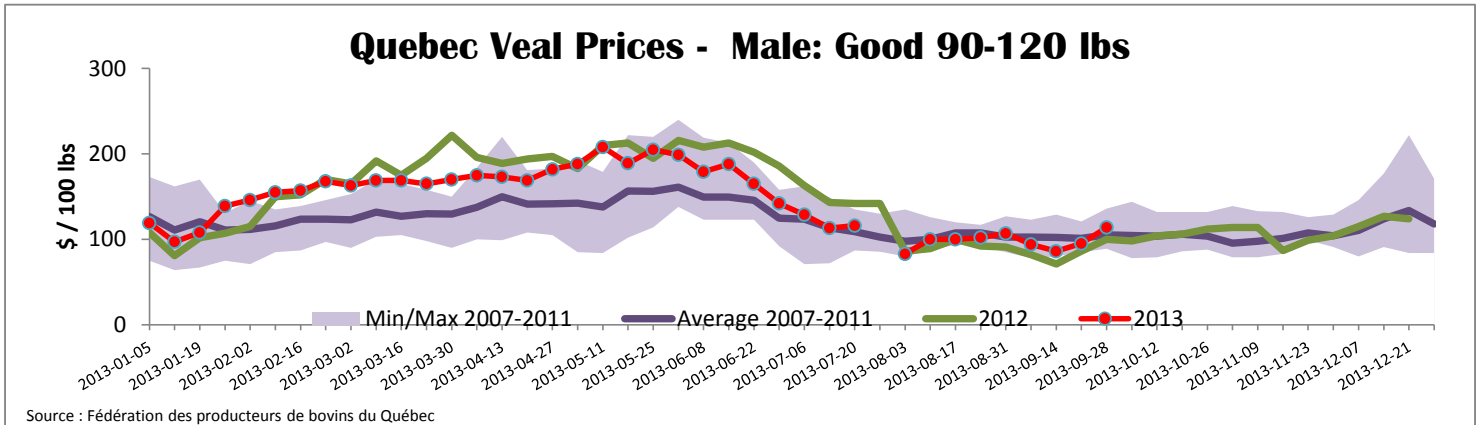
Exports				Imports					
Total veal (tonnes)	Jan. 1 - July 30, 2013			Total veal (tonnes)	Jan. 1 - Sept. 28, 2013				
	2013	2012	% chg		2013	2012	% chg		
United States	1 000	1 643	-39.1 %	United States	714	986	-27.6 %		
United Arab Emirates	62	55	12.6 %	Australia	600	764	-21.5 %		
Russia	15	41	-63.2 %	New Zealand	438	384	13.9 %		
Others	15	31	-51.2 %	Mexico	15	0			
Total	1 093	1 770	-38.3 %	Total	1 767	2 135	-17.2 %		
Live calves (head)	Jan. 1 - July 31			Jan. 1 - July 31					
	35	1707		26 213	2 012	27 450			

Source: Statistics Canada

Source: CFIA

Federally Inspected Veal Slaughter - Canada





United States											
Week ending September 21, 2013											
Federally Inspected Slaughter						Northeast and North Central U.S. Wholesale Price					
	Weekly			Year to date			\$/100 lbs		Simple avg	Min	Max
	2013	2012	% chg	2013	2012	% chg					
Milk-fed or nature *							307 Rack, Ribeye, Boneless	2 350.00	2 350.00	2 350.00	
North East	3 231	3 454	-6.5 %	123 358	119 433	3.3 %	332 Loin, Trimmed 4x4	602.50	575.00	630.00	
North Central	2 251	1 802	24.9 %	92 224	114 861	-19.7 %	1336 Leg slice, Retail	942.50	760.00	1 125.00	
Total	5 482	5 256	4.3 %	215 582	234 294	-8.0 %	1312 Osso Buco, Foreshank	877.00	659.00	1 095.00	
Other calves	9 518	9 958	-4.4 %	339 136	316 540	7.1 %	Shoulder Clod, Chuck	570.00	495.00	645.00	
Total	15 000	15 214	-1.4 %	554 718	550 834	0.7 %					Source : USDA
*Due to the U.S. Government shutdown the most recent U.S. slaughter information is unavailable											
Production						Pennsylvania Vintage Calf Auction					
Calves (million lbs)	2.0	2.1	-4.8 %	80.0	85.6	-6.5 %	Graded Holstein Bull Calves		September 24, 2013		
Live weight (lbs)	232	237	-2.1 %				\$/ 100 lbs		Min	Max	
Dressed weight (lbs)	136	139	-2.2 %								
						Source : USDA					
Northeast and North Central			\$/ 100 lbs	Average	Min	Max					
(Veal Carcass, Special fed * (Hide off, 255-315 lbs))				374.65	360.00	380.00					
* Special fed : milk fed, nature											
							Number 1	90 - 121 lbs		120.00	140.00
							Number 2	95 - 113 lbs		127.00	137.00
								90 lbs		107.00	112.00
								83 lbs		90.00	90.00
							Number 3	93 - 106 lbs		90.00	96.00
								83 - 84 lbs		60.00	60.00
								73 lbs		27.00	27.00