



Veal Supply at a Glance - Canada

For week ending October 5, 2013

Quebec Live Auction											
Dairy Calves	Number (head)	2013 Price (\$ / 100 lbs)			Number (head)	2012 Price (\$ / 100 lbs)			Volume (YTD) head		
		Average	Min	Max		Average	Min	Max	2013	2012	% chg
Male											
Good 90 -120 lbs	942	115.00	90.00	148.00	923	98.00	90.00	107.00	32 535	33 816	-3.8 %
Good 121 - 140 lbs	158	120.00	100.00	140.00	191	100.00	85.00	114.00	7 837	7 027	11.5 %
Average 90 - 140 lbs	469	83.00	50.00	115.00	363	76.00	40.00	92.00	16 614	14 776	12.4 %
Misc. - All weights	384	24.00	5.00	50.00	383	29.00	10.00	55.00	16 306	12 529	30.1 %
Female											
Good 90 -120 lbs	51	96.00	70.00	145.00	73	92.00	60.00	125.00	3 385	2 980	13.6 %
A2 Grain fed veal calves (hide off)	1453	224.50	n/a	n/a	1482	211.40	n/a	n/a	54 330	58 997	-7.9 %
596 lbs live - (325-353 lbs hide off)											

Source: Fédération des producteurs de bovins du Québec

Ontario Live Auction											
	Number (head)	2013 Price (\$ / 100 lbs)			Number (head)	2012 Price (\$ / 100 lbs)			Volume (YTD) head		
		Average	Min	Max		Average	Min	Max	2013	2012	% chg
+ 600 lbs	505	121.92	107.39	137.01	536	106.94	96.14	119.08	22 007	22 303	-1.3 %
451 - 600 lbs	59	111.38	94.31	121.34	53	91.11	77.53	102.76	1 642	1 990	-17.5 %
301 - 450 lbs	33	131.69	100.56	150.65	40	105.94	70.75	127.73	1 220	1 214	0.5 %
126 - 300 lbs	132	84.79	59.34	109.60	120	84.28	61.85	107.83	5 431	5 388	0.8 %
- 125 lbs	905	92.66	62.07	114.09	835	84.32	54.17	105.70	34 059	33 668	1.2 %

Source: Ontario Cattlemen's Association

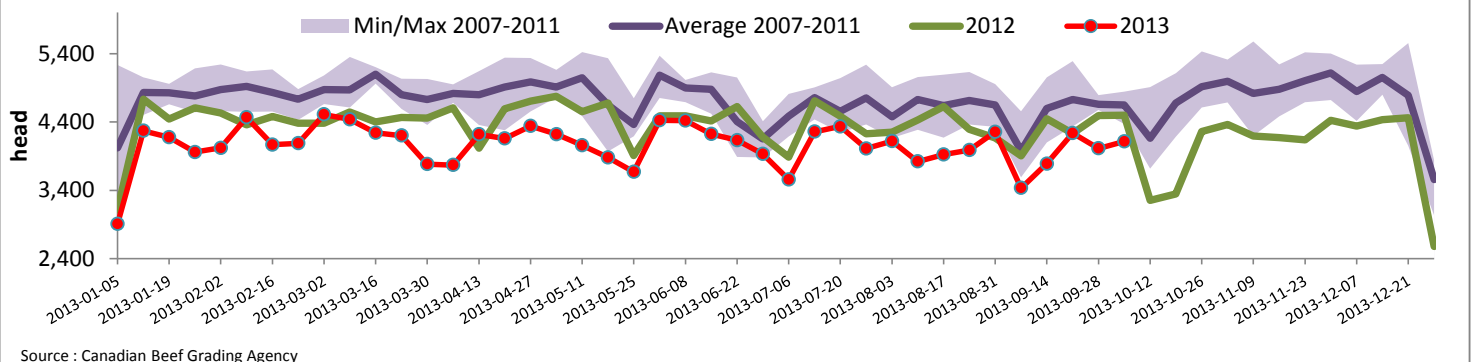
Federally Inspected Slaughter									
	Weekly			Year to date			Carcass Weight (lbs - January - July)		
	2013	2012	% chg	2013	2012	% chg	2013	2012	% chg
Ontario	475	606	-21.6 %	23 229	24 867	-6.6 %	364	360	1.3 %
Quebec / Atlantic	3 639	3 895	-6.6 %	139 218	150 730	-7.6 %	304	303	0.4 %
Canada	4 114	4 501	-8.6 %	162 447	175 597	-7.5 %	313	311	0.5 %

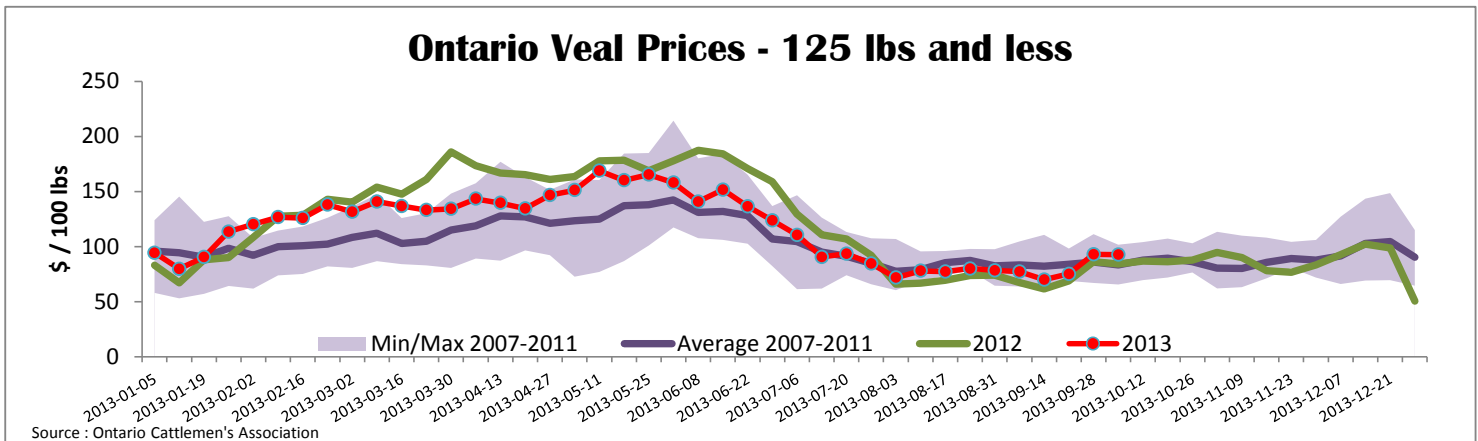
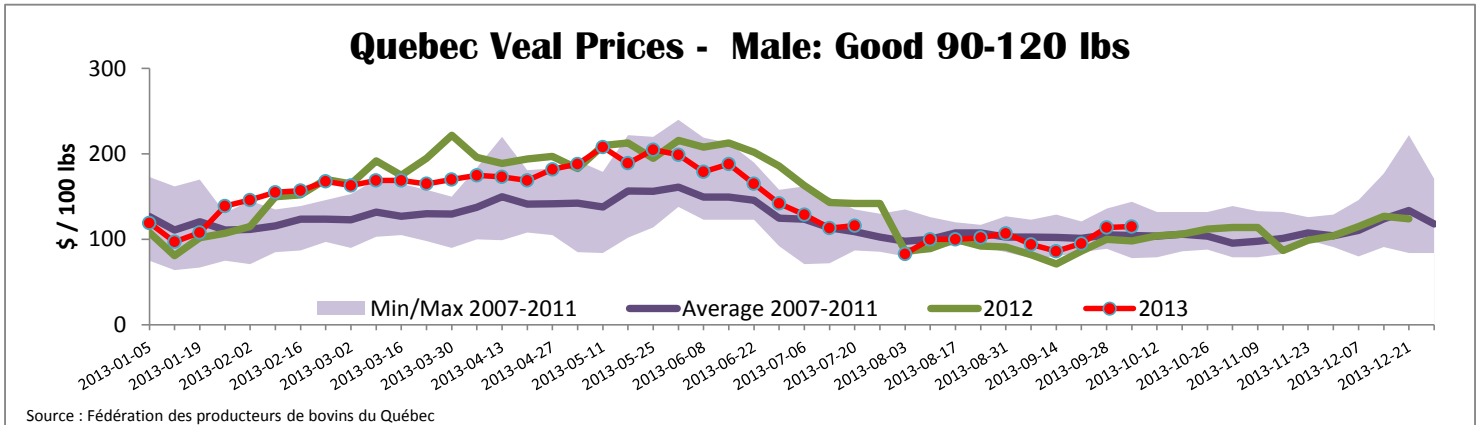
Source : Canadian Beef Grading Agency Source: CFIA

Exports				Imports							
Total veal (tonnes)	Jan. 1 - Aug. 31, 2013	2013		2012		Total veal (tonnes)	Jan. 1 - Oct. 5, 2013	2013		2012	
			% chg		% chg				% chg		% chg
United States		1 155	-38.4 %	1 876		United States		726	-27.5 %	1 001	
United Arab Emirates		74	17.8 %	63		Australia		613	-21.3 %	779	
Russia		15	-63.2 %	41		New Zealand		550	11.5 %	493	
Others		15	-68.1 %	47		Mexico		15		0	
Total		1 259	-37.9 %	2 026		Total		1 904	-16.2 %	2 273	
Live calves (head)	Jan. 1 - July 31	272		1801		For the period Jan. 1 - July 31		2013		2012	
						Live calves (head)		26 213		27 450	

Source: Statistics Canada Source: CFIA

Federally Inspected Veal Slaughter - Canada





United States											
Week ending September 21, 2013											
Federally Inspected Slaughter							Northeast and North Central U.S. Wholesale Price				
	Weekly			Year to date			\$/100 lbs	Simple avg	Min	Max	
	2013	2012	% chg	2013	2012	% chg					
Milk-fed or nature *							307 Rack, Ribeye, Boneless	2 350.00	2 350.00	2 350.00	
North East	3 231	3 454	-6.5 %	123 358	119 433	3.3 %	332 Loin, Trimmed 4x4	602.50	575.00	630.00	
North Central	2 251	1 802	24.9 %	92 224	114 861	-19.7 %	1336 Leg slice, Retail	942.50	760.00	1 125.00	
Total	5 482	5 256	4.3 %	215 582	234 294	-8.0 %	1312 Osso Buco, Fore Shank	877.00	659.00	1 095.00	
Other calves	9 518	9 958	-4.4 %	339 136	316 540	7.1 %	Shoulder Clod, Chuck	570.00	495.00	645.00	
Total	15 000	15 214	-1.4 %	554 718	550 834	0.7 %					
*Due to the U.S. Government shutdown the most recent U.S. slaughter information is unavailable							Pennsylvania Vintage Calf Auction				
Production							Graded Holstein Bull Calves				
Calves (million lbs)	2.0	2.1	-4.8 %	80.0	85.6	-6.5 %	September 24, 2013				
Live weight (lbs)	232	237	-2.1 %				\$/ 100 lbs	Min	Max		
Dressed weight (lbs)	136	139	-2.2 %								
Source : USDA											
Northeast and North Central											
(Veal Carcass, Special fed * (Hide off, 255-315 lbs))							\$/ 100 lbs	Average	Min	Max	
* Special fed : milk fed, nature								374.65	360.00	380.00	
							Number 1	90 - 121 lbs		120.00	140.00
							Number 2	95 - 113 lbs		127.00	137.00
								90 lbs		107.00	112.00
								83 lbs		90.00	90.00
							Number 3	93 - 106 lbs		90.00	96.00
								83 - 84 lbs		60.00	60.00
								73 lbs		27.00	27.00