



Veal Supply at a Glance - Canada

For week ending October 12, 2013

Quebec Live Auction											
Dairy Calves	Number (head)	2013 Price (\$ / 100 lbs)			Number (head)	2012 Price (\$ / 100 lbs)			Volume (YTD) head		
		Average	Min	Max		Average	Min	Max	2013	2012	% chg
Male											
Good 90 -120 lbs	894	132.00	105.00	165.00	924	104.00	90.00	115.00	33 429	34 740	-3.8 %
Good 121 - 140 lbs	172	132.00	100.00	168.00	138	102.00	90.00	115.00	8 009	7 165	11.8 %
Average 90 - 140 lbs	506	100.00	70.00	130.00	328	80.00	50.00	105.00	17 120	15 104	13.3 %
Misc. - All weights	404	29.00	15.00	65.00	343	31.00	14.00	60.00	16 710	12 872	29.8 %
Female											
Good 90 -120 lbs	73	115.00	85.00	150.00	66	95.00	70.00	120.00	3 458	3 046	13.5 %
A2 Grain fed veal calves (hide off)	1438	226.30	n/a	n/a	1332	211.40	n/a	n/a	55 768	60 329	-7.6 %
596 lbs live - (325-353 lbs hide off)											

Source: Fédération des producteurs de bovins du Québec

Ontario Live Auction											
	Number (head)	2013 Price (\$ / 100 lbs)			Number (head)	2012 Price (\$ / 100 lbs)			Volume (YTD) head		
		Average	Min	Max		Average	Min	Max	2013	2012	% chg
+ 600 lbs	522	120.61	108.45	134.81	482	104.06	90.85	114.12	22 529	22 785	-1.1 %
451 - 600 lbs	82	103.60	89.40	116.04	55	90.68	77.45	104.04	1 724	2 045	-15.7 %
301 - 450 lbs	54	117.99	77.37	146.54	39	117.34	92.43	157.33	1 274	1 253	1.7 %
126 - 300 lbs	138	96.09	73.55	124.30	101	80.11	56.31	103.90	5 569	5 489	1.5 %
- 125 lbs	826	101.61	60.69	127.82	690	86.81	61.13	106.46	34 885	34 358	1.5 %

Source: Ontario Cattlemen's Association

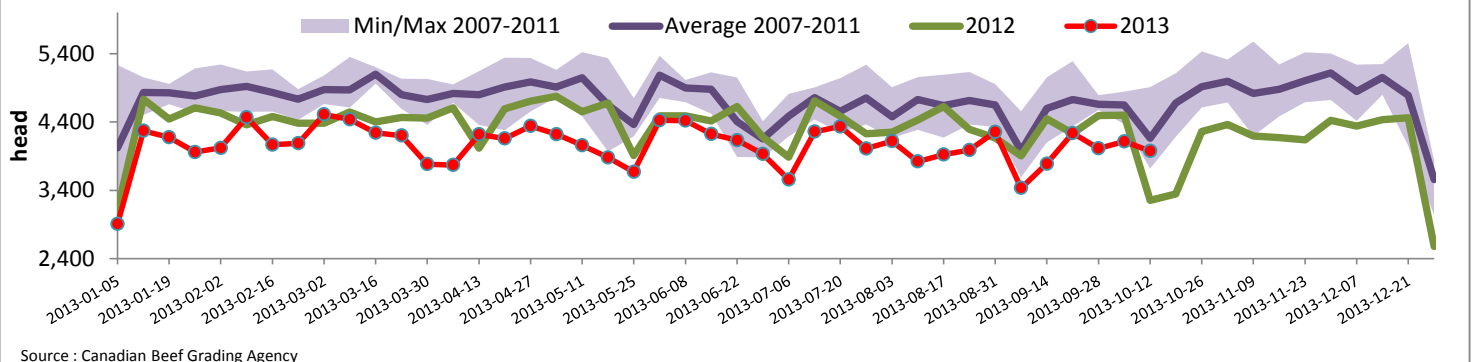
Federally Inspected Slaughter									
	Weekly			Year to date			Carcass Weight (lbs - January - July)		
	2013	2012	% chg	2013	2012	% chg	2013	2012	% chg
Ontario	434	232	87.1 %	23 663	25 099	-5.7 %	364	360	1.3 %
Quebec / Atlantic	3 541	3 023	17.1 %	142 759	153 753	-7.2 %	304	303	0.4 %
Canada	3 975	3 255	22.1 %	166 422	178 852	-6.9 %	313	311	0.5 %

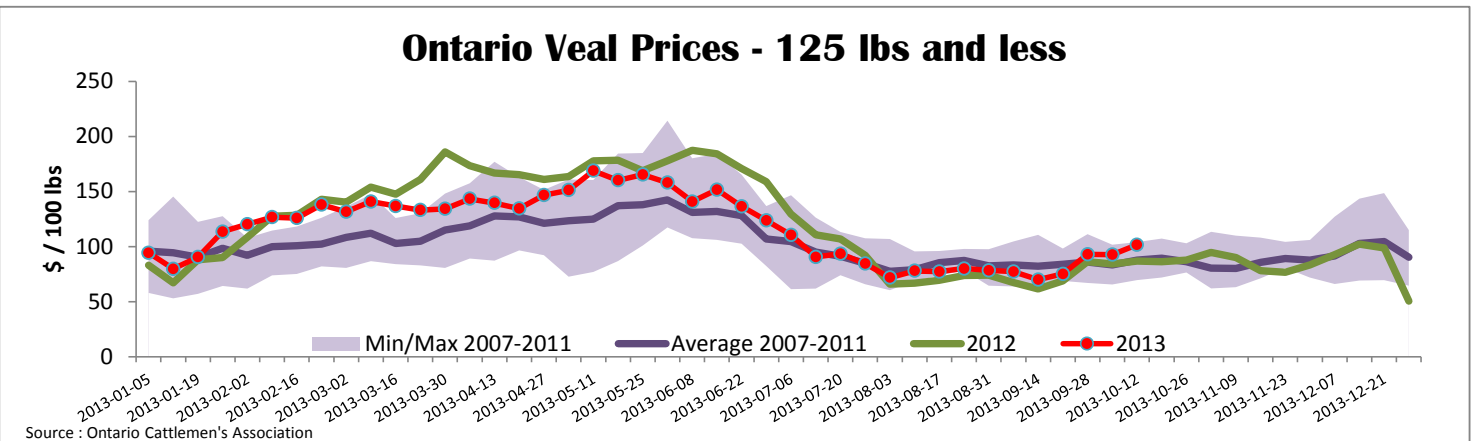
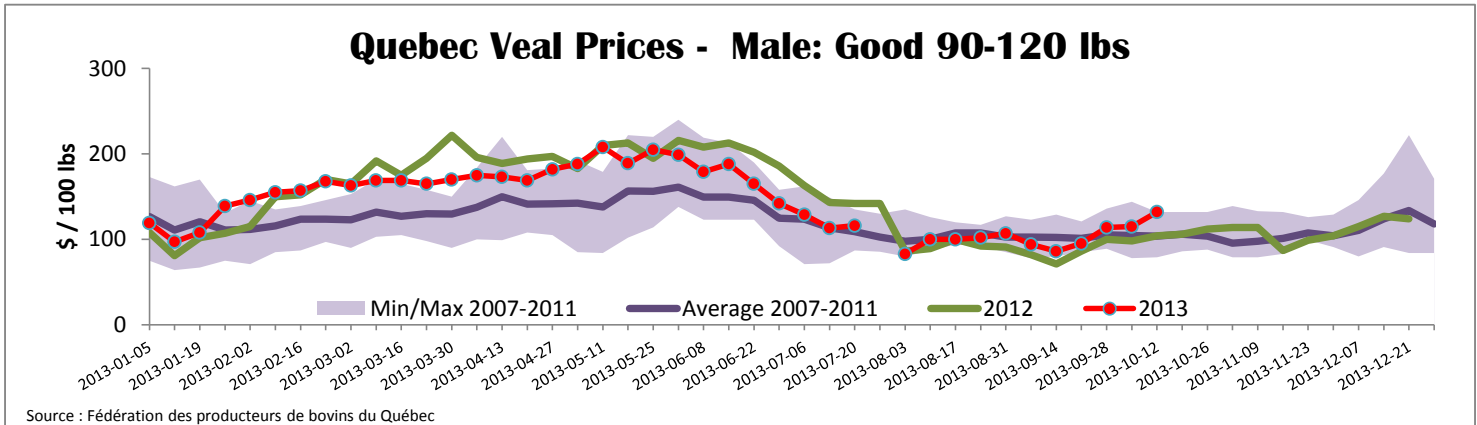
Source : Canadian Beef Grading Agency Source: CFIA

Exports				Imports				
Total veal (tonnes)	Jan. 1 - Aug. 31, 2013	2013		2012		2013	2012	% chg
		2013	2012	% chg	% chg			
United States		1 155	1 876	-38.4 %		741	1 036	-28.5 %
United Arab Emirates		74	63	17.8 %		628	779	-19.3 %
Russia		15	41	-63.2 %		550	621	-11.4 %
Others		15	47	-68.1 %		15	0	
Total		1 259	2 026	-37.9 %		1 935	2 437	-20.6 %
Live calves (head)	Jan. 1 - July 31	272	1801		For the period Jan. 1 - August 31	2013	2 012	
					Live calves (head)	28 213	30 072	

Source: Statistics Canada Source: CFIA

Federally Inspected Veal Slaughter - Canada





United States											
Week ending September 21, 2013											
Federally Inspected Slaughter							Northeast and North Central U.S. Wholesale Price				
	Weekly			Year to date			\$/100 lbs	Simple avg	Min	Max	
	2013	2012	% chg	2013	2012	% chg					
Milk-fed or nature *							307 Rack, Ribeye, Boneless	2 350.00	2 350.00	2 350.00	
North East	3 231	3 454	-6.5 %	123 358	119 433	3.3 %	332 Loin, Trimmed 4x4	602.50	575.00	630.00	
North Central	2 251	1 802	24.9 %	92 224	114 861	-19.7 %	1336 Leg slice, Retail	942.50	760.00	1 125.00	
Total	5 482	5 256	4.3 %	215 582	234 294	-8.0 %	1312 Osso Buco, Fore Shank	877.00	659.00	1 095.00	
Other calves	9 518	9 958	-4.4 %	339 136	316 540	7.1 %	Shoulder Clod, Chuck	570.00	495.00	645.00	
Total	15 000	15 214	-1.4 %	554 718	550 834	0.7 %					
*Due to the U.S. Government shutdown the most recent U.S. slaughter information is unavailable							Pennsylvania Vintage Calf Auction				
Production							Graded Holstein Bull Calves				
Calves (million lbs)	2.0	2.1	-4.8 %	80.0	85.6	-6.5 %		September 24, 2013			
Live weight (lbs)	232	237	-2.1 %					\$/ 100 lbs	Min	Max	
Dressed weight (lbs)	136	139	-2.2 %								
Source : USDA							Number 1	90 - 121 lbs		120.00	140.00
Northeast and North Central (Veal Carcass, Special fed * (Hide off, 255-315 lbs))							Number 2	95 - 113 lbs		127.00	137.00
								90 lbs		107.00	112.00
* Special fed : milk fed, nature								83 lbs		90.00	90.00
							Number 3	93 - 106 lbs		90.00	96.00
								83 - 84 lbs		60.00	60.00
								73 lbs		27.00	27.00