



## Veal Supply at a Glance - Canada

For week ending November 9, 2013

Quebec Live Auction											
	2013				2012				Volume (YTD)		
	Number (head)	Price ( \$ / 100 lbs)			Number (head)	Price ( \$ / 100 lbs)			head		
Dairy Calves		Average	Min	Max		Average	Min	Max	2013	2012	% chg
Male											
Good 90 -120 lbs	867	111.00	80.00	142.00	983	114.00	100.00	125.00	37 074	38 265	-3.1 %
Good 121 - 140 lbs	166	116.00	90.00	135.00	155	113.00	105.00	125.00	8 709	7 827	11.3 %
Average 90 - 140 lbs	486	77.00	40.00	105.00	432	86.00	55.00	105.00	18 866	16 578	13.8 %
Misc. - All weights	636	26.00	12.00	50.00	362	33.00	10.00	65.00	18 533	14 410	28.6 %
Female											
Good 90 -120 lbs	72	103.00	70.00	128.00	87	116.00	90.00	155.00	3 771	3 342	12.8 %
A2 Grain fed veal calves (hide off)	1203	248.50	n/a	n/a	1329	209.40	n/a	n/a	60 675	65 452	-7.3 %
596 lbs live - (325-353 lbs hide off)											

Source: Fédération des producteurs de bovins du Québec

Ontario Live Auction											
	2013				2012				Volume (YTD)		
	Number (head)	Price ( \$ / 100 lbs)			Number (head)	Price ( \$ / 100 lbs)			head		
		Average	Min	Max		Average	Min	Max	2013	2012	% chg
+ 600 lbs	417	127.75	1 122.32	140.06	460	108.05	98.87	119.14	24 290	24 726	-1.8 %
451 - 600 lbs	59	102.49	71.27	120.92	38	91.96	78.47	103.84	1 968	2 242	-12.2 %
301 - 450 lbs	30	95.43	69.52	130.43	43	92.79	72.37	122.08	1 463	1 490	-1.8 %
126 - 300 lbs	93	90.22	61.98	120.96	116	92.63	73.46	113.17	6 047	6 059	-0.2 %
- 125 lbs	831	86.53	55.81	109.98	937	90.08	61.10	110.58	38 319	37 729	1.6 %

Source: Ontario Cattlemen's Association

Federally Inspected Slaughter									
	Weekly			Year to date			Carcass Weight (lbs - January - Oct.)		
	2013	2012	% chg	2013	2012	% chg	2013	2012	% chg
Ontario	508	537	-5.4 %	25 579	27 464	-6.9 %	366	365	0.2 %
Quebec / Atlantic	3 732	3 658	2.0 %	156 754	167 554	-6.4 %	303	302	0.1 %
<b>Canada</b>	<b>4 240</b>	<b>4 195</b>	<b>1.1 %</b>	<b>182 333</b>	<b>195 018</b>	<b>-6.5 %</b>	<b>312</b>	<b>312</b>	<b>0.1 %</b>

Source : Canadian Beef Grading Agency

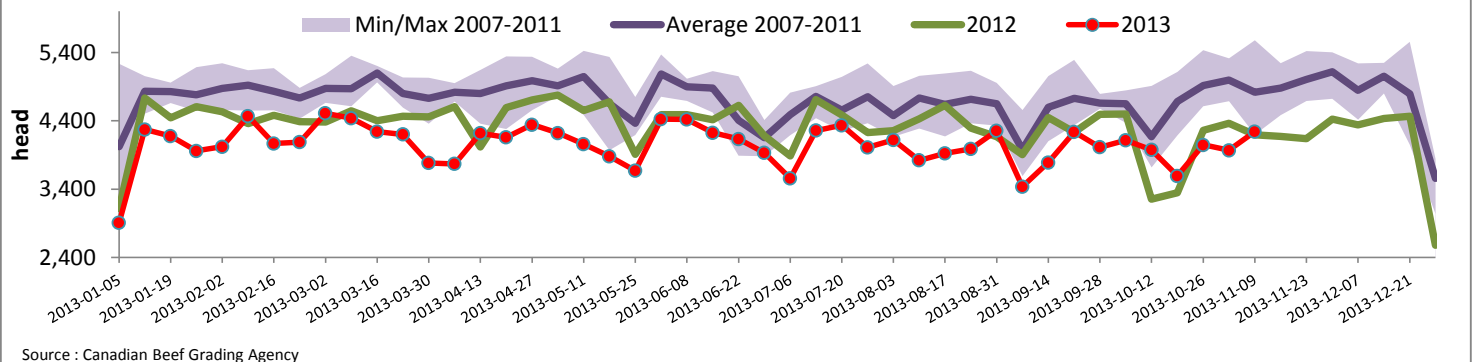
Source: CFIA

Exports				Imports			
Total veal (tonnes)	Jan. 1 - Sept. 30, 2013			Total veal (tonnes)	Jan. 1 - Nov. 9, 2013		
	2013	2012	% chg		2013	2012	% chg
United States	1 304	2 016	-35.3 %	United States	830	1 144	-27.5 %
United Arab Emirates	83	71	16.4 %	Australia	679	853	-20.4 %
Russia	15	41	-63.2 %	New Zealand	805	820	-1.8 %
Others	33	48	-31.1 %	Mexico	15	0	
<b>Total</b>	<b>1 435</b>	<b>2 176</b>	<b>-34.1 %</b>	<b>Total</b>	<b>2 330</b>	<b>2 818</b>	<b>-17.3 %</b>
Live calves (head)	Jan. 1 - Sept. 30			For the period Jan. 1 - Aug. 31			
	281	1801		Live calves (head)	2013	2 012	
					28 213	30 072	

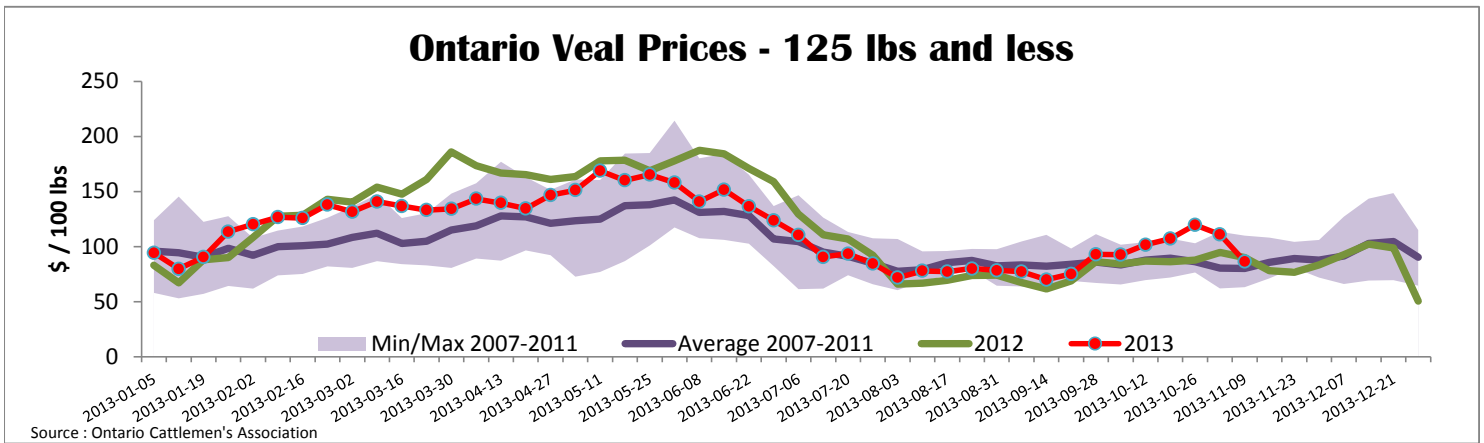
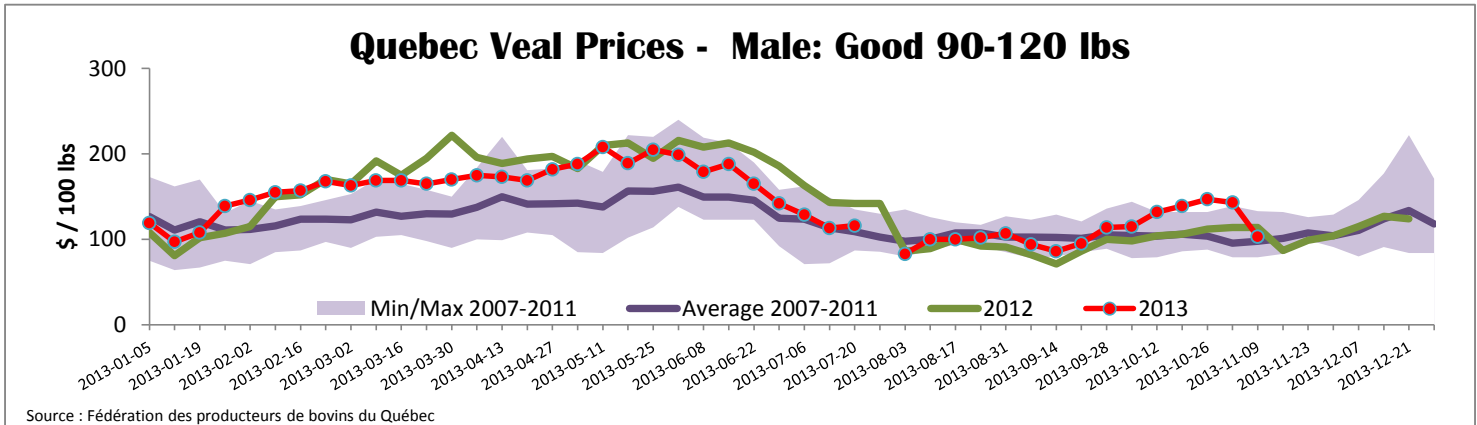
Source: Statistics Canada

Source: CFIA

## Federally Inspected Veal Slaughter - Canada



Source : Canadian Beef Grading Agency



<b>United States</b>											
Week ending November 9, 2013											
Federally Inspected Slaughter							Northeast and North Central U.S. Wholesale Price				
	Weekly			Year to date			\$/100 lbs	Simple avg	Min	Max	
	2013	2012	% chg	2013	2012	% chg					
Milk-fed or nature *							307 Rack, Ribeye, Boneless	2 350.00	2 350.00	2 350.00	
North East	3 393	2 778	22.1 %	147 538	140 047	5.3 %	332 Loin, Trimmed 4x4	602.50	575.00	630.00	
North Central	3 222	1 787	80.3 %	112 436	130 664	-14.0 %	1336 Leg slice, Retail	942.50	760.00	1 125.00	
<b>Total</b>	<b>6 615</b>	<b>4 565</b>	<b>44.9 %</b>	<b>259 974</b>	<b>270 711</b>	<b>-4.0 %</b>	1312 Osso Buco, Fore Shank	877.00	659.00	1 095.00	
Other calves	8 385	10 937	-23.3 %	384 983	374 116	2.9 %	Shoulder Clod, Chuck	570.00	495.00	645.00	
<b>Total</b>	<b>15 000</b>	<b>15 502</b>	<b>-3.2 %</b>	<b>644 957</b>	<b>644 827</b>	<b>0.0 %</b>					
							Pennsylvania Vintage Calf Auction				
Production							November 5, 2013				
Calves (million lbs)	2.1	2.2	-4.5 %	92.6	98.6	-6.1 %	Graded Holstein Bull Calves				
Live weight (lbs)	244	245	-0.4 %				\$/ 100 lbs		Min	Max	
Dressed weight (lbs)	143	144	-0.7 %				Number 1	111 - 121 lbs	157.00	171.00	
								103 lbs	179.00	179.00	
								95 lbs	197.00	197.00	
								90 lbs	140.00	140.00	
							Number 2	111 - 113 lbs	187.00	193.00	
								95 - 103 lbs	216.00	234.00	
								84 - 90 lbs	147.00	165.00	
							Number 3	93 - 111 lbs	137.00	145.00	
								83 - 84 lbs	129.00	130.00	
								74 lbs	40.00	40.00	
<b>Northeast and North Central</b>							\$/ 100 lbs	Average	Min	Max	
(Veal Carcass, Special fed * (Hide off, 255-315 lbs))							368.43	360.00	375.00		
* Special fed : milk fed, nature											

Source : USDA