



## Veal Supply at a Glance - Canada

For week ending November 16, 2013

Quebec Live Auction											
Dairy Calves	2013				2012				Volume (YTD)		
	Number (head)	Price ( \$ / 100 lbs)			Number (head)	Price ( \$ / 100 lbs)			head		
Male		Average	Min	Max		Average	Min	Max	2013	2012	% chg
Good 90 -120 lbs	929	139.00	118.00	160.00	763	96.00	87.00	112.00	38 003	39 028	-2.6 %
Good 121 - 140 lbs	191	140.00	122.00	156.00	198	103.00	90.00	116.00	8 900	8 025	10.9 %
Average 90 - 140 lbs	470	106.00	70.00	130.00	500	77.00	50.00	92.00	19 336	17 078	13.2 %
Misc. - All weights	440	35.00	15.00	80.00	500	29.00	9.00	50.00	18 973	14 910	27.3 %
Female											
Good 90 -120 lbs	99	124.00	100.00	150.00	40	87.00	65.00	102.00	3 870	3 382	14.4 %
A2 Grain fed veal calves (hide off)	1163	248.00	n/a	n/a	1488	208.20	n/a	n/a	61 838	66 940	-7.6 %
596 lbs live - (325-353 lbs hide off)											

Source: Fédération des producteurs de bovins du Québec

Ontario Live Auction											
	2013				2012				Volume (YTD)		
	Number (head)	Price ( \$ / 100 lbs)			Number (head)	Price ( \$ / 100 lbs)			head		
+ 600 lbs	517	129.85	112.90	142.57	514	104.44	95.94	113.01	24 807	25 240	-1.7 %
451 - 600 lbs	68	105.70	85.46	117.79	42	91.74	70.45	105.40	2 036	2 284	-10.9 %
301 - 450 lbs	37	131.06	90.00	172.72	22	103.27	94.50	110.73	1 500	1 512	-0.8 %
126 - 300 lbs	113	100.93	72.29	130.70	133	88.01	61.02	111.49	6 160	6 192	-0.5 %
- 125 lbs	908	107.68	67.66	135.11	806	78.21	56.57	99.07	39 227	38 535	1.8 %

Source: Ontario Cattlemen's Association

Federally Inspected Slaughter									
	Weekly			Year to date			Carcass Weight (lbs - January - Oct.)		
	2013	2012	% chg	2013	2012	% chg	2013	2012	% chg
Ontario	469	641	-26.8 %	26 048	28 105	-7.3 %	366	365	0.2 %
Quebec / Atlantic	3 665	3 532	3.8 %	160 419	171 086	-6.2 %	303	302	0.1 %
<b>Canada</b>	<b>4 134</b>	<b>4 173</b>	<b>-0.9 %</b>	<b>186 467</b>	<b>199 191</b>	<b>-6.4 %</b>	<b>312</b>	<b>312</b>	<b>0.1 %</b>

Source : Canadian Beef Grading Agency

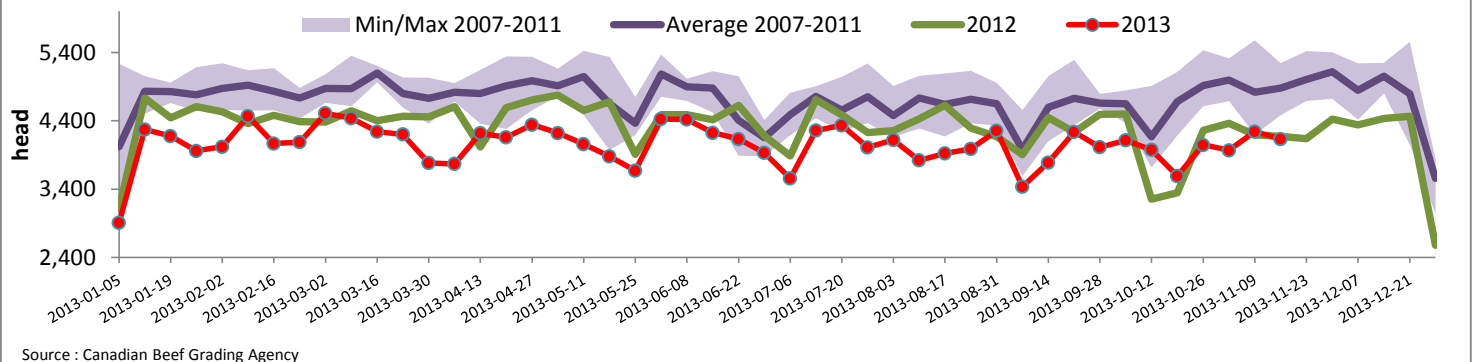
Source: CFIA

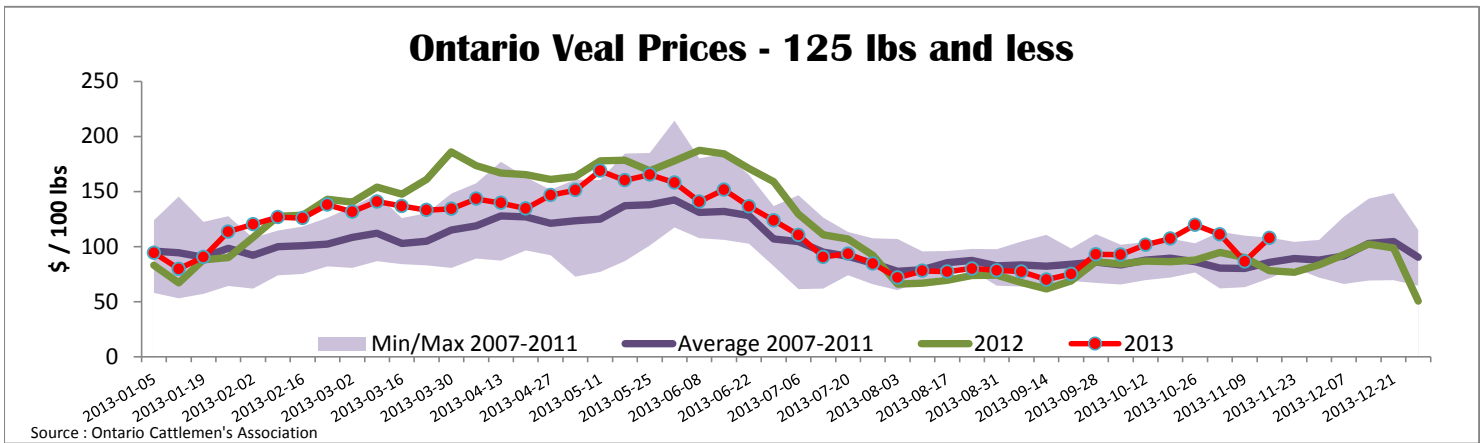
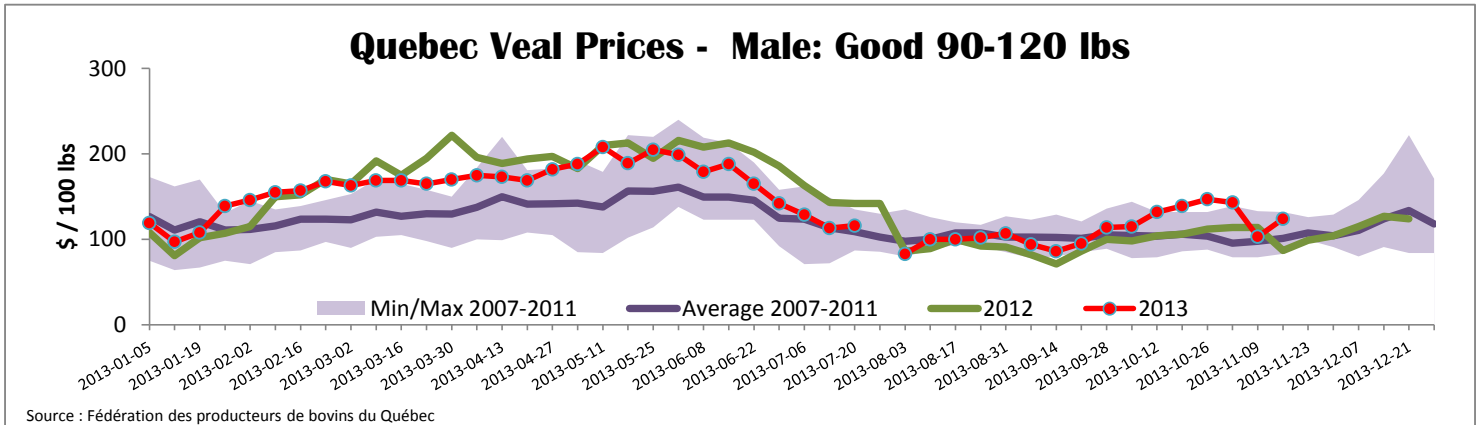
Exports				Imports			
Total veal (tonnes)	Jan. 1 - Sept. 30, 2013			Total veal (tonnes)	Jan. 1 - Nov. 16, 2013		
	2013	2012	% chg		2013	2012	% chg
United States	1 304	2 016	-35.3 %	United States	839	1 166	-28.1 %
United Arab Emirates	83	71	16.4 %	Australia	695	853	-18.6 %
Russia	15	41	-63.2 %	New Zealand	823	839	-1.9 %
Others	33	48	-31.1 %	Mexico	15	0	
<b>Total</b>	<b>1 435</b>	<b>2 176</b>	<b>-34.1 %</b>	<b>Total</b>	<b>2 371</b>	<b>2 858</b>	<b>-17.0 %</b>
Live calves (head)	Jan. 1 - Sept. 30			For the period Jan. 1 - Sept. 30			
	281	1801		Live calves (head)	2013	2012	
					30 493	31 634	

Source: Statistics Canada

Source: CFIA

## Federally Inspected Veal Slaughter - Canada





<b>United States</b>										
Week ending November 16, 2013										
Federally Inspected Slaughter							Northeast and North Central U.S. Wholesale Price			
	Weekly			Year to date			\$/100 lbs	Simple avg	Min	Max
	2013	2012	% chg	2013	2012	% chg				
Milk-fed or nature *							307 Rack, Ribeye, Boneless	2 550.00	2 350.00	2 750.00
North East	3 386	3 719	-9.0 %	150 924	143 766	5.0 %	332 Loin, Trimmed 4x4	602.50	575.00	630.00
North Central	3 065	2 557	19.9 %	115 501	133 221	-13.3 %	1336 Leg slice, Retail	942.50	760.00	1 125.00
<b>Total</b>	<b>6 451</b>	<b>6 276</b>	<b>2.8 %</b>	<b>266 425</b>	<b>276 987</b>	<b>-3.8 %</b>	1312 Osso Buco, Fore Shank	877.00	659.00	1 095.00
Other calves	8 549	9 764	-12.4 %	392 756	383 880	2.3 %	Shoulder Clod, Chuck	570.00	495.00	645.00
<b>Total</b>	<b>15 000</b>	<b>16 040</b>	<b>-6.5 %</b>	<b>659 181</b>	<b>660 867</b>	<b>-0.3 %</b>				
							Source : USDA			
Production							<b>Pennsylvania Vintage Calf Auction</b>			
Calves (million lbs)	2.2	2.3	-4.3 %	94.9	100.9	-5.9 %	Graded Holstein Bull Calves		November 12, 2013	
Live weight (lbs)	248	247	0.4 %				\$/ 100 lbs		Min	Max
Dressed weight (lbs)	146	145	0.7 %							
							Source : USDA			
<b>Northeast and North Central</b>							\$/ 100 lbs	Average	Min	Max
(Veal Carcass, Special fed * (Hide off, 255-315 lbs))							367.02	360.00	375.00	
* Special fed : milk fed, nature										
							Number 1	113 - 121 lbs	160.00	180.00
								95 - 103 lbs	205.00	217.00
								90 lbs	165.00	165.00
							Number 2	111 - 113 lbs	172.00	185.00
								95 - 103 lbs	190.00	234.00
								84 - 90 lbs	160.00	165.00
							Number 3	83 - 108 lbs	142.00	157.00
								73 lbs	50.00	50.00