



## Veal Supply at a Glance - Canada

For week ending December 7, 2013

Quebec Live Auction											
Dairy Calves	2013				2012				Volume (YTD)		
	Number (head)	Price ( \$ / 100 lbs)			Number (head)	Price ( \$ / 100 lbs)			head		
Male		Average	Min	Max		Average	Min	Max	2013	2012	% chg
Good 90 -120 lbs	829	162.00	130.00	185.00	926	115.00	100.00	130.00	40 655	41 741	-2.6 %
Good 121 - 140 lbs	171	160.00	135.00	180.00	184	117.00	102.00	130.00	9 384	8 579	9.4 %
Average 90 - 140 lbs	583	113.00	50.00	160.00	377	84.00	50.00	110.00	20 833	18 212	14.4 %
Misc. - All weights	496	30.00	11.00	80.00	331	27.00	7.00	50.00	20 497	16 093	27.4 %
<b>Female</b>											
Good 90 -120 lbs	77	135.00	100.00	170.00	81	104.00	80.00	125.00	4 078	3 581	13.9 %
A2 Grain fed veal calves (hide off)	1215	267.10	n/a	n/a	1478	206.70	n/a	n/a	65 602	70 974	-7.6 %
596 lbs live - (325-353 lbs hide off)											

Source: Fédération des producteurs de bovins du Québec

Ontario Live Auction											
	2013				2012				Volume (YTD)		
	Number (head)	Price ( \$ / 100 lbs)			Number (head)	Price ( \$ / 100 lbs)			head		
		Average	Min	Max		Average	Min	Max	2013	2012	% chg
+ 600 lbs	504	143.99	126.60	160.65	457	102.73	88.38	117.15	26 180	26 707	-2.0 %
451 - 600 lbs	79	114.93	100.36	131.38	83	92.27	76.84	102.99	2 235	2 466	-9.4 %
301 - 450 lbs	61	113.57	81.43	143.12	45	101.52	82.72	117.78	1 645	1 694	-2.9 %
126 - 300 lbs	126	114.38	86.77	150.50	108	79.60	56.83	102.25	6 539	6 592	-0.8 %
- 125 lbs	1090	122.26	64.79	156.14	847	92.53	61.18	116.60	42 198	41 070	2.7 %

Source: Ontario Cattlemen's Association

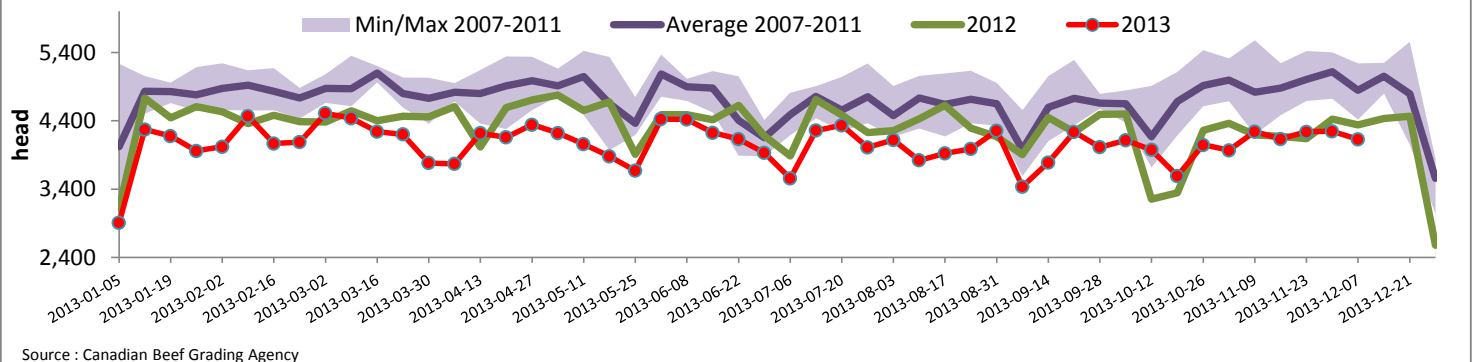
Federally Inspected Slaughter									
	Weekly			Year to date			Carcass Weight (lbs - January - Oct.)		
	2013	2012	% chg	2013	2012	% chg	2013	2012	% chg
Ontario	464	585	-20.7 %	27 471	29 874	-8.0 %	366	365	0.2 %
Quebec / Atlantic	3 663	3 754	-2.4 %	171 609	182 220	-5.8 %	303	302	0.1 %
<b>Canada</b>	<b>4 127</b>	<b>4 339</b>	<b>-4.9 %</b>	<b>199 080</b>	<b>212 094</b>	<b>-6.1 %</b>	<b>312</b>	<b>312</b>	<b>0.1 %</b>

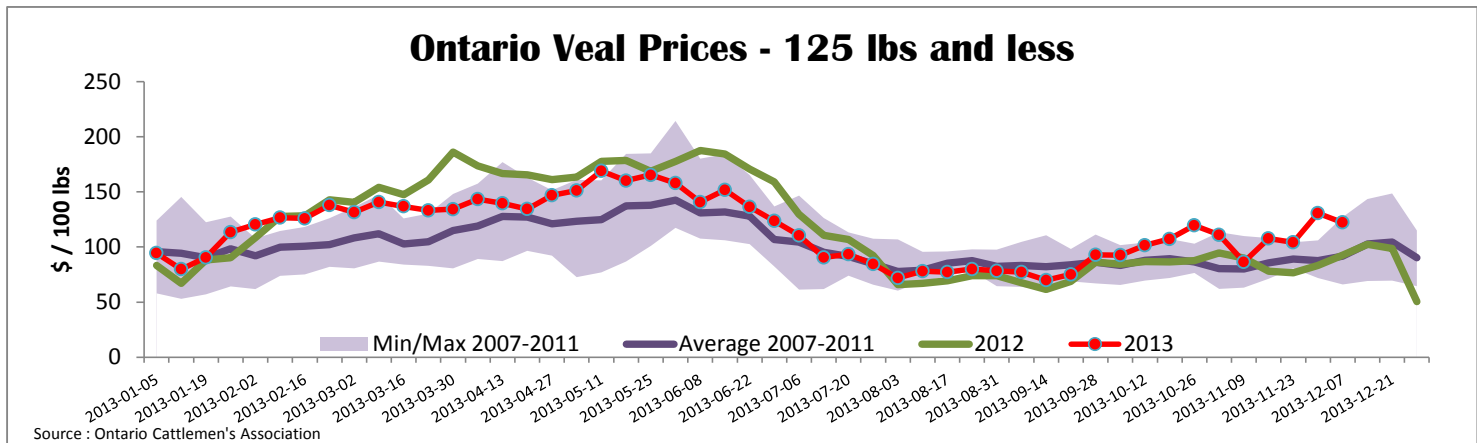
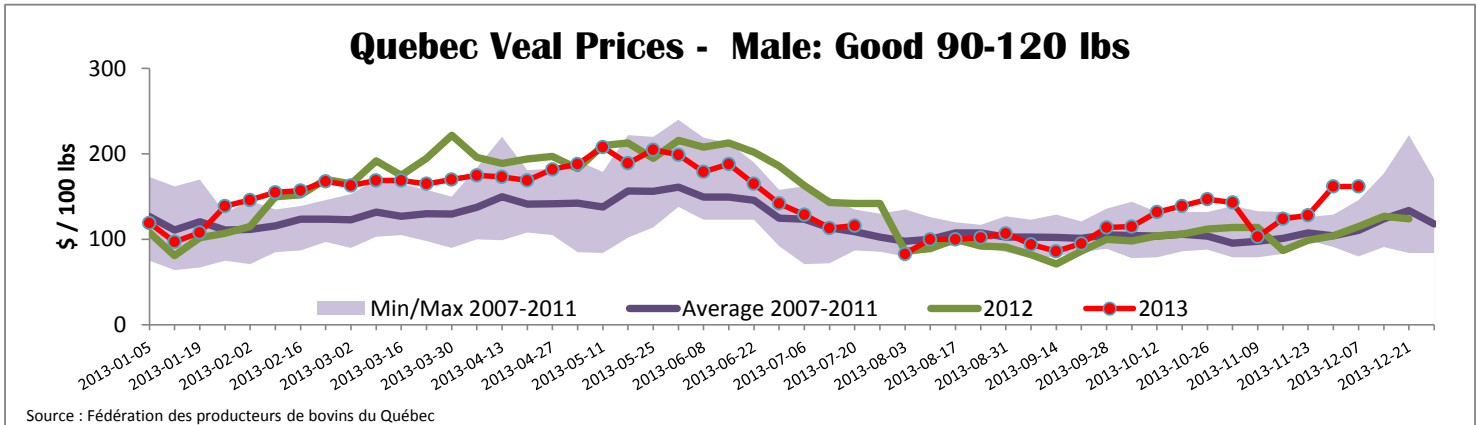
Source : Canadian Beef Grading Agency      Source: CFIA

Exports				Imports					
Total veal (tonnes)	Jan. 1 - Oct. 31, 2013	2013		2012		2013		2012	
			% chg		% chg		% chg		% chg
United States		1 380	-34.9 %	2 120		891	-26.4 %	1 211	
United Arab Emirates		96	19.1 %	81		706	-20.7 %	890	
Russia		15	-66.1 %	44		910	1.8 %	894	
Others		34	-35.7 %	53		15		0	
<b>Total</b>		<b>1 525</b>	<b>-33.6 %</b>	<b>2 298</b>		<b>2 522</b>	<b>-15.8 %</b>	<b>2 995</b>	
Live calves (head)	Jan. 1 - Oct. 31	281		1936		30 493		31 634	

Source: Statistics Canada      Source: CFIA

### Federally Inspected Veal Slaughter - Canada





<b>United States</b>																
Week ending December 7, 2013																
Federally Inspected Slaughter							Northeast and North Central U.S. Wholesale Price									
	Weekly			Year to date			\$/100 lbs	Simple avg	Min	Max						
	2013	2012	% chg	2013	2012	% chg										
Milk-fed or nature *							307 Rack, Ribeye, Boneless	2 350.00	2 350.00	2 350.00						
North East	3 572	3 691	-3.2 %	157 714	154 287	2.2 %	332 Loin, Trimmed 4x4	602.50	575.00	630.00						
North Central	3 320	2 741	21.1 %	121 248	140 920	-14.0 %	1336 Leg slice, Retail	942.50	760.00	1 125.00						
<b>Total</b>	<b>6 892</b>	<b>6 432</b>	<b>7.2 %</b>	<b>278 962</b>	<b>295 207</b>	<b>-5.5 %</b>	1312 Osso Buco, Fore Shank	897.00	699.00	1 095.00						
Other calves	8 108	9 886	-18.0 %	422 439	413 394	2.2 %	Shoulder Clod, Chuck	570.00	495.00	645.00						
<b>Total</b>	<b>15 000</b>	<b>16 318</b>	<b>-8.1 %</b>	<b>701 401</b>	<b>708 601</b>	<b>-1.0 %</b>	Source : USDA									
Production							<b>Pennsylvania Vintage Calf Auction</b>									
Calves (million lbs)	2.2	2.4	-8.3 %	101.2	107.7	-6.0 %	Graded Holstein Bull Calves		December 3, 2013							
Live weight (lbs)	260	249	4.4 %					\$/ 100 lbs	Min	Max						
Dressed weight (lbs)	152	147	3.4 %				Number 1	122 lbs	107.00	107.00						
<b>Northeast and North Central</b> (Veal Carcass, Special fed * (Hide off, 255-315 lbs)) * Special fed : milk fed, nature									\$/ 100 lbs	Average	Min	Max				
										362.29	342.00	375.00		95 - 112 lbs	112.00	129.00
														77 - 90 lbs	65.00	90.00
							Number 2	95 - 114lbs	100.00	105.00						
								84 - 90 lbs	72.00	82.00						
								73 lbs	40.00	40.00						
							Number 3	109 - 117lbs	60.00	60.00						
								83 - 95 lbs	67.00	80.00						
								72 lbs	40.00	40.00						