



Veal Supply at a Glance - Canada

For week ending December 28, 2013

Quebec Live Auction											
	2013				2012				Volume (YTD)		
	Number (head)	Price (\$ / 100 lbs)			Number (head)	Price (\$ / 100 lbs)			head		
Dairy Calves		Average	Min	Max		Average	Min	Max	2013	2012 * % chg	
Male											
Good 90 -120 lbs	437	179.00	160.00	206.00	N/A	N/A	N/A	N/A	43 003	43 758	-1.7 %
Good 121 - 140 lbs	88	168.00	150.00	195.00	N/A	N/A	N/A	N/A	9 790	8 971	9.1 %
Average 90 - 140 lbs	239	131.00	80.00	165.00	N/A	N/A	N/A	N/A	21 691	19 110	13.5 %
Misc. - All weights	197	31.00	15.00	70.00	N/A	N/A	N/A	N/A	21 448	16 823	27.5 %
Female											
Good 90 -120 lbs	49	161.00	120.00	200.00	N/A	N/A	N/A	N/A	4 249	3 740	13.6 %
A2 Grain fed veal calves (hide off)	1213	210.76	n/a	1 458.00	N/A	N/A	N/A	N/A	68 176	73 846	-7.7 %

596 lbs live - (325-353 lbs hide off) Source: Fédération des producteurs de bovins du Québec * Week Ending Dec. 22, 2013

Ontario Live Auction											
	2013				2012				Volume (YTD)		
	Number (head)	Price (\$ / 100 lbs)			Number (head)	Price (\$ / 100 lbs)			head		
		Average	Min	Max		Average	Min	Max	2013	2012	% chg
+ 600 lbs	70	132.84	127.76	139.94	169	104.39	92.51	125.01	27 343	28 139	-2.8 %
451 - 600 lbs	6	101.00	97.17	104.83	5	98.70	92.50	104.90	2 376	2 599	-8.6 %
301 - 450 lbs	6	66.83	61.00	74.67	5	77.62	77.20	78.00	1 761	1 773	-0.7 %
126 - 300 lbs	32	141.08	106.50	173.88	3	95.58	62.50	125.00	6 888	6 826	0.9 %
- 125 lbs	510	149.84	82.78	186.94	67	50.55	27.39	71.04	44 868	42 895	4.6 %

Source: Ontario Cattlemen's Association

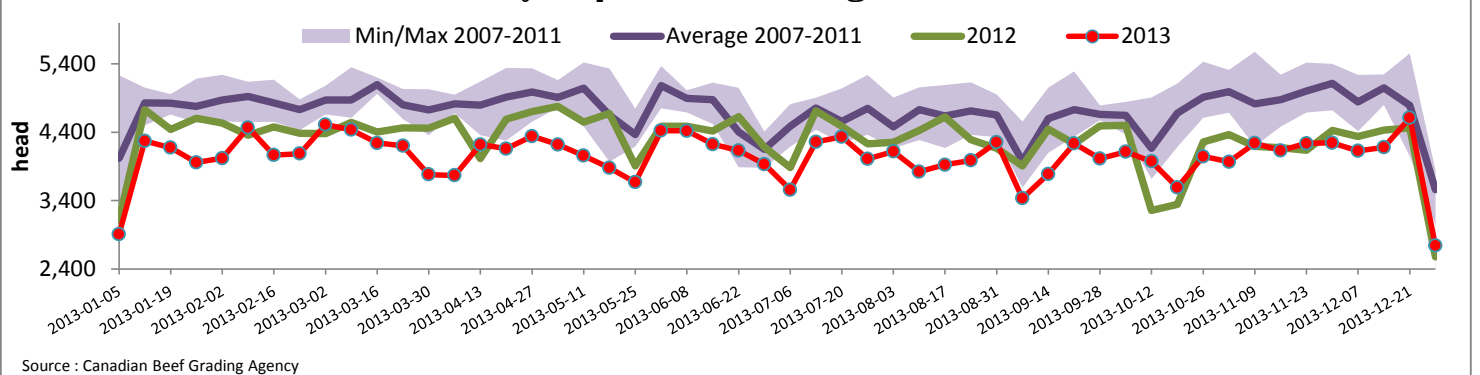
Federally Inspected Slaughter									
	Weekly			Year to date			Carcass Weight (lbs - January - Oct.)		
	2013	2012	% chg	2013	2012	% chg	2013	2012	% chg
Ontario	268	318	-15.7 %	28 674	31 351	-8.5 %	365	365	0.0 %
Quebec / Atlantic	2 475	2 261	9.5 %	181 941	192 220	-5.3 %	302	302	-0.1 %
Canada	2 743	2 579	6.4 %	210 615	223 571	-5.8 %	311	312	-0.2 %

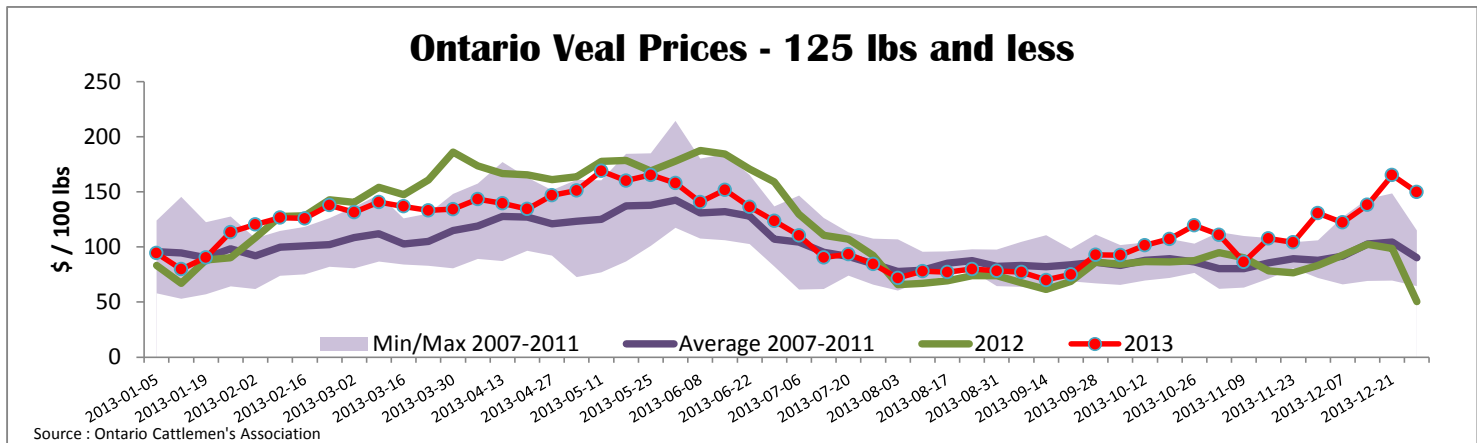
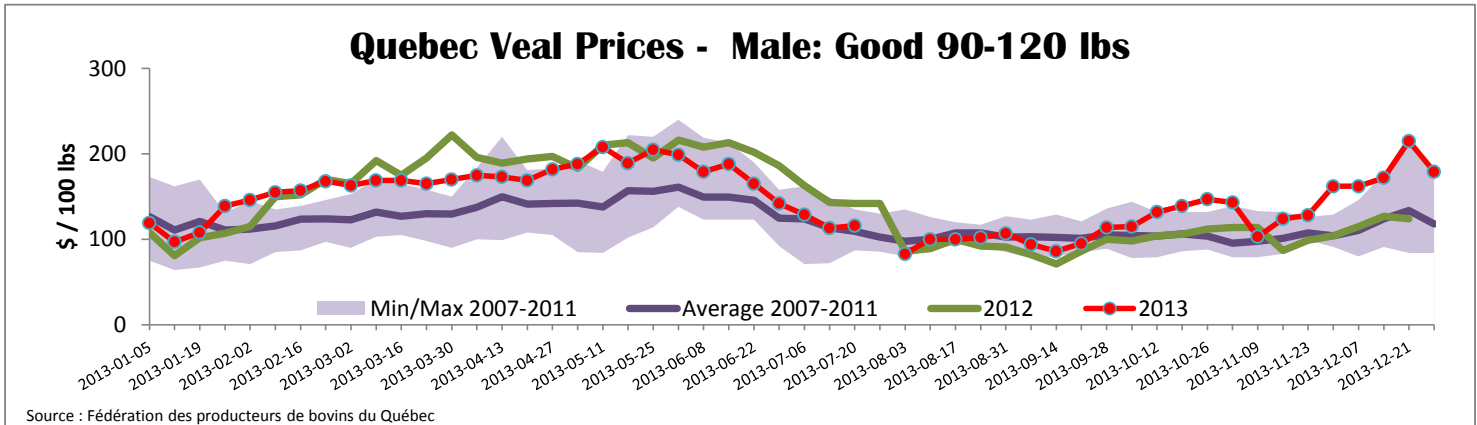
Source : Canadian Beef Grading Agency Source: CFIA

Exports				Imports					
Total veal (tonnes)	Jan. 1 - Nov. 30, 2013	2013	2012	% chg	Total veal (tonnes)	Jan. 1 - Dec. 28, 2013	2013	2012	% chg
United States		1 475	2 264	-34.8 %	United States		922	1 243	-25.8 %
United Arab Emirates		109	97	11.8 %	Australia		756	920	-17.9 %
Russia		15	66	-77.3 %	New Zealand		915	911	0.4 %
Others		34	79	-57.0 %	Mexico		15	0	
Total		1 633	2 506	-34.8 %	Total		2 608	3 075	-15.2 %
Live calves (head)	Jan. 1 - Nov. 30	44	1953		For the period Jan. 1 - Oct. 31		2013	2 012	
					Live calves (head)		32 706	35 674	

Source: Statistics Canada Source: CFIA

Federally Inspected Veal Slaughter - Canada





United States										
Week ending December 28, 2013										
Federally Inspected Slaughter					Northeast and North Central U.S. Wholesale Price					
	Weekly			Year to date			\$/100 lbs			
	2013	2012	% chg	2013	2012	% chg	Simple avg	Min	Max	
Milk-fed or nature *							307 Rack, Ribeye, Boneless	2 350.00	2 350.00	2 350.00
North East	2 931	2 563	14.4 %	165 213	162 386	1.7 %	332 Loin, Trimmed 4x4	612.50	575.00	650.00
North Central	2 676	2 089	28.1 %	127 770	149 300	-14.4 %	1336 Leg slice, Retail	942.50	760.00	1 125.00
Total	5 607	4 652	20.5 %	292 983	311 686	-6.0 %	1312 Osso Buco, Fore Shank	917.00	699.00	1 135.00
Other calves	7 015	7 514	-6.6 %	452 283	442 198	2.3 %	Shoulder Clod, Chuck	570.00	495.00	645.00
Total	12 622	12 166	3.7 %	745 266	753 884	-1.1 %				
							Source : USDA			
Production							Pennsylvania Vintage Calf Auction			
Calves (million lbs)	1.6	1.7	-5.9 %	107.3	114.3	-6.1 %	Graded Holstein Bull Calves			
Live weight (lbs)	248	246	0.8 %				December 23, 2013			
Dressed weight (lbs)	146	144	1.4 %				\$/ 100 lbs Min Max			
							Number 1	95 - 130 lbs	160.00	190.00
								80 - 90 lbs	140.00	160.00
							Number 2	95 - 125 lbs	130.00	160.00
								80 - 90 lbs	125.00	140.00
							Number 3	80 - 130 lbs	50.00	100.00
Northeast and North Central										
(Veal Carcass, Special fed * (Hide off, 255-315 lbs))							\$/ 100 lbs	Average	Min	Max
* Special fed : milk fed, nature								364.44	358.00	375.00